

A Digital Twin For Grenada



Get Answers: Questions will be answered at the end.
You can submit them at anytime through the Q&A module.



On-Demand: The recording will be posted shortly after the webinar.
You'll receive an email with the link to view or download.



Start time: The webinar will start at 8:00 am Pacific



Contact us: For anything else, please email us:
KArroyo@esri.com



2021 United Nations Decade
of Ocean Science
2030 for Sustainable Development

<https://ditto-oceandecade.org/>



A Digital Twin For Grenada
A Satellite event for DITTO



2021 United Nations Decade
2030 of Ocean Science
for Sustainable Development

<https://ditto-oceandecade.org/>

Today's Presenters



Kishi Logie

Systems Administrator
Grenada Central Statistics Office



Kate Hess

Solution Engineer
Esri National Government Team



Linda Peters

Global Business Development
Manager
Esri National Government Team

Agenda

- **What is a Digital Twin**
- **A Digital Twin for Grenada**
- **Demonstrations**
- **Resources**
- **Open Discussion**



An aerial photograph of a city, showing buildings, streets, and green spaces, overlaid with a semi-transparent blue filter. The text is centered on the image.

***Digital Twins** are virtual representations of the real world . . .
. . . including physical objects, processes, relationships and behaviors.*

***GIS** creates digital twins of the natural and built environment . . .
. . . and uniquely integrates many types of digital models.*

ArcGIS

A Comprehensive Geospatial Platform

Services Based

Open



Geospatial Infrastructure

Extendable

Distributed

SaaS & Software

Supporting Individuals, Teams and Organizations



Our World is Transforming

Digital Twins are Abstracting and Modeling Everything

Landscapes (LIM)

Environment

Topographic

Buildings (BIM)

Facilities / Indoors

Plants / Structures

Networks (NIM)

Utilities / Telecom

Pipelines

Roads and Highways

Oceans (EMUs)

Ecological Marine Units

Cities (CIM)

Smart City

Planning

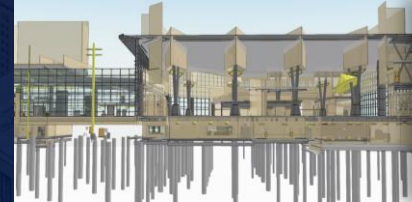


*GIS is the framework for . . .
. . . Creating & Integrating Digital Twins*

Business Drivers for Digital Twins



High costs of recurring updates

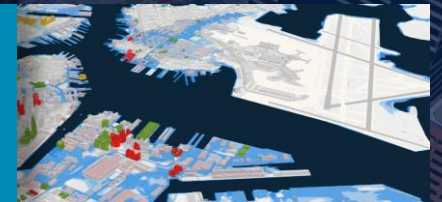


Increase efficiency (remove silos)

Accountability and transparency towards goals



Demonstratable sustainability



Insufficient access to current GIS data



Maximize investments (people, data, & technology)

Desire for more diverse community representation



Simplify communications





Grenada

Creating a Digital Twin

A project in collaboration with
the Grenada Central Statistics Office,
The Ministry of Agriculture and Lands and Esri

Area of Interest

- Land mass of the islands of Grenada, Carriacou and Petite Martinique as well as the smaller islands Ronde Island, Caille Island, Diamond Island, Large Island, Saline Island, and Frigate Island
- This results in a total area of 348.5 km² to be covered. (134.6 sq. mi.)





Goals behind the project for Grenada

- **Create information that can be used in decision making in key areas**
 - **Sustainability**
 - **Economic Development**
 - **Public Safety**
 - **Disaster Planning, Preparedness and Management**
 - **Census planning**
 - **Physical planning**
 - **Blue Economy**
 - **And more!**

An aerial photograph of a city with a winding river, overlaid with a semi-transparent blue gradient. The text is centered on the left side of the image.

Demonstration

A Video Tour

Data Processed

- **Topographic Lidar (digital 3D/elevation data)**
- **Min. 8 points per square meter, 5 cm vertical accuracy (RMSE), 15 cm horizontal accuracy (RMSE)**
- **Aerial color (RGB) photography**
- **Aerial near infrared (NIR) photography**
- **Orthophotos: 20 cm resolution (ground sampling distance), 3 pixel absolute horizontal accuracy**

Data Processed

- Classified point cloud (ground, buildings, land vegetation, temporary objects, outliers, others)
- Interpolated topographic digital surface model (DSM) as 0.5 m grid
- Interpolated topographic digital terrain model (DTM) as 0.5 m grid
- RGB orthophoto mosaic with 0.2 m resolution
- NIR orthophoto mosaic with 0.2 m resolution
- DSM and DTM adjusted and combined with the UKHO bathymetry data

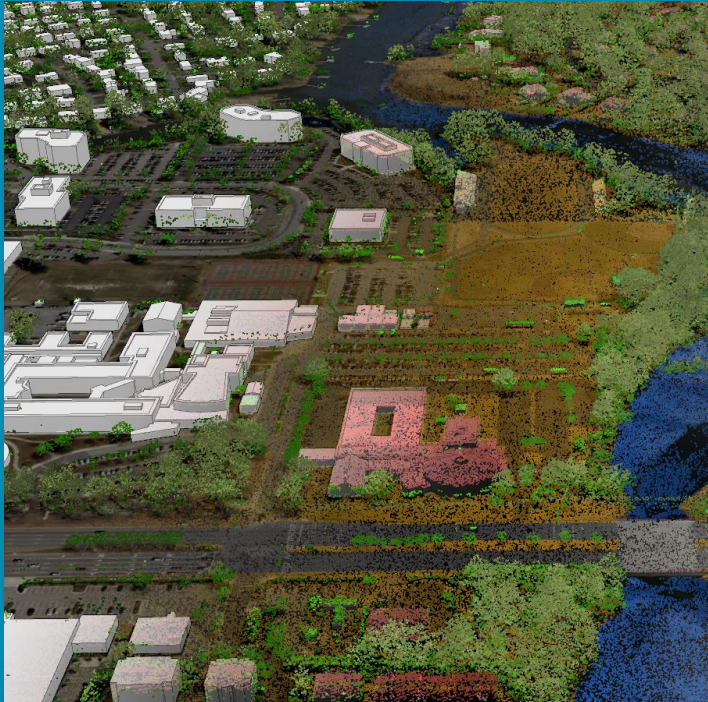
Poll Question

Please Tick the Boxes that Apply to Your Organization

Step #1

Obtaining Data

Foundational imagery and LiDAR content



Step #2

Processing Data

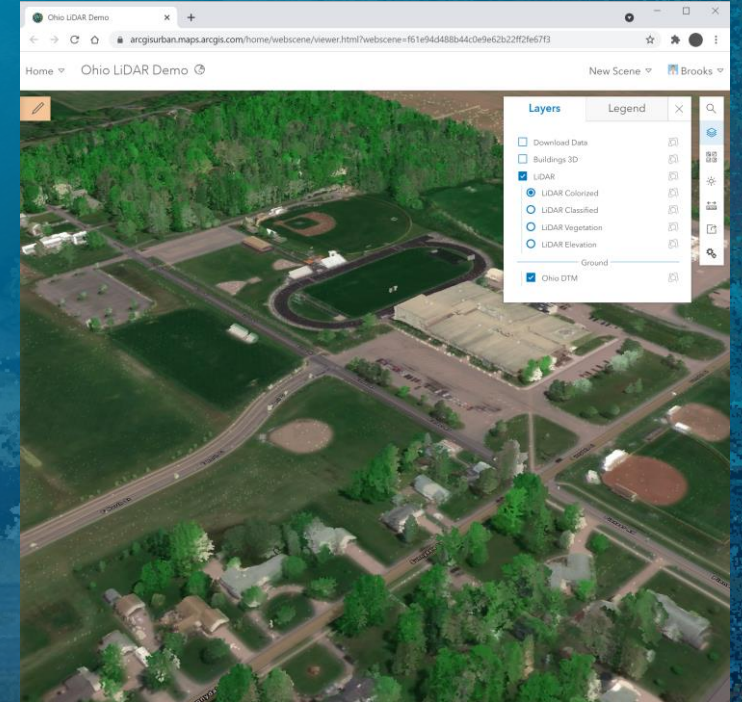
Automation and data production



Step #3

Dissemination

Publishing and stakeholder engagement



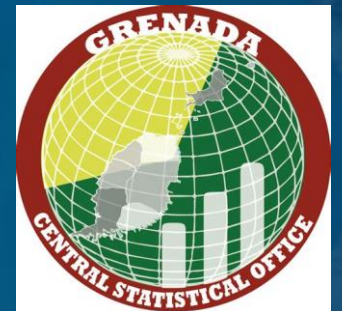
Benefits of a Digital Twin

Enabling Us to Do More with Less

- Responsiveness - Speeding Timely Information to Decision Makers
- Expanding use of Technology, Data Analysis & Information Delivery
- Saving Time, Money, Labor and Environmental Impact
- Increasing Efficiency and Expanding Capacity
- Improving Accuracy and Engagement with User Community

Value to Grenada

- **Identifying future projects working with other govt agencies**
 - **Sea Level rise – protection of critical infrastructure**
 - **Ocean governance**
 - **Police and Planning interested in transportation planning and safety improvements**
 - **Postal addressing project**
 - **Public Safety – emergency response services**
 - **Oil spill modelling**
 - **Sustainable blue economy**
 - **And more...**



Resources

- **Digital Twins at Esri** <https://www.esri.com/en-us/digital-twin/overview>
- ArcNews [A Foundation for Digital Twins](#)
- [Raster Analytics and Deep Learning in ArcGIS Blog](#)
- Video [ArcGIS Image for ArcGIS Online](#)
- Learn lessons <https://learn-arcgis-learngis.hub.arcgis.com/>
- [Deep Learning models in Living Atlas](#)
- [Lidar Magazine article on Digital Twin for Grenada](#)



A Digital Twin for Grenada

Question & Answer

Please Enter Questions in the Questions Window





esri

THE
SCIENCE
OF
WHERE