



Launch your Organization with Web GIS

Julia Guard

**GIS
INSPIRING
WHAT'S
NEXT**

Session Agenda

- **Resource Assessment**
 - **Ownership**
 - **Start Simple**
 - **Example**

Resource Assessment

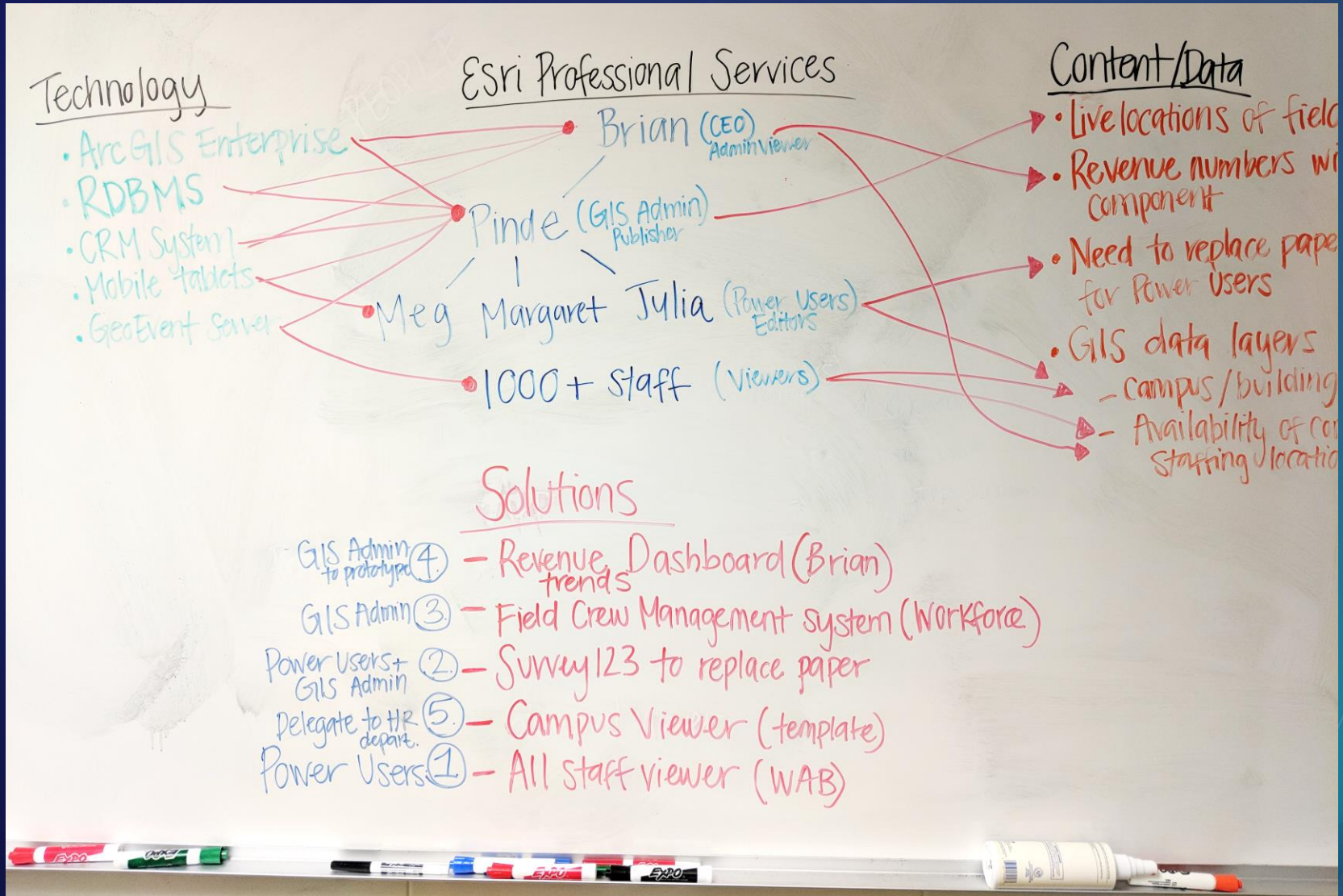
The image features a dark teal background with a gradient. In the center, the text "Resource Assessment" is written in a bold, white, sans-serif font. The background is decorated with abstract geometric elements: a cluster of thin, overlapping lines in shades of teal and red in the top-left corner; a faint, light-colored grid pattern in the bottom-right corner; and several thick, diagonal bars in orange, yellow, and light green in the bottom-right corner. The overall aesthetic is modern and professional.

Resource Assessment

- Analyze Needs
- Identify:
 - Technology
 - Content
 - People
- Determine Priorities



Resource Assessment



People

- **Who:**

- An Advocate (CEO: Brian)
- Manager/Technology Lead (GIS Admin: Pinde)
- Technical Staff (Power Users)
- Audience (Viewers)



Content

- **What:**
 - Datasets are available
 - Information is interesting, useful, cost saving, etc.
 - Is possible for our organization

Content/Data

- Live locations of field crew
- Revenue numbers with spatial component
- Need to replace paper surveys for Power Users
- GIS data layers
 - Campus / buildings
 - Availability of consultants
Staffing / locations

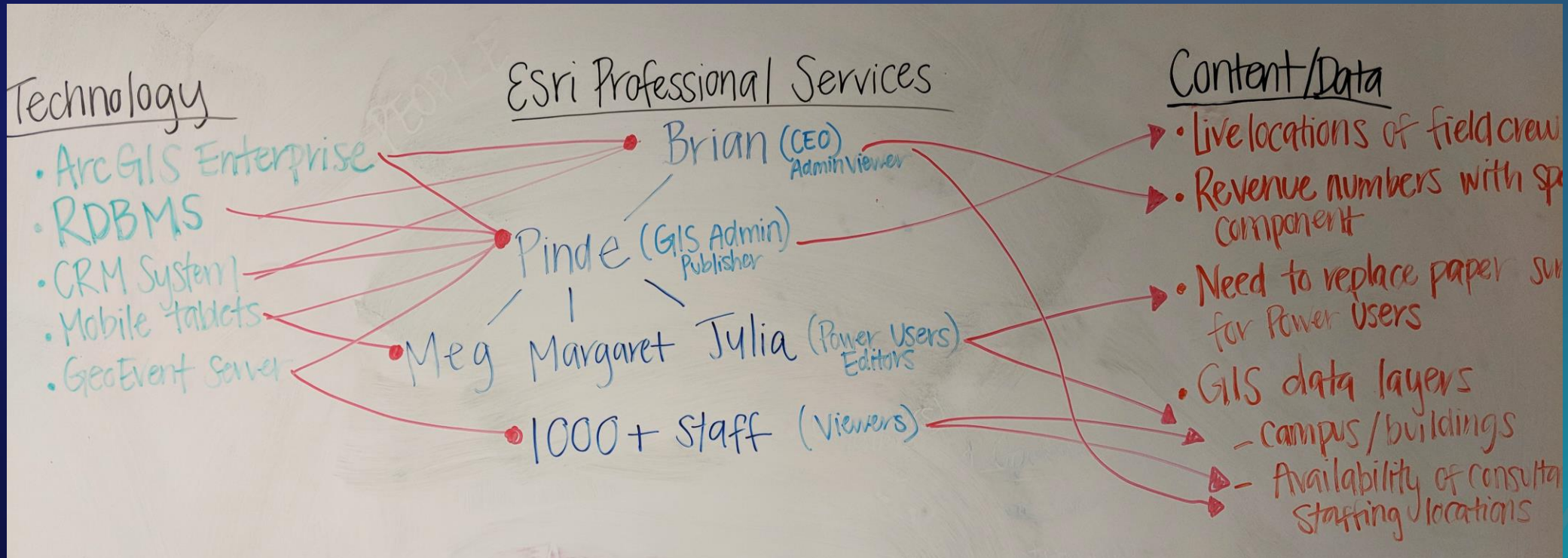
Technology

- **How:**
 - Which piece(s) of technology are available and appropriate
 - Do we have everything we need?

Technology

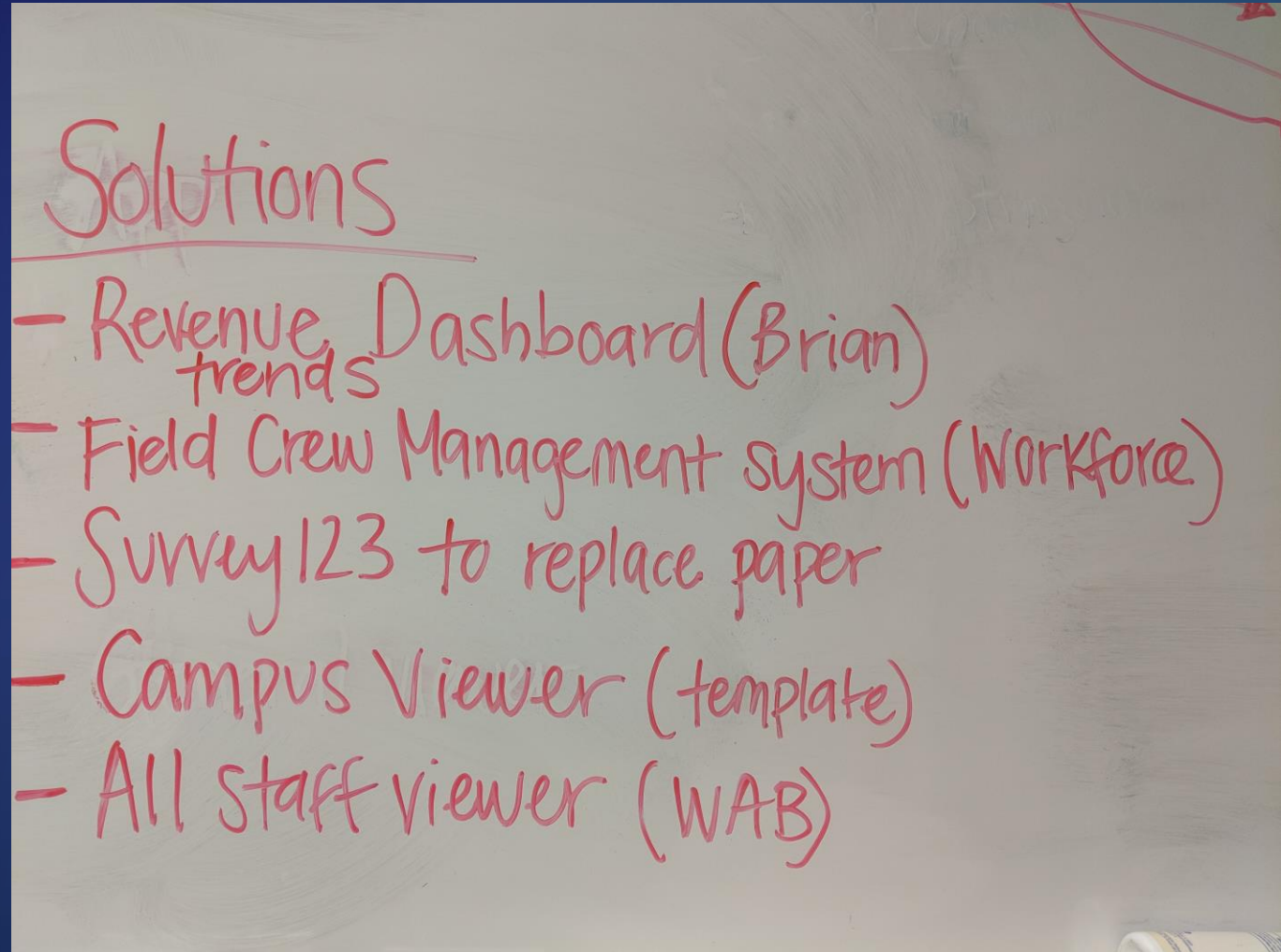
- ArcGIS Enterprise
- RDBMS
- CRM System
- Mobile Tablets
- GeoEvent Server

Make connections



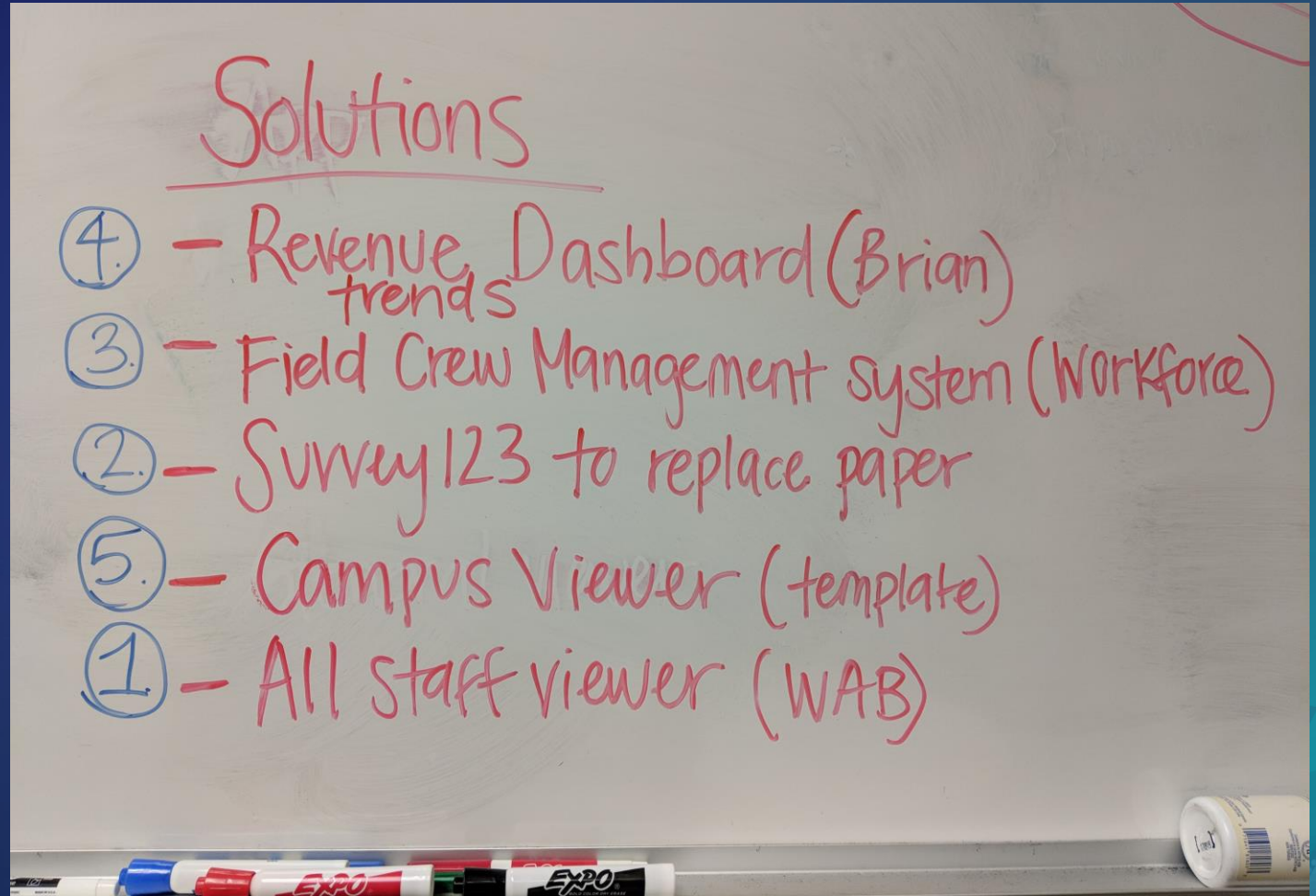
To draw conclusions

- Results:
 - A plan of future activities in the form of solutions to problems solved through GIS



To draw conclusions

- Results:
 - A plan of future activities in the form of solutions to problems that GIS can solve
 - **Prioritized by importance or ease of completion**



To draw conclusions

- Results:

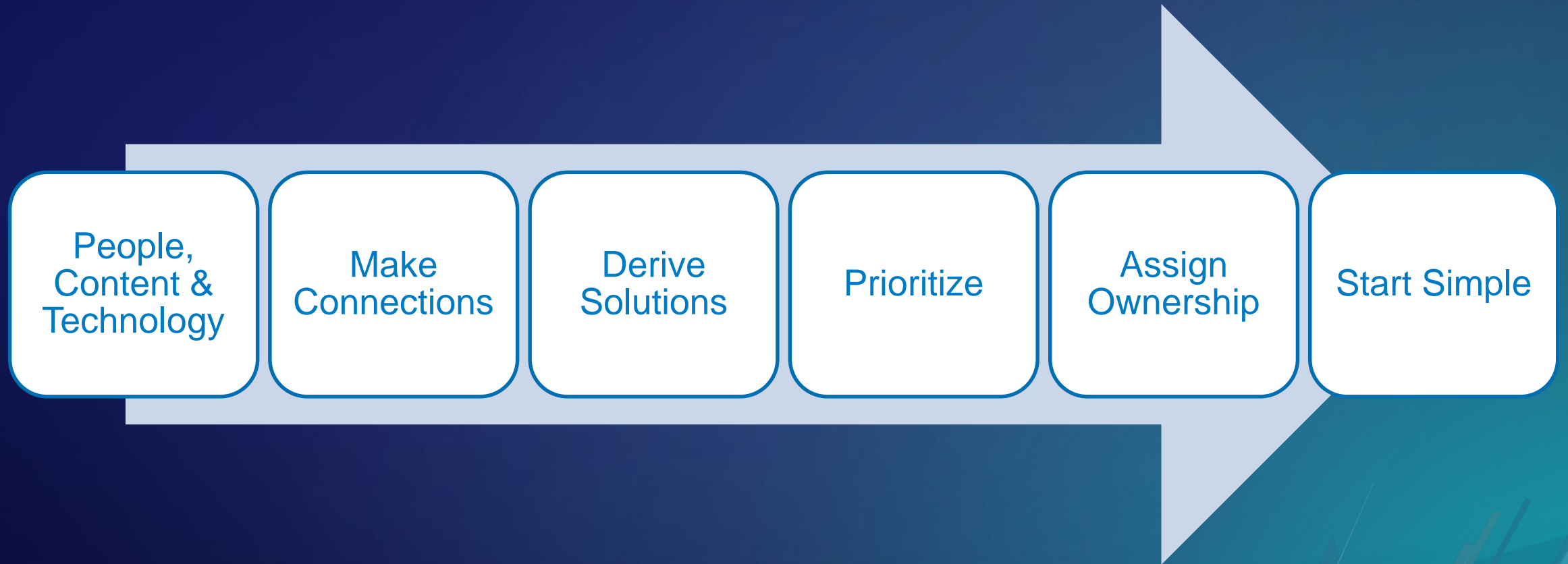
- A plan of future activities in the form of solutions to problems that GIS can solve
- Prioritized by importance/ease of completion
- **With ownership assigned**

Solutions

- GIS Admin to prototype (4) - Revenue Dashboard (Brian) trends
- GIS Admin (3) - Field Crew Management system
- Power Users + GIS Admin (2) - Survey 123 to replace paper
- Delegate to HR depart. (5) - Campus Viewer (template)
- Power Users (1) - All staff viewer (WAB)

EXPO EXPO

Resource Assessment Workflow





**Putting it all
together**

Putting it all together

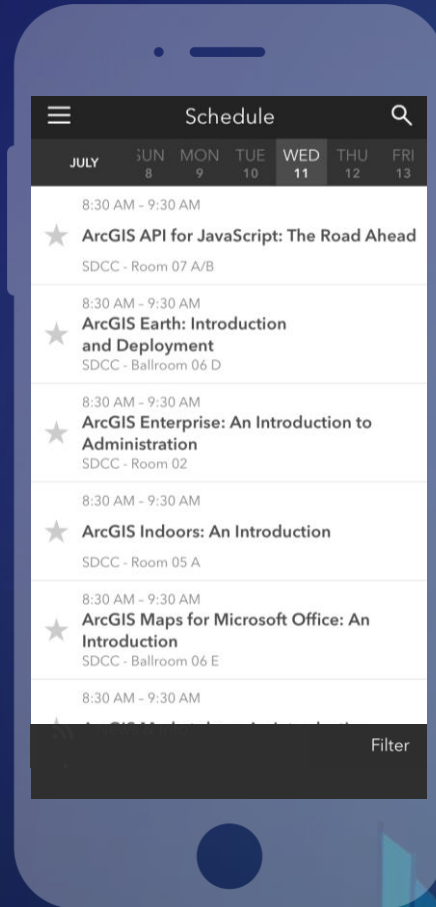
- **Take the time to plan your Web GIS presence**
 - **Consider scheduling a resource assessment**
 - **Plan the roles of your staff, set ownership responsibilities**
 - **Start with a simple application**

Please Take Our Survey on the App

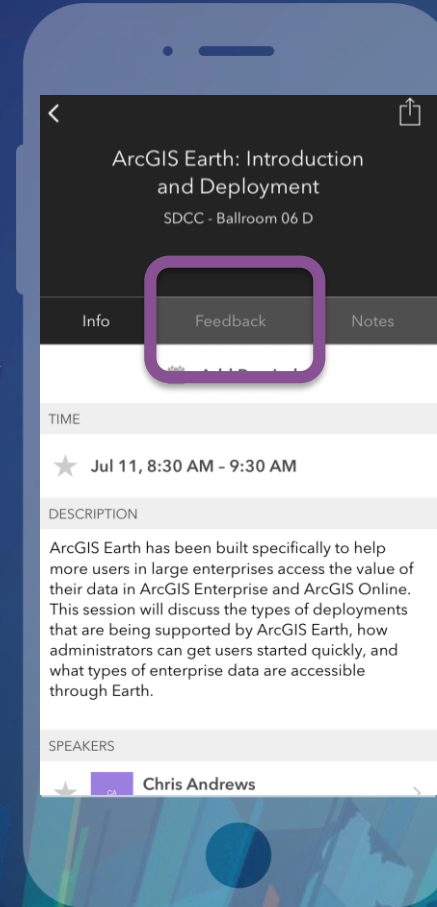
Download the Esri Events app and find your event



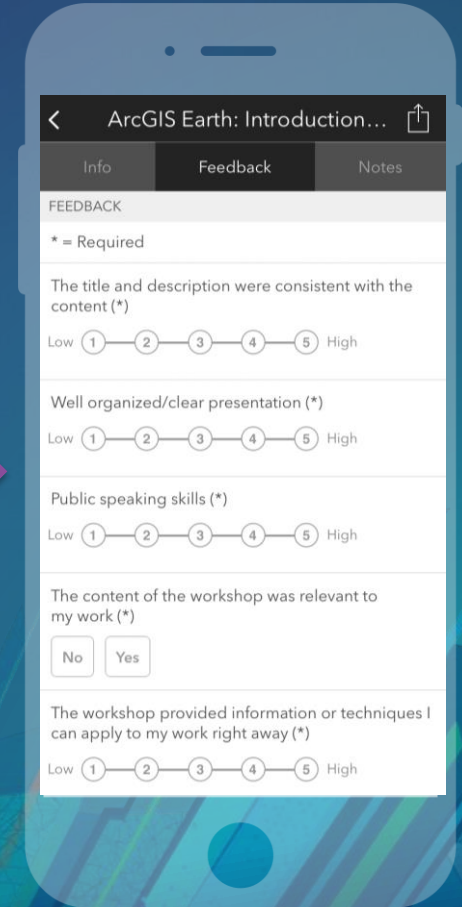
Select the session you attended



Select the Feedback tab



Complete answers and select "Submit"





esri

**THE
SCIENCE
OF
WHERE**