

Zero to 60 – FGUA’s Race to a Comprehensive Asset Management Program

2017 Esri User Conference – San Diego, CA, July 9, 2017

Presented By:

Douglas W Black, PSM, PLS

GIS/Real Property Coordinator



WWW.FGUA.COM

FGUA OPERATIONS OFFICE:

280 Wekiva Springs Road
Protegrity Plaza, Suite 2000
Longwood, Florida 32779
T 407-629-6900
F 407-629-6963

Why a Race?



WWW.FGUA.COM



FGUA Organizational Concept



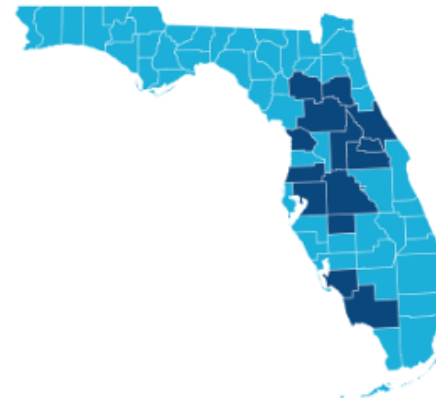
WWW.FGUA.COM

History

[Home](#) ▶ [About Us](#) ▶ [History](#)

The Florida Governmental Utility Authority was formed in 1999 through an interlocal agreement between Brevard, Lee, Polk and Sarasota counties. These four local governments desired to make the best use of their common responsibilities to acquire, own, improve, operate and maintain water and wastewater facilities.

By forming the FGUA, these counties used resource sharing to provide drinking and wastewater service to their citizens at a lower cost and with more local management. Since 1999, the counties making up the FGUA have changed. Today, the FGUA has over 80 systems in 14 counties across Florida. As of 2014, the FGUA provides service to over 100,000 customer connections.

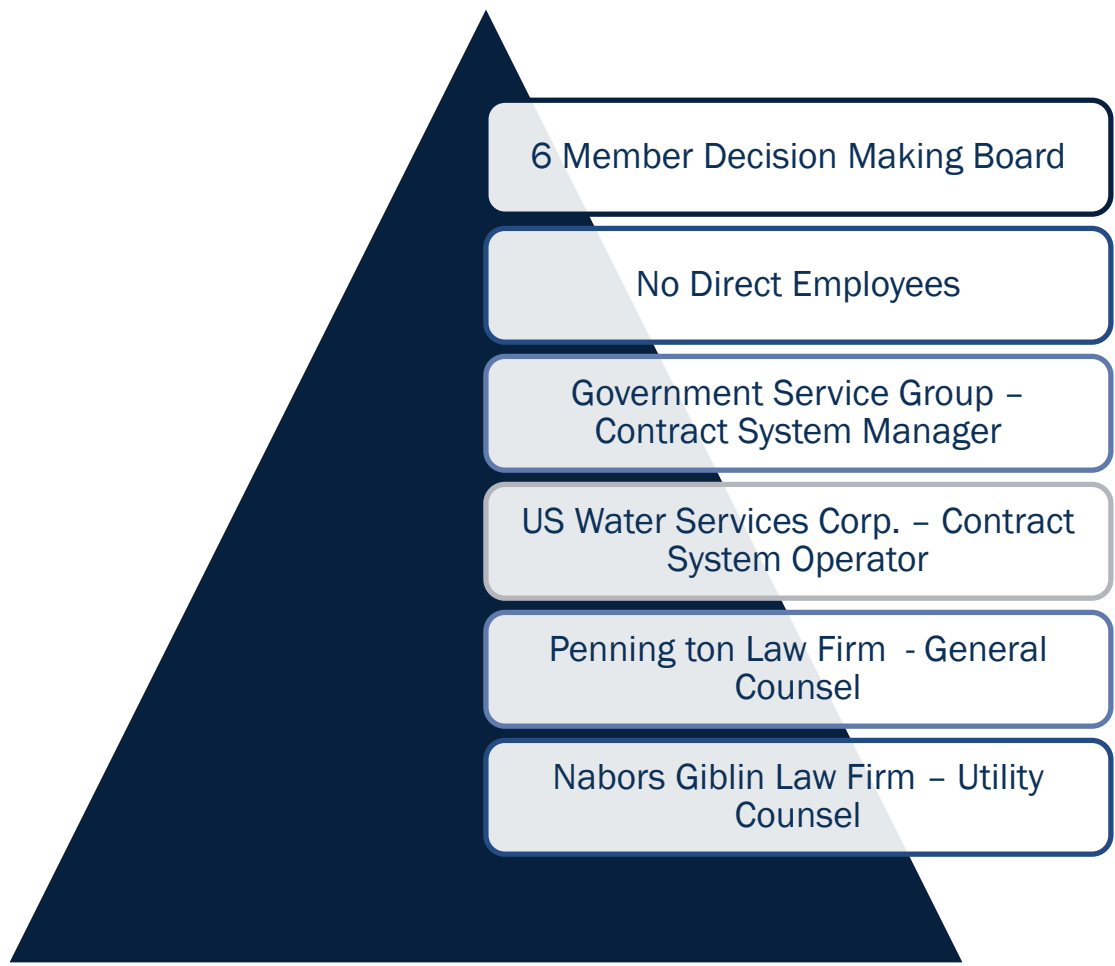


[« Back to About Us](#)



WWW.FGUA.COM

FGUA Organizational Structure



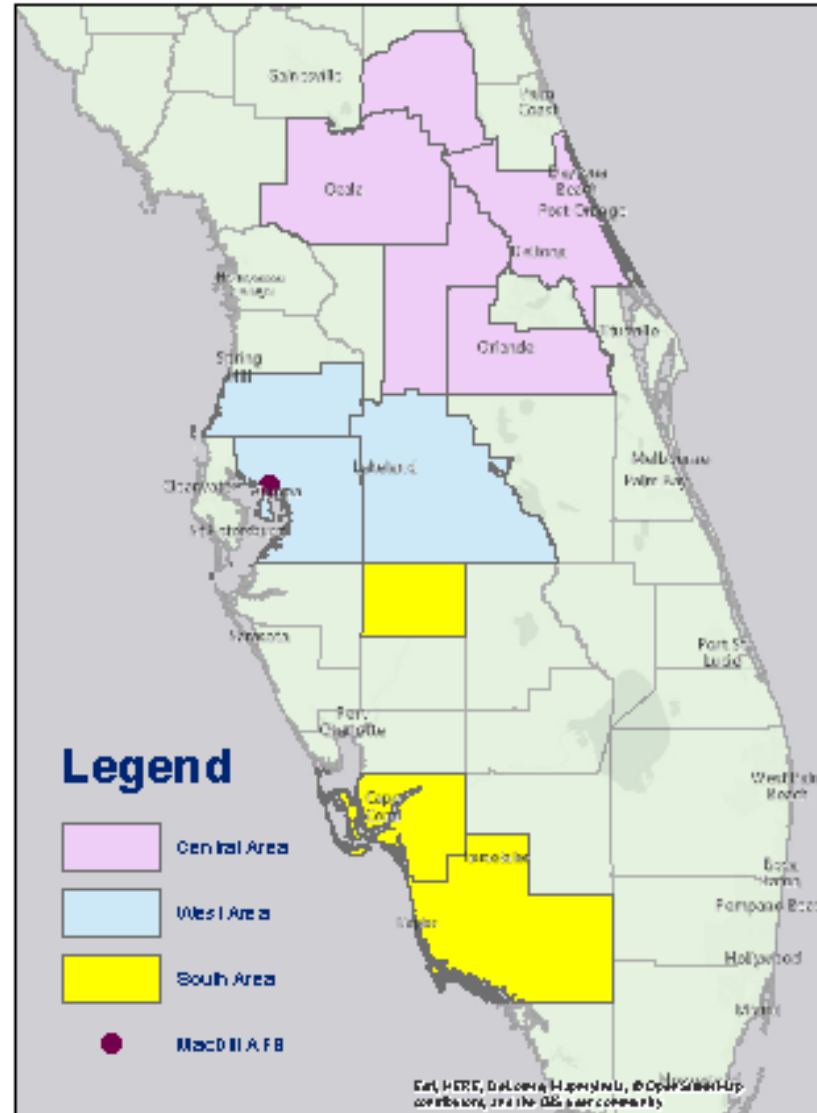
System Management Structure



WWW.FGUA.COM

4 Regional Management Areas

- Central Area
- West Area
- South
- Area
- MacDill Air Force Base



Unique System Characteristics



WWW.FGUA.COM

90 Separate Operational
Areas

58, 500 Water Service
Connections

52,800 Sewer Service
Connections

92 Water Treatment Plants

27 Wastewater Treatment
Plants

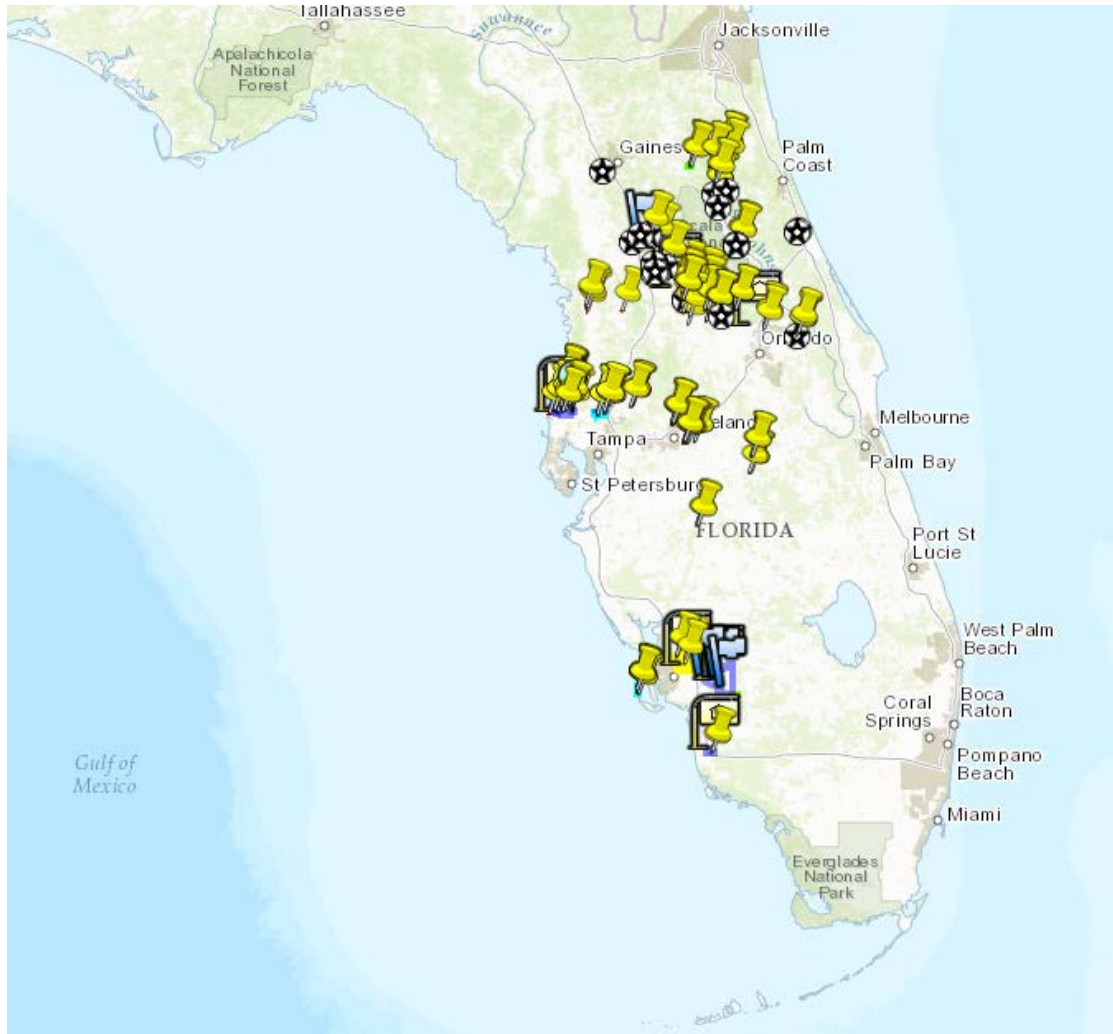
360 Lift Station South &
West Areas

1500 Miles of Pipelines
(estimated)

Unique System Characteristics



WWW.FGUA.COM



Unique System Characteristics



WWW.FGUA.COM

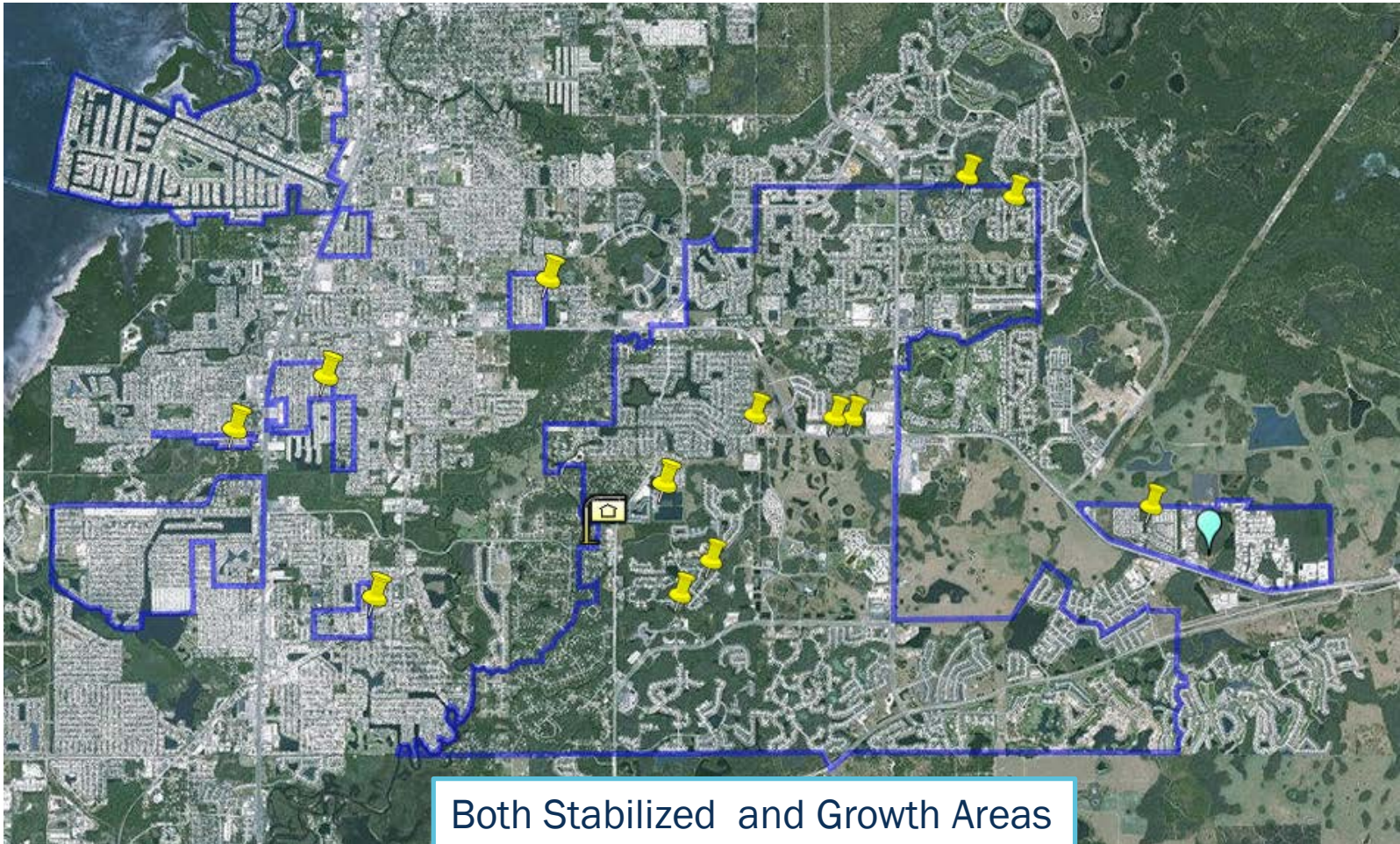


4.2 MGD WWTP



Small Package Plant

Unique System Characteristics



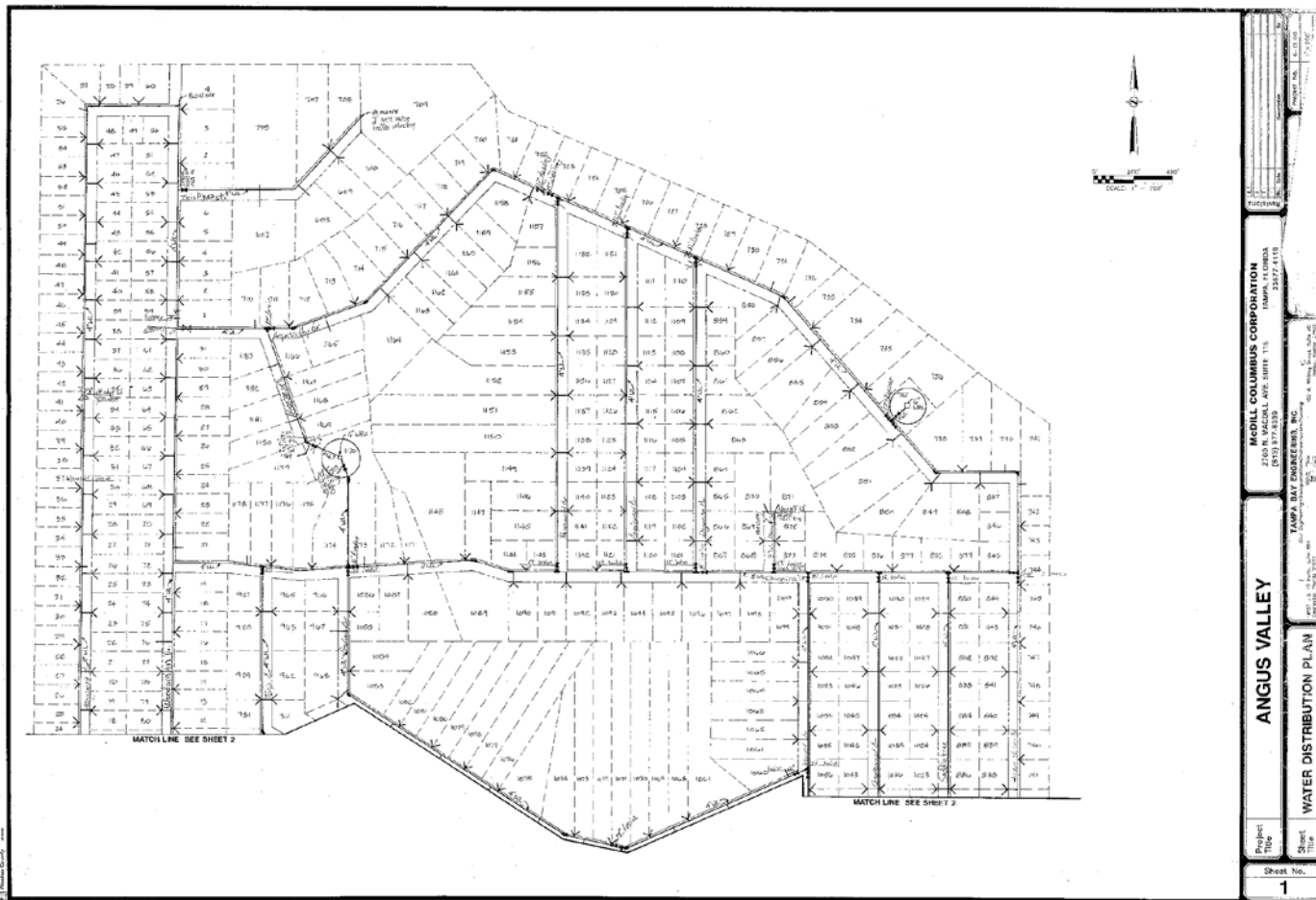
Both Stabilized and Growth Areas

Angus Valley Water System Map

PDF of a paper based system map



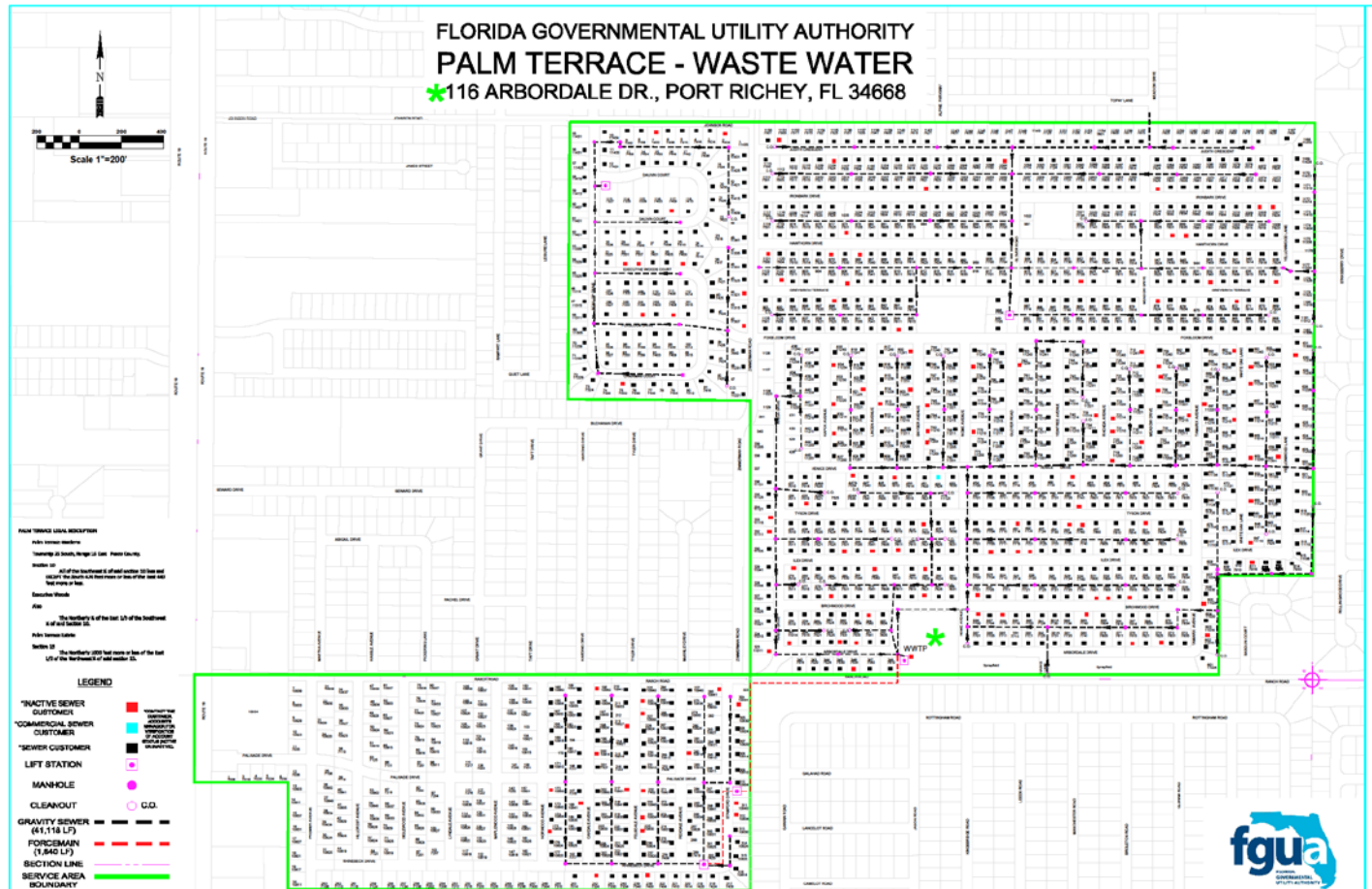
WWW.FGUA.COM



Palm Terrace Wastewater System Map – AutoCAD based, Received from the AUF Acquisition



WWW.FGUA.COM



So – Why the Race?

Asset Management Program



System Managers



FGUA's GIS Centric Implementation Strategy



ArcGIS Online Platform

ArcGIS Desktop Solutions

Cloud Based Server and Geodatabases

ESRI Enterprise Advantage Program (EEAP)

Local Government Information Model (LGIM)

Pre-Configured Mobile Apps

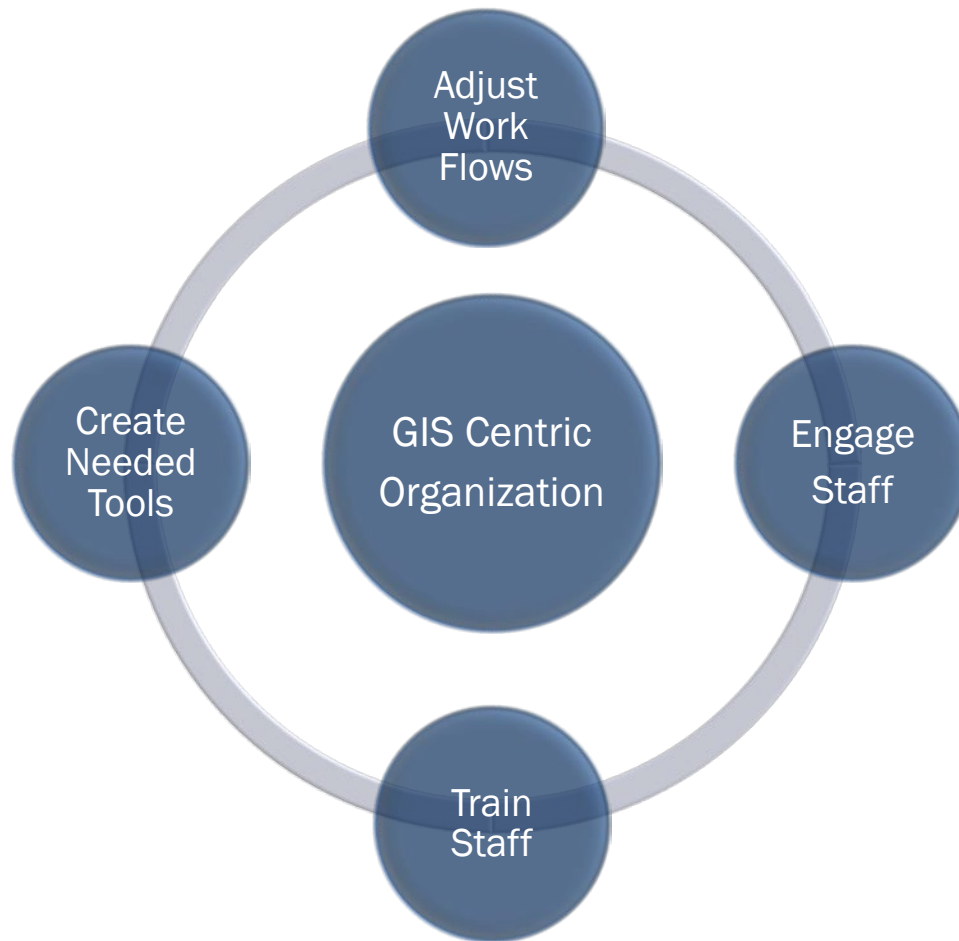
ESRI Training – Staff Engagement

ESRI Partner Solutions for Asset Management & Customer Service

FGUA's Organizational Implementation Strategy



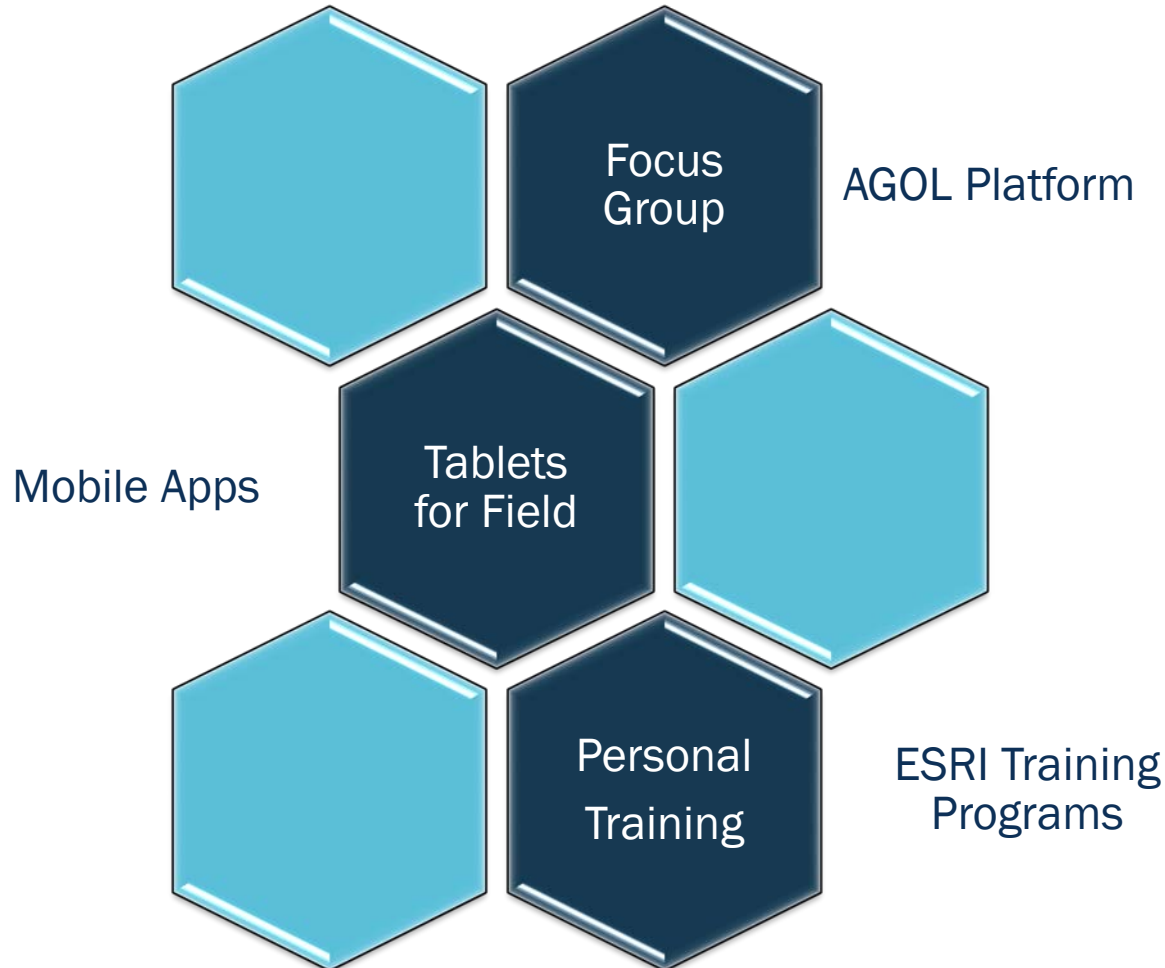
WWW.FGUA.COM



FGUA's Organizational Implementation Strategy



WWW.FGUA.COM



Use of Imagery For Spatial Relationships



Where We Are At in the Race

FY 2015

- West Area Asset Data Pilot Project
- Board Approval to Proceed With GIS Project

FY 2016

- GIS Online Portal Established
- GIS Server Spun-up In The Cloud
- South Area Asset Data Entry

FY 2017

- Tablet and Mobile Apps Launched for Field Crews
- Staff Training
- Central Area Asset Data Entry

FY 2018

- Select CMMS/Asset Management Platform – GIS Centric
- Integrate Operation Contractor
- Integrate Customer Service

FGUA's Asset Management System



WWW.FGUA.COM

THIS



Not This





WWW.FGUA.COM

THANK YOU !