

The logo for Geographic Information Services, Inc. (GISi) is located in the top left corner. It consists of the letters "GISi" in a white, sans-serif font, enclosed within a white circle. This circle is set against a dark blue, shield-like background that is part of a larger blue banner at the top of the slide.

GISi



Creating Insight Through Location Technology

Geographic Information Services, Inc.

State & Local Government Overview

GISi

2100 Riverchase Center, Suite 105 - Birmingham, AL 35244 | Phone: (205) 941-0442 | Fax: (205) 982-7733

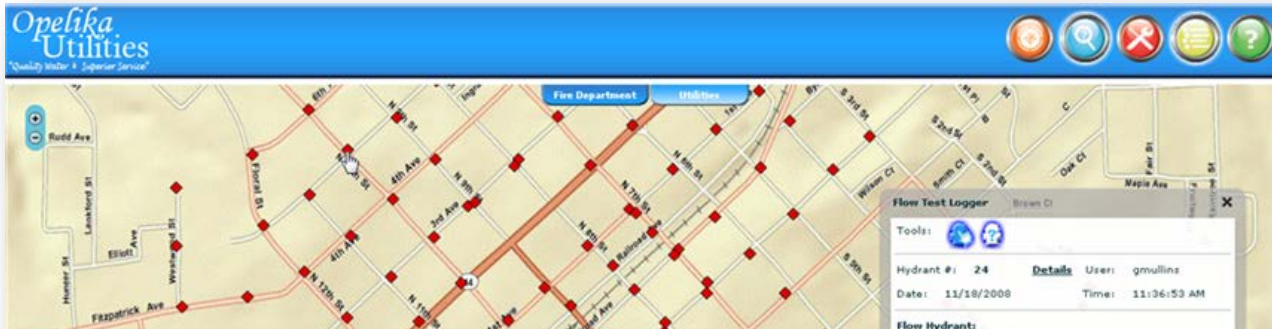
Who Is GISi

24 Years In Business
From a basement to nationwide

160 Passionate Geeks.
From coast to coast

1 Core Purpose.
Create insight thru location technology.

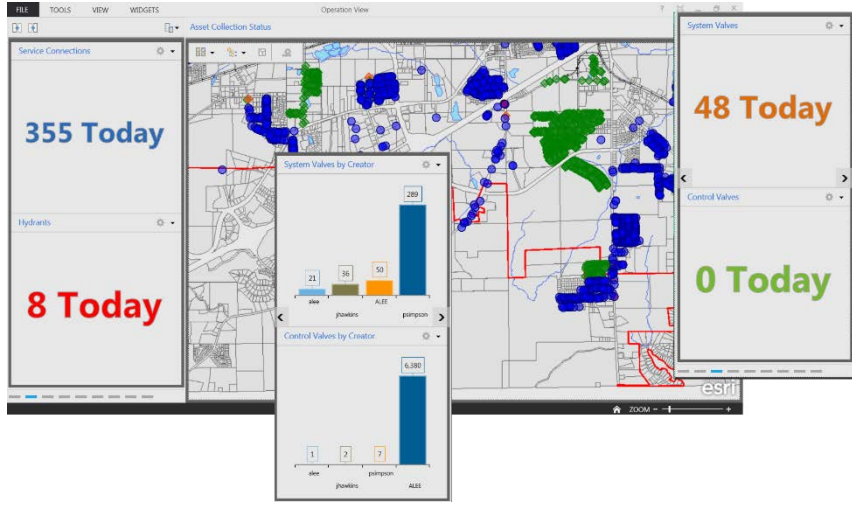




October 14th, 2013



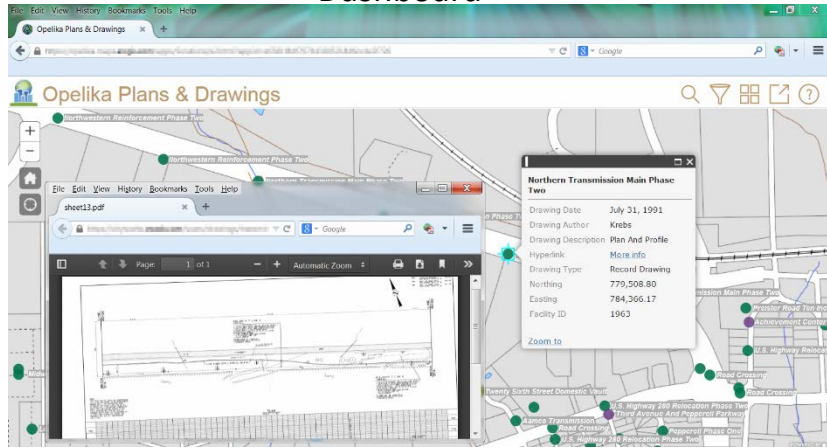
Opelika Utilities, AL



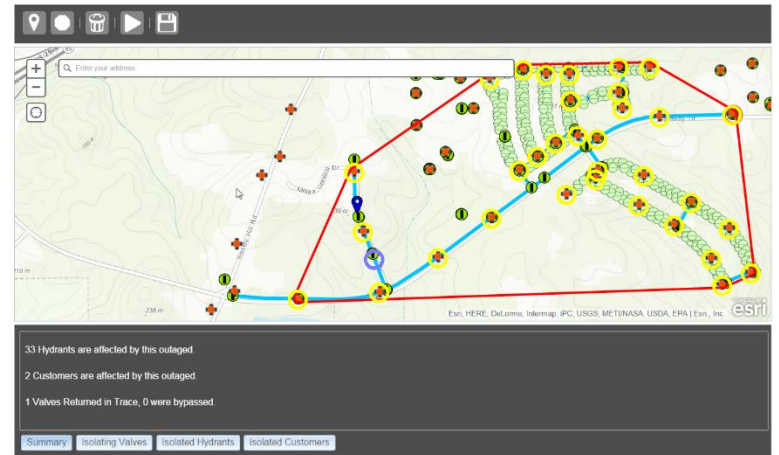
Data collection progress using the Operations Dashboard



Mobile data editing with ArcGIS Online

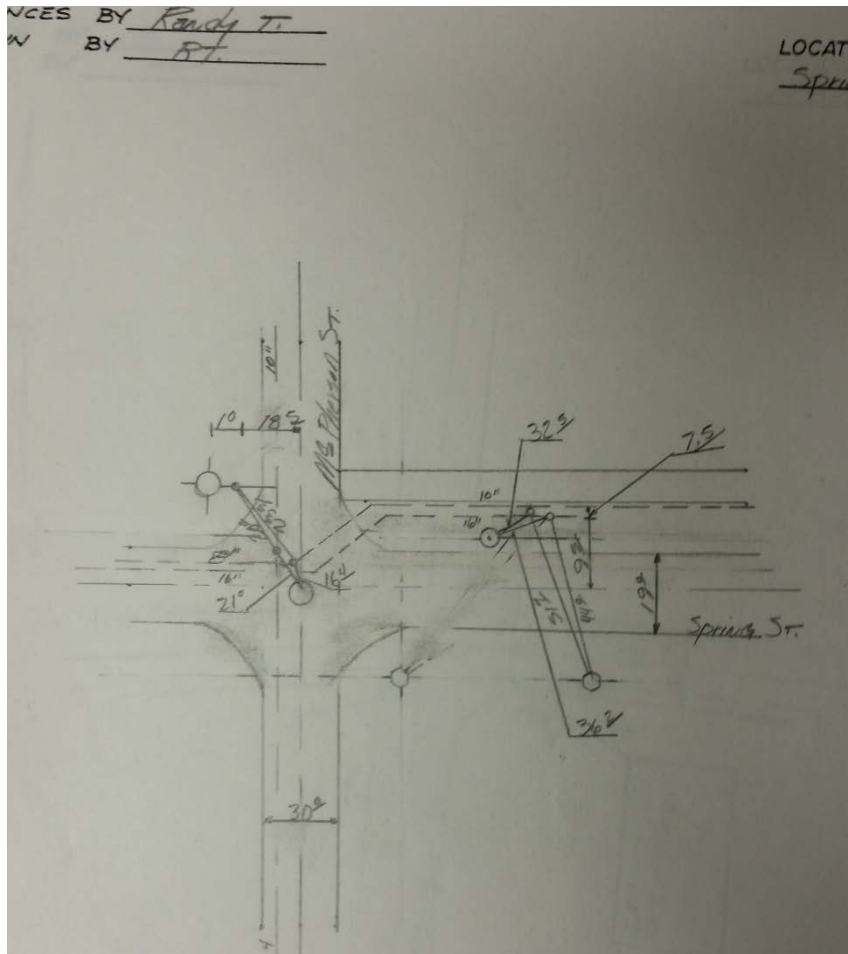


Field access to as-built drawings with the Plans & Drawing app



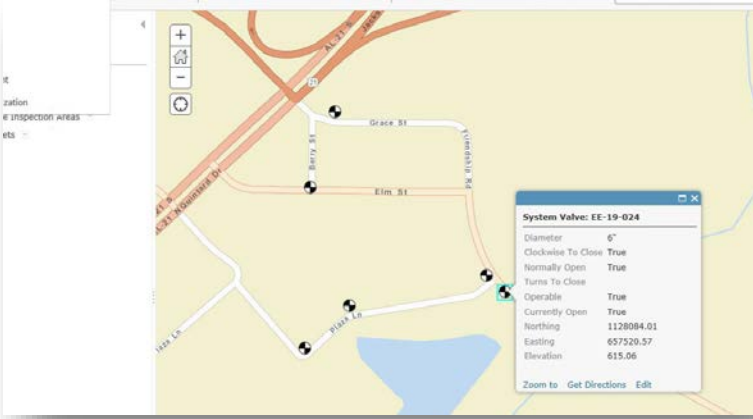
Advanced processes with the Utility Isolation Trace web app

Oxford Water Works & Sewer Board, AL

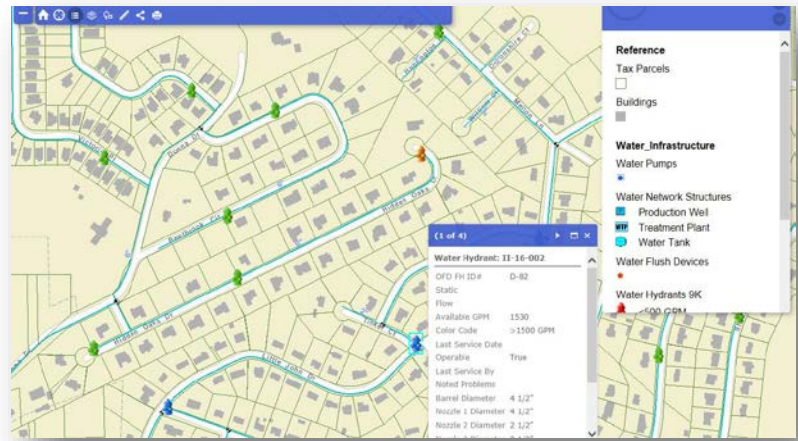


- Field crews use memory and paper maps with spilled coffee stains

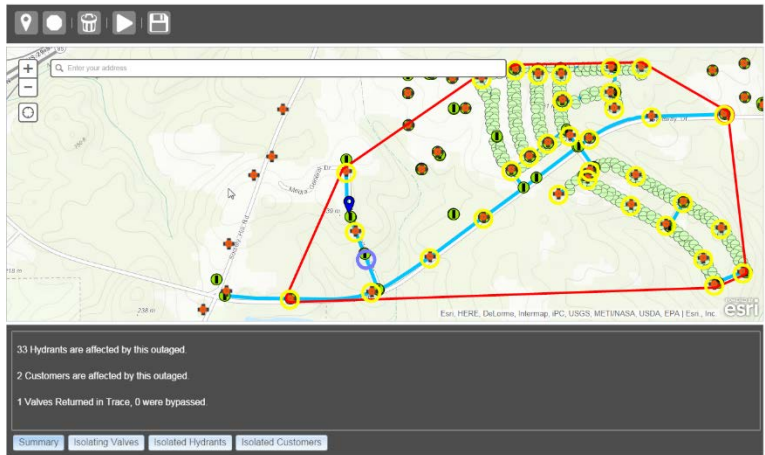
Oxford Water Works & Sewer Board, AL



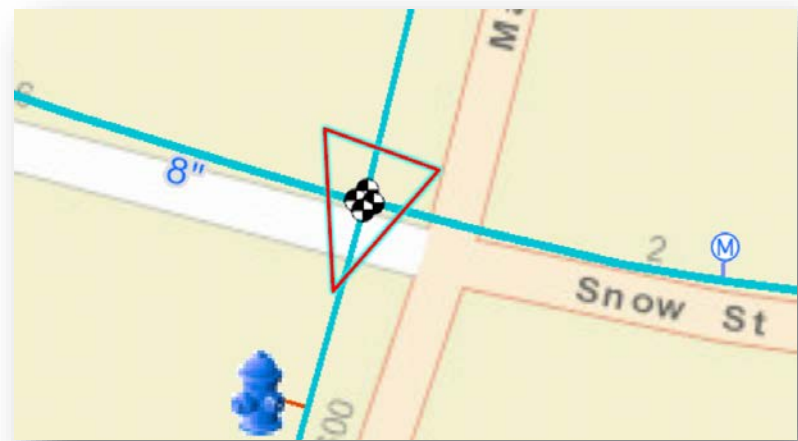
Valve Exercising



Water Infrastructure App



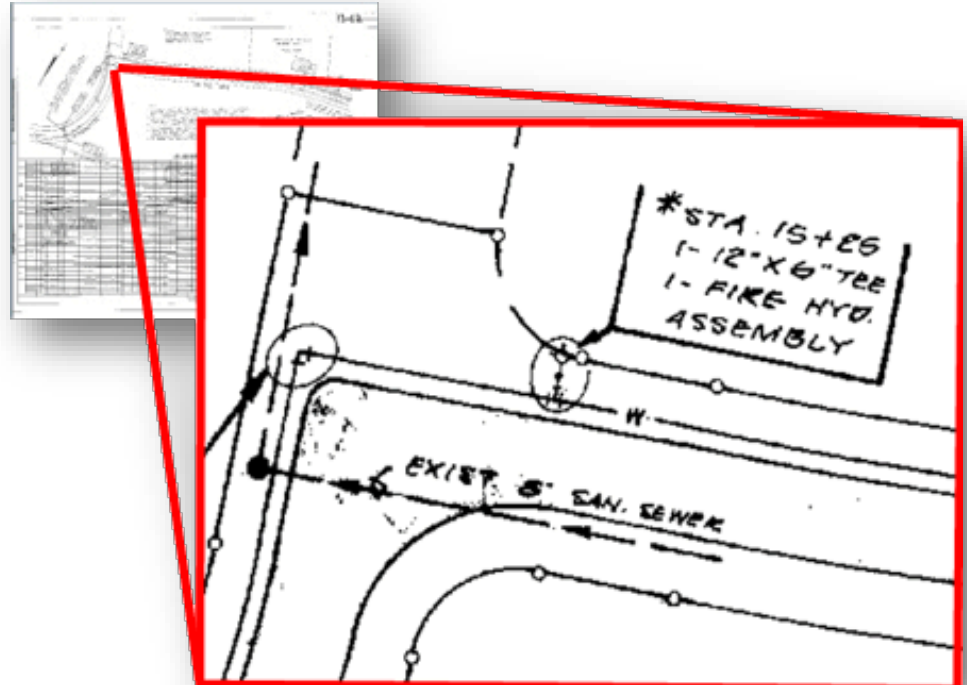
Advanced processes with the Utility Isolation Trace web app



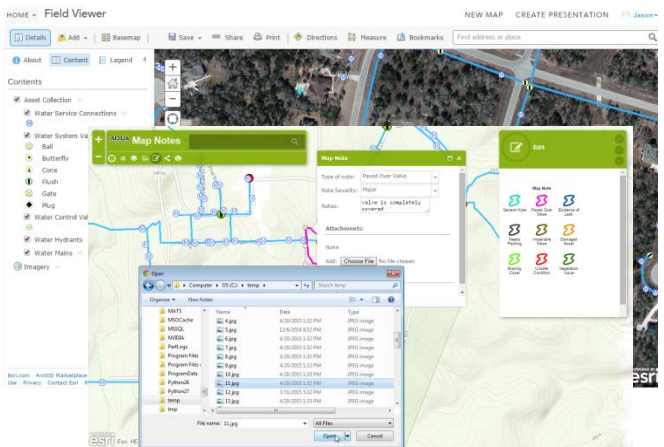
Map Change Request

Aqua Water Supply Corporation, TX

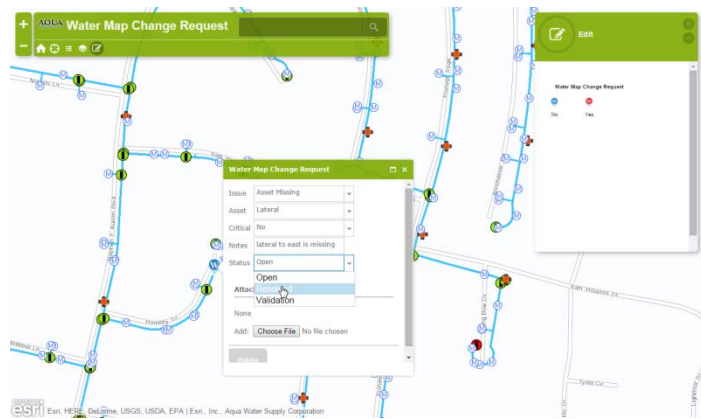
- GIS 1 Year Ago
 - No GIS Champion
 - Engineering Firm responsible for map updates
 - Field to Office was broke
 - Zero web/mobile access
 - Lots of paper!



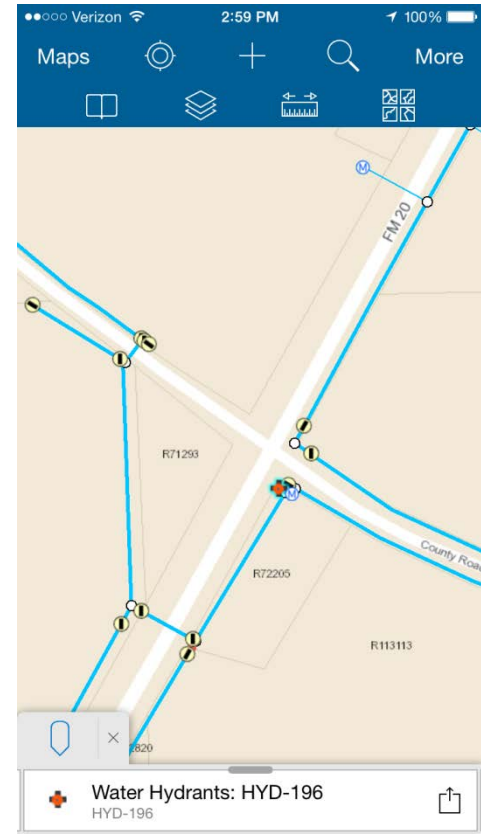
Aqua Water Supply Corporation, TX



Data updates communicated into field through multiple ArcGIS Online applications



Communication from field staff improved through Map Change Request



Attribute editing through Collector for ArcGIS on iPhone

Questions? Please Contact Us

Kevin Brown

Account Manager, State & Local Government

Office: 205.941.0442 x 437

Booth #2317

Email: kbrown@gisinc.com

[Website](#) | [Blog](#) | [Showcase](#)

