

Benefits of Utilizing ArcGIS Web Apps and Story Map Templates for Padre Dam Municipal Water District

Colleen Larsen, GIS Coordinator

Gavin Runyon, GIS/CAD Specialist

Yelena Granovskaya, GIS/CAD Specialist

About Padre Dam Municipal Water District

- **Service Area**

- Padre Dam provides water, wastewater, recycled water and recreation services to 100,000 residents in the San Diego suburbs of Santee, El Cajon, Lakeside, Flinn Springs, Harbison Canyon, Blossom Valley, Alpine, Dehesa and Crest



About Padre Dam Municipal Water District

- **History**

- **1955-formed by San Diego County Board of Supervisors to import water from the Colorado River. Originally named Rio San Diego Municipal Water District**
- **1976-Renamed Padre Dam and merged with the Santee County Water District.**
- **1980s-Acquired Alpine Highlands Water District and Crest Public Utility District.**
- **The District is named for the Old Mission Dam in Mission Trails Regional Park, built by Spanish missionaries circa 1807.**

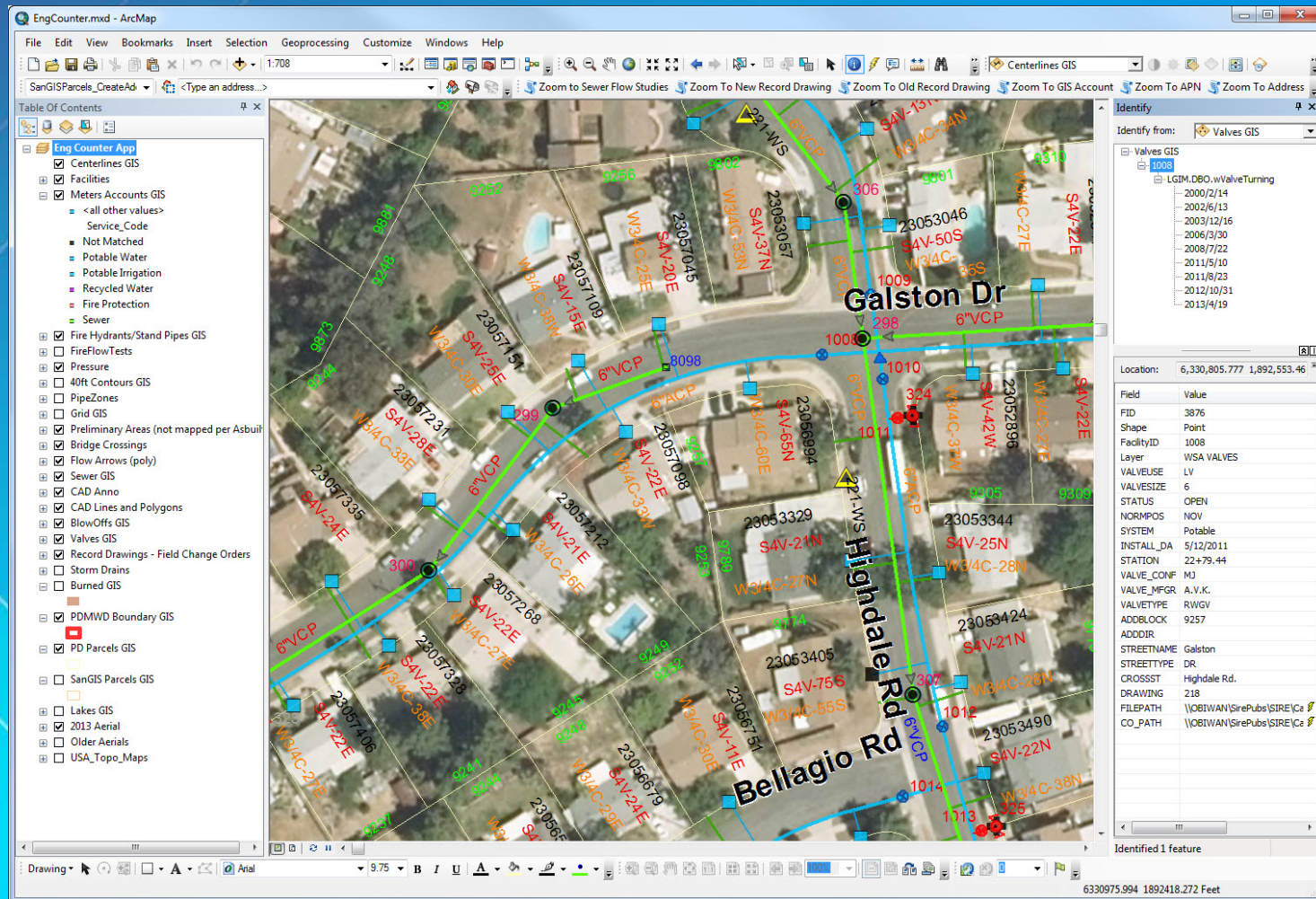
Padre Dam MWD Statistics

- **Total Service Connections ~25,125**
 - Potable & Sewer~13,600 Potable Only~9,700 Sewer Only~1,600 Recycled~225
- **Miles of Pipe**
 - Water: 389 Sewer: 165 Recycled: 26
- **Santee Lakes**
 - 190 acres, 7 lakes, 300 campground sites, 10 cabins
- **GIS Staff**
 - One GIS Coordinator
 - Two GIS/CAD Specialists
 - Split time between Engineering & Enterprise GIS

The Dissemination of GIS Data to all Padre Dam Employees

- **Small Utility Enterprise License Agreement**
 - **Meter counts: 10,001-50,000**
 - **Unlimited licensing for most ESRI software (Step 1)**
 - **ArcGIS Desktop installed on Operations, Engineering, Customer Service and Public Information PC's.**
 - **Most staff have been trained to pan, use the address locator, zoom to XY coordinates, find, query, ID in order to either get information needed for their jobs and/or to print maps.**
 - **Access to web based virtual campus/Instructor led training.**

The Dissemination of GIS Data to all Padre Dam Employees

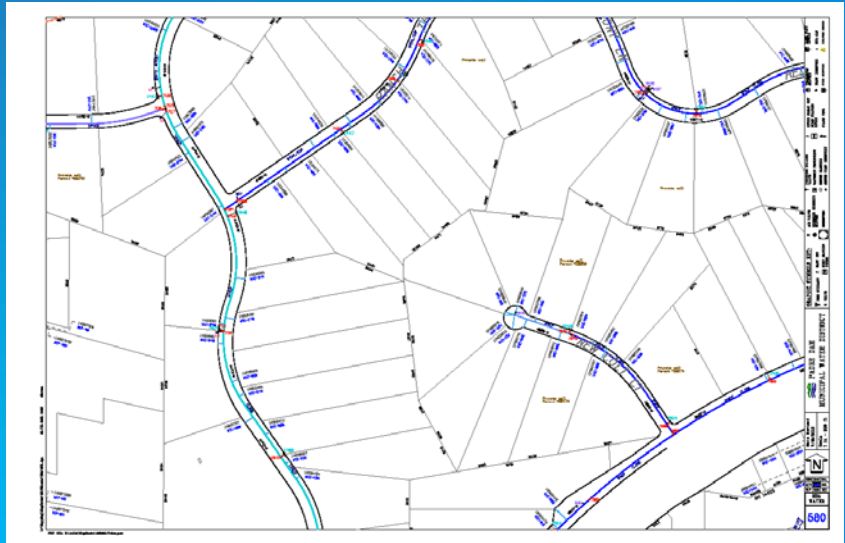


ArcGIS Online Applications

- **Organizational applications**

- **Tiled Infrastructure**

- Emulates 200' scale map books
- (cached tile layers)



- Open As-builts and field change orders
- With location services turned on via tablets or smart phones,
- easy to find assets in the field.



ArcGIS Online Applications

- **Organizational applications**

- **Construction Meters**

- Helps meter readers find construction meters out in the field
- Assists Development Services and Customer Service in the decision making process during the application process.

- **Status of Development Services Projects Story Map**

- Used Map Series Accordion Layout
- Shared within organization for managers to know status of Development Projects.

ArcGIS Online Applications

- Organizational applications
 - Operations Yard Improvement Project Story Map
 - Used Map Tour and Map Journal
 - Updated weekly to show progress



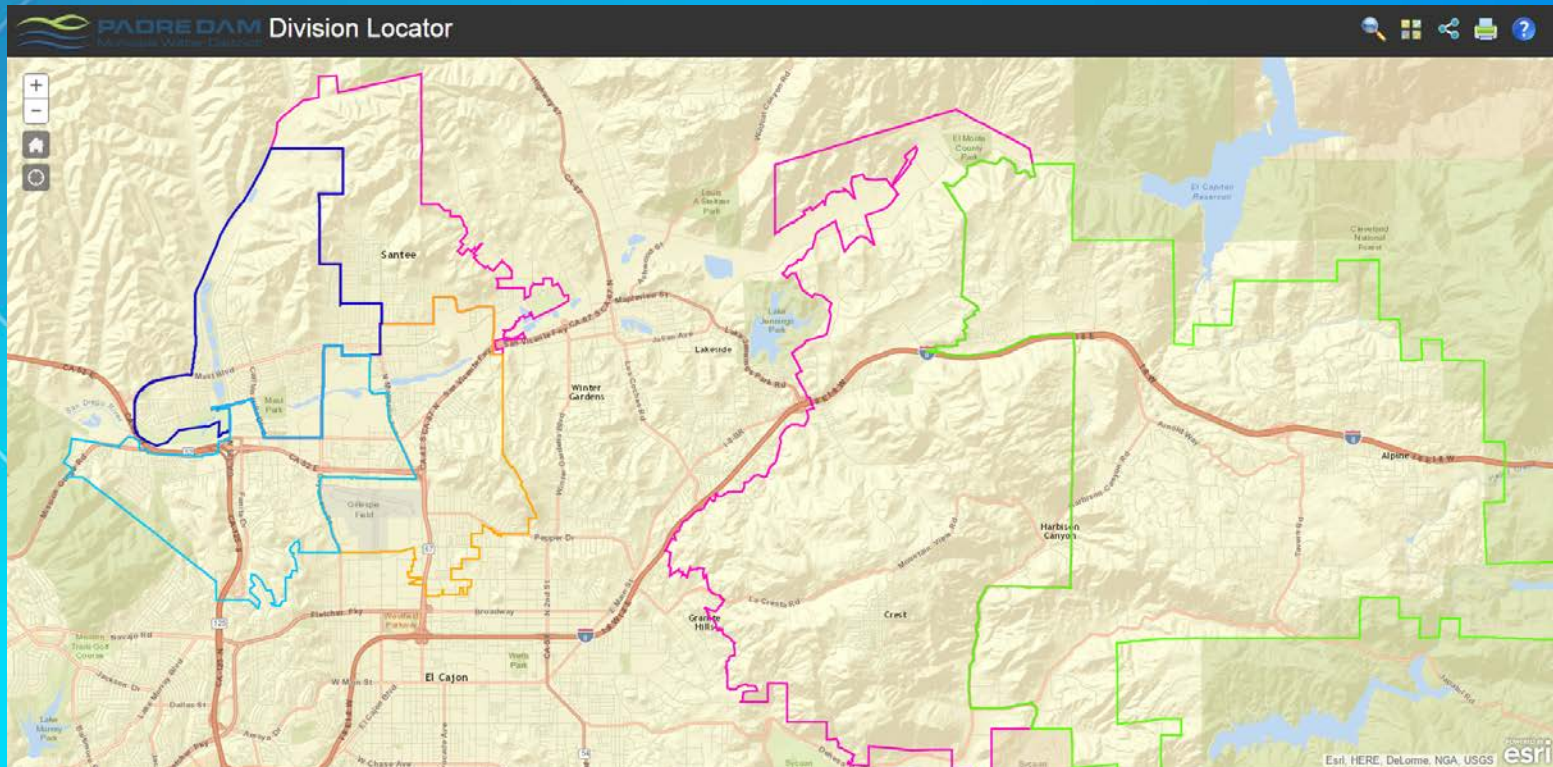
ArcGIS Online Applications

- **Public Facing applications**

- Padre Dam MWD Division Locator

- Used parcel template

- User can search by address or zoom to location to see their Board of Director and Division area.



ArcGIS Online Applications

- **Public Facing applications**

- Development Services Current Projects Story Map

- Used the Map Tour and Map Journal templates
- Displays current project locations, summary of project and photos

Padre Dam Municipal Water District
Engineering Development Services Current Projects

Padre Dam Municipal Water District

Engineering Development Services

Development Services is responsible for reviewing development plans and assisting developers, engineers, and property owners through the planning, approval, and installation of new water, sewer, and recycled water facilities. This division is also responsible for mapping of developer constructed facilities. The inspection staff provides quality assurance to private development, City and County projects, and Capital Improvements Program projects as well as utility mark outs via Dig Alert. Below are the active projects the department is currently working on. Click on the slides or use the arrows to navigate through the map.

1. GLENN COUNTY WATER SERVICES: Prospect Ave Corridor Enhancement

2. PARC ONE: Parc One

3. GLENN COUNTY WATER SERVICES: Town Center Parkway Street Improvements

4. SAN DIEGO COUNTY SHERIFF: Las Colinas Detention & Reentry Facility Expansion

5. LANTERN CREST: Lantern Crest

6. GLENN COUNTY WATER SERVICES: San Diego River Trail

7. ALPINE LIBRARY: Alpine Library

8. EL NEPAL ESTATES: El Nepal Estates

9. GLENN COUNTY WATER SERVICES: Buena Vista Ave & Railroad Ave Street Improvements

10. PARDEE HOMES: Castlerock

11. FUTURE PURPOSE IMPACT: San Diego Christian College Student Residences

12. KB HOME: Canyon Hills

ArcGIS Online Applications

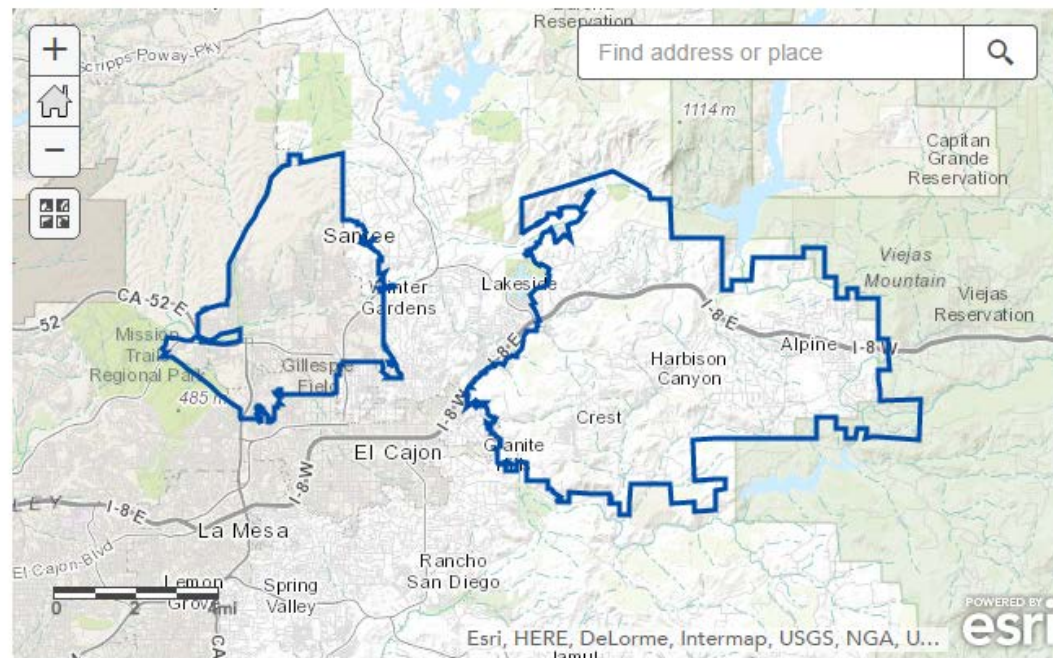
- **Public Facing applications**

- Potable Construction Meter Request

- Embedded Web Map

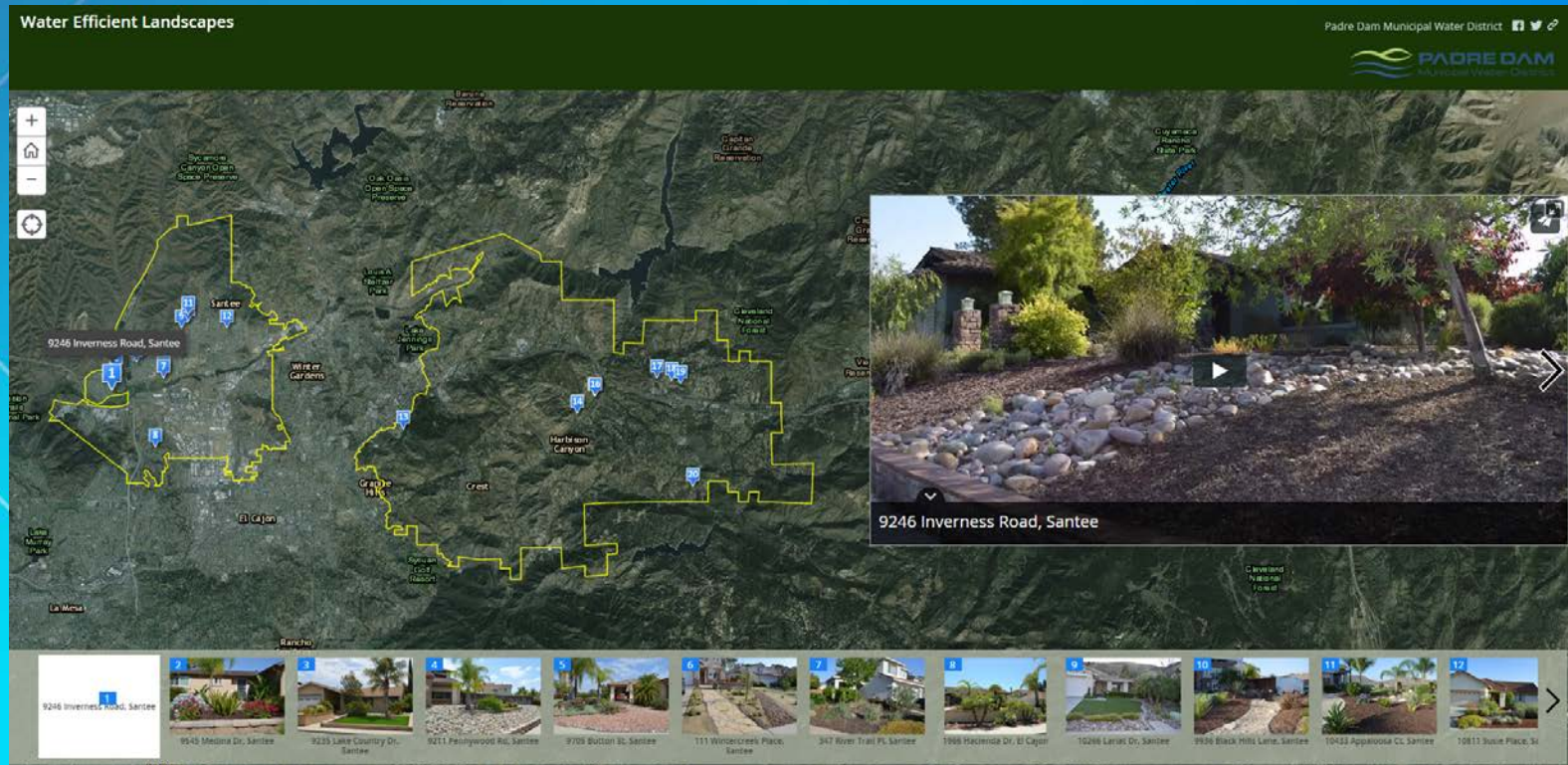
- User zooms into map to find nearest Fire Hydrant Asset ID

Enter the project address in the search bar below or navigate to the project area in the map.
Enter the fire hydrant number in the box above to request meter set location.



ArcGIS Online Applications

- Public Facing applications
 - Water Efficient Landscapes
 - Used the Map Tour template
 - Highlights water efficient landscaping throughout our District



Future Development of Web based Applications

- **Predictive and preventative maintenance**
 - **District planning on purchasing an enterprise asset management system**
 - In the meanwhile, field personnel want to record maintenance data while on site via tablets.
 - May use collector application or design simple data collection apps.
 - Already have databases for sewer and water with attribute data and maintenance data. Moving data to LGIM on ArcSDE
 - Valve Turning and maintenance
 - Fire Hydrant maintenance
 - Sewer flushing and condition assessment
 - CCTV
 - Meter maintenance
- **Finish CIP Story Map**
- **Create Map for Alpine Fire**
- **Create useful dashboards**

Questions?

