

UC 2023 – Water Sunday Meeting

Check-In 1:00-1:15

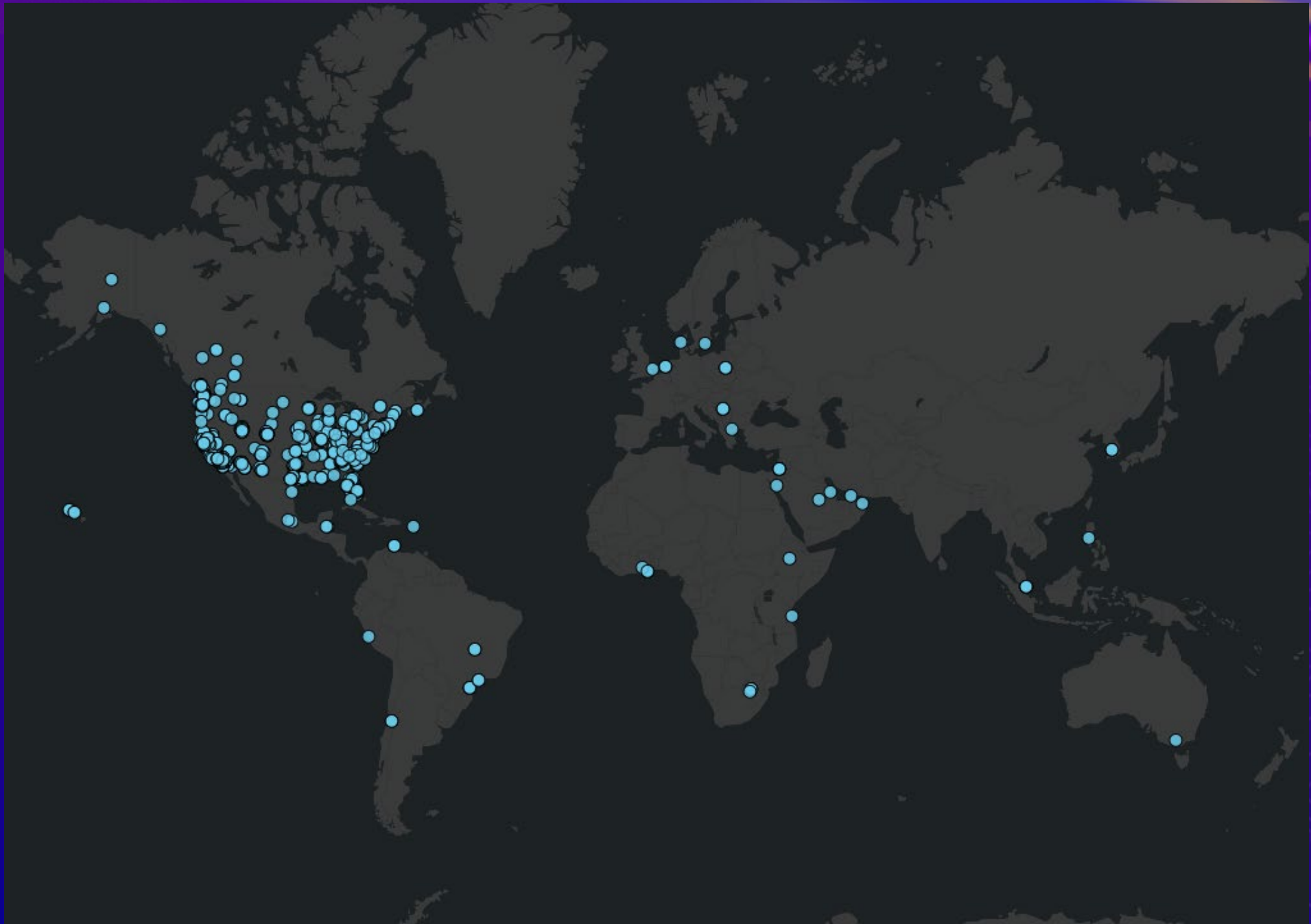
2023 ESRI USER CONFERENCE

Welcome!



Agenda

1:00 – 1:15	Registration/Check-in		
1:15 – 1:30	Welcome & Introduction	Derek Lorbiecki	Esri
1:30-1:55	Assets need BIM! How Milwaukee Metropolitan Sewerage District's BIM Vision Supports Vertical Asset Management and Operations.	Emily Champagne	Geospatial Manager, Milwaukee Metropolitan Sewerage District
1:55-2:25	Using GIS to Support Facilities and Vertical Asset Management	Matt Kennedy	Esri
2:25– 2:45	Break		
2:45 – 3:15	Network Management Options and Best Practices	Matt Groves	Esri
3:15 – 3:45	Utility Network Piloting and Management Perspectives	Eric Akiyoshi, P.E.	Engineering Manager – Infrastructure Planning, Irvine Ranch Water District
3:45 – 4:00	Water Industry Resources	Finn Swann	Esri
4:00 – 4:30	Training, Questions, and wrap-up		



Water Attendees:843

First Time at UC:313

29 Countries

- #1 Canada
- #2 Brazil
- #3 Malaysia

- #1 California: 301
- #2 Texas: 50
- #3 Washington: 32
- #4 Florida: 31

- Water: 394
- Wastewater: 83
- Stormwater: 22
- Water Resources: 191



GIS & Digital Water Report

The Foundational Role of GIS in Digital Water Transformation

Created in collaboration with Bluefield Research

The image shows the cover of the report, which features a blue and white design with water splashes and a globe. The title is prominently displayed in bold black text. Below the title, there is a line of text in orange and black. A teal button with white text is positioned below that. On the right side, there are two overlapping images of report pages. At the bottom right, the logos for Bluefield Research and Esri are displayed.

**GIS & Digital Water:
The Foundational Role of
GIS in Digital Water
Transformation**

A research collaboration with
Bluefield Research

Download the GIS and
Digital Water Report

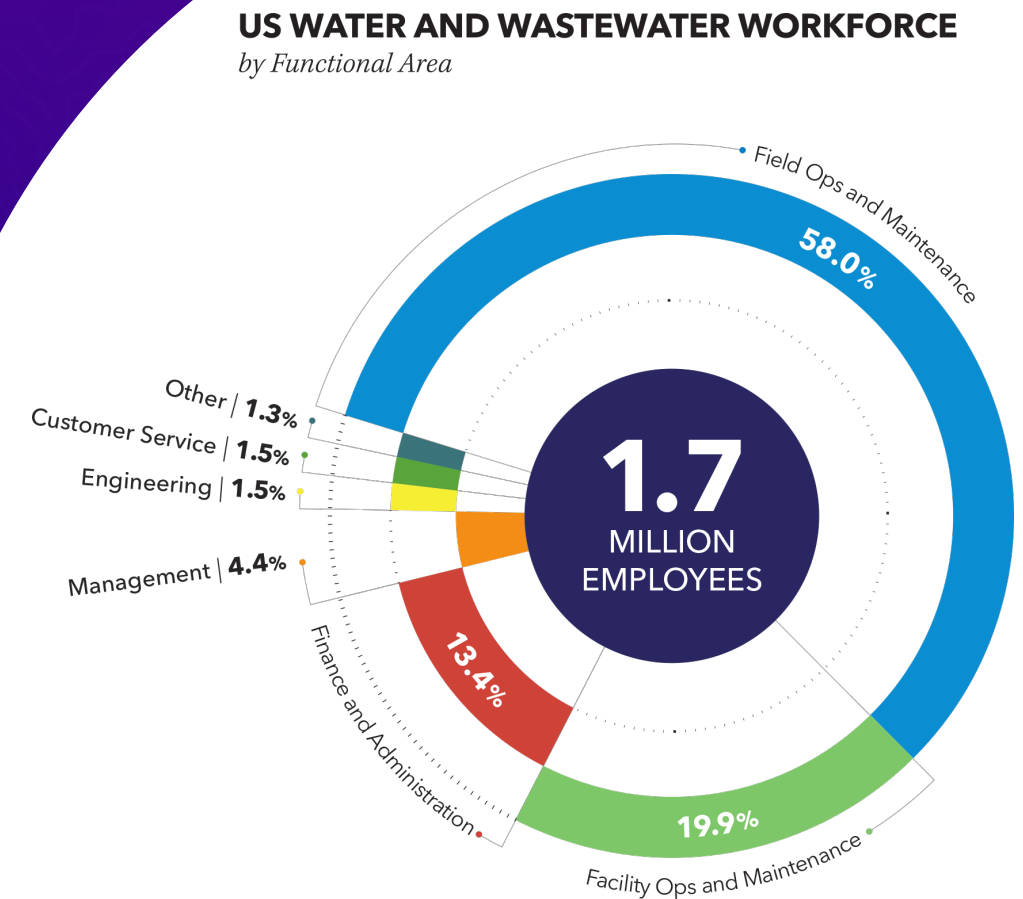
THE *big* PICTURE
WATER & WASTEWATER
NETWORK MANAGEMENT
A Complete GIS

bluefield RESEARCH

esri
THE SCIENCE OF WHERE

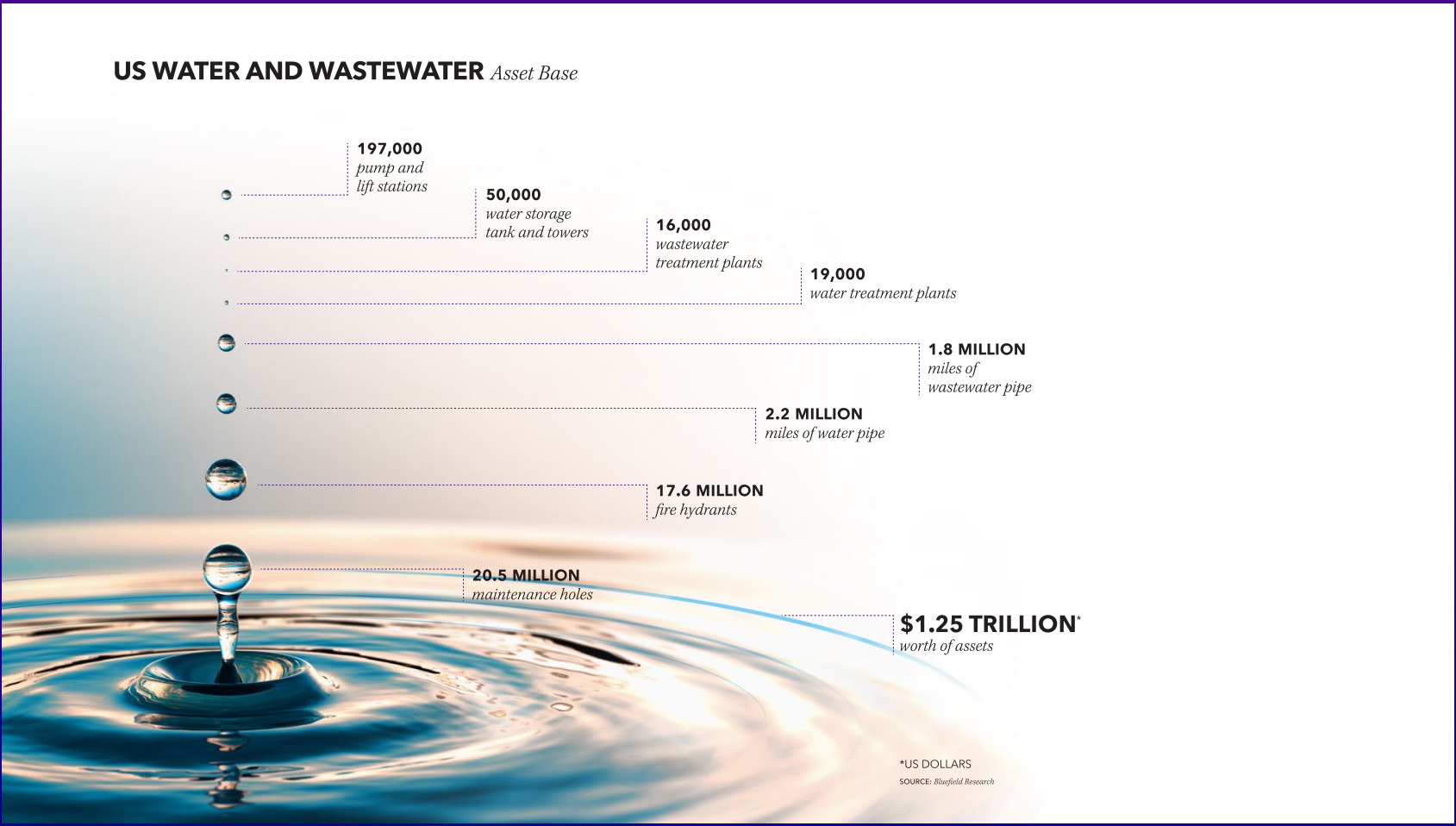
United States Water/Wastewater Industry

- 1.2% of the US Workforce
- Larger Workforce Than:
 - Farming, Fishing, Forestry (1.06M)
 - Secondary School Teachers (1.19M)
 - Post Secondary Teachers (1.69M)
 - Law Enforcement (1.23M)
 - Legal Occupations (1.49M)



United States Water/Wastewater Utility Assets

US WATER AND WASTEWATER *Asset Base*



*US DOLLARS
SOURCE: Bluefield Research

Water/Wastewater Industry Drivers for Modernization

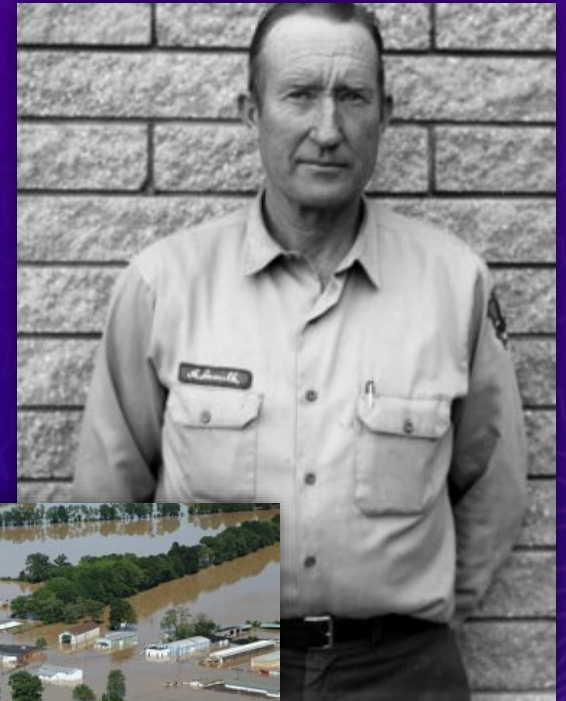
Unprecedented Challenges

Aging Infrastructure

Aging Workforce

Climate Change

Rapidly Evolving Technology



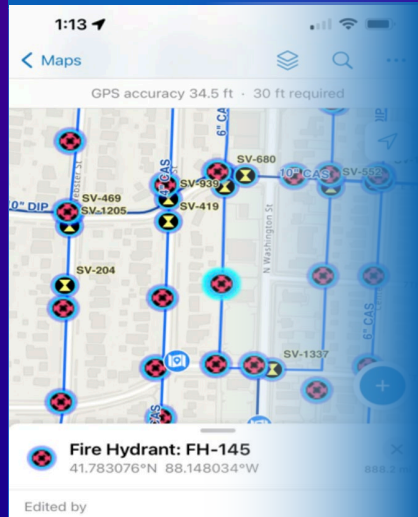
Strategic Initiatives

Water Sector Pillars

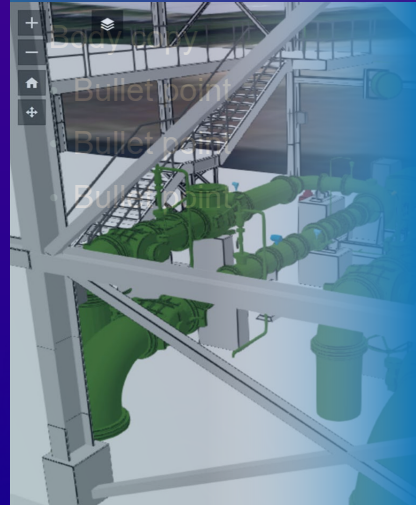
Network Management



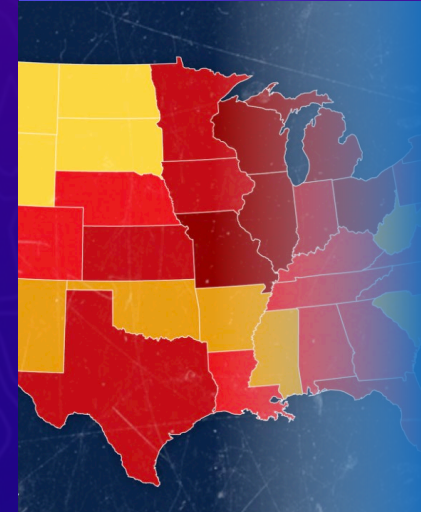
Coordinated Operations



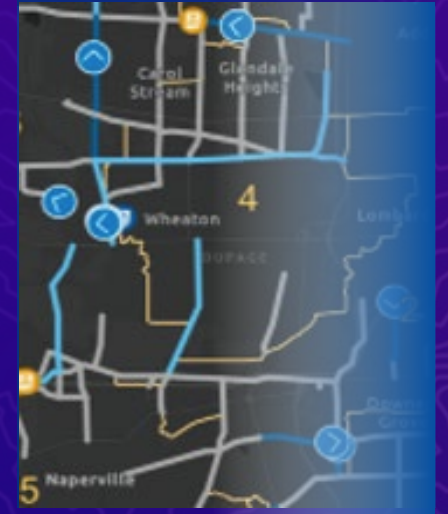
Facilities and Vertical Assets



Lead and Copper



Real-Time Analytics



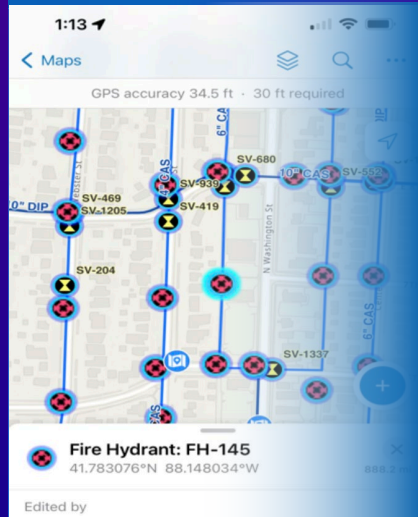
Strategic Initiatives

Water Sector Pillars

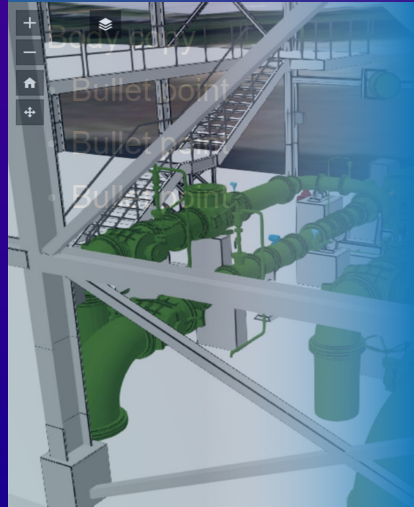
Network Management



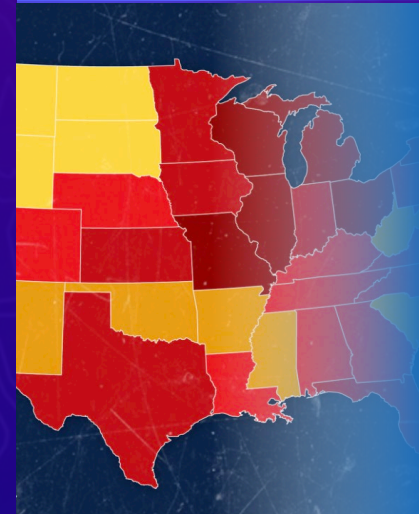
Coordinated Operations



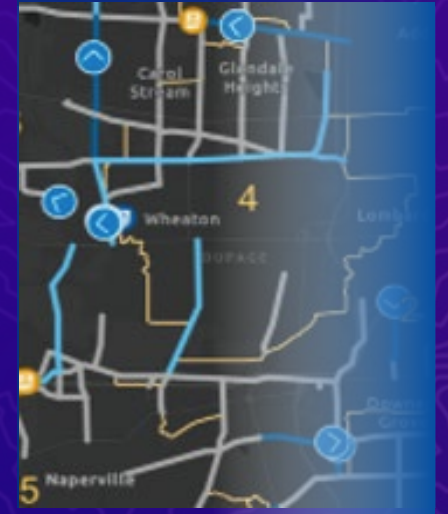
Facilities and Vertical Assets



Lead and Copper



Real-Time Analytics



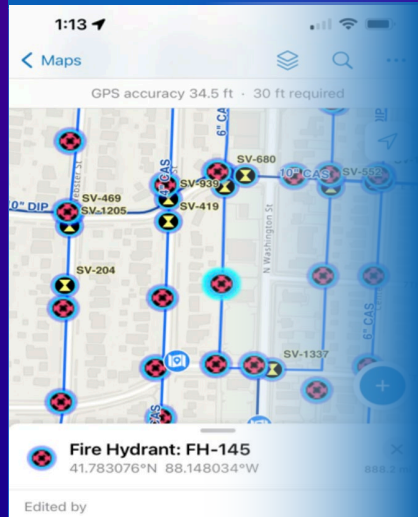
Strategic Initiatives

Water Sector Pillars

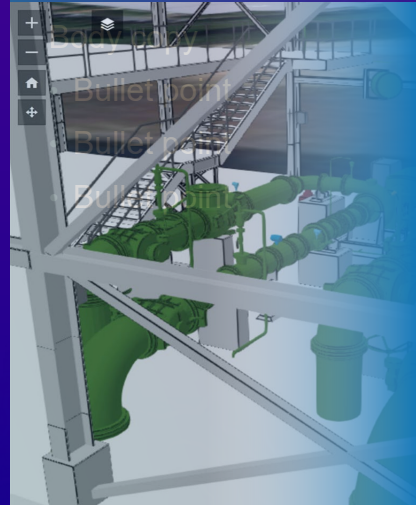
Network Management



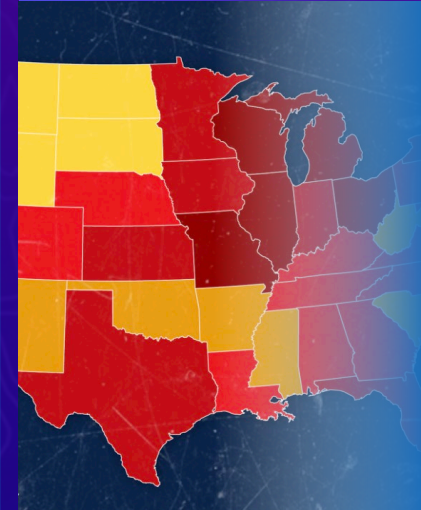
Coordinated Operations



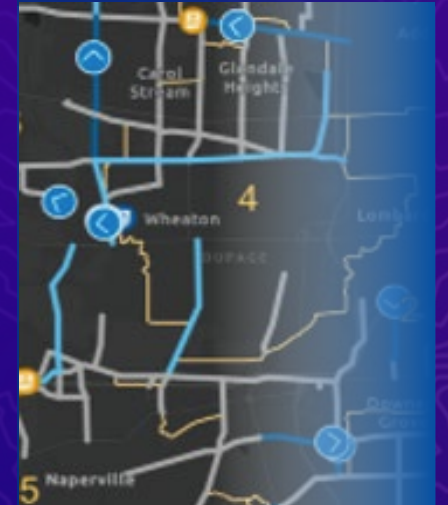
Facilities and Vertical Assets



Lead and Copper



Real-Time Analytics



Modern Approaches to Network Management

What is your Network Management Strategy?



Network Modeling to fit your needs



Visualization & Embedded Analytics

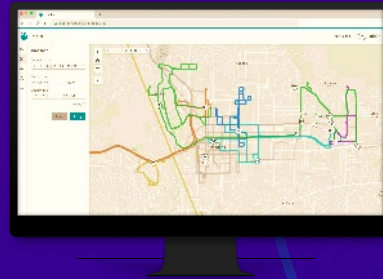


Accessed Anywhere Online/Offline

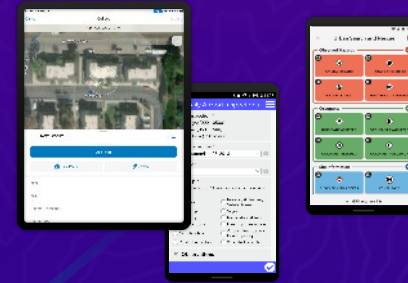
Ensuring Coordinated Operations

Collaborative access to accurate and timely data

Planning & Design



Dynamic Data Capture

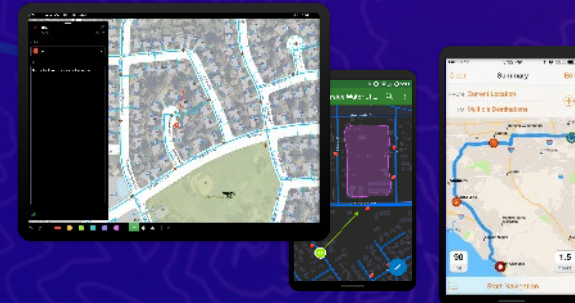


Real-Time Operations



Accurate & Timely Information

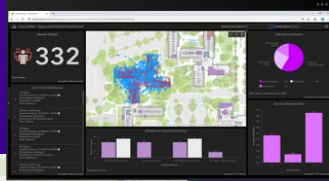
Increased Field
Productivity
Online/Offline



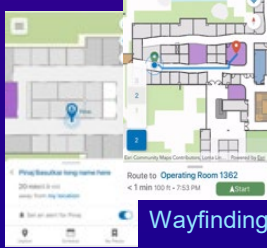
Facilities & Vertical Assets

Bringing the fidelity of your horizontal assets inside the fence
3D Information Model

Dashboards

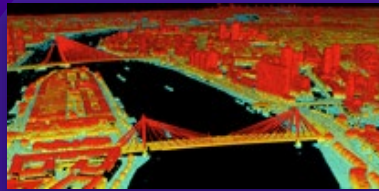


Asset Management



Location Sharing

Wayfinding



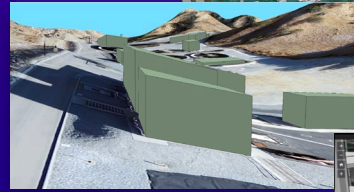
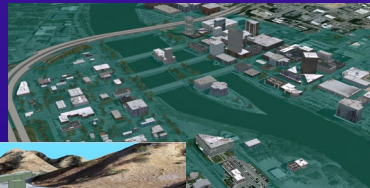
Point Clouds / Lidar

Hazen and Sawyer
HRSD



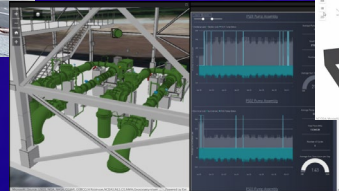
LandTec
Westford Water

Scene
Layers



Extrusion
Coachella Water District

Flood Mapping
ArcGIS Solutions



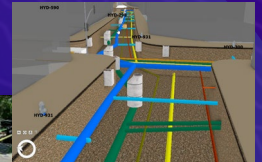
KCI
Gwinnett County



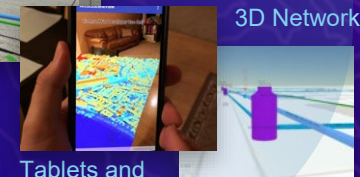
ArcGIS Indoors
Raleigh Water

Advanced Visualization

AR & VR



3D Networks



Tablets and
Phones



Using GIS to Support Facilities and Vertical Asset Management

Matt Kennedy - Esri

2023 ESRI USER CONFERENCE

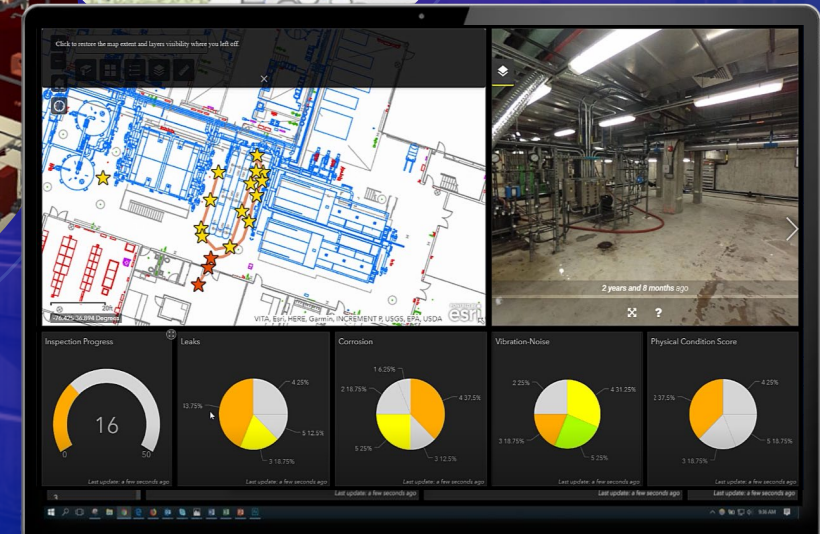
Approaching Facilities and Vertical Assets with GIS

A system for managing, sharing, and applying geographic information inside the fence

Asset Recording (SOR) and Mapping

Operational Workflows and Decision Support

3D Component for Data Visualization



GIS supports the lifecycle of Facilities and Vertical Assets



Design



Build



Operate

GIS supports the lifecycle of Facilities and Vertical Assets

Common patterns of adoption across the industry



Asset Management & Operations

- Understanding the assets in 3D space
- Locations to perform work upon
- Documentation for a changing workforce



Design Build

- Manage assets from cradle to grave
- Standardized set of contractor deliverables
- Support long term planning

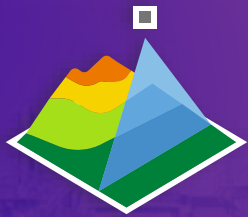


Network Management & Analytics

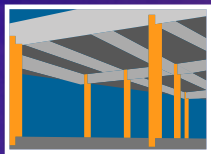
- Cross domain connections and impacts
- Real time behaviors and scenarios
- Predictive analytics

Steps to get started mapping Facilities & Vertical Assets

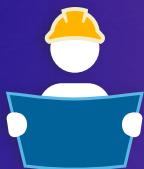
GPS Coordinate and Image Capture



Reality capture with Hardware



Import CAD / BIM Models



Digitize as built drawings

Incorporate into GIS



Simple Feature Services
(Marking Locations)



Configure Indoors and import
data into ArcGIS



Utility Network Data Model
supports F&VA out of the box

Beginning Workflows



High Accuracy Data
Collection



Connect BIM360 with
GIS for asset visibility



Design Web applications
tailored to your needs



Set up dashboards to
monitor and support
decisions



Deploy Indoors for
routing and wayfinding

Have a Great Week!