

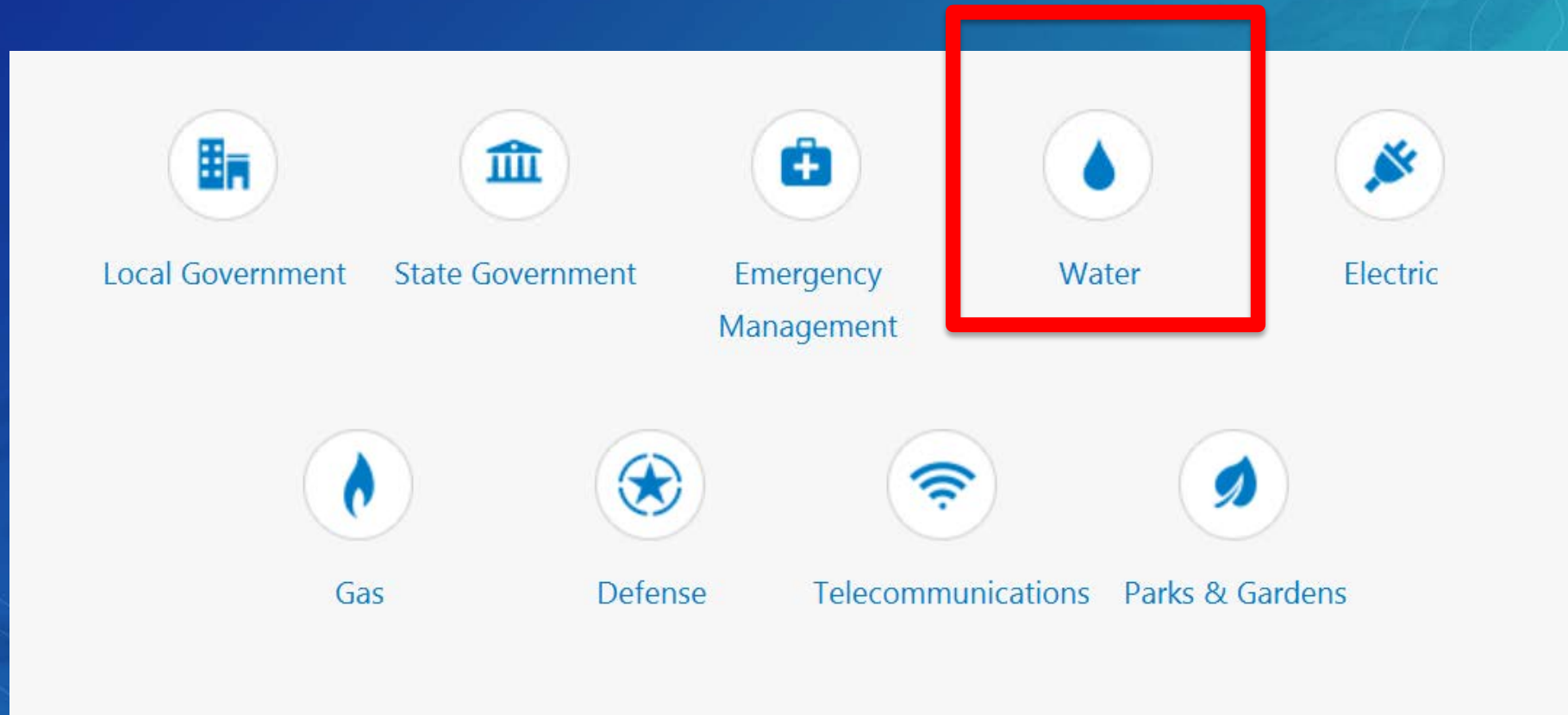
ArcGIS for Water Utilities Update

Howard Crothers

Clare Price

ArcGIS Includes 450+ Industry Specific Configurations

Collectively Referred to as ArcGIS Solutions



ArcGIS Solutions

A Core part of ArcGIS

- Free
- Supported
- Updated and enhanced
- Well documented
- Open source

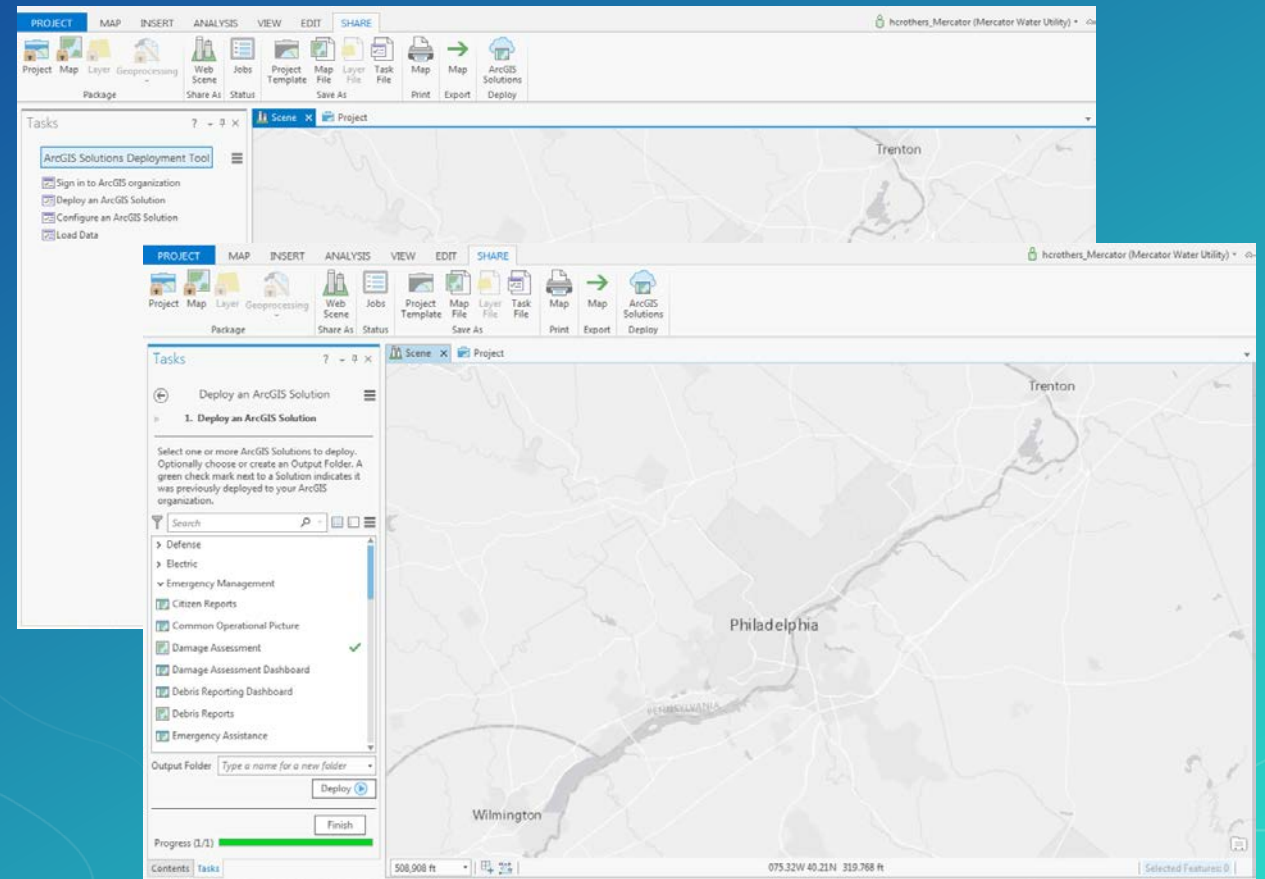
Updates Since Last UC

The background features a warm orange-to-red gradient with a crumpled paper texture. In the lower portion, there are layered, wavy shapes in shades of blue and purple. The bottom-most layer contains a faint, light blue grid pattern.

ArcGIS Solutions Deployment Tool

Automatically Deploy ArcGIS Solutions

- Deploy ArcGIS Solutions using ArcGIS Pro to ArcGIS Online or Portal for ArcGIS
- Currently includes 228 Solutions
- Has tasks to assist with configuration and data loading
- Delivered as an ArcGIS Pro Add-in



Removing Datasets from the Local Government Information Model

- March 2017 removed water, sewer and stormwater datasets from the LGIM
- Moved to series of geodatabases included with individual ArcGIS Solutions
 - Water Utility Network Editing and Analysis includes WaterUtilities.gdb & ReferenceData.gdb
 - Capital Planning Improvement includes WaterUtilities.gdb & CapitalImprovementPlanning.gdb
 - Etc.
- Data Dictionary
 - <http://solutions.arcgis.com/utilities/water/help/network-editing/DataDictionary/DataDictionary.Htm>

Why Remove Water, Sewer & Stormwater from the LGIM?

- Simplify implementation
 - Most water utilities don't use majority of LGIM
- Most water utility implementations use a mix of hosted feature layers and GDB(s)
 - The LGIM promoted storing data in a GDB
 - Many ArcGIS Solutions use hosted feature layers
- Reduce download size
 - LGIM sample data resulted in very large downloads
- Make implementation more modular
 - Laying groundwork for the utility network

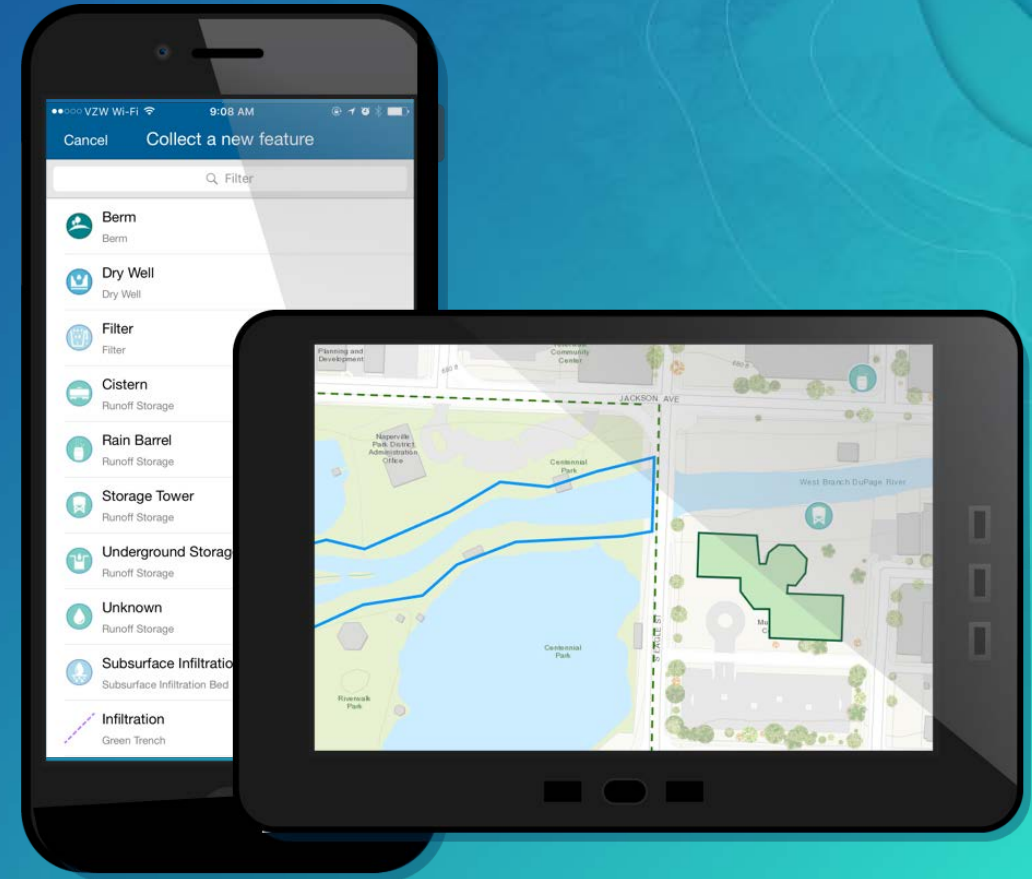
Building New Stormwater Solutions

- Requirements:
 - Support both planned and ad-hoc asset inventory and inspection
 - Enable everyone in organization to view assets in a web browser
 - Enable select people to edit assets in a browser
 - Information model supports NPDES/MS4 compliance and includes natural and man-made assets
 - Fully leverage ArcGIS
 - Modernize use of services to power maps and apps
 - Simplify deployment and management

Stormwater Inventory and Inspection

Deploys Set of Maps and Apps to Support Stormwater Field Inventory and Inspection Workflows

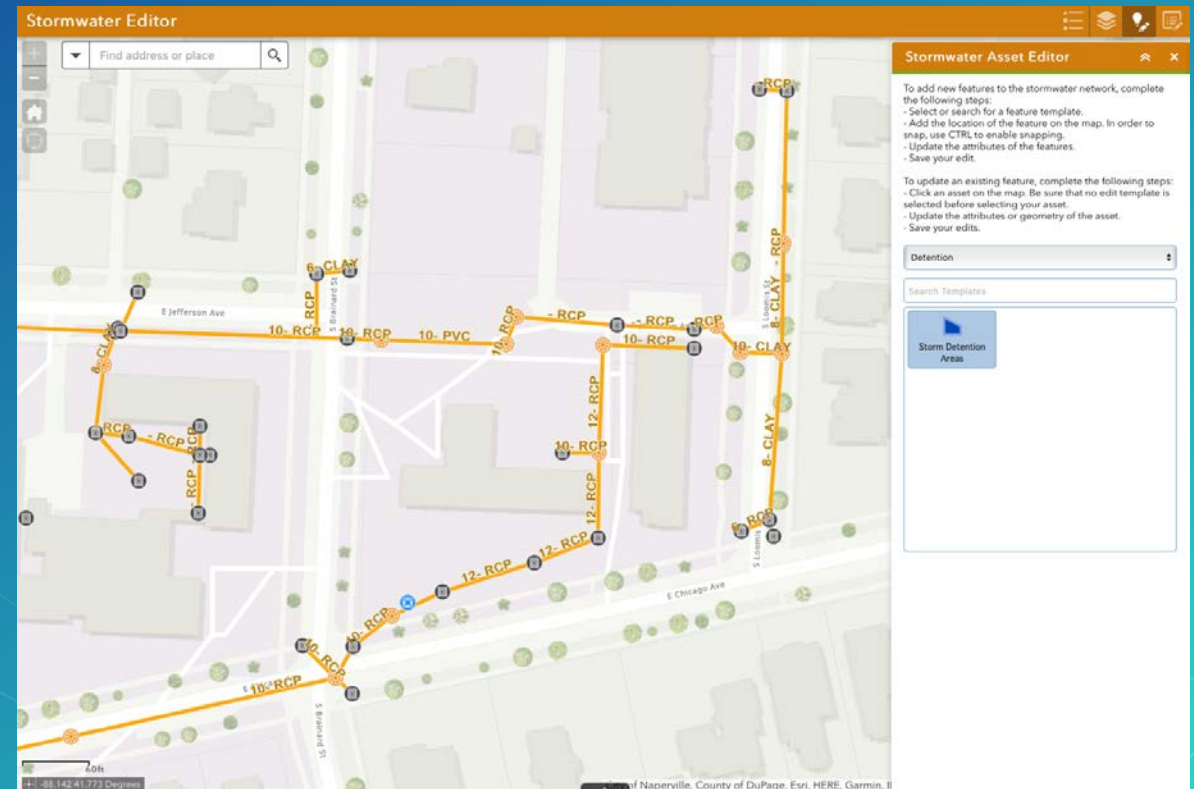
- Includes configurations for:
 - Best Management Practices (BMPs)
 - Culverts
 - Inlets
 - Manholes
 - Open Channels
 - Outfalls



Stormwater Viewer and Editor

Deploys Set of Maps and Apps for Viewing and Editing Stormwater Assets and BMPS in a browser or mobile browser

- Includes Configurations For:
 - Web applications
 - Stormwater Viewer
 - Stormwater Editor
 - Mobile web applications
 - Stormwater Mobile Viewer
 - Stormwater Mobile Editor
 - Survey123
 - Stormwater Map Change Request



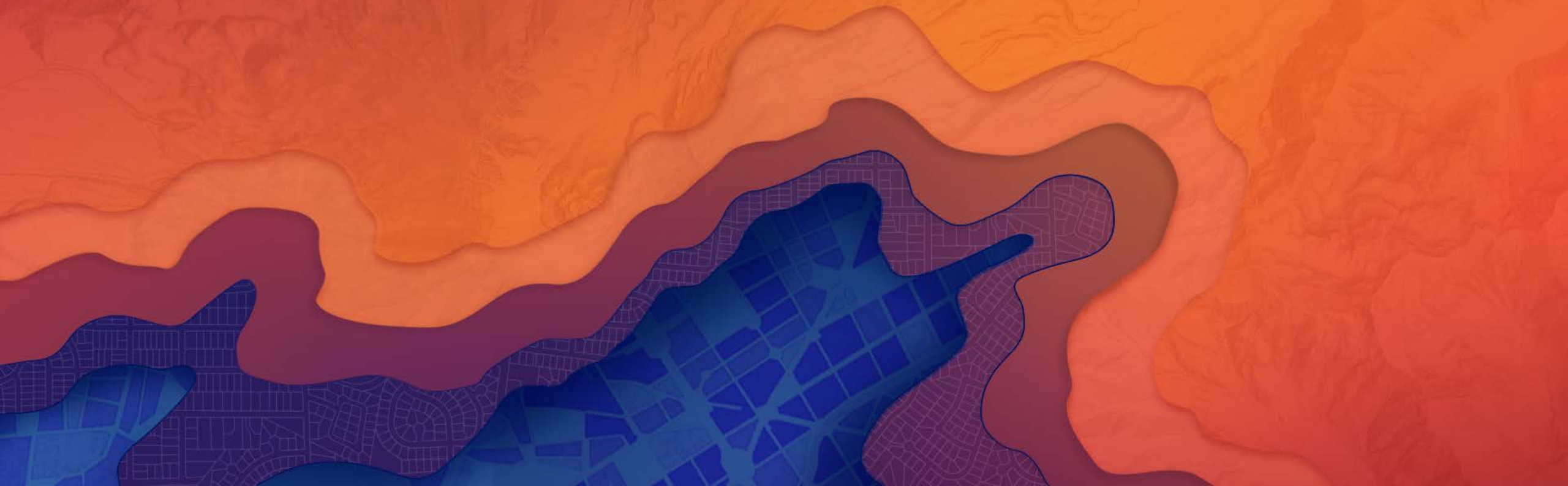
Under the Hood of the New Stormwater Solutions

- A feature layer for each asset type including:
 - The asset layer
 - A 1:m relationship to either an asset specific inspection table or a generic inspection table
- No more “mega services” for the stormwater network that include all assets
 - Was too easy to break your maps and apps
- Easier for you to use multiple ArcGIS Apps
 - Web, Collector & Survey123
- Simple to deploy using the ArcGIS Deployment Tool
- Results in a more modular deployment
- Plan to update Water Distribution and Sewer Solutions to use same approach by end of year

Other Notable Changes

- A new geoprocessing process for Utility Isolation Trace
- Redesign of the abandon and un-abandon tools in Water Utility Network Editing and Analysis
- Capital Improvement Planning can use a geodesic length calculation

Demonstration



Plans

- Cost Analysis Widget for Web AppBuilder
- Under the hood updates to Water Distribution and Sewer Solutions
- Add additional Solutions to the ArcGIS Solutions Deployment Tool
- Utility Network Asset Packages:
 - Water
 - Sewer
 - Stormwater
- Update Solutions to support the Utility Network

Want more information?

- Explore solutions.arcgis.com
- Visit us in the UC Expo Utility Neighborhood



esri

THE
SCIENCE
OF
WHERE