

**national river recreation
database
nationalriversproject.com**

july 19, 2015
risa shimoda, marina j. metes
river management society

How many good canoeing streams
are near where I'll be moving next year?

Are they included in the
'water trails' I hear about?



Maps and GIS Mapping Files - Wild and Scenic Rivers

www.rivers.gov/mapping-gis.php ▾

This page contains maps for the National **Wild and Scenic Rivers** System. Here, you ... Q: Does the GIS data include the recent (April 2009) designations? Yes.

Rivers: Nationwide Rivers Inventory - National Park Service

www.nps.gov/ncrc/programs/rtca/nri/ ▾ U.S. National Park Service ▾

Aug 19, 2011 - Download NRI GIS Data. Alaska NRI GIS ... UPDATED OR NRI Data - Puerto Rico ... Potential Classification | **Wild and Scenic Rivers** System

National Cadastral Data - U.S. Fish and Wildlife Service

www.fws.gov/.../Data/CadastralID... ▾ United States Fish and Wildlife Service

The intended application of these data layers is as a cadastral framework for ... as Wilderness and **Wild & Scenic Rivers**, that occur on USFWS managed land.

[PDF] Wild and Scenic Rivers Suitability Report - Bureau of Land Management

www.blm.gov/.../BLM_CFO_... ▾ United States Bureau of Land Management

Nov 13, 2013 - eligibility phase of a **Wild and Scenic River** evaluation as part of the resource 3 Suitability Criteria-Based Data and Determinations .

[PDF] Wild and Scenic River Spatial Data Standard Revision

www.blm.gov/.../ib-or-2013-... ▾ United States Bureau of Land Management

Apr 30, 2013 - (OR/WA) spatial data standard for **Wild and Scenic Rivers** (WSR) data standard defines how this type of data is to be captured in a ...

IM No. UT 2009-033 - Wild and Scenic River GIS Data ...

www.blm.gov/.../im_no_ut_... ▾ United States Bureau of Land Management

Mar 4, 2011 - Purpose: The purpose of this Instruction Memorandum (IM) is to evidence for updating Geographic Information System (GIS) data

A thought bubble with a black outline and a white interior, containing the text "How many designated 'Wild' river miles are in the Northeast?". The bubble is connected to a woman's head by three smaller circles of decreasing size.



A photograph showing three people standing on a rocky bank looking at a river with rapids. The water is clear and greenish, with white foam from the rapids. The people are wearing blue clothing. The word "vision." is overlaid in blue text at the top of the image.

vision.

*Resource that provides comprehensive
river recreation and management
information useful to resource
managers and interested publics.*



Searchable attributes.

River Access Sites	River Trips	
Site Name	Section Name	Trip Length
Rive Name	River Name	Management
Access Site Management	Upstream & Downstream Points	Wild and Scenic
Parking	State 1/2	Whitewater
Access Type	Description	Water Trail
River Mile	Section ID	Link to AW
Put-in / Take-out	Regulations	Link to website
Fee	Fishing	
Restrooms	Camping	
Restrictions	Difficulty	
Emergency Access	Outliers in Difficulty	
Observation Area	Permit Information	
Link to website	Miles	

create unique IDs...

Create river segment 'line events' using the Upstream access point and Downstream access point with the HEM (Hydrography Event Management) tool.

- ▶ Link points and segments with descriptive attributes to the NHD
- ▶ Connect tables to store info like the source of imported data, date of creation, link to management plan.

and unique segments.

NRRD descriptive attributes are linked to the NHD via a unique Permanent ID.

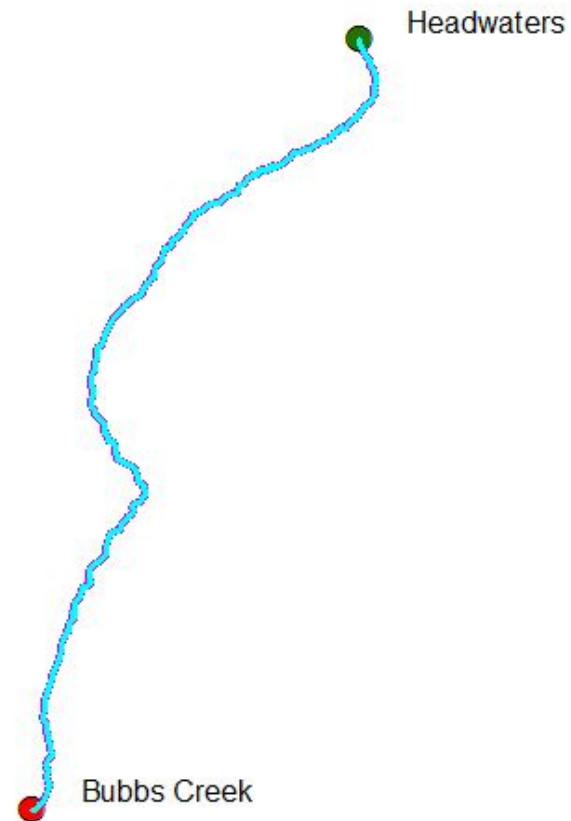
Identify

Identify from: <Top-most layer>

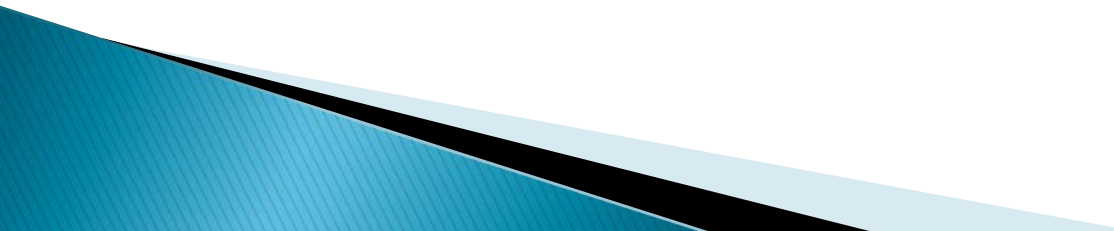
Location: -13,194,318.671 4,427,206.083 Meters

Field	Value
Shape	Polyline
Permanent_Identifier	{A1DE33DA-EA31-4FAB-A386-2206FC49004D}
FReachCode	18030010000163
TReachCode	18030010000127
FMeasure	66.03069
TMeasure	4.08081
GNIS River Name	South Fork Kings River
Section Name	Kings South Fork
State	CA
State 2	<null>
Description of Upstream Point	Headwaters
Description of Downstream Point	Bubbs Creek
Narrative Description	Class IV run through Kings Canyon National Park. Hiking require
Regulations	River closed past Bubbs Creek. Wilderness permits required for
Is Fishing Allowed	Yes
Is Camping Allowed	Yes
Special Permit Required	No
Link to Permit Information	http://www.nps.gov/seki/playourvisit/wilderness_permits.h
Trip Length	18
Trip Length	Multiday

Identified 1 feature



invite. translate...

- ▶ Invite data partners with geodatabases to join the fun!
 - ▶ Translate / map to NRRD standard with NHD *HEM tool* and ArcGIS *Append tool*: save for updates
 - ▶ Create a “Section ID” for access points and river sections
 - ▶ Conduct QA/QC
- 

NRRD Data Donation

Data
Partner

NRRD

- Import data
- Match to standard

HEM: Create Line Events

QA/QC

Join NHD attributes
from river segments
to access points

Final line and point
database



...translate.

Mapping attributes to NRRD standard with Append tool:

Data Partner							
Unique ID	State	Ownership	Name	Put-in	Takeout	Reach Leader	Hazards
ABC-001	NJ	City	Joe's Park	Y	N		
ABC-002	NJ	County	Maurice Marina	Y	Y		
NRRD Standard							
Unique ID	State	Managing Agency	Name	Upstream Access	Downstream Access	Wild & Scenic	
ABC-001	NJ	City	Joe's Park	Y	N	<null>	
ABC-002	NJ	County	Maurice Marina	Y	Y	<null>	

test progressively less familiar data.

- ▶ Data standard developed
- ▶ ‘Internal’ data – National Park Service Wild and Scenic Rivers, Oregon BLM rivers
- ▶ University of Washington MS GIS Students
- ▶ Partners
 - State of Tennessee
 - Minnesota DNR
 - Bridger–Teton National Forest
- ▶ New Relationships (need to be dialed)

create a data collaborative.

- ▶ Donors must have an incentive in order to:
 - translate (Append),
 - QA/QC,
 - upload and ...
 - update 'later'
- ▶ Are there models of crowd sourcing where donors commit to the integrity of the whole and a multi-year participation?
- ▶ Co-op: Donors kick into an escrow that offers mini-grants or awards annually (?!#\$?)

www.nationalriversproject.com

- ▶ ‘Gateway’ that links to authoritative sites
- ▶ Acknowledges authoritative vs. other contributed/crowd-sourced data
- ▶ Searchable for lay visitors by key attributes
- ▶ A place to shop for river experiences:
 - Water Trails (big assembly effort)
 - Whitewater Rivers (American Whitewater)
 - Wild and Scenic Rivers (rivers.gov web service)



Wild & Scenic Rivers

EXPLORE WILD & SCENIC RIVERS

Brought to you by a network of partners who study, protect and manage rivers in the U.S. that are available for you to visit and love. The National River Recreation Database provides comprehensive river recreation and management information useful to both resource managers and interested publics.

Explore a Featured

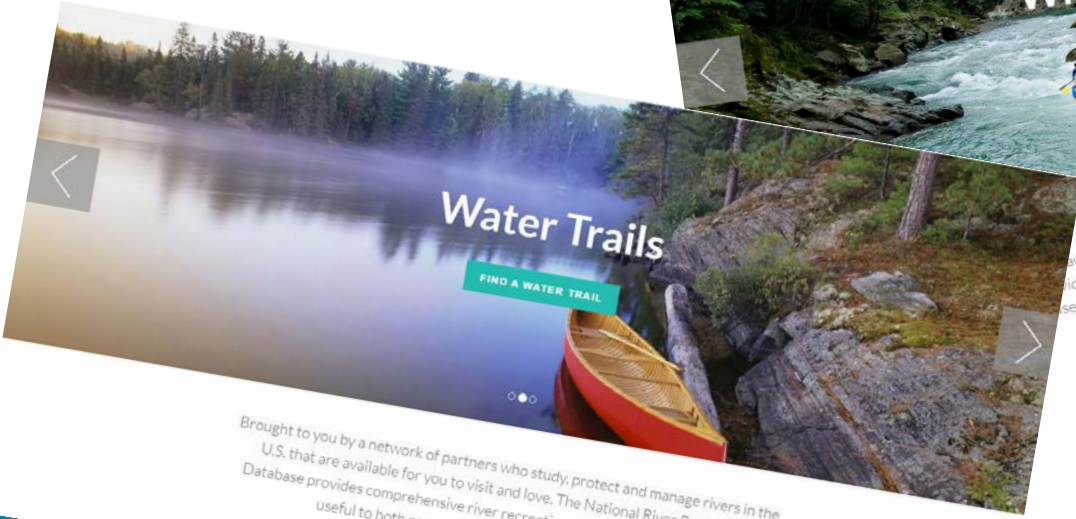


Whitewater Rivers

SEARCH FOR WHITEWATER

a network of partners who study, protect and manage rivers in the U.S. that are available for you to visit and love. The National River Recreation Database provides comprehensive river recreation and management information useful to both resource managers and interested publics.

Explore a Featured River

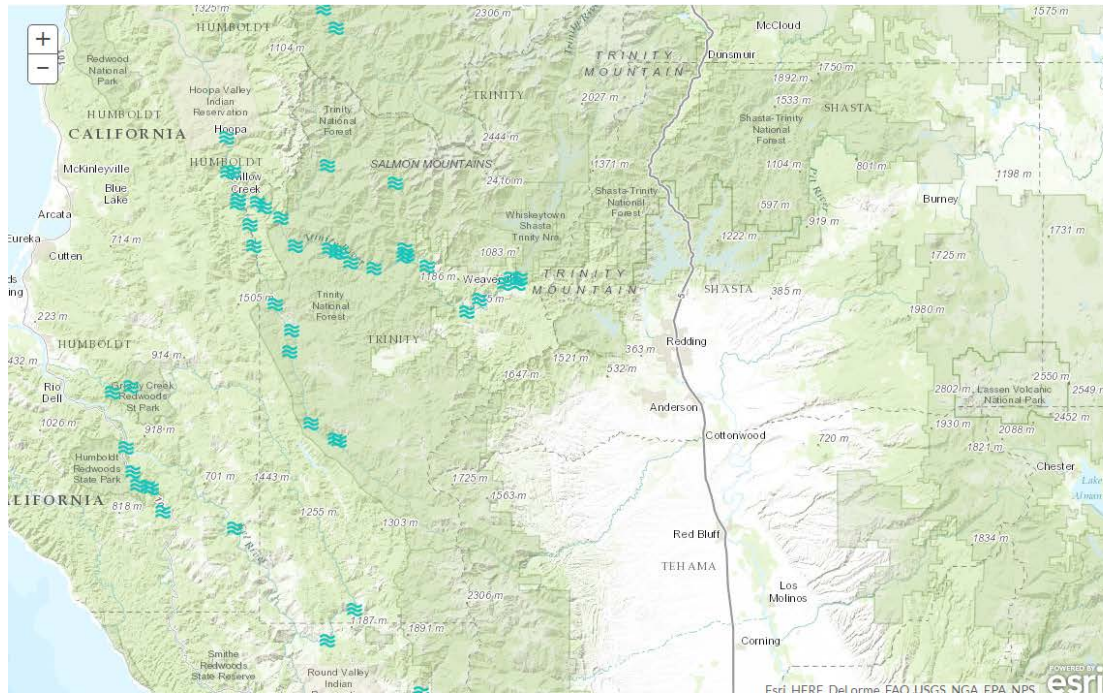


Water Trails

FIND A WATER TRAIL

Brought to you by a network of partners who study, protect and manage rivers in the U.S. that are available for you to visit and love. The National River Recreation Database provides comprehensive river recreation and management information useful to both resource managers and interested publics.

Explore a Featured River



9 Results



[Bruneau, Idaho](#)

Length: 39 miles
Agency: BLM



[Owyhee, Oregon](#)

Length: 120 miles
Agency: BLM



Data Partners



esri web app

National River Recreation Database River Management Society World

Layer List

Operational Layers

- River Access Sites
 - Boat Ramp
 - Boat-In Only
 - Carry-In
 - Fly-in
 - Emergency Access Only
- Campgrounds
- River Access Sites
- River Trips
- Water Trail
- Wild and Scenic
- World Hydro Reference Overlay

OBJECTID	Access Site Name	Access Site Management 2	River Left or River Right	Access Type	Available Parking	River Mile	Used for Put-in	Used for Take-out	Fee Required	Restrictions	Website Link	Emergency Route Site	Area			
1	Dryden Crossing		River Left	Carry-In	Overnight Parking		No	Yes	No	should be obtained by calling Jon Tom Lawrence at	http://www.np	No	No	Rio Grande	No	TX

AMERICAN AW WHITEWATER



U.S. DEPARTMENT OF THE INTERIOR BUREAU OF LAND MANAGEMENT



National BLM > OR/WA > Recreation > Rogue River



Oregon

What We Do

Visit Us

Information Center

About BLM

Jobs

Land Records

Laws, Regulations,
Policies

Newsroom

Online Services

Photo Library

Procurement

Maps and Data

Northwest Passage

Get Involved

The Rogue River

[Medford District](#) | [Wild Rogue](#) | [Explore!](#) | [Boating](#) | [Information](#) | [About Us](#)

The Rogue River is located in southwestern Oregon and flows 215 miles from Crater Lake to the Pacific Ocean. The 84 mile, Congressionally designated "National Wild and Scenic" portion of the Rogue begins 7 miles west of Grants Pass and ends 11 miles east of Gold Beach.

The Rogue was one of the original eight rivers included in the [Wild and Scenic Rivers Act of 1968](#). The Rogue National Wild and Scenic River is surrounded by forested mountains and rugged boulder and rock-lined banks. Check out the [Rogue River Float Guide](#) (PDF) for more information on the Wild and Scenic Rogue River. See also the [Wild Rogue Wilderness Area](#) page.

Steelhead and salmon fishery, challenging whitewater, and extraordinary wildlife viewing opportunities have made the Rogue a national treasure. Black bear, river otter, black-tail deer, bald eagles, osprey, Chinook salmon, great blue heron, water ouzel, and Canada geese are common wildlife seen along the Rogue River. Popular activities include: whitewater rafting, fishing, jet boat tours, scenic driving, hiking, picnicking, and sunbathing.

National Landscape Conservation System

NATIONAL CONSERVATION LANDS



[Home](#)

[About](#)

[Our Work](#)

[The Watershed](#)

[Volunteer](#)

[Take Action](#)

[Special Events](#)

[Publications](#)

Contact Us

Address

Huron River Watershed Council
1100 N. Main, Suite 210
Ann Arbor, MI 48104

Sign up for email updates:

Email Address:





partners.

National
Hydrography
Dataset



esri



RMS Website: www.river-management.org

Risa Shimoda: executivedirector@river-management.org

Marina Metes: marmet1@umbc.edu