



Mining UC Guide

Your guide to mining related activities in the conference! We hope it is useful in helping you navigate the virtual platform.

Plenary Sessions

Monday, July 12 | 8:30 AM–12:00 PM PDT

Tuesday, July 13 | 8:30 AM–10:00 AM PDT

Included:

- Special Interest Group (SIG) Session
- User Presentations
- Technical Sessions
- Virtual Expo
- Things To Do

Virtual Info Desk

If you have any general questions during the event, please visit the Virtual Info Desk, located in the main navigation of the event platform.



Special Interest Group

The Esri Mining community is growing, please come join the Mining User Group (MUG) to get an update on activities, progress and resources, adding a bit more structure to the MUG, and ways in which the community can interact to discuss specific technologies and workflows, through an interactive Q&A.

- Introduction | Darin Bryce, Esri, Chris Franks, Freeport McMoRan
- Mining User Group Overview
- New Challenges and Growth
- Resources Review – Web pages, Hub Sites and Esri Community Ideas/Discussion Forums
- Panel Discussion – With a number of established MUG Community Members
- Open Discussion – On trends, challenges, technology and the future - MUG Community Members

Thursday, July 15, 9:15 - 10:15 AM (PDT)

Panelists

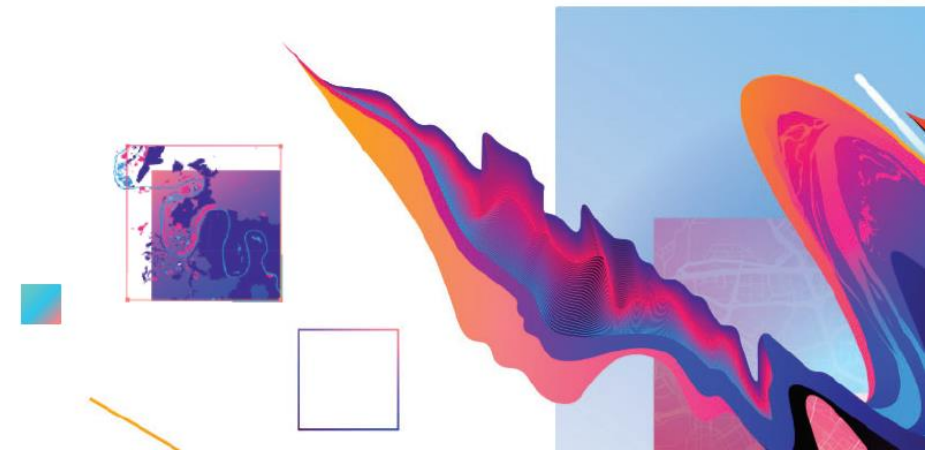
Darin Bryce, Esri
Matt Ballard, Esri
Chris Franks, Freeport
Mike Kelley, Teck Resources
Andrew McCulloch, Oz Minerals
Karl Warschau, BHP

Pieter Mostert, AngloAmerican
Roger Bannister, Covia Holdings Corp

Additional SIGs of interest

Thursday, July 15

6:45 AM PDT	Young Professionals Network
8:00 AM PDT	Pipeline
9:15 AM PDT	Natural Resources and Environment
1:00 PM PDT	Sustainable Development Goals
1:00 PM PDT	Corporate Social Responsibility
1:00 PM PDT	Petroleum User Group (PUG)
3:30 PM PDT	Renewable Energy





User Presentations

ON DEMAND SESSIONS

Available starting Sunday, July 11 at 9:00am PDT

Prioritization of Site Selection for Subsidence Mitigation of Abandoned Mines

The world has begun implementing programs to manage abandoned mines and mitigate subsidence. Historical records, risk assessment, jurisdiction policy, and geological investigations are all critical components to site priority. The study area is two counties in Wyoming spanning the years 2017-2020. This research hypothesized a hierarchical criteria for site prioritization and used GIS to visualize data in an effort to simplify the complex human deciding factors caused by abandoned mines.

Harry Plendl – *Brierley Associates*

Exploration Workflow with Discover for ArcGIS Pro

Wendi will take the audience through some of the business problems he has solved using ArcGIS Pro. Specifically around sectional representations of drilling program's and the ingestion of data from various mining software products to display in 3D and in section.

John Shippick – *Datamine*

Wendi Adrian – *Mederka Copper*

Search for these great user presentations from the mining community using the filtered search capabilities on the agenda and in the event platform when it's live. Be sure to explore the other dynamic presentations from the broader Esri community as well.

Using Esri Drone2Map to Create Orthomosaics/3D Datasets for Mine Mitigation

Brierley Associates uses ArcGIS Drone2Map as a tool for image processing including the production of orthomosaic datasets and 3D rasters from raw aerial imagery. What began as a way for Brierley to use snippets of aerial imagery for maps, figures, and presentations has morphed into a program that utilizes several drones, four FAA licensed drone pilots, a team of GIS Analysts, and a photogrammetrist turned GIS Analyst to produce high resolution orthorectified imagery for all of our GIS mapping.

Shane Zentner – *Brierley Associates*

Technical Sessions

Included are a small subset of highlighted tech sessions that are of relevance to the mining industry and of general interest. You're encouraged to explore the full list of offerings and add to your favorites and schedule during the event.

Monday, July 12	
Time	Session Title
12:30 PM	ArcGIS and Microsoft 365: Better Together
12:30 PM	ArcGIS Field Maps: An Introduction & What's New
12:30 PM	ArcGIS Platform: A Developer's Introduction
12:30 PM	ArcGIS Spatial Analyst: Suitability Modeler
12:30 PM	Getting Started with Imagery
12:30 PM	Living Atlas: An Introduction
12:30 PM	Spatial Data Science in ArcGIS
1:45 PM	ArcGIS API for JavaScript: An Introduction
1:45 PM	ArcGIS Enterprise: What's New
1:45 PM	ArcGIS Field Maps: Migrating to Field Maps
1:45 PM	ArcGIS Image for ArcGIS Online: An Introduction
1:45 PM	ArcGIS Pro: The Road Ahead
3:00 PM	3D Across ArcGIS
3:00 PM	ArcGIS Enterprise on Kubernetes: An Introduction for Administrators
3:00 PM	Living Atlas: Livefeeds Maps and Workflows for Disaster Response
3:00 PM	ArcGIS Enterprise: Deployment Options
3:00 PM	ArcGIS Experience Builder: An Introduction
3:00 PM	ArcGIS Image Analyst: An Introduction
3:00 PM	ArcGIS Survey123: An Introduction and What's New
3:00 PM	ArcGIS: Python Overview

Tuesday, July 13	
Time	Session Title
7:15 AM	ArcGIS Hub: An Introduction
7:15 AM	ArcGIS QuickCapture: An Introduction and What's New
7:15 AM	ArcGIS Enterprise: The Road Ahead
7:15 AM	ArcGIS Experience Builder: Designing Apps with Style and Layout
7:15 AM	ArcGIS Image Server: Image Management and Analysis at Scale
7:15 AM	ArcGIS Velocity: An Introduction
11:45 AM	ArcGIS Survey123: Working with Online Surveys
11:45 AM	ArcGIS Enterprise: Q&A with the Product Teams
11:45 AM	ArcGIS Imagery: What's New
11:45 AM	ArcGIS Online: The New Map Viewer
11:45 AM	Living Atlas: Imagery and Elevation
1:00 PM	ArcGIS Enterprise: Designing Sites and Pages
1:00 PM	ArcGIS Mission: An Introduction & What's New
1:00 PM	ArcGIS Online: The Road Ahead
1:00 PM	ArcGIS Pro: Migrating from ArcMap
2:15 PM	Living Atlas: Environmental Content, Mapping, and Analysis Workflows
2:15 PM	ArcGIS Field Maps: Data Collection & Inspection Workflows
2:15 PM	ArcGIS Pro: 3D Analysis, an Overview
2:15 PM	ArcGIS Pro: Q&A with the Product Teams

Technical Sessions

Included are a small subset of highlighted tech sessions that are of relevance to the mining industry and of general interest. You're encouraged to explore the full list of offerings and add to your favorites and schedule during the event.

Wednesday, July 14	
Time	Session Title
7:30 AM	ArcGIS Dashboards: Designing Effective Dashboards
7:30 AM	ArcGIS Field Maps: Creating and Using Smart Forms
7:30 AM	ArcGIS Velocity: Real-Time and Big Data Analytics
7:30 AM	ArcGIS: Introduction to Deep Learning for Imagery
7:30 AM	ArcGIS GeoAnalytics: Spatiotemporal Analysis of Big Vector Data
7:30 AM	ArcGIS StoryMaps: What's New and What's Coming
10:00 AM	ArcGIS Field Apps: The Road Ahead
10:00 AM	Living Atlas: Esri Basemaps and OpenStreet Map
10:00 AM	ArcGIS Pro: Taking Advantage of 3D
10:00 AM	Big Data, Spatial Analytics and Machine Learning: Workflows and Applications
10:00 AM	Drone Imagery: Creating Orthomosaics, DTMS and 3D Mesh
11:15 PM	ArcGIS Field Apps: Q&A with the Product Teams
11:15 PM	ArcGIS Monitor: Beyond the Basics
11:15 PM	ModelBuilder: Tips and Tricks
11:15 AM	ArcGIS 3D Analyst: Lidar Classification and Feature Extraction
11:15 AM	ArcGIS: Map Wizardry

Time	Session Title
12:30 PM	ArcGIS Field Maps: Location Tracking
12:30 PM	ArcGIS Survey123: Field Data Collection with Smart Forms
12:30 PM	ArcGIS Enterprise: Publishing Content and Services
12:30 PM	ArcGIS Hub: Managing and Collaborating with Your Community
12:30 PM	ArcGIS Pipeline Referencing: Introduction and What's New
12:30 PM	Enabling Conservation Planning with GIS: A Vision for 30 by 30
12:30 PM	Spatial Analysis & Data Science: The Road Ahead
1:45 PM	Deep Dive Into Deep Learning
1:45 PM	ArcGIS Field Maps: Taking Your Maps Offline
1:45 PM	ArcGIS Survey123: Advanced Smart Form Design
1:45 PM	Spatial Data Science: What's New in Time Series Analysis

EXPO

Included are a subset of featured partners and sponsors. Please check the [full List of Sponsors and Exhibitors](#).



V203

con terra is an Esri Platinum Partner, bringing ArcGIS expertise & business-critical solutions to customers for over 25 years. This year we spotlight our security & access control solution for ArcGIS: security.manager. But security.manager isn't just about security! By allowing admins to control access to data within a service, it helps optimize workflows by filtering content without having to publish multiple services for each group. So stop struggling & start sharing, with security.manager.



V172

GeoDecisions is an international consulting firm specializing in geospatial technology systems, cloud technology, and analytics for commercial, municipal, state, and federal government organizations. We offer a suite of SaaS and tailored solutions that equip decision-makers with the data, intelligence, and visual information critical to planning, logistics, public safety, emergency response, security, asset management, incident management, resource management, and mass notification.

CRITIGEN

V119

Critigen is a full-lifecycle spatial systems integrator driving business performance through spatial IT solutions. Critigen helps clients make spatial technologies "work" in organizations of all sizes, integrates spatial technologies with enterprise systems, and enables field users with mobile spatial solutions. With global reach, top-tier partnerships, and a full-lifecycle approach, Critigen delivers all components of a geospatial program: data collection, spatial processing, and analytics.



V144

SSP provides award-winning solutions to electric, gas, and water utilities; telecommunications providers; and pipeline operators across the globe. Our solutions are designed to help our customers meet their unique business challenges through a combination of deep technology expertise and unmatched familiarity with utility industry best practices.



V125

HERE Technologies moves people, businesses and cities forward by harnessing the power of location. We enable our customers to achieve better outcomes - from helping a city manage its infrastructure or a business optimize its assets to guiding drivers to their destination safely. To learn more about HERE, please visit www.here.com and <http://360.here.com>.



V104

VertiGIS builds powerful GIS software for the real world. It offers solutions and services that help utilities, land management, public sector, energy, telecommunications, and industry customers make valuable connections and the build solutions they need to solve their unique business challenges. The VertiGIS product portfolio, including Geocortex, VertiGIS Utilities, ProOffice and M4 Solutions, is used by thousands of customers and millions of end-users around the world.



V108

GeoComm serves local, regional, statewide, and military agencies nationwide, empowering us to execute our mission of helping save lives and protect property by delivering Public Safety Location Intelligence®: the right location data, on the right map, for the right people at the right time.



V174

Founded in 1991, GISinc provides Premier GIS Services to federal and state + local governments, as well as commercial clients. Using the science and technology of geography, GISinc integrates the spatial context to business information systems. GISinc helps customers leverage this intelligence to solve complex problems across the country and worldwide.

EXPO

Included are a subset of featured partners and sponsors. Please check the [full List of Sponsors and Exhibitors](#).

Organization	Booth
1Spatial Inc	V238
Airbus	V110
Amazon Web Services	V231
Association of American Geographers	V171
Bad Elf, LLC	V177
Blue Raster	V109
Carlson Software	V115
con terra GmbH	V203
Critigen	V119
DTN	V244
Eos Positioning Systems	V102
First American DataTree LLC	V274
GEO Jobe	V170
GeoComm	V108
GeoDecisions	V172
Geodesign - Penn State University	V120
GISinc	V174
HERE Technologies	V125
L3Harris Technologies	V153
Laser Technology, Inc.	V106
Leica Geosystems Inc.	V242
Magnolia River	V121
Maxar	V192
Microsoft Corporation	V270

Organization	Booth
NASA Earth Science	V220
National Audubon Society	V122
NatureServe	V127
NOAA	V193
Patrick Engineering	V175
Planet	V132
Pro-West & Associates	V114
RAMTeCH	V213
ROK Technologies	V133
Royal Society for the Protection of Birds	V128
Safe Software Inc	V160
Seequent	V249
Skytec LLC	V215
Spire Global	V200
SSP Innovations LLC	V144
Texas A&M University	V141
The Nature Conservancy	V240
The Sanborn Map Company	V246
The Trust for Public Land	V169
Trimble Inc	V103
Unacast	V267
University of Denver - GIS Master's Program	V159
Ursa Space Systems	V211
VertiGIS	V104
Woods Hole Research Center	V116

Map Gallery

See a featured list of maps from the 2021 UC Map Gallery, that you might find relevant to your broader industry and some that are of general interest. Be sure to explore the full offerings contributed from our user community around the world.

Map ID	Map Title	Organization	Industries
28972	Australian Tree Crop Map Dashboard	University of New England	Agriculture
29295	America's Red Rock Wilderness Act: Moving America Closer to 30x30	Southern Utah Wilderness Alliance	Conservation
28911	Seeing the Carbon for the Trees	The University of Tennessee at Chattanooga	Conservation
29148	Stream Drying Impacts on California's Anadromous Salmonids	University of California San Diego	Conservation
29689	Analysis of Spatiotemporal Change in Rescue Activities That Contribute to Response Teams Operation After an Earthquake	Yokohama National University	Emergency Management
29473	Land Emissions and Removals Navigator Tool: Estimating Community GHG Emissions from Land Use Change	Blue Raster LLC	Environment and Natural Resources
29089	Calgary's Glacial Water Sources Map	EN Creative	Environment and Natural Resources
28943	Geologic Map of the McDowell Mountains, Maricopa County, Arizona	McDowell Sonoran Land Conservancy	Environment and Natural Resources
29121	The Resources Driving Utah's Energy Economy	State of Utah	Environment and Natural Resources
29314	Analysis for Potential Grey Wolf Release Habitats in Colorado	Tufts University Data Lab	Environment and Natural Resources
25543	USDA Forest Service - Rocky Mountain Region - 117th Congressional Districts, Representatives and Forest Service Administered Lands	US Department of Agriculture	Environment and Natural Resources
28955	Sequoia National Park Trail Map and Guide	USC Spatial Sciences Institute	Environment and Natural Resources
29711	Use of UAS Imagery and Regression Tree Modeling to Calculate Fractional Shrub Cover for Greater Sage-Grouse Micro-Habitat	US Geological Survey	Environmental Management
29589	FSC GIS Portal	Blue Raster LLC	Forestry
25536	Southeastern Aggregate Production Map	Burgex, Inc.	Mining
29406	GravMagApp	CGG	Mining
29549	Nevada Active Mines and Energy Producers	Nevada Bureau of Mines and Geology	Mining
29654	Land Classification of Lahat Regency's Mining Activities	PT Sriwijaya Bangkit Energy	Mining
29380	Mine Opening Area Monitoring	PT. Ceria Nugraha Indotama	Mining
25379	Arctic Warming	Woodwell Climate Research Center	Research/Science Institutions
29521	New Mexico Uranium Mine Dashboard	NM Energy, Minerals and Natural Resources	State
28909	Is Domestic Migration Moving the United States Towards a Sustainable Energy Future?	County of San Bernardino	Sustainable Development

Things To Do



UC Virtual Run/Walk/Bike 2021

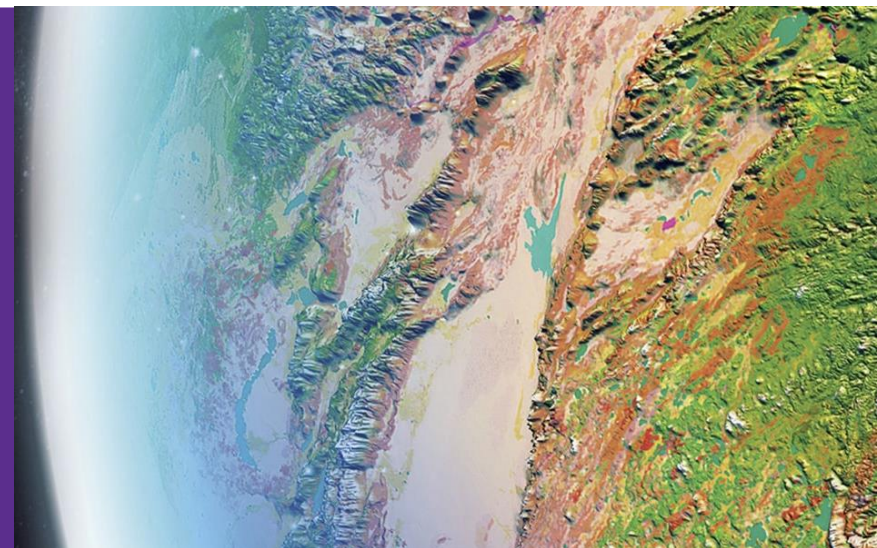
A fun and active way for you to get involved in this year's conference. Since we can't run together like we normally would, we are hosting a virtual event for participants of all abilities. You can run, walk, or bike as many times as you like between July 10 and July 18. Log your trips and help us reach our community goal to go around the world!

<https://uc-2021-running.hub.arcgis.com/>

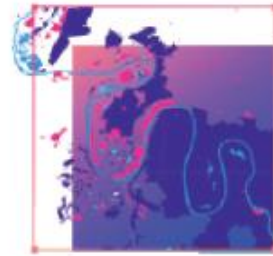
Esri Science Symposium

Meet Dr. Dawn Wright, chief scientist of Esri, and special guest Dr. Healy Hamilton, chief scientist of NatureServe, on July 15 for a virtual, interactive discussion. Explore climate change, sustainability, geodesign, and more. The symposium theme is Working together to serve science and society. The symposium features a Q&A session and opportunities to connect with other science-minded users via our Esri Community.

<https://www.esri.com/en-us/about/events/science-symposium/overview>



Esri Mining Team



Geoff Wade
Community Outreach
gwade@esri.com



Darin Bryce
Account Executive
dbryce@esri.com



Peter Will
Account Executive
pwill@esri.com



Matt Ballard
Natural Resources
Solution Engineer
mballard@esri.com



Sarah Powell
Natural Resources
Marketing Specialist
Sarah_powell@esri.com

Reach out to the Esri Mining staff during the conference by **chat** or **schedule a meeting**. Plus, stay connected with the Esri Mining Community all year long!

- Twitter: [@EsriMining](#) (use #EsriUC while attending the virtual UC)
- LinkedIn: Mining [MUG Online](#) group
- Esri's [Mining GeoNet Community](#)