



February Meeting

2/10/2021

AGENDA

1. Announcements
2. Esri Update
3. Workflow Manager Updates
4. Open Discussion

**** Please mute phones!! ****

ANNOUNCEMENTS

- GeoNet Updates
- LRS in AGOL

Esri Updates

Nathan Easley

Workflow Manager Updates

Michael Broadbent and Amit Hazra

Open Discussion

LRS Functionality in AGOL

Upcoming Meetings / Contacts

Wednesday March 10th, 1:30-3pm

Contact Info:

Erin Lesh erialesh@ncdot.gov

Patrick Whiteford pwhiteford@azdot.gov



**Product Team Update
RHUG meeting 2/10/21**

Nathan Easley

Capabilities currently under development

- **External System Integration**
 - Update external event configuration
 - Relocate Events
 - Export Network
- **Reverse Route**
- **Cartographic Realignment: Update measures when centerline geometry length changes**

Support Incidents/Defects

- **BUG-000135025** - Cartographic Realignment created of concurrent routes created extra vertices (As Designed)

Other Announcements

- **10.8.1/10.7.1 patch**
- **Holistic Testing at GIS-T**
- **Roads and Highways training course**



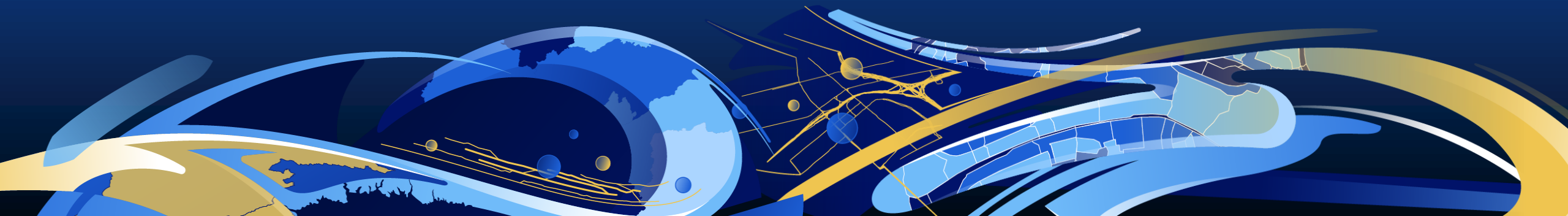
esri

THE
SCIENCE
OF
WHERE

ArcGIS Workflow Manager Server / Roads and Highways Pro

Amit Hazra

Michael Broadbent



Demonstration and Update Themes

- **Demo**

- Can you emulate existing common R&H-centric workflows using WMX Server?
- Can you take advantage of new enhanced features of WMX Server?
- Can you refine/simplify certain workflow-related activities in an LRS workflow?

- **Product Update**

- Current release updates
- Product development and future releases

Some Key Takeaways

- **WMX is still the “glue” that binds our Desktop and Server production LRS data management tools together**
- **Core LRS workflows are supported and many of the highly technical GIS administrative activities remain transparent to the technician**
- **Certain R&H activities may now be abstracted to steps without the need to understand the concept or open a client application (Rec/Post and Conflict Prevention)**
- **R&H and WMX is a fully service oriented solution taking advantage of the full suite of ArcGIS Enterprise (Data models, service-based versioning and editing, identity, web app integration, APIs)**
- **Simpler deployments / Huge performance gains over WMX Classic**

Workflow Manager Server Product Updates

- **Product Update**
 - **Current release updates**
 - **Product development and future releases**



esri®

THE
SCIENCE
OF
WHERE®

from Ryan Koschatzky to all attendees: 12:33 PM

<https://community.esri.com/t5/roads-and-highways-user-group/gh-p/roads-and-highways-user-group-rhug>

from nicole hanson to everyone: 12:40 PM

yes!! that'll be awesome!!!

from Patrick Whiteford to everyone: 12:41 PM

That is great news Nathan.

from Patrick Kemble to everyone: 12:41 PM

Nathan - awkward question - Can folks register for the holic testing outside of registering for GIS-T?

from Gerry(Caltrans) to everyone: 12:41 PM

Yes, that training will be very useful.

from Patrick Kemble to everyone: 12:43 PM

Ok, thanks Nathan.

from Michael Broadbent to everyone: 12:52 PM

Yep that's right. 100 to 500 times faster depending on the action

from Michael Broadbent to everyone: 12:56 PM

Yes, I'll demo the new changes :)

from Patrick Whiteford to everyone: 12:58 PM

Can you upload desktop workflows into the pro enviornment?

from Michael Broadbent to everyone: 12:59 PM

Yes, the web and pro steps work seamlessly together. This should be part of Amit's demo. Pro actually will connect to the Workflow Server directly

from Jim Mitchell to everyone: 1:05 PM

Will Workflow Manager still support "direct" database connections or ONLY feature services?

from Michael Broadbent to everyone: 1:10 PM

It currently only supports feature service in the new service architecture which is the format the network is delivered in Pro as well

from Sam Coldiron to everyone: 1:10 PM

Are we only seeing this behavior because WMX launched it or is this something that you can just open in Pro at any time?

from Sam Coldiron to everyone: 1:10 PM

**RCE in Pro

from Michael Broadbent to everyone: 1:10 PM

For event editor? This is a Workflow Manager feature

from Sam Coldiron to everyone: 1:11 PM

@Michael, thank you!

from Michael Broadbent to everyone: 1:11 PM

To open web apps/pages directly in Pro, not just limited to event editor

from Erin Lesh to everyone: 1:18 PM

Everyone is muted by default. If you would like to speak, please let me know and I can give you permission.

from Amit Hazra to everyone: 1:19 PM

Launching sites is URL parameter driven through Arcade expressions.

from Amit Hazra to everyone: 1:20 PM

For instance: 'https://esri-rhpro-

lrs.esri.com/INDOT_EventEditorPro/?config=config_LrsTeamAssets.json&version='+jobVersion(\$job,'Indot_ProLRS_DesktopEditing_Service')+'&extent='+jobLocation(\$job)

from Patrick Whiteford to everyone: 1:37 PM

One comment is to allow the area of interest integrate with R&H linear events. Since R&H doesn't have LRS enabled polygons.

from kyle to everyone: 1:42 PM

Wow

from Amit Hazra to everyone: 1:44 PM

With regard to Survey integration, we think there could be great use cases for HPMS sample review, roadway inventory inspection, and quality control workflows to name a few

from Jessica Fendos to everyone: 1:50 PM

Do you see jobs automation from Workflow Manager replace the traditional Windows Scheduled Tasks?

from nicole hanson to everyone: 1:51 PM

YES Patrick - good idea

from Jessica Fendos to everyone: 1:53 PM

Thanks. Do you need to have Workflow Manager open for automated jobs to run as scheduled?

from Jessica Fendos to everyone: 1:54 PM

Great. Thank you.

from Erin Lesh to everyone: 1:56 PM

Thanks so much Amit, Michael and Nathan - great stuff!

from Amit Hazra to everyone: 1:56 PM

And of course you can always review our GeoNet: <https://community.esri.com/t5/arcgis-workflow-manager/ct-p/arcgis-workflow-manager>

from Jessica Fendos to everyone: 1:58 PM

Thanks!