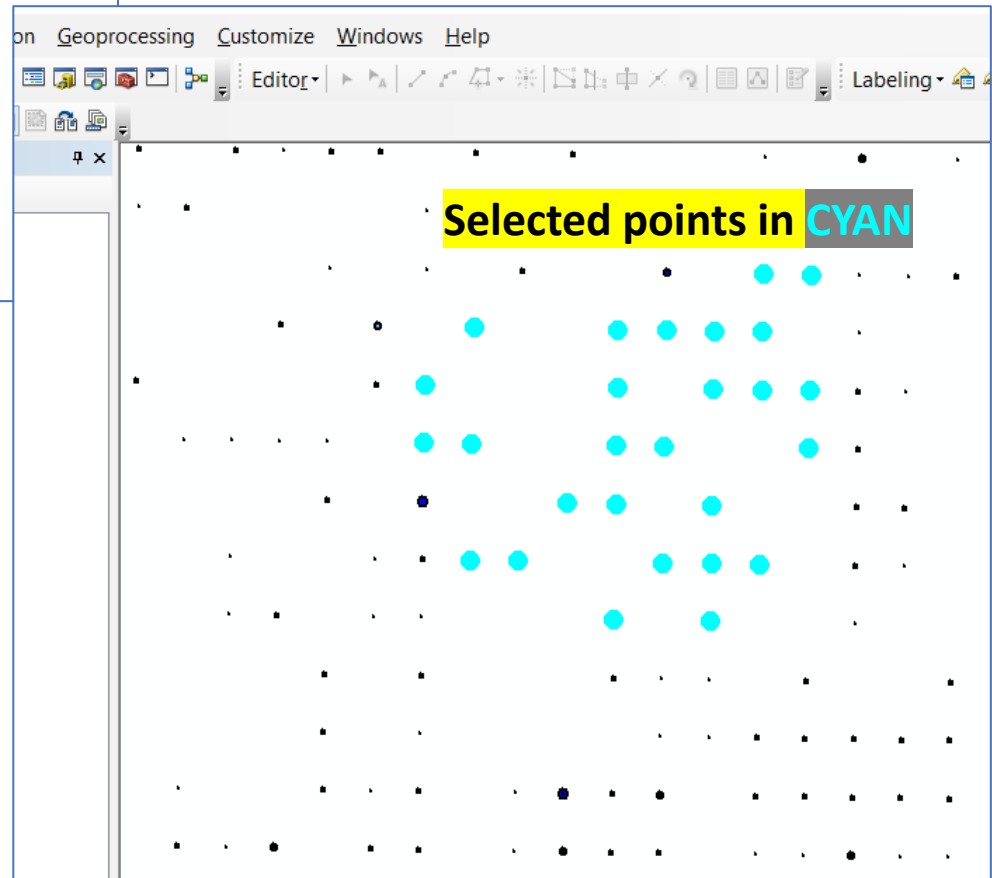


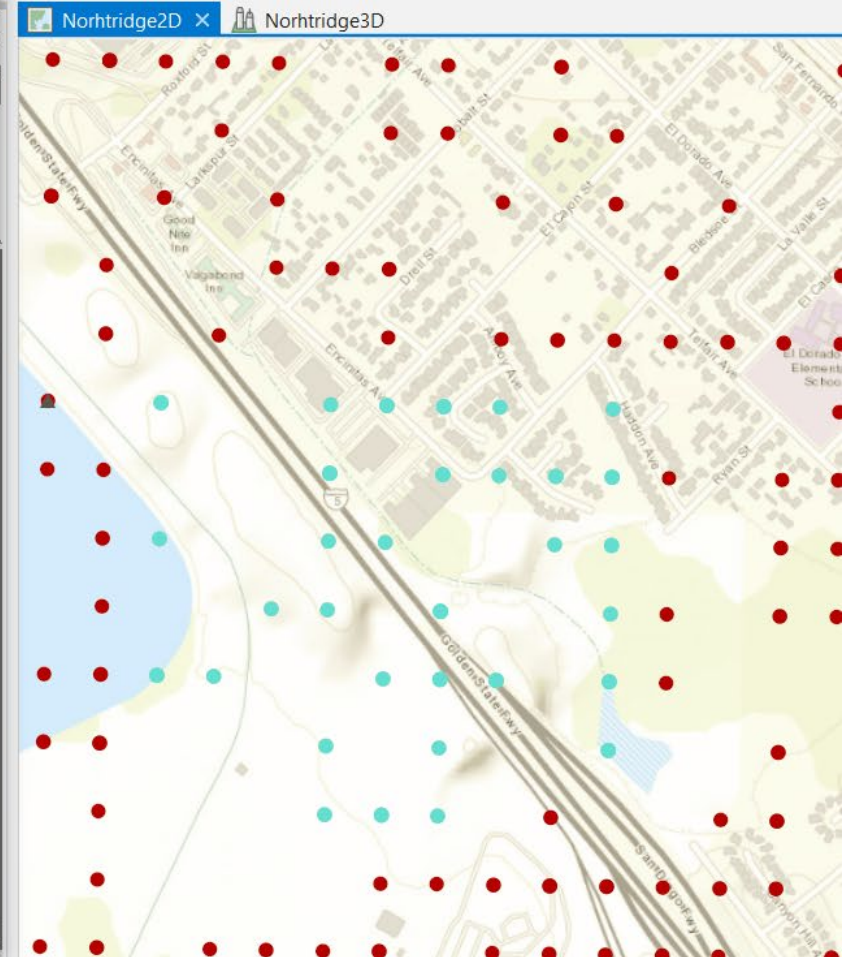
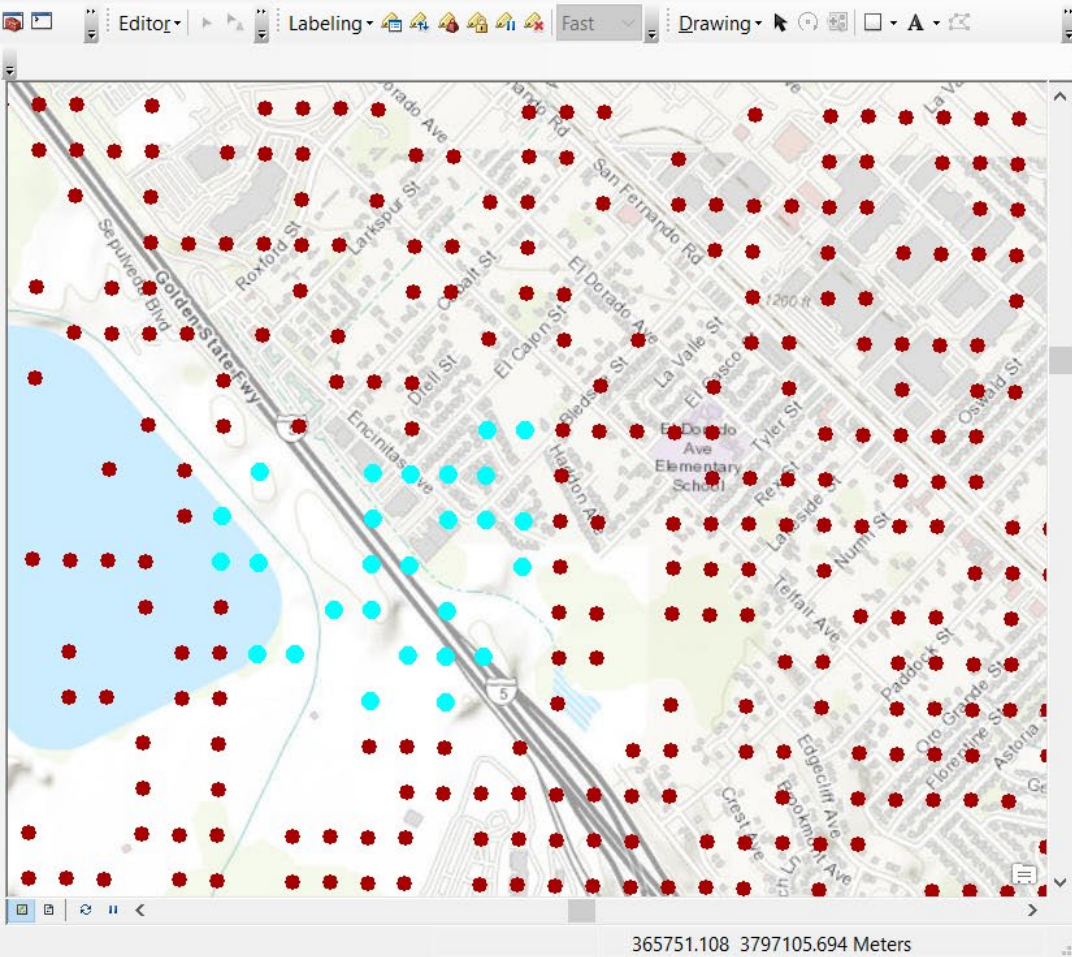
ArcMap 10.8.0.12790



Issue 1. AM selection much easier to see – b'c of “halo”

ArcMap

ArcPro

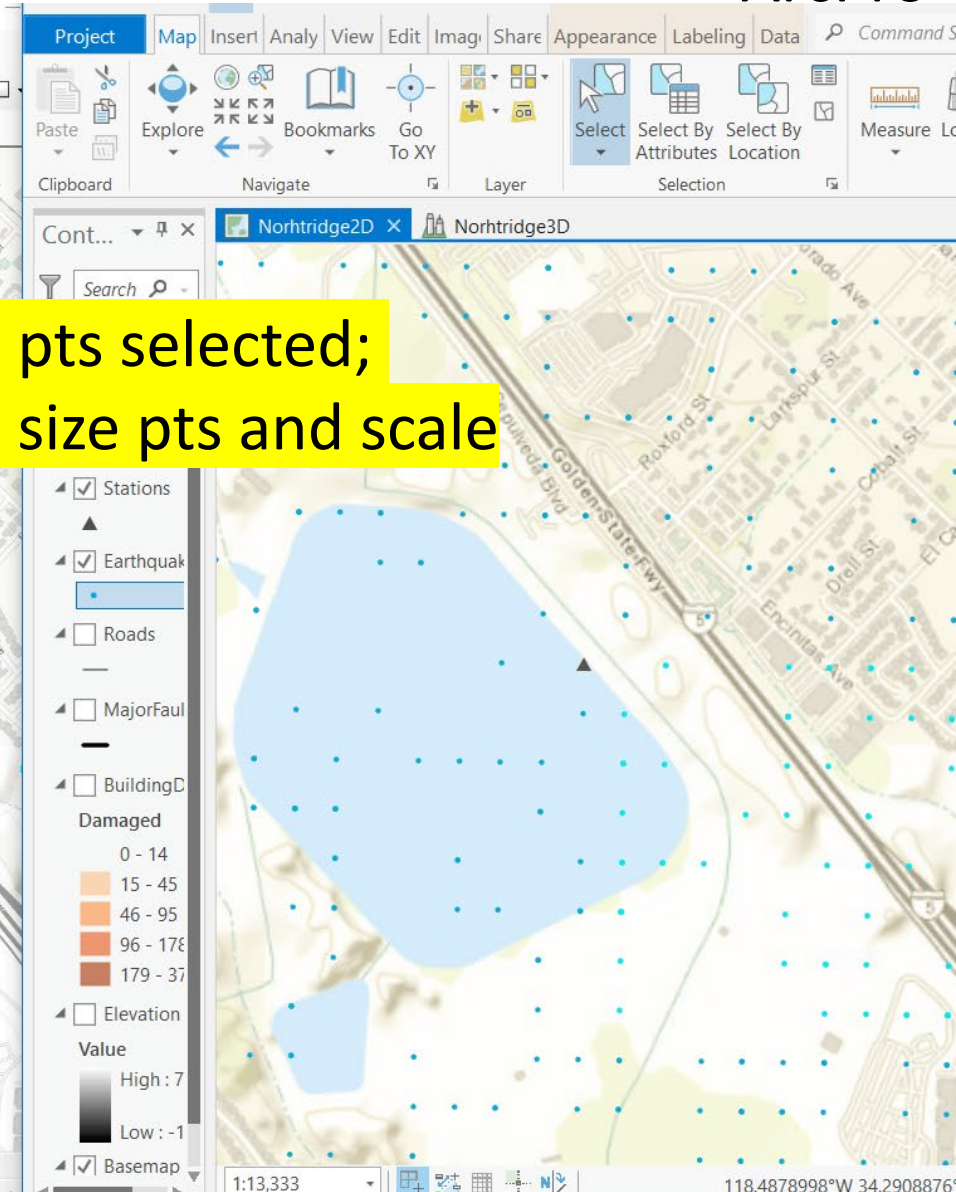
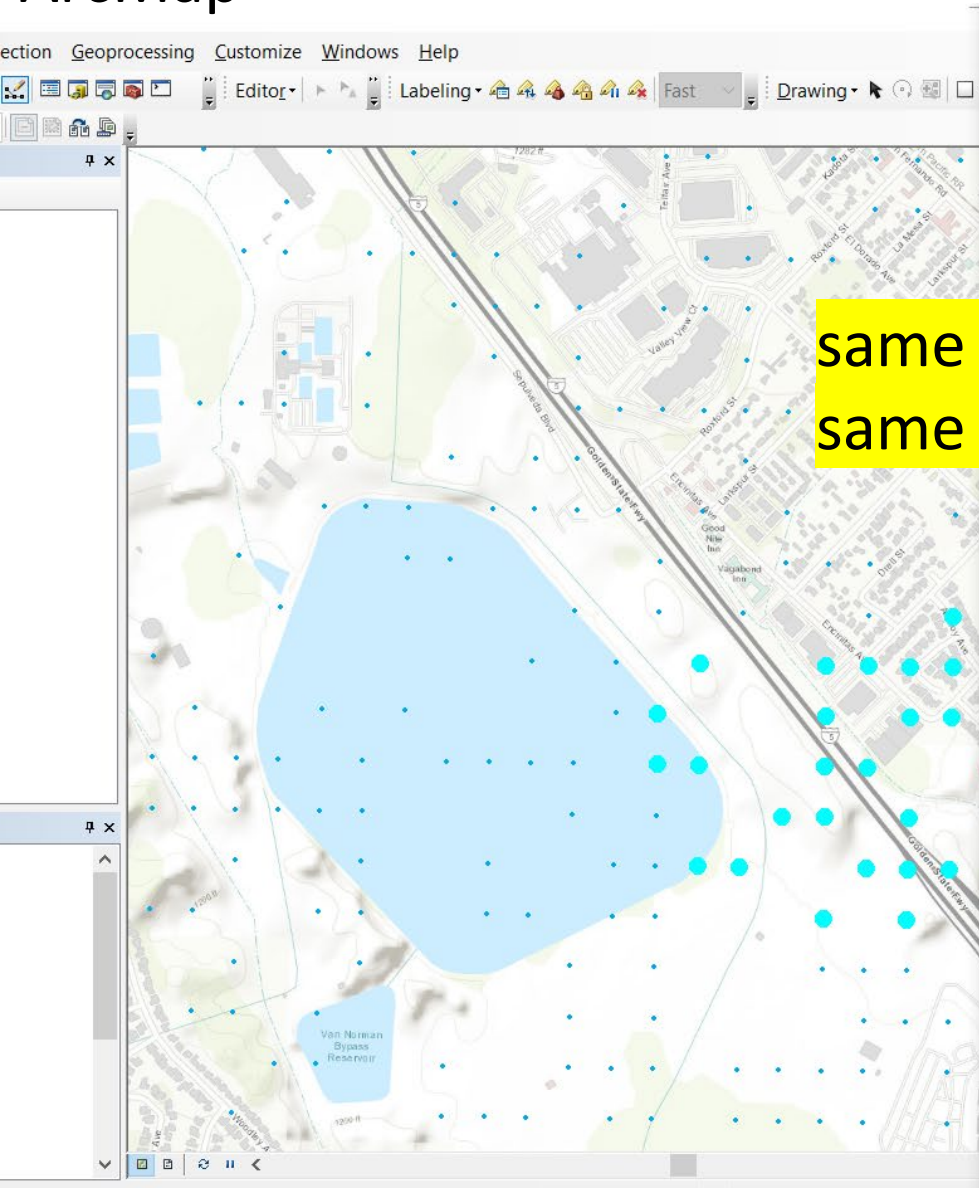


same pts selected;
same size pts and scale

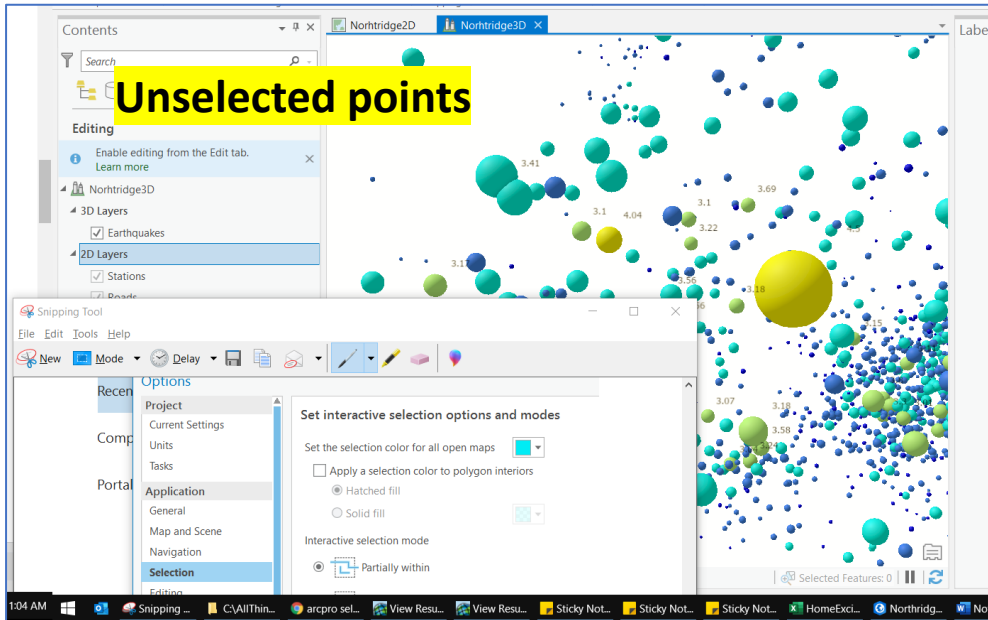
Issue 1. AM selection much easier to see – b'c of “halo”

ArcMap

ArcPro



same pts selected;
same size pts and scale



Issue 2. selection color does not match setting of selection color

Why is my selection showing as PINK when the selection color is 0/255/255?

ArcPro 2.8.3

