



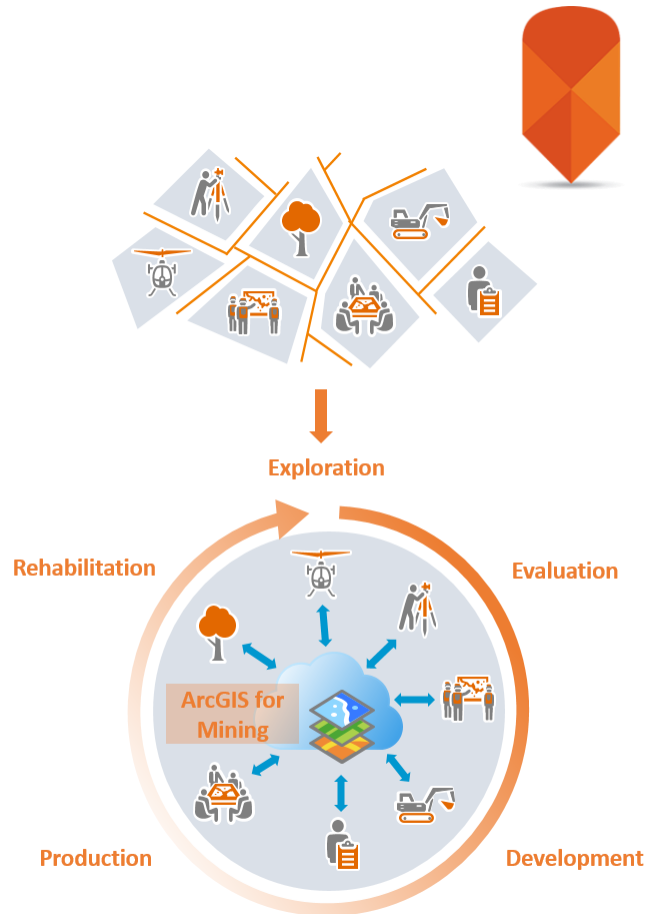
**Organisation:** Lonmin Platinum Mines **Location:** Marikana, South Africa

Location plays a key role within the Lonmin Mining operations which are located within the Bushveld Igneous Complex (BIC) in South Africa – an area which currently contributes nearly 80% of global Platinum production.

**What did they do?**

As is the case with most mining houses, many technologies and software’s are procured to aid with mine planning, surveying, scheduling and resource management. Due to the many software’s being utilised in the business units (environmental, survey, engineering, etc...) within the mining organisation, Lonmin found themselves in a situation whereby the different systems couldn’t communicate to provide a full “picture” of the mining operation and outputs. Lonmin approached Esri South Africa for professional advice on how to implement one platform that would remove data and business “silos” resulting in a fully integrated mining management system.

The project was delivered within the project timelines and budget to meet (and exceed) Lonmin’s expectations. The ArcGIS for Mining solution was successfully deployed to provide a platform for storing, discovering, analysing and sharing critical geospatial information to decision makers and knowledge workers across various business units. Esri South Africa leveraged the class-leading ArcGIS technology to deploy a scalable and self-manageable solution that allows for application enhancements and amendments as the mine evolves through its life cycle.



**Do I need this?**

Esri South Africa’s ArcGIS for Mining platform is aimed at addressing specific business problems such as mining plan compliance, slope stability analysis, geotechnical risk areas, production efficiency and planned vs. actual production, through its centralised Geodatabase, integration tools, sharing and analysis capabilities.



*“Our exec team is excited to see the GIS working with Lonmin data. We have shared some of the concepts and ideas with them and they are eager to see more”*

**Eduan Marais** - MRM Systems Manager