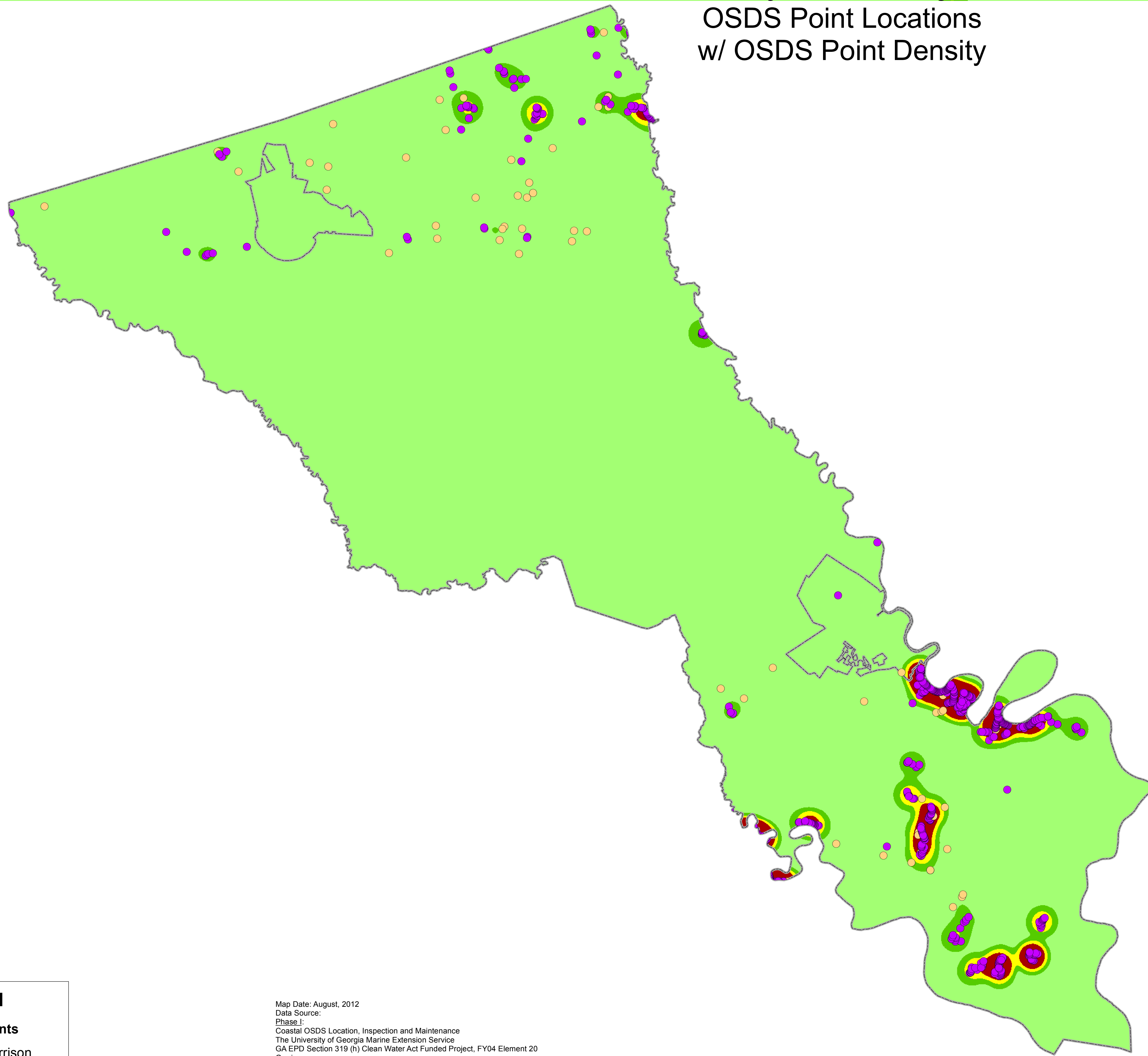


Bryan County

OSDS Point Locations w/ OSDS Point Density

OSDS Point Summary:

Location	Phase I	Garrison Total
Not within area of high OSDS density	185	53 238
Within area of high OSDS density	393	7 400



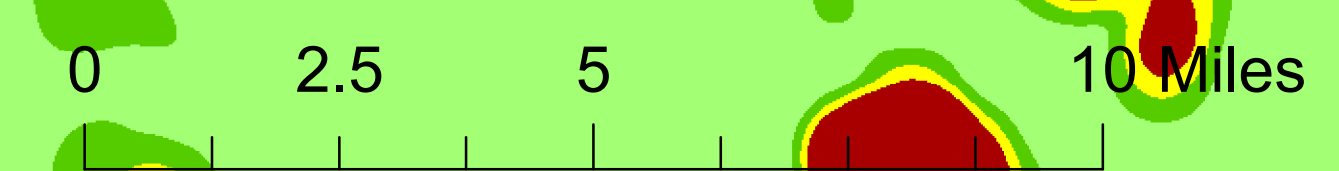
Legend

OSDS Points

- Garrison
- Phase I
- Municipalities

Map Date: August, 2012
 Data Source:
 Phase I:
 Coastal OSDS Location, Inspection and Maintenance
 The University of Georgia Marine Extension Service
 GA EPD Section 319 (h) Clean Water Act Funded Project, FY04 Element 20
 Garrison:
 Garrison Enterprises, Inc. "The Digital Health Department". Georgia Department of Public Health.
 Septic Inspections reports, January 1, 2009 - July 11, 2012.

* OSDS point density calculated using kernel density method, search radius of 3960 feet, and a 100 ft. cell size. OSDS point density symbolized using Standard Deviation data classification method (1 Standard Deviation).



  **MAREX**
 The University of Georgia Marine Extension Service

 **GEORGIA**
 DEPARTMENT OF NATURAL RESOURCES





COASTAL HEALTH DISTRICT
"protecting and advancing the public's health"



