

UC



# Get More from the Cloud with Esri Managed Cloud Services

Alec Walker



# Inspire





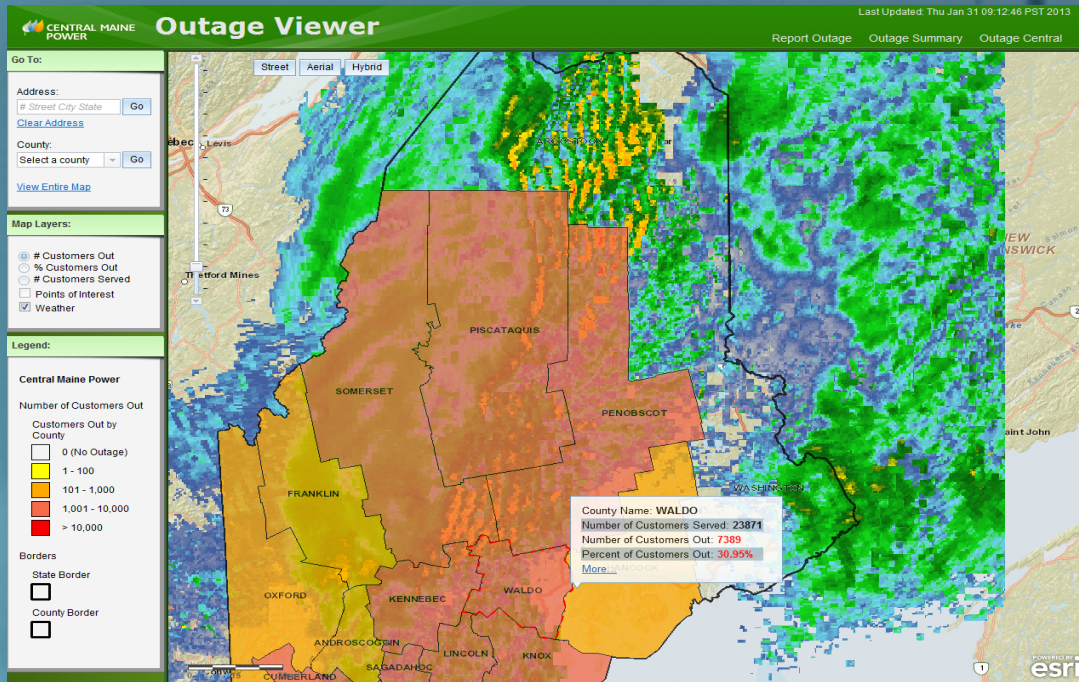
# Promises of the cloud





# Supporting variable usage

Maintaining system performance in the face of major events



Highly available, scalable systems

Supports day-to-day usage and major events

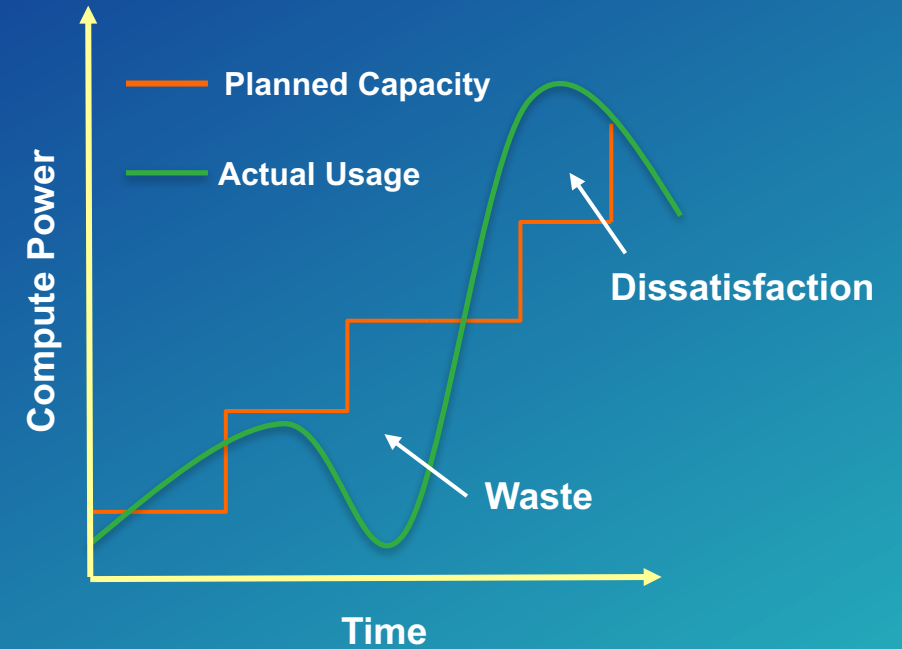
Frequent, automated data updates



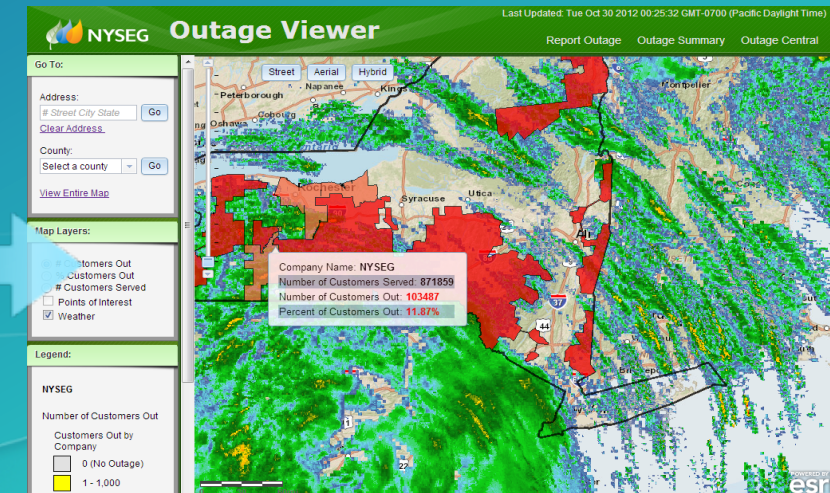
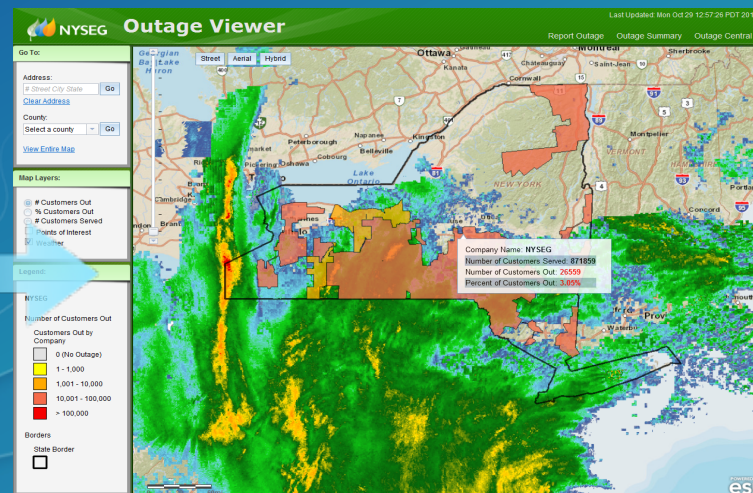
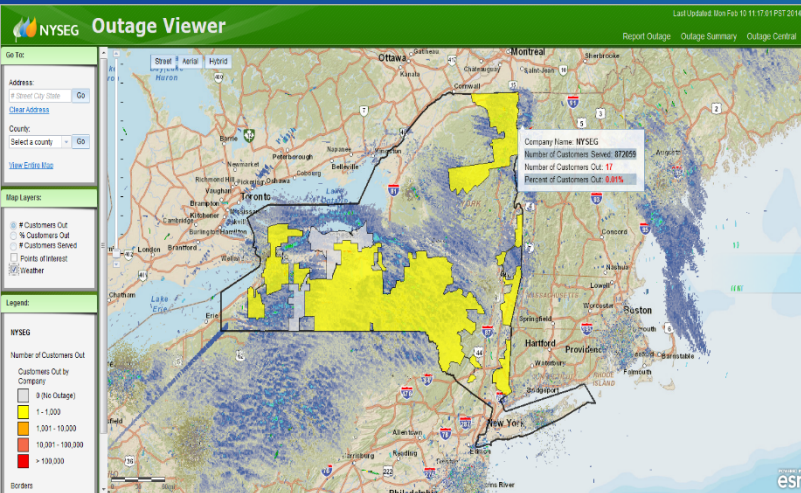
# Hurricane Sandy

- 14 additional servers (17 total)
- Central Maine Power - 34 million hits over 3 days
- New York State Electric & Gas – 76 million hits over 3 days

2/10/2014 -11:30 am



Peak Sandy Hours





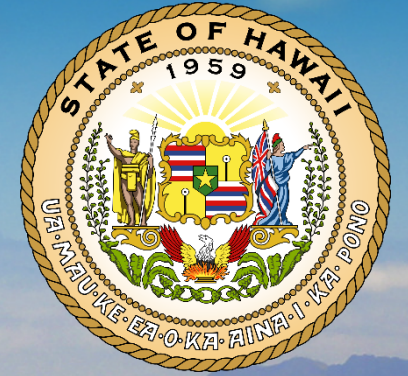
# Avangrid and the Cloud





# Migrating Enterprise GIS to the Cloud

Iterate from strength to strength



Phased adoption of Managed Cloud Services

Significant cost savings

Gained partner and service provider



# Hawaii and the cloud





# Data Center Consolidation Initiative

Reducing costs and improving GIS operations



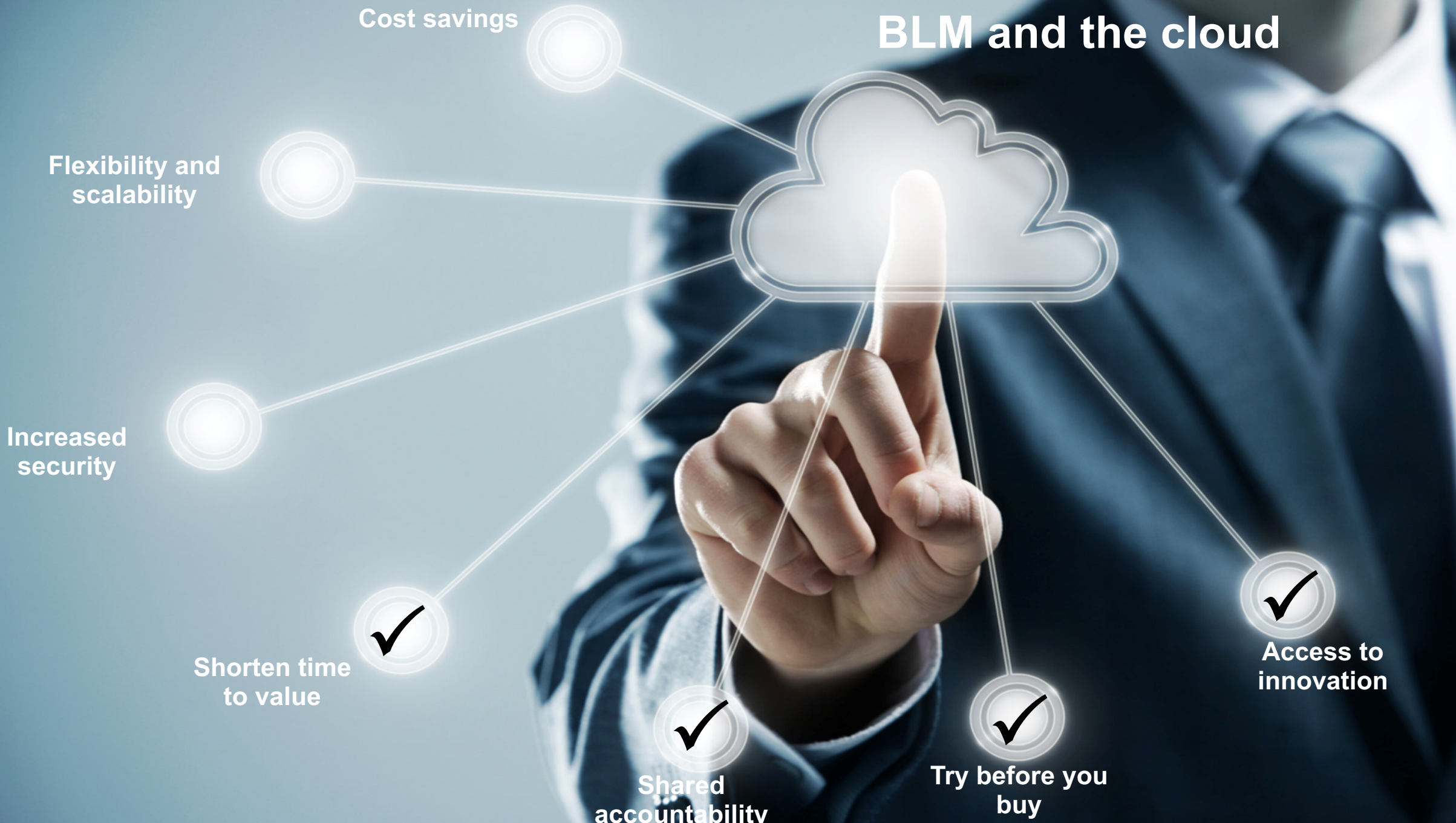
Navigating the journey to the cloud

3 month proof of concept

Evaluating ArcGIS for Desktop in the cloud



# BLM and the cloud



Cost savings

Flexibility and scalability

Increased security

Shorten time to value

Shared accountability

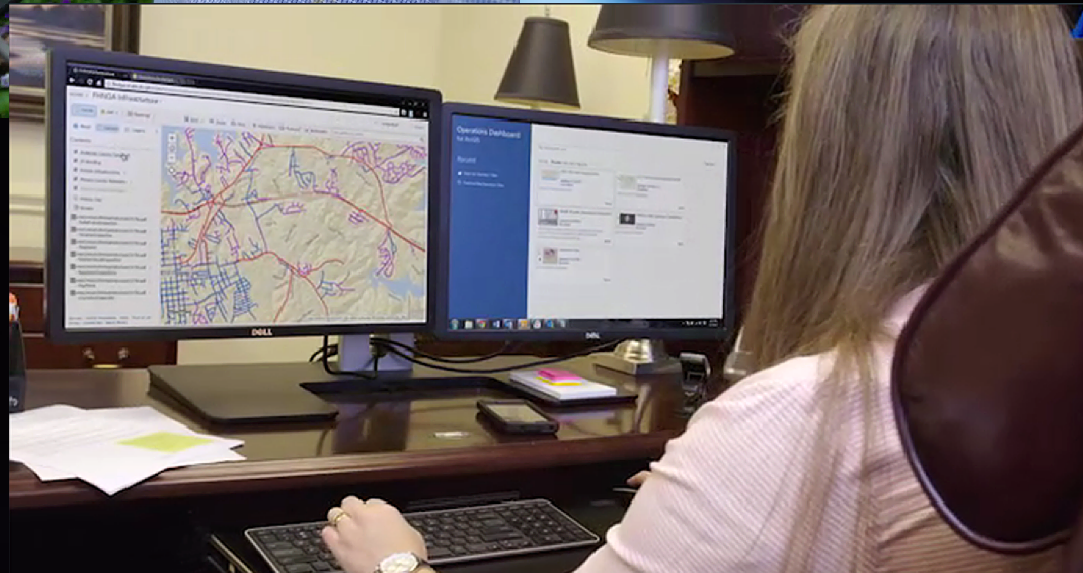
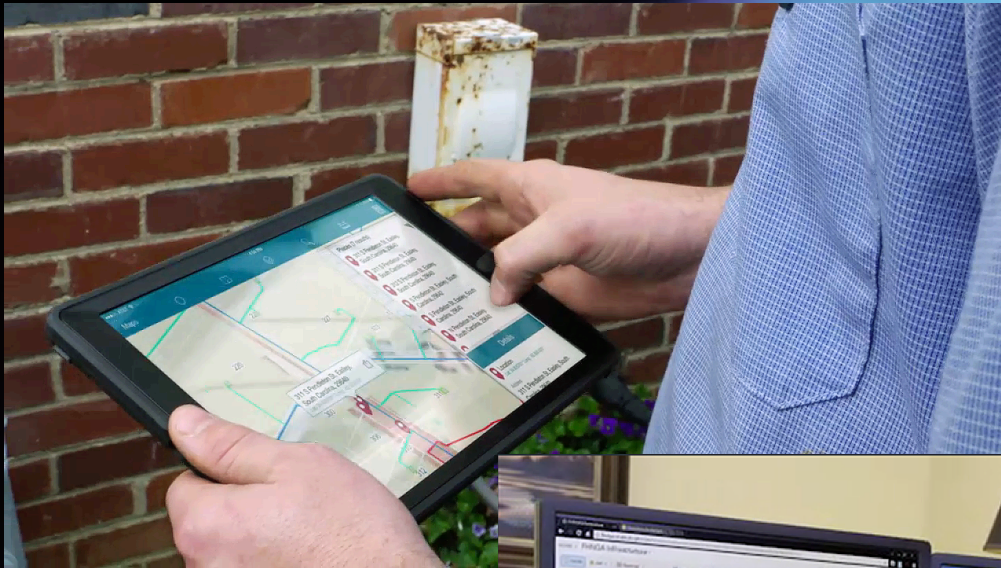
Try before you buy

Access to innovation



# Leveraging WebGIS in the cloud

*Bringing a location strategy to life*



Augmented capabilities with GIS and cloud experts

100% cloud-based GIS practice

Anywhere, anytime on any device



# Fort Hill Natural Gas Authority and the cloud

Cost savings

Flexibility and  
scalability

Increased  
security

Shorten time  
to value

Shared  
accountability

Try before you  
buy

Access to  
innovation





## Key takeaways

- You can realize the promises of the cloud
- Iterate from strength to strength
- Cloud adoption is a journey
- You don't have to do it all on your own



# Esri Cloud Readiness Assessment

Helping you determine where you're ready and where you'll need to pay extra attention

- 15-20 minute exercise
- Walk away with assessment and recommendations
- Areas covered:
  - Readiness/Preparation – Organizational Readiness and Data Management Practices
  - Logistics/Integration – Systems Integration and Workflow Integration
  - Application Development – General practices and customer applications
  - Architecture – Security and Use patterns



# Tech Session

“Leveraging Esri’s Managed Cloud Services to Help Your Organization”

3:15-4:30 PM, Room 01A





esri

THE  
SCIENCE  
OF  
WHERE