

Get More from the Cloud with Esri Managed Cloud Service

Alec Walker

UC



Inspire

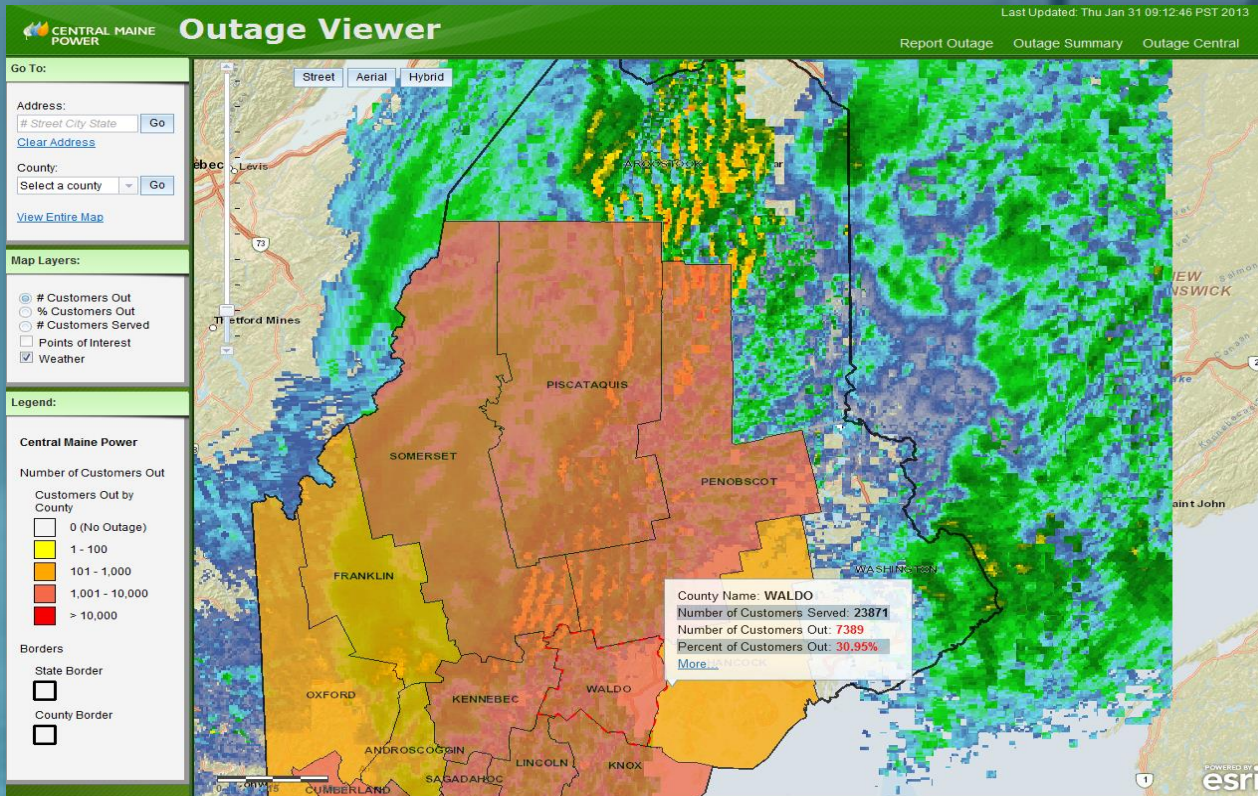


Promises of the cloud



Supporting variable usage

Maintaining system performance in the face of major events



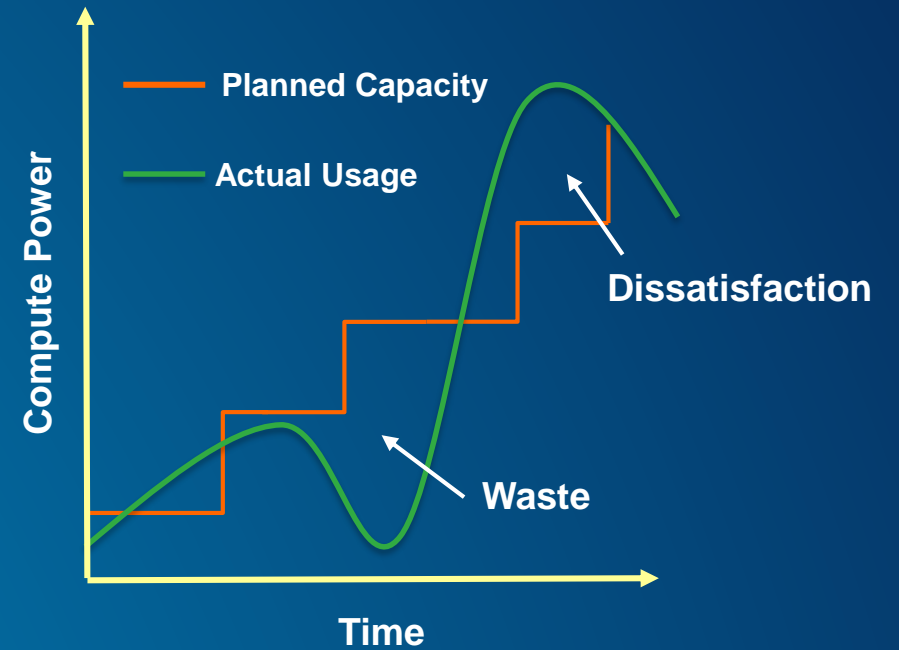
Highly available, scalable systems

Supports day-to-day usage and major events

Frequent, automated data updates

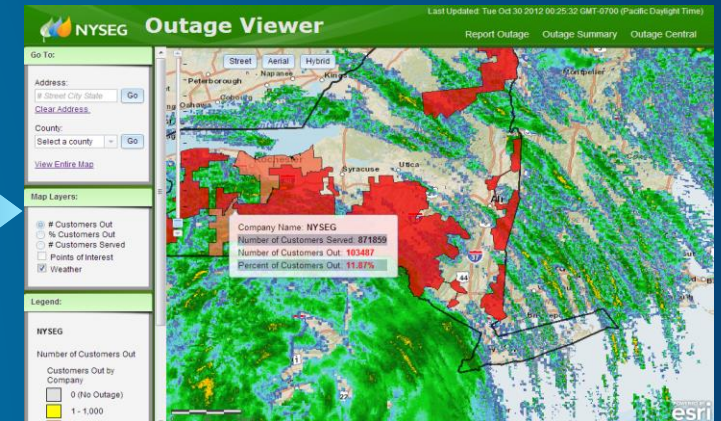
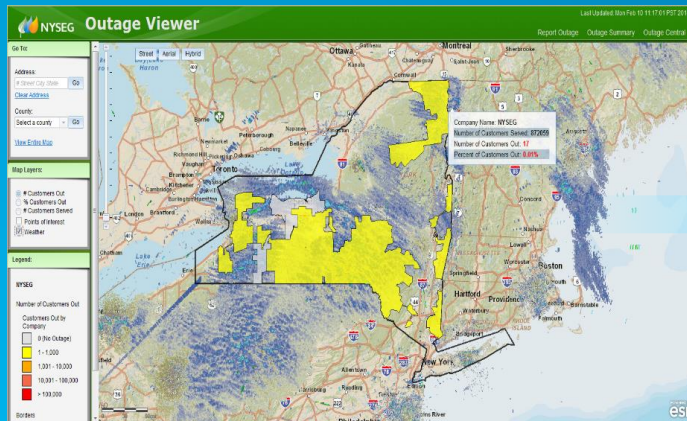
Hurricane Sandy

- 14 additional servers (17 total)
- Central Maine Power – 34 million hits over 3 days
- New York State Electric & Gas – 76 million hits over 3 days



2/10/2014 -11:30 am

Peak Sandy Hours



Avangrid and the Cloud



Migrating Enterprise GIS to the Cloud

Iterate from strength to strength

- Phased adoption of managed cloud services
- Significant cost savings
- Gained partner and service provider

Placeholder for Hawaii slide
from kiosk display



Hawaii and the cloud



Data Center Consolidation Initiative

Reducing costs and improving GIS operations



Navigating the journey to the cloud

3 month proof of concept

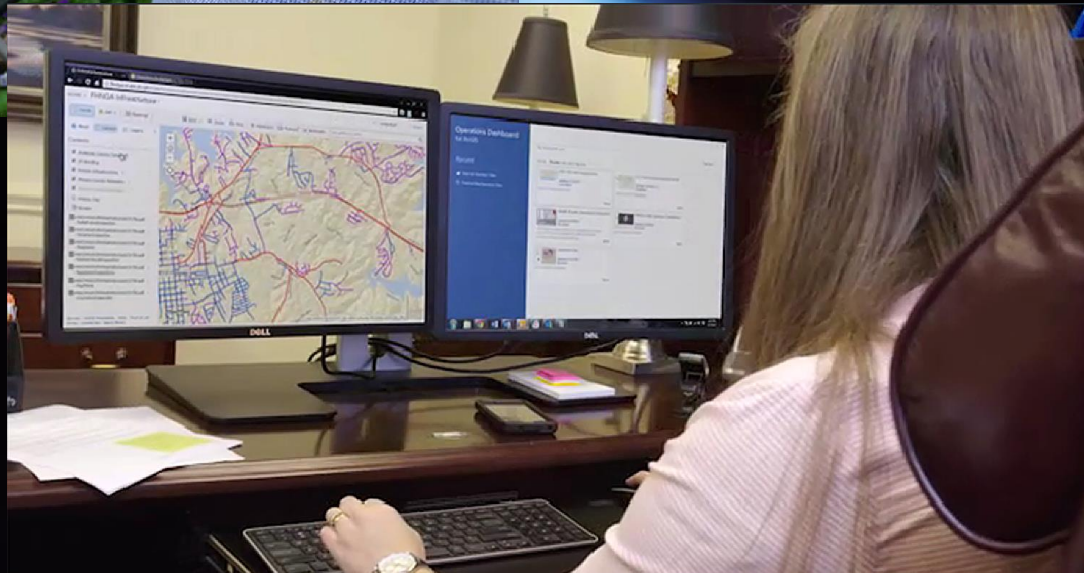
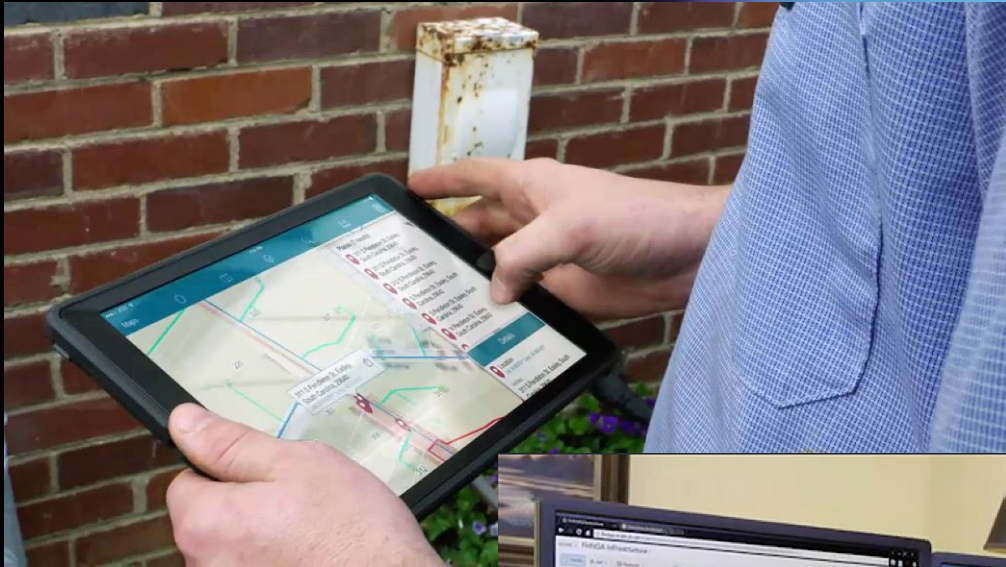
Evaluating ArcGIS for Desktop in the cloud

BLM and the cloud



Leveraging WebGIS in the cloud

Bringing a location strategy to life

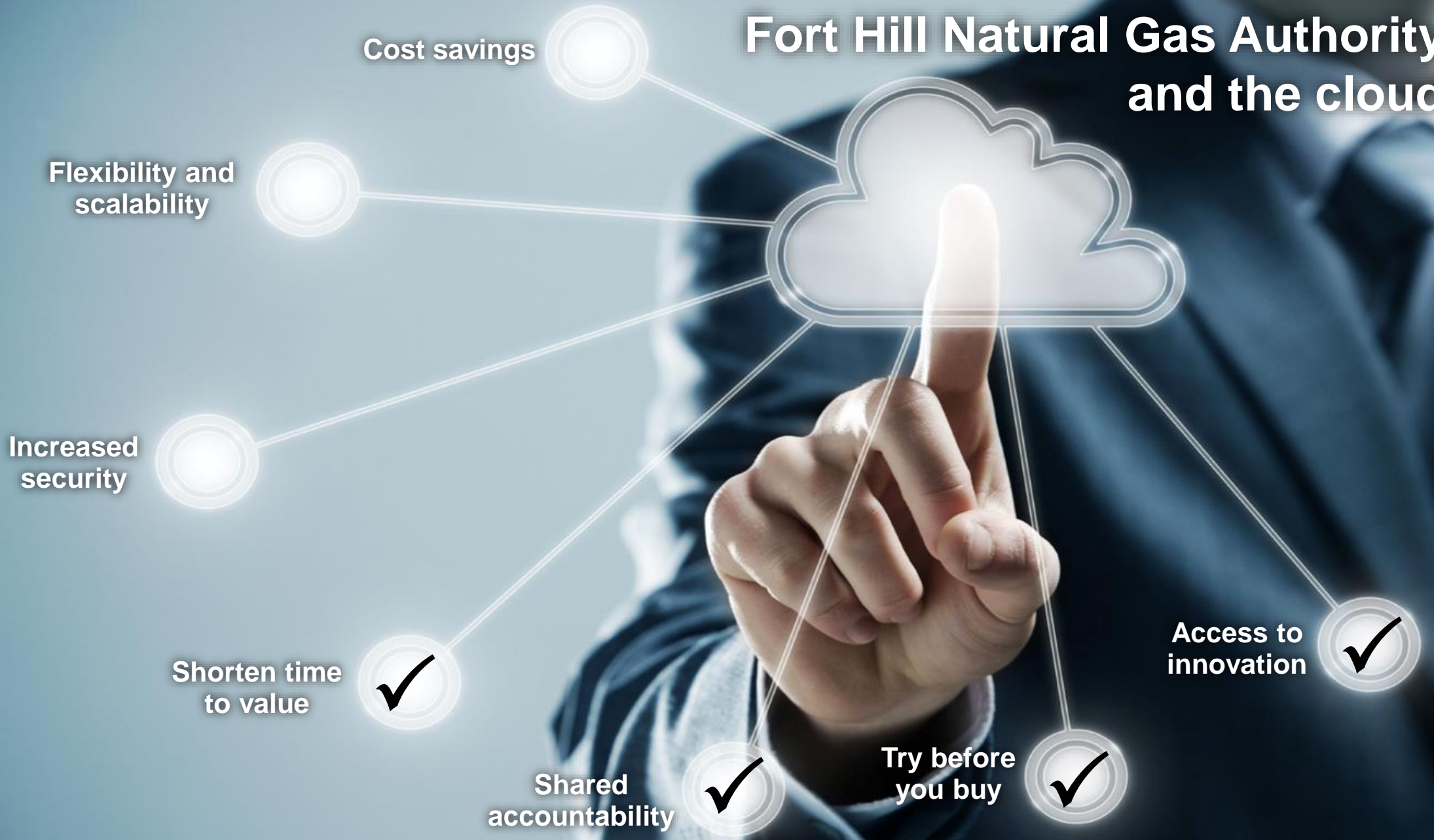


Augmented capabilities with GIS and cloud experts

100% cloud-based GIS practice

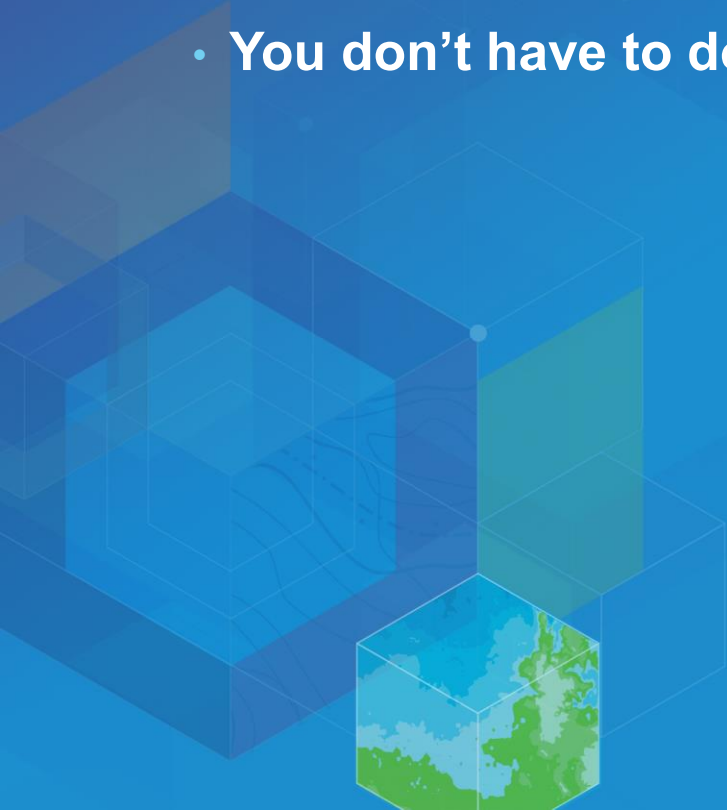
Anywhere, anytime on any device

Fort Hill Natural Gas Authority and the cloud



Key takeaways

- You can realize the promises of the cloud
- Iterate from strength to strength
- Cloud adoption is a journey
- You don't have to do it all on your own



Invitation to cloud readiness

Help organizations determine how and when to move to the cloud

- **10-20 minute consulting activity**
- **Evaluate an app, dataset, or workflow**
 - Organization Readiness/Preparation
 - Architecture
 - Logistics/Integration
 - Application Development
- **Leave with results and recommendations**



“Deploying Apps in the Cloud”

Tech Session

3:15-4:30 PM, Room 01A/B





esri®

