

ArcGIS for Land Records: Beyond Metes and Bounds

Dan Stone

UC



esri

Land Records Basics

What is Land Information?

Information describing legal, physical, and cultural data about the land

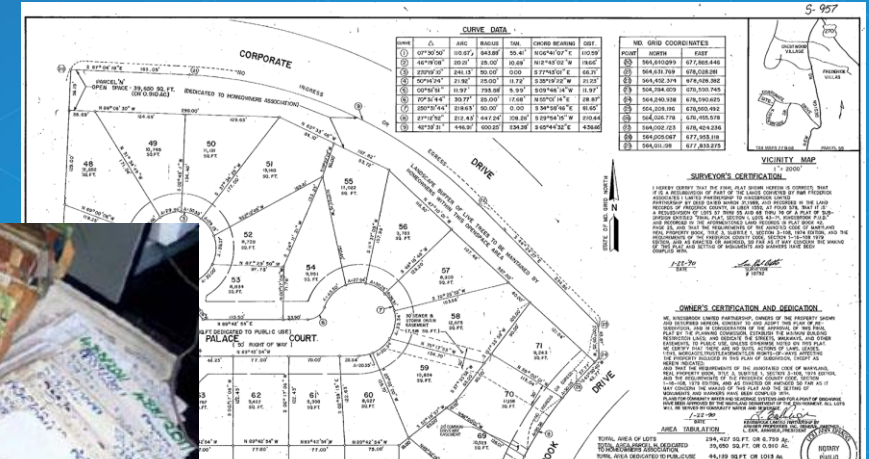
Land Information System

A geographic information system for cadastral and land-use mapping geared toward legal, administrative and economic spatial analysis. Most commonly found among municipal agencies

The **land parcel** is the basic unit for access and control of land, land use decisions



Manual cadastre information storage in Zambia (Source: Zambia Survey Department)



Today's Business Requirements

Expectations and business requirements have changed.....

- Historically, GIS has been used to support mapping and visualization
- GIS today supports many more requirements, and continues to evolve



Falling Values, Rising Taxes

Thousands Of Property Owners Are Contesting Assessments In An Effort To Rein In Tax Bills

NY assessment appeals near record



Hundreds appeal skyrocketing Jackson County property tax assessments



For Cities, Big-Box Stores Are Becoming Even More of a Terrible Deal

Under what has become known as the "dark store" method, big-box retailers are declaring their busy stores to be functionally obsolescent and therefore nearly worthless for tax purposes — and they're winning big judgments for back taxes. It's the latest example of the way that, even as local governments continue to bend over backwards to attract big-box development, these stores are consistently a terrible deal. [CONTINUE READING →](#)

Open Government Initiative

TRANSPARENCY + PARTICIPATION + COLLABORATION

OPEN GOV

[About Open Government](#) | [Open Gov Blog](#) | [Open Government Partnership](#) | [Participation](#) | [Collaboration](#)

My Administration is committed to creating an unprecedented level of openness in Government. We will work together to ensure the public trust and establish a system of transparency, public participation, and collaboration. Openness will strengthen our democracy and promote efficiency and effectiveness in Government.

— PRESIDENT OBAMA, 01/21/09



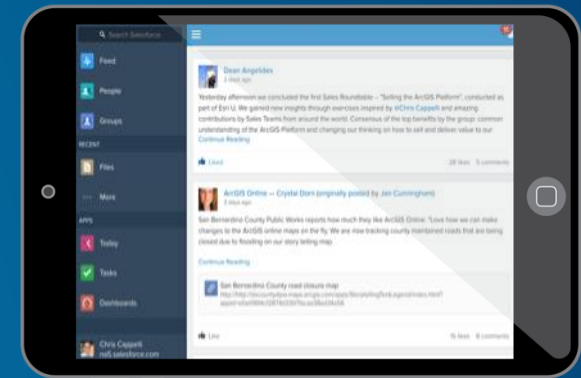
19% of Americans rely to some degree on a smartphone for accessing online services and information and for staying connected to the world around them; for 7% it is their only means

68%
Own a
Smartphone



87%
Using the
Internet

2.8
Devices Owned by
Knowledge Workers



Transforming Land Records with GIS

Providing the platform for changing requirements

Find New Revenue

Unpermitted Construction
Missing Real Property
Missing Addresses



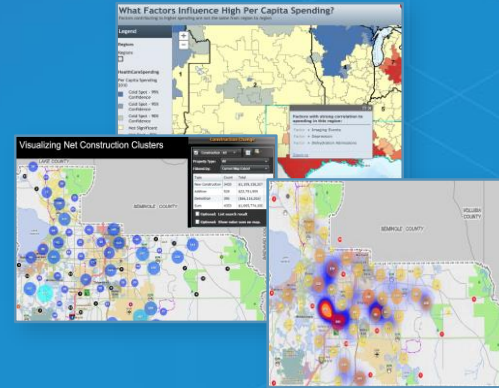
Reduce Appeals

Defensible Valuation Process
Dissemination of Authoritative Data
Public Access to Appraisal Information
Quality Control Process



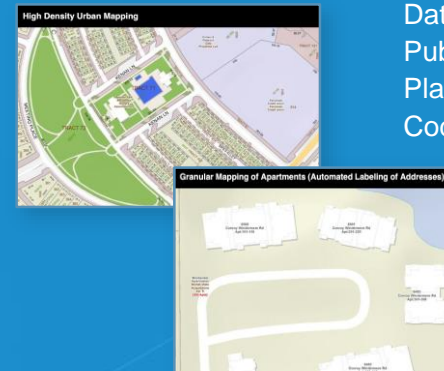
Improve Public Relations

Accessible Authoritative Data
Executive Access to Business Data
Platform for Citizen Collaboration
Executive Awareness of Local Issues



Improve Government Operations

Data Sharing
Public Safety/Emergency Management
Planning and Community Development
Code Enforcement and Permit Review



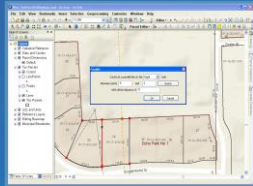
GIS – the enabling platform for actionable data.....

Managing Land Records

Supporting Local Government requirements.....

Parcel Management

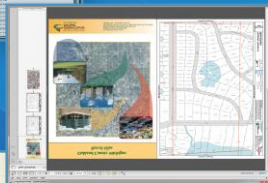
Parcel Editing



Quality Control



Map Production

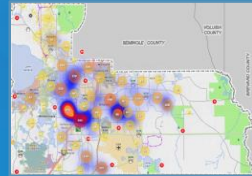


Address Management

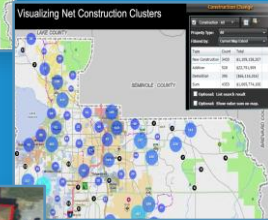


Valuation Analysis

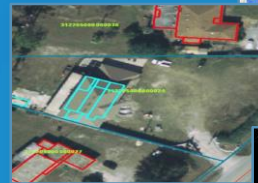
Foreclosure Mapping



Permit Visualization



Property Appraisal



Sales Comparison



CAMA Integration

Data Sharing

Modern Public Access



Open Data



Taxpayer Engagement

Enabling the Location Platform for Local Government.....

Architecture

System of Engagement



Public Access

- Historic Appeals
- Public Parcel Viewer
- Comparables Finder
- Top X Taxpayers
- Managing Appeals
- Day in the Life of an Assessor

Executive Access

- Value Analysis Dashboard
- Valuation Over Time
- Assessment Neighborhoods
- Exemptions
- Imagery Change Detection
- Top X Taxpayers
- Photo Survey
- Value per sq. ft.
- Esri Maps for Office



Operations Dashboard



Assessors

- Value Analysis Dashboard
- Valuation Over Time
- Assessment Neighborhoods
- Exemptions
- Imagery Change Detection
- Top X Taxpayers
- Photo Survey
- Value per sq. ft.

portal

System of Record



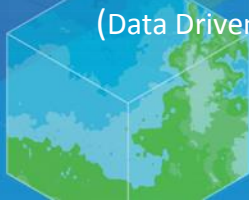
Editors

- ArcGIS Desktop
- ArcGIS Workflow Manager
- ArcGIS Data Reviewer



Map Library

(Data Driven Pages)



Interfaces to External Systems

(Recorder, CAMA)



Digital Plan Submission

- CAD submission of plans
- Approve/Reject reporting
- Automated conversion



ArcGIS for Server and Online content

Solutions.ArcGIS.com

The Solutions for Your Local Government

ArcGIS for Local Government - PLATFORM FEATURES DOCUMENTATION SUPPORT

Land Records

Manage an accurate inventory of real property, analyze land value and associated improvements, describe who owns the land, and convey land-use and zoning regulations.

Get Started
Learn how to leverage your geo... and the ArcGIS Platform to impr... activities and enhance citizen se...
[GET STARTED](#)

Online Mapping P...
Our ArcGIS Online model impler... organize your geographic inform... collaboration in your organizati...
[LEARN MORE](#)

From our Blog
What's new with the Find, Edit, and Filter app for ArcGIS Online (formerly Viewer)
March 21, 2014
As part of the March release of ArcGIS for Local Government, the Viewer application. The ... Cont...
[LEARN MORE](#)

Introducing the Find, Edit, and Filter app for ArcGIS Online
March 12, 2014
As part of the March release of ArcGIS Online, the ArcGIS for Local Government team released a new configurable web app ... Continue reading →
[MORE BLOG POSTS](#)

Discussions on GeoNet
Connection Lines
June 25, 2015
Can connection/connector lines be edited and/or ... Continue reading →

Engage Citizens

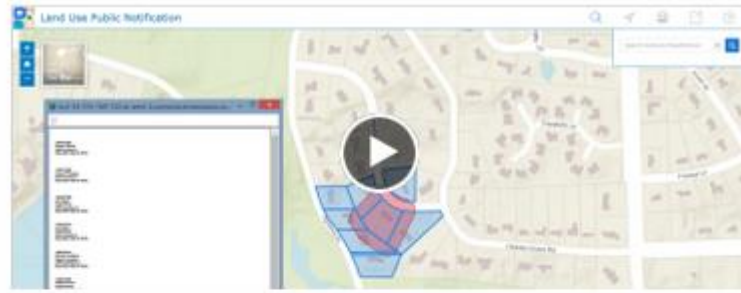
Notify Property Owners

Maintain Property Information
A collection of maps and apps used by mapping technicians to maintain a survey framework, examine deeds, inventory tax parcel descriptions, and publish property information.
[Learn more](#)

Aggregate Authoritative Data
Community Parcels can be used by organizations to aggregate authoritative parcel data and deliver focused parcel maps to key stakeholders.
[Download](#)
[Learn more](#)

Visualize Property Value
The Value Analysis Dashboard application can be used by assessors to visualize the impact of sales, foreclosures, and assessment appeals on property value and revenue in a neighborhood or tax district.
[Download](#)
[Learn more](#)

Recover Tax Revenue
A collection of maps and apps used by tax collection staff to identify, post, and sell delinquent tax properties.
[Learn more](#)



Notify Property Owners

The Land Use Public Notification application can be used

by staff to identify properties within (buffer) of a subject property and generate a list of owners and/or a structured text file of owner information.

- [Download](#)
- [Try it Now](#)
- [Learn more](#)

From our Videos



Emergency Assistance



Community Address Contribution ...



Community Address Aggregation Tools ...



Floodplain Inquiry

[MORE VIDEOS](#)

[Find](#) [Start](#)
 a Meetup Group a Meetup Group

Land Records Meetup

[Home](#) [Members](#) [Sponsors](#) [Photos](#) [Pages](#) [Discussions](#) [More](#)
[Group tools](#) [My profile](#)

Redlands, CA
Founded Dec 21, 2012

About us...

Invite friends

Land Records Professionals	1,088
Group reviews	16
Upcoming Meetups	1
Past Meetups	53
Our calendar	

[edit](#)

Organizers:
 Raquel Perez, Amir Bar-Maor, Amy Andis, Brent Jones, Chris Buscaglia, Jason Camerano, Noel Loughrin

Welcome to the Land Records Meetup!

+ SCHEDULE A NEW MEETUP

Upcoming 1 | Suggested 1 | Past | Calendar

Land Records Meeting at the Esri UC

San Diego Convention Center
111 West Harbor Drive, San Diego, CA (map)

Thu Jul 23 12:00 PM

RSVP

59 going 8 comments

A face to face meeting with members of the Land Records Meetup. Assessors, Cadastral Managers, Parcel Editors, Surveyors, Land Administration Professionals, County...

LEARN MORE

Hosted by: Amir Bar-Maor (Co-Organizer)

Recent Meetups

June 25 9:00 AM

E-Ring: ArcGIS Based Decision Support Systems For Assessors (09:00 AM PST)

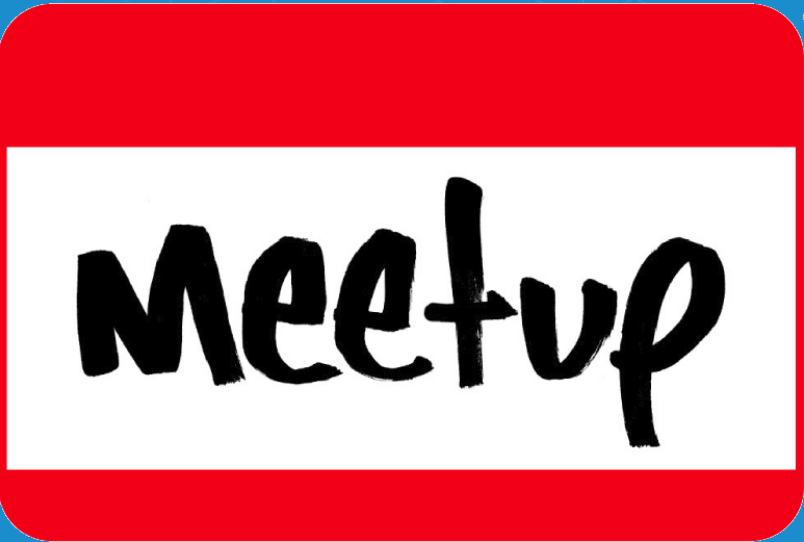
69 Land Records Professionals | ★★★★★

Note: this meeting is held at 09:00 AM PST How to join the meeting? • <http://esri.adobeconnect.com/land/> • Login as Guest (please supply name and organization name) •... LEARN MORE

What's new

- NEW MEMBER**
Ian joined June 25
- UPDATED PAGE**
Amir Bar-Maor updated Meeting's Recordings June 25
- NEW MEMBER**
Hello my name is J joined June 25
- NEW MEMBER**
BOB BATES joined June 25
- GROUP REVIEW**
Brent Jones wrote a group review June 25
- NEW MEMBER**
Michael Atchison joined June 25
- NEW MEMBER**
Madhukar joined June 24
- NEW MEMBER**
Derek Alford joined June 24
- NEW MEMBER**
Raj Radhakrishnan joined June 24

Land Records



GeoNet.Esri.com

Land Records Group

GeoNet
The Esri Community

esri

All Places >

Land Records



Following in ↔ 2 streams

Leave this group

Activity

Content

People

Projects

Reports

More ▾



Actions ▾

About

Share

Manage ▾





esri®

