



# Launch your Organization with Web GIS

Chris Martin & Umar Ahmad

# Session Agenda

- **Resource Assessment**
  - **Ownership**
  - **Start Simple**
  - **Example**

# Resource Assessment

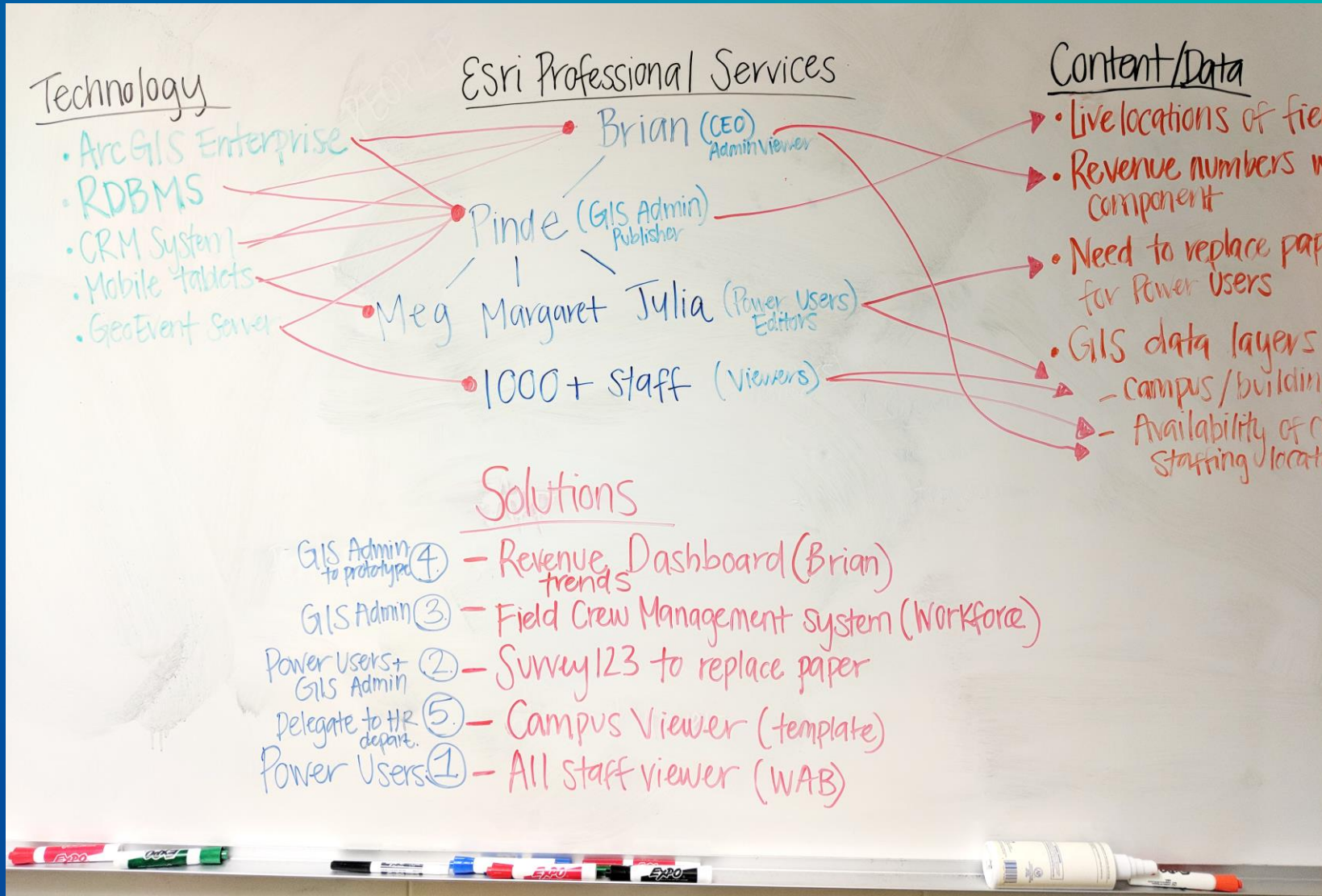
The image features a vibrant blue background with a gradient from dark blue on the left to a lighter teal on the right. The title "Resource Assessment" is centered in a bold, white, sans-serif font. The design is embellished with abstract, colorful geometric shapes and lines in shades of yellow, red, and white, primarily located in the corners and along the bottom edge. A faint, light-colored grid pattern is visible in the lower right quadrant.

# Resource Assessment

- Analyze Needs
- Identify:
  - Technology
  - Content
  - People
- Determine Priorities



# Resource Assessment

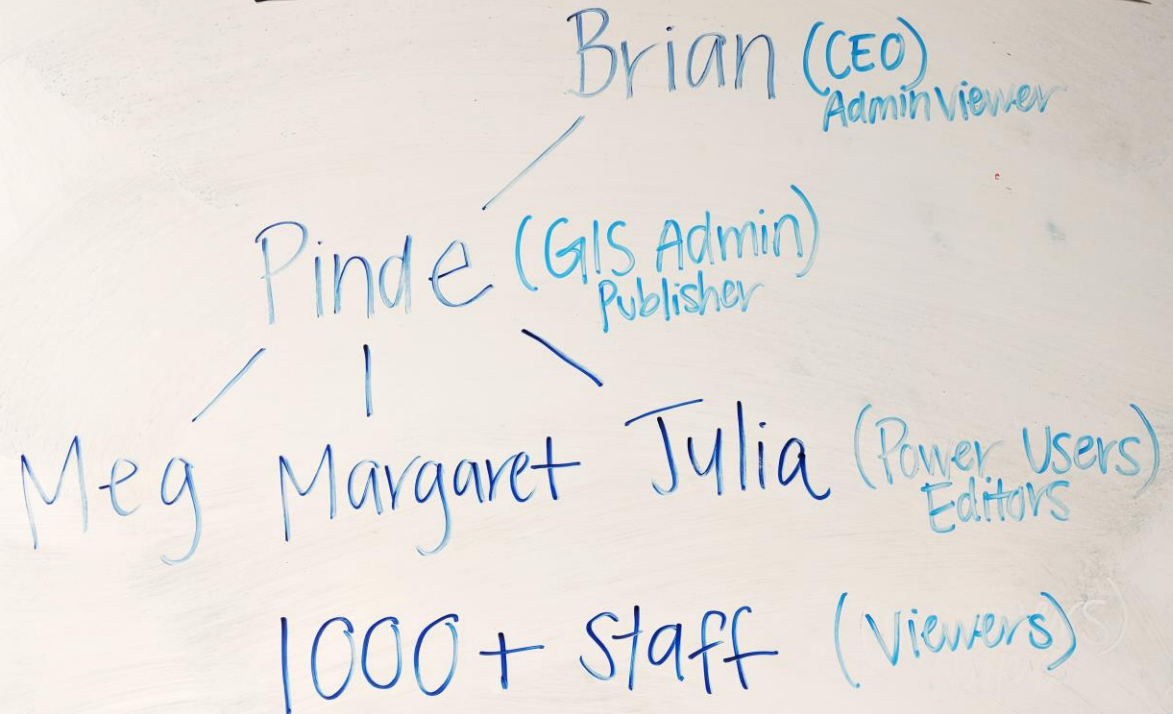


# People

- Who:

- An Advocate (CEO: Brian)
- Manager/Technology Lead (GIS Admin: Pinde)
- Technical Staff (Power Users)
- Audience (Viewers)

## Esri Professional Services



# Content

- What:
  - Datasets are available
  - Information is interesting, useful, cost saving, etc.
  - Is possible for our organization

## Content/Data

- Live locations of field crew
- Revenue numbers with spatial component
- Need to replace paper surveys for Power Users
- GIS data layers
  - Campus / buildings
  - Availability of consultants staffing locations

# Technology

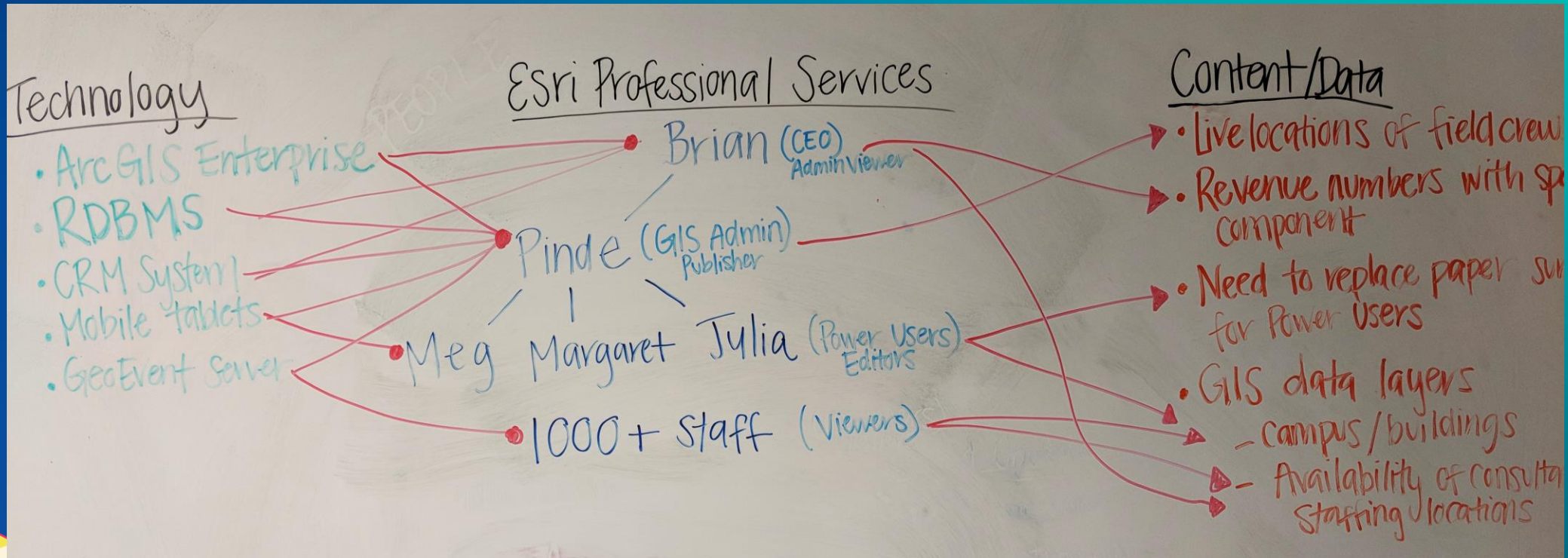
- How:
  - Which piece(s) of technology are available and appropriate
  - Do we have everything we need?

## Technology

- ArcGIS Enterprise
- RDBMS
- CRM System
- Mobile Tablets
- GeoEvent Server

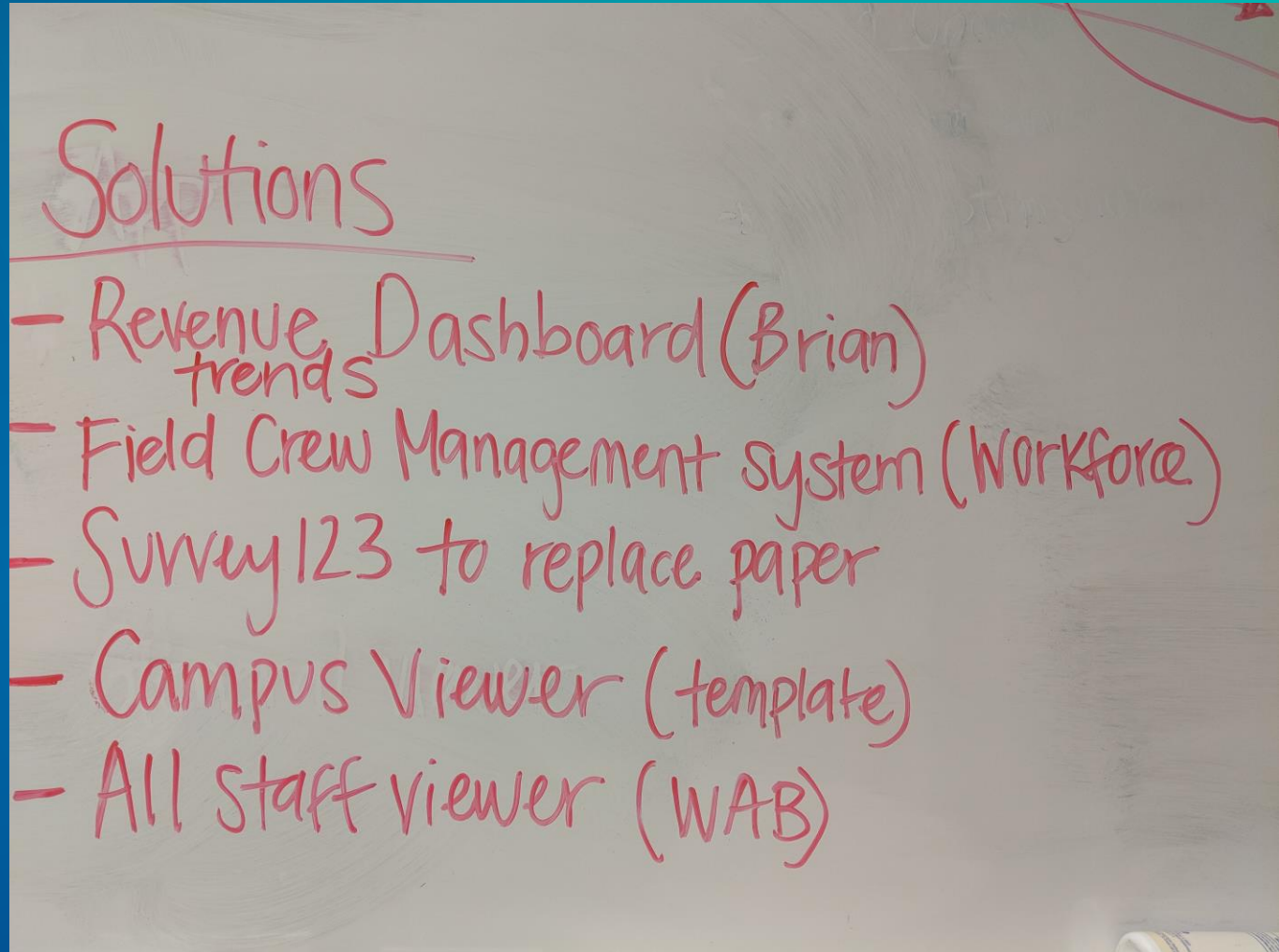


# Make connections



## To draw conclusions

- Results:
  - A plan of future activities in the form of solutions to problems solved through GIS



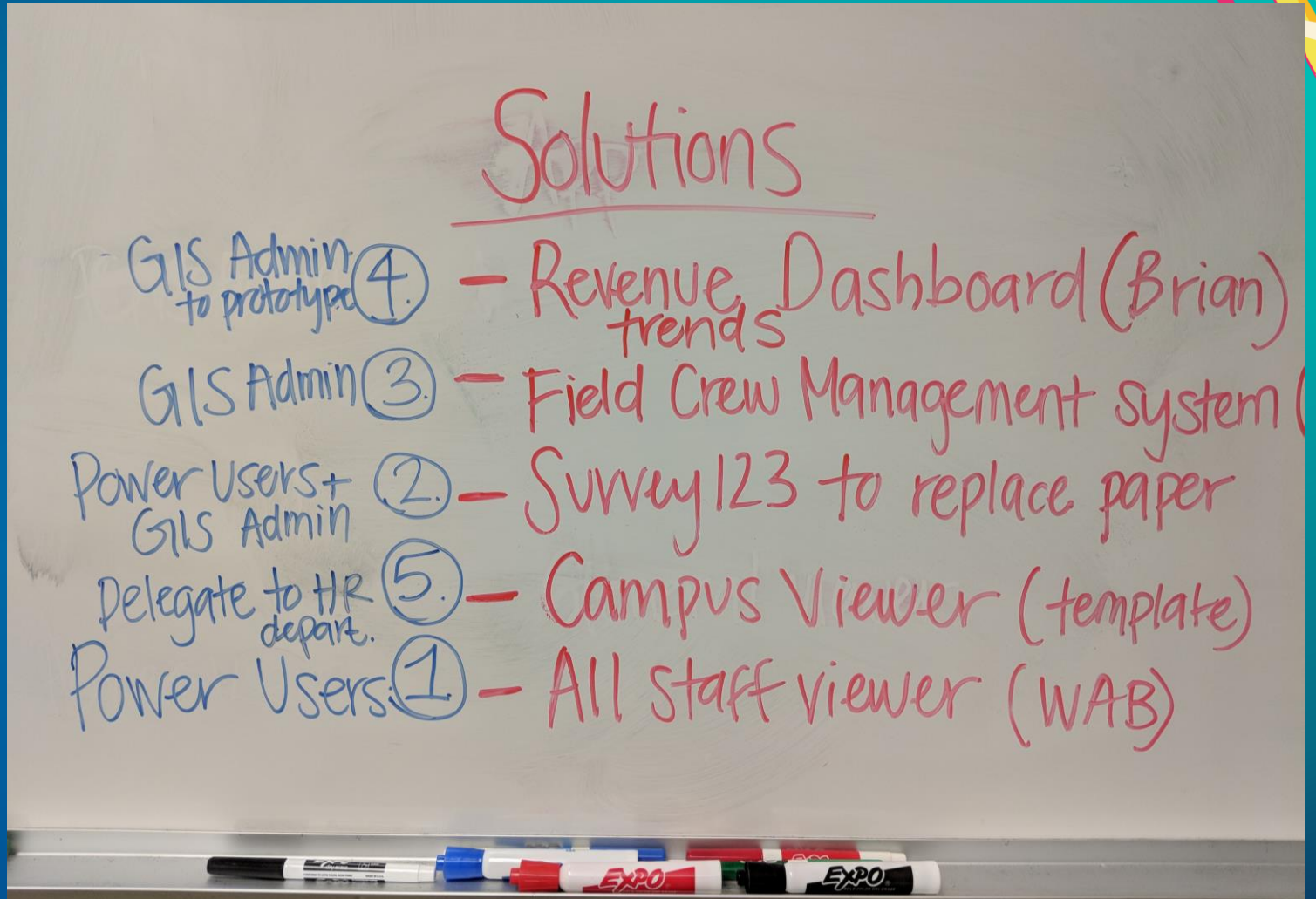
# Solutions

- ④ - Revenue Dashboard (Brian)  
trends
- ③ - Field Crew Management system (Workforce)
- ② - Survey 123 to replace paper
- ⑤ - Campus Viewer (template)
- ① - All staff viewer (WAB)

## To draw conclusions

- Results:

- A plan of future activities in the form of solutions to problems that GIS can solve
- Prioritized by importance/ease of completion
- **With ownership assigned**



People,  
Content &  
Technology

Make  
Connections

Derive  
Solutions

Prioritize

Assign  
Ownership

Start Simple

The image features a vibrant blue background with abstract, colorful geometric shapes in shades of yellow, red, and teal. These shapes are layered and oriented diagonally, creating a sense of depth and movement. The text "Putting it all together" is centered in a clean, white, sans-serif font.

**Putting it all  
together**

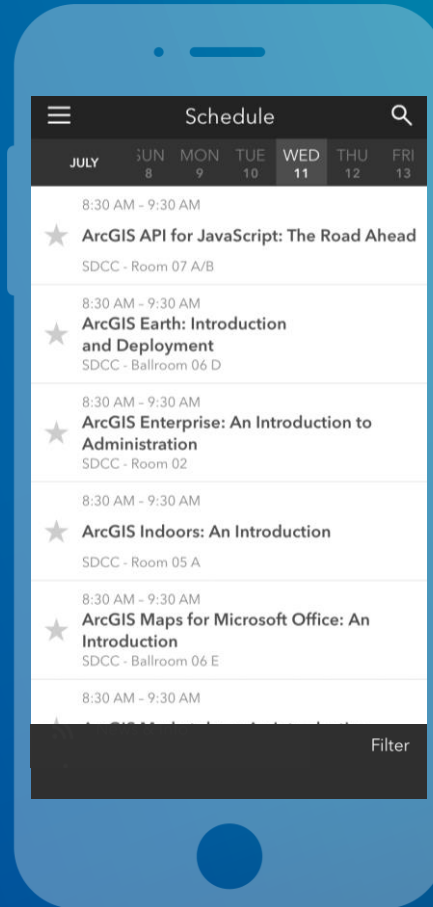
- **Take the time to plan your Web GIS presence**
  - **Consider scheduling a resource assessment**
  - **Plan the roles of your staff, set ownership responsibilities**
  - **Start with a simple application**

# Please Take Our Survey on the App

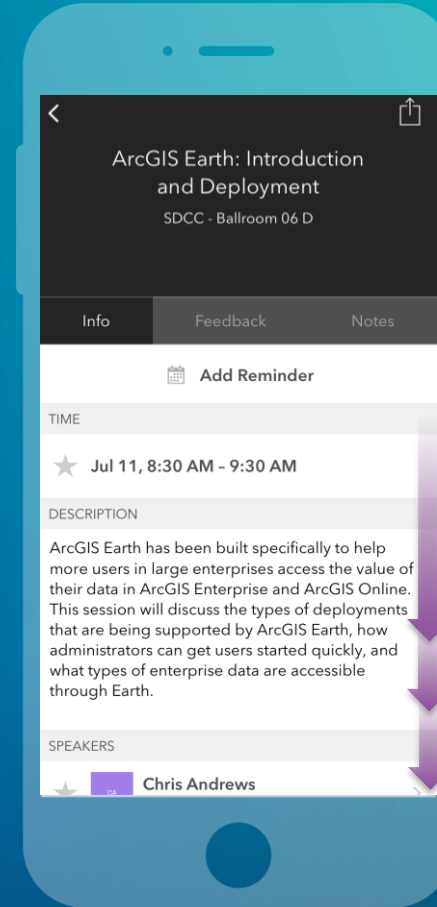
Download the Esri Events app and find your event



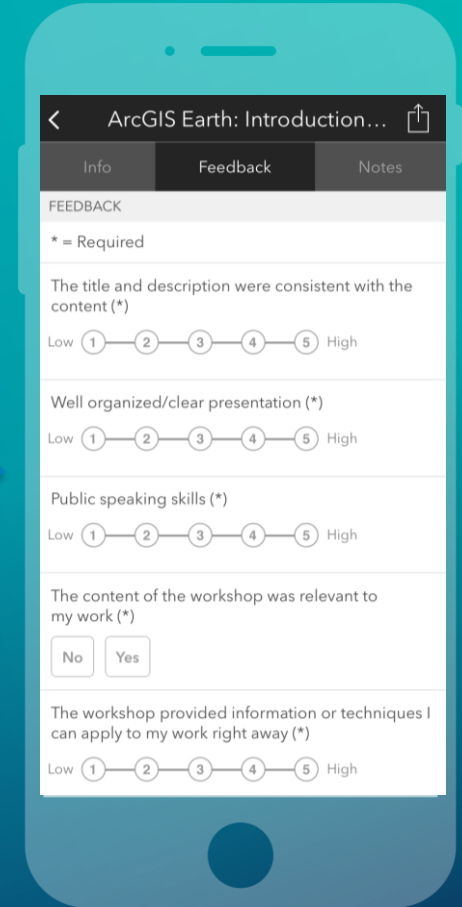
Select the session you attended



Scroll down to find the feedback section



Complete answers and select "Submit"







esri

THE  
SCIENCE  
OF  
WHERE