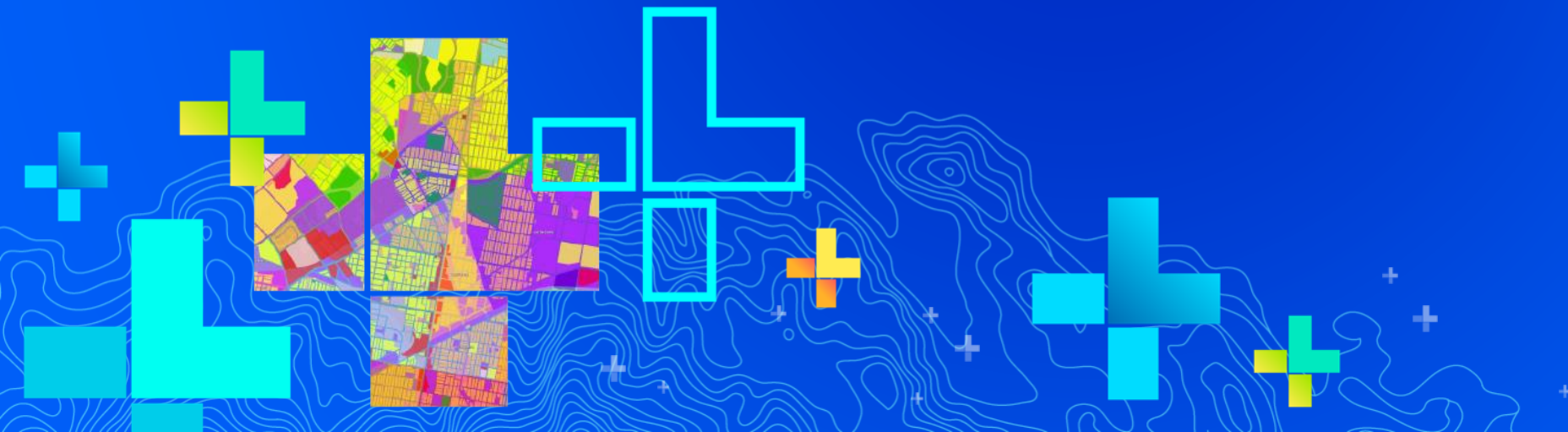


Are you Cloud Ready?

Ravishankar Jayaraman






Purpose

The benefits of moving GIS to the cloud appeal to you but is it practical for your organization? Attend this talk to understand what moving to the cloud involves and how to prepare.



... and Key Take Aways

- Stick to the basics
- Cloud options and potential benefits
- Esri GIS on Cloud



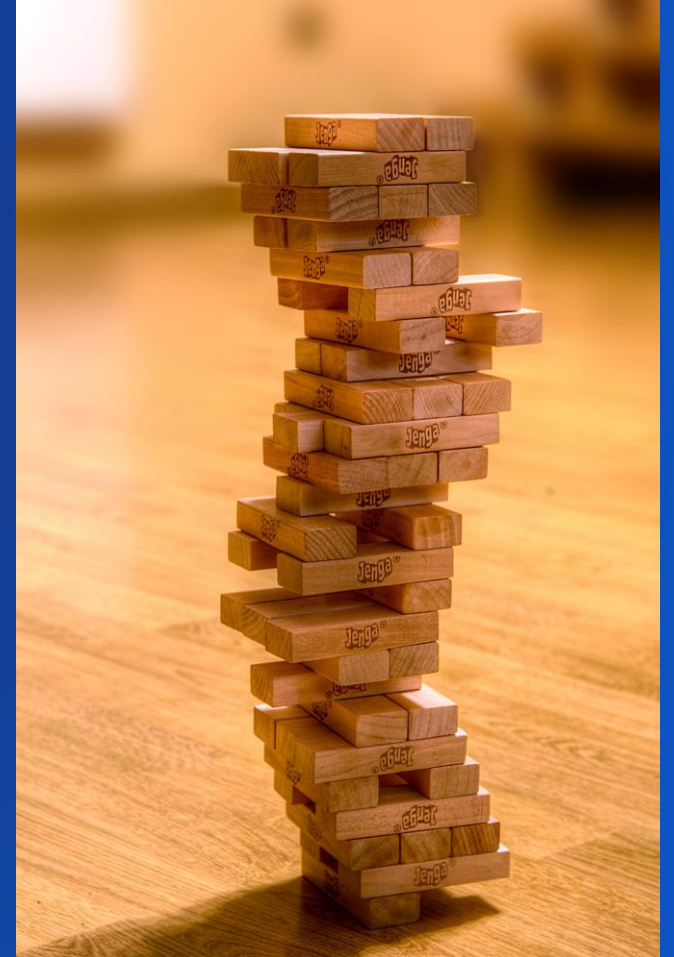
Team Lead,
Architecture Practice

- Define best practices for Esri System Deployment
- Manage or assist with designing and deploying Esri solutions
- Managed 160 engagements in 2018
- Helped 40 customers

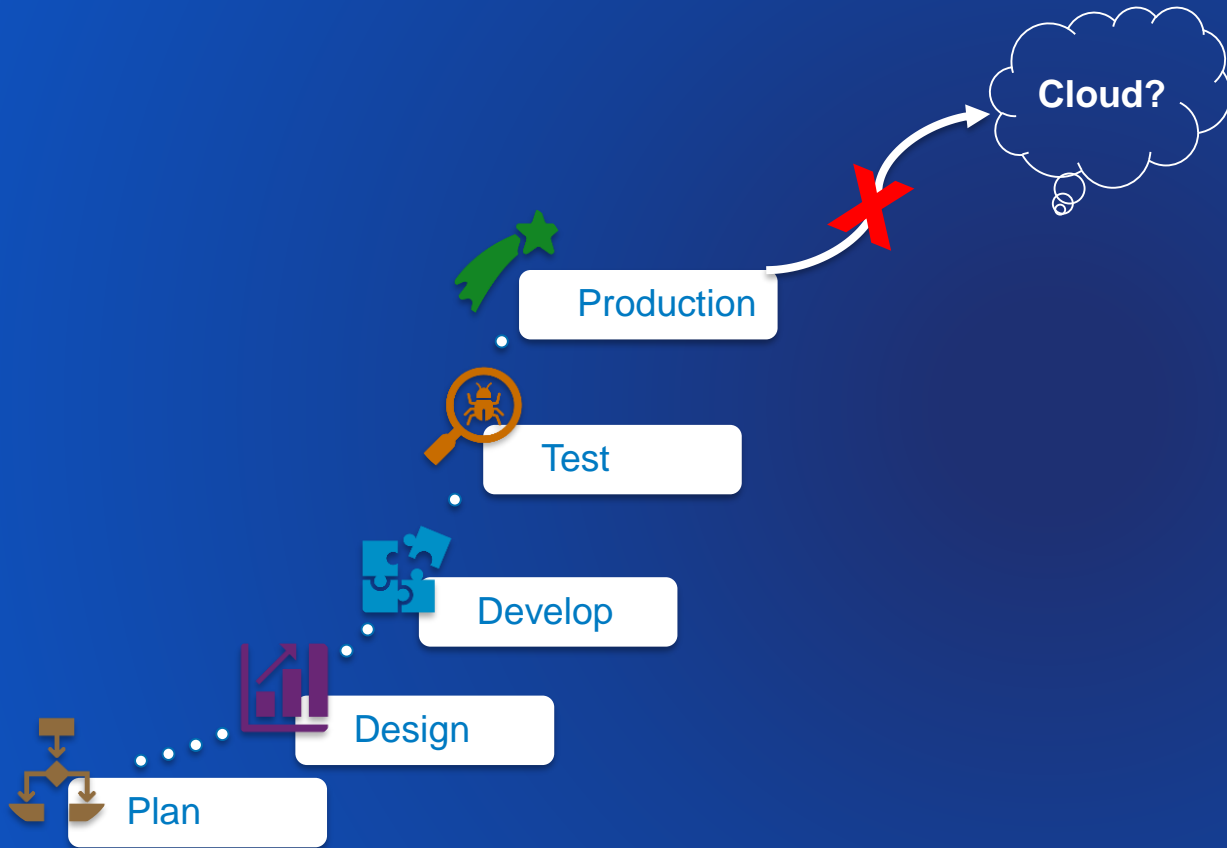
Reality Check



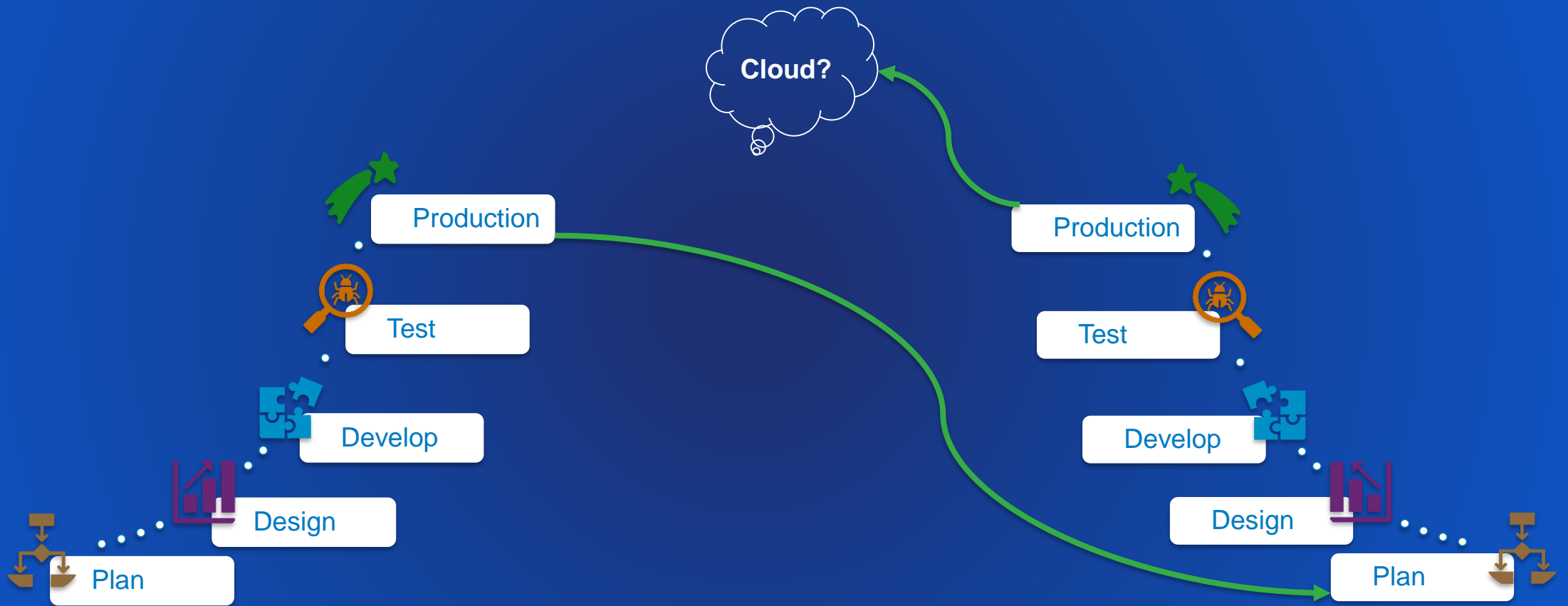
- Why do you want to move?
- Do you have the right people, knowledge, or partner(s) for your future state?
- Match function with environment



Stick to the Basics



Stick to the Basics



Together.....

Technology

Systems integration

Flexibility

Performance

Organizational

Skills

Staffing



The Benefits of the Cloud

Cost savings

Elasticity

Increased security

Rapid Deployment

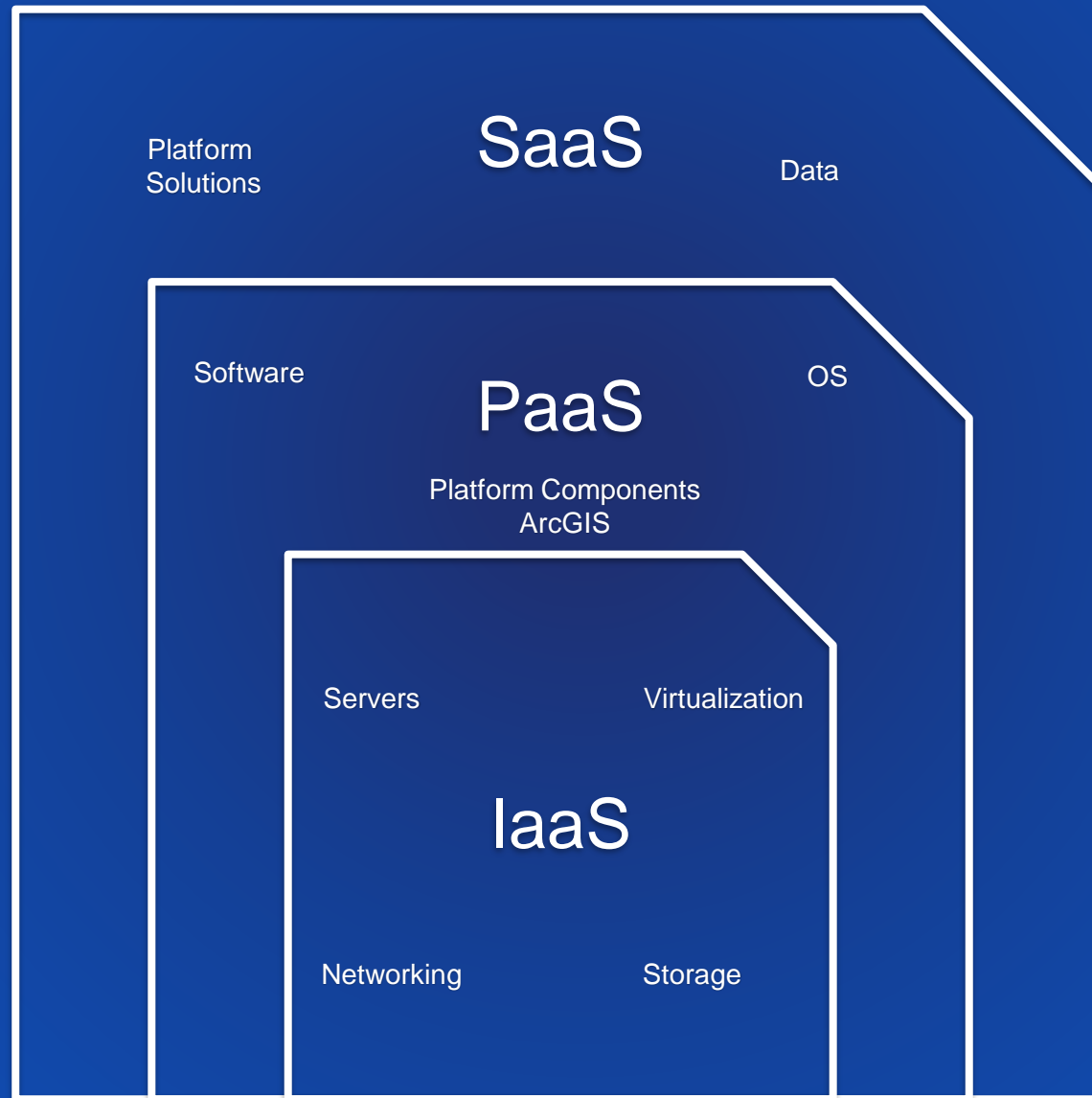
Mobility

Try before you buy

Access to innovation



Options



... Choose right

Esri Cloud Deployment Options

ArcGIS Enterprise



Self-Managed

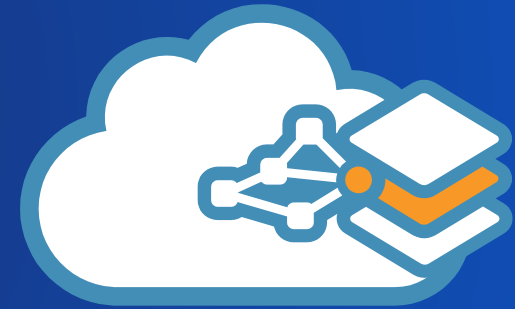
ArcGIS Enterprise



Managed Services

Partner- or Esri-Managed

ArcGIS Online



Do-it-yourself ← IaaS

PaaS

SaaS →

SaaS

Hybrid deployments most common

Considerations

ArcGIS Enterprise

- Cloud
- DevOps
- Security
- Continuous Monitoring
- ArcGIS
- Data Management
- App Management
- Operations

Self-Managed

ArcGIS Enterprise

- Data Management
- App Management
- Operations

Managed Services

Partner- or Esri-Managed

ArcGIS Online

- Data Management
- App Management

SaaS

Do-it-yourself ← IaaS

PaaS

SaaS →

Hybrid deployments most common

Other things to consider

- **Architecture Series: Designing your GIS**
- **Architecture Series: Moving to cloud**
- **Architecture Series: Deploying your GIS**
- **Engineering Series: Infrastructure as Code**
- **Engineering Series: Administering your GIS**



Questions?

Robust GIS Capabilities Using the Cloud

Tuesday, July 09 2:30 pm - 3:30 pm SDCC - Room 25 C

Moving to a Managed Cloud Services Environment: An Introduction

Wednesday, July 10 1:00 pm - 2:00 pm SDCC - Room 31 A

ArcGIS Enterprise: Cloud Operations Using Microsoft Azure

Thursday, July 11 8:30 am - 9:30 am SDCC - Room 31 B/C

How to be Successful with Esri Managed Cloud Services

Thursday, July 11 10:00 am - 11:00 am SDCC - Room 16 A

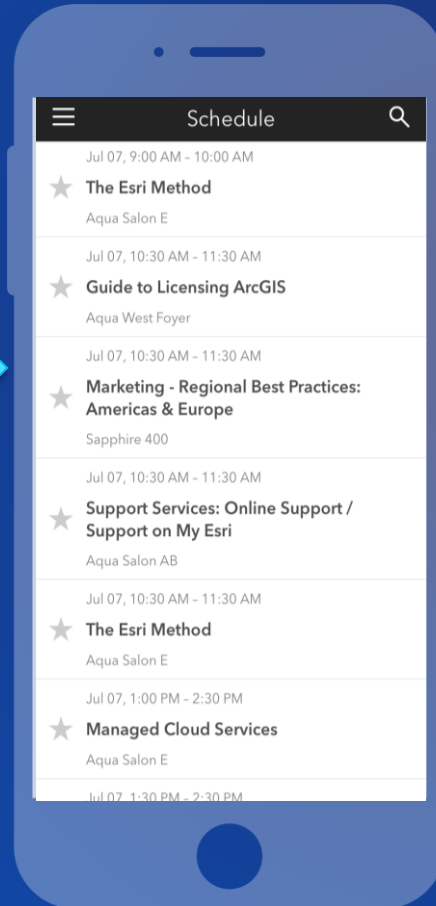


Provide your feedback in the Esri Events App

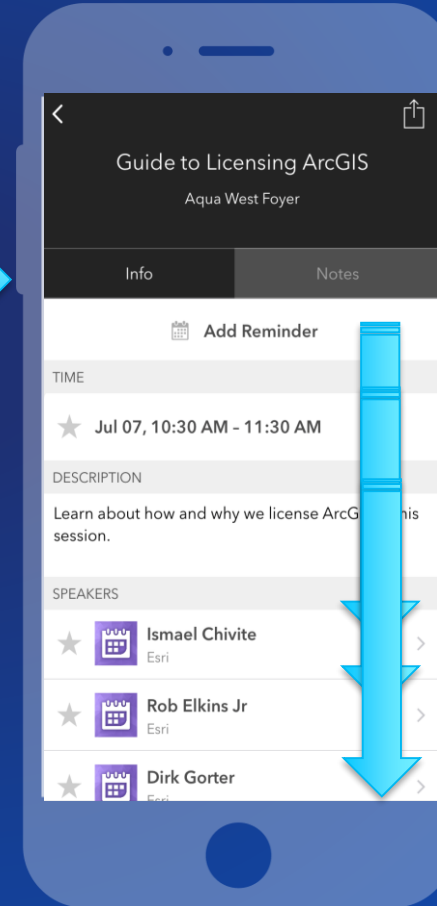
Download the Esri Events app and find your event



Select the session you attended



Scroll down to find the feedback section



Complete answers and select "Submit"

