

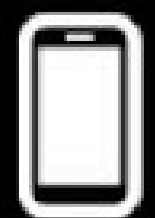
Interactive Presentation



Scan this QR
Code

Enter this URL in your
phone

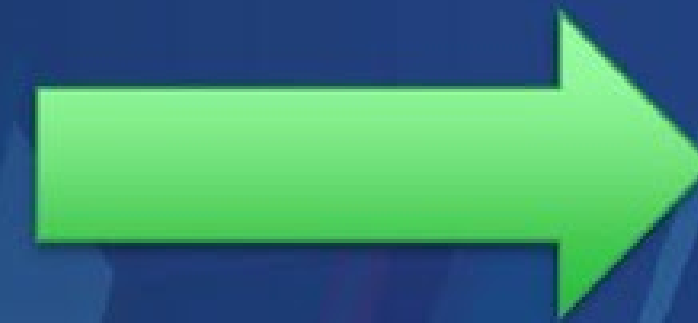
<https://swipe.to/0495kd>



Scan me



OR





Esri Best Practices: How to Drive a Successful GIS Project

Gerry Clancy

Jennifer Vaughan-Gibson

2019 ESRI
FEDERAL GIS CONFERENCE
WASHINGTON, DC

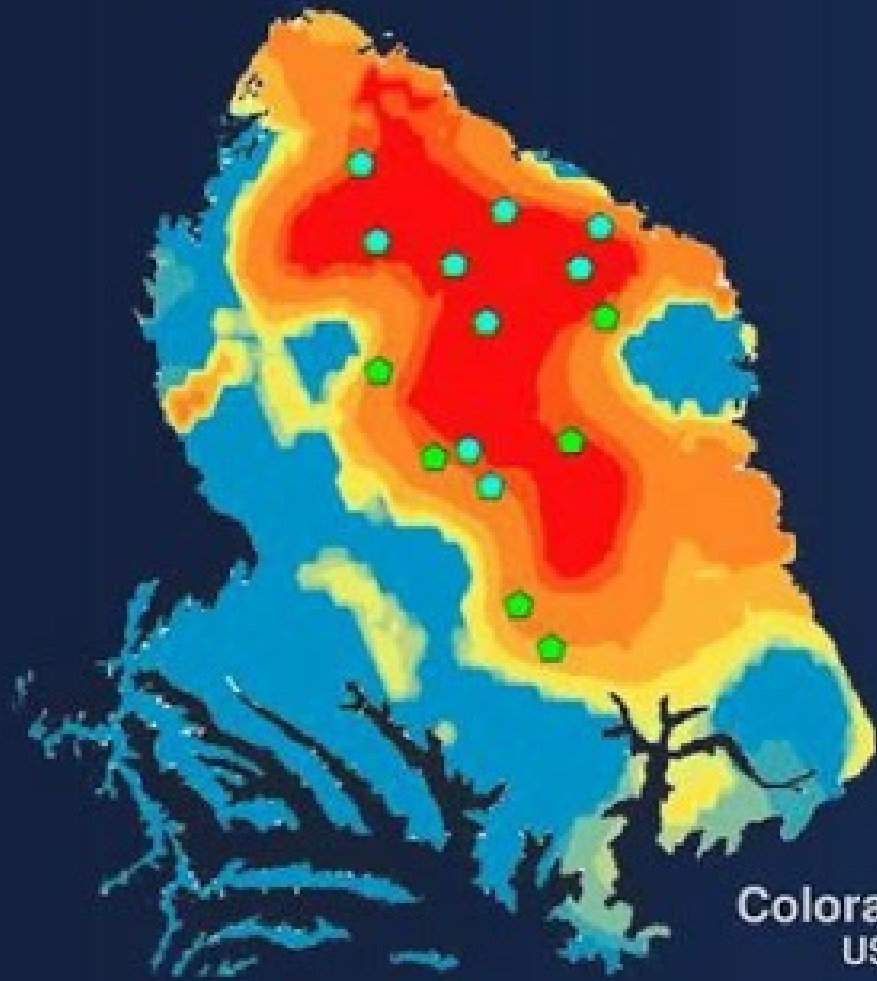
What is your primary role

2 Votes

- 1
- 2
- 3
- 4

What makes a Successful Project?

Optimum Well Selection



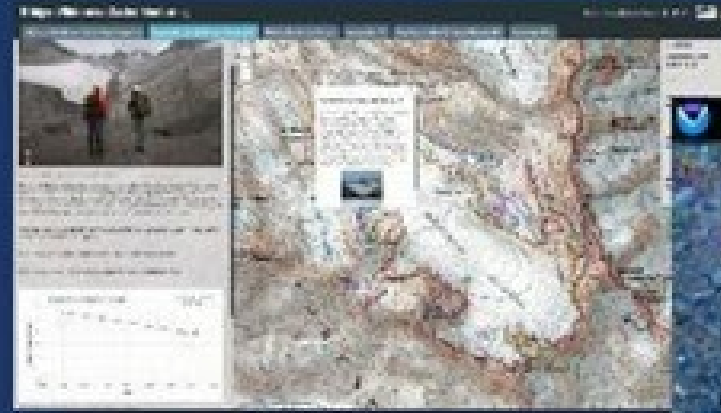
Colorado
USGS

Homeland Infrastructure Foundation Data (HIFLD)



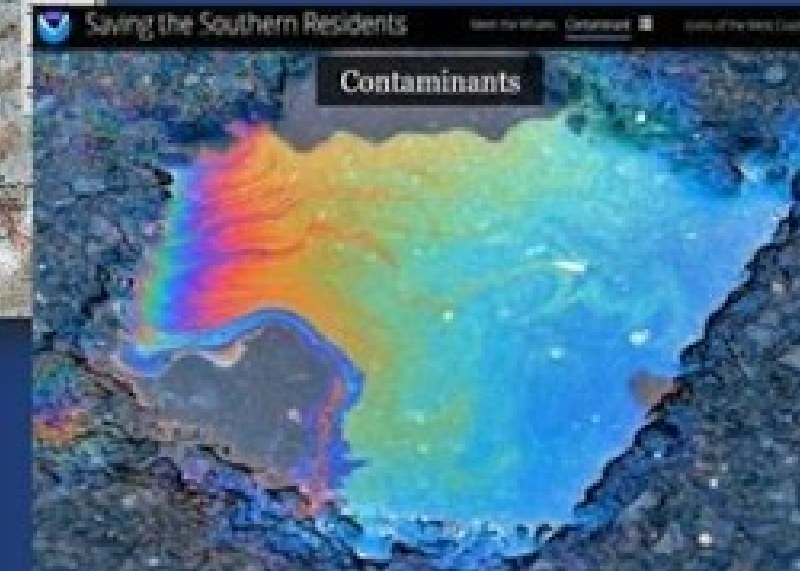
US
FEMA

Glacier Change



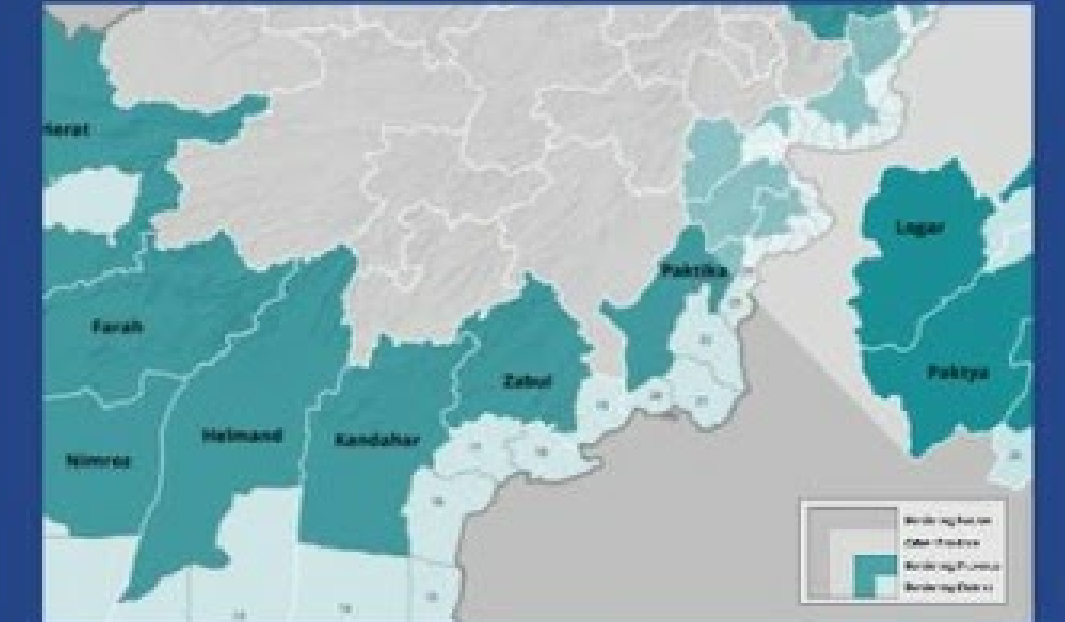
Wyoming
USDA Forest Service

Impacts to Killer Whales



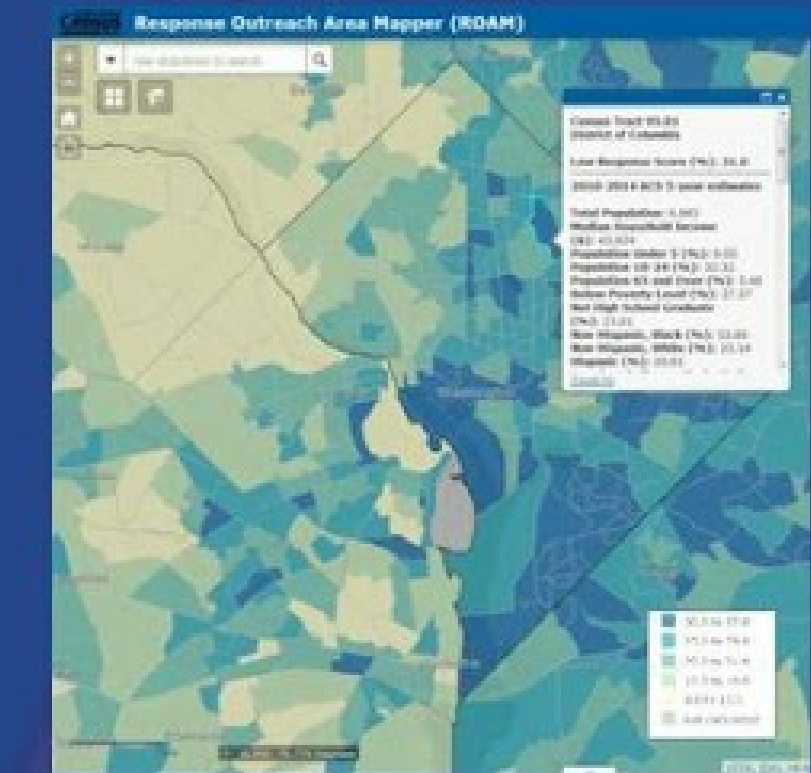
NOAA

Afghanistan Districts and Provinces



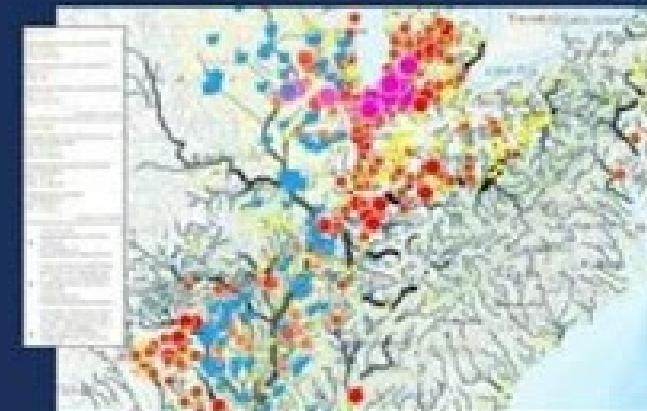
US DoD / TGI

Predicted Non-Response to Mail Out Census



US Census Bureau
District of Columbia

Flood Reporting with Social Media (Tweets)



USACE

Global Foundation Geospatial Management (FGM)



NGA

Fire Management



USFS

River Modeling



Texas
FEMA

Hydropower Asset Assessment



ORNL
United States

Project Management is Both Science and Art

It is science in that it relies on proven and repeatable processes and techniques to achieve project success.

It is an art because it also involves managing and relating to people and requires the project manager to apply intuitive skills in situations that are totally unique for each project.

A Pattern is Emerging



**The right
conditions**



**The right
approach**

Whether starting from scratch...

...or maturing existing GIS systems

Vision, Value and Business Objectives

What is the business reason for doing this project?

- What is the Customers Mission and Vision? How does this project align?
- Who are the key stakeholders? What is your engagement strategy?
- How does the project change workflows and are they adequately prepared?
- How will the organization benefit? Can we measure those benefits?

Define:

- Vision
- Strategy
- Success

Set
priorities

Focus on
business drivers,
not technology

Vision, Value and Business Objectives

What is the business reason for doing this project?

- What is the Customers Mission and Vision? How does this project align?
- Who are the key stakeholders? What is your management strategy?
- How does the project change the business? Are they adequately prepared?
- How will the organization realize those benefits?

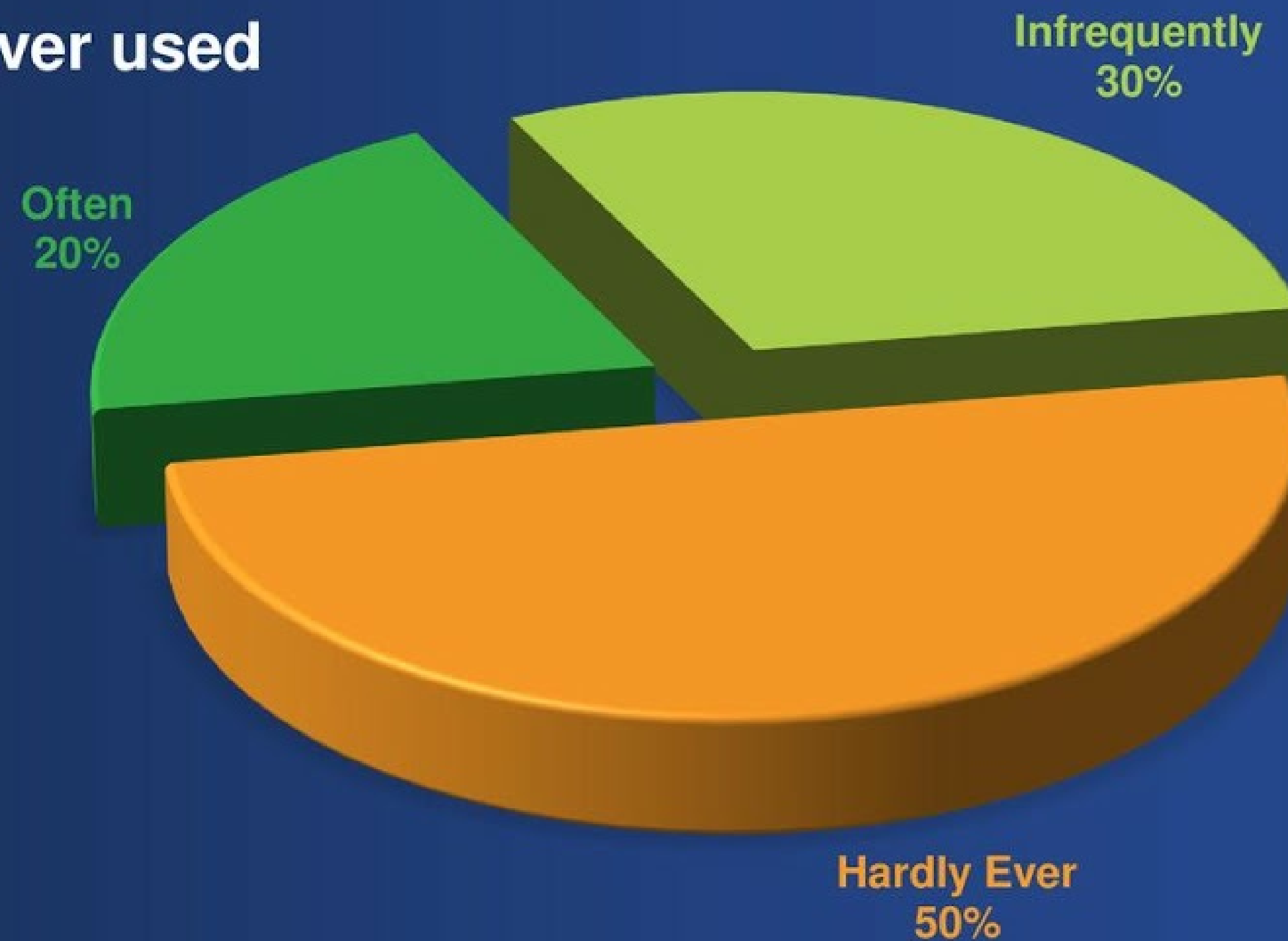
GIS for Leaders: Seven Elements of a Successful Enterprise GIS
Wednesday Wednesday 5:15 -6:15 pm
Room 209 C

Set
priorities

Focus on
business drivers,
not technology

Stay focused on what is important...

- What are the top 3 features that **MUST** be in the system
- Why do you need those features...what business value does it bring
- Over 50% of features are hardly ever used

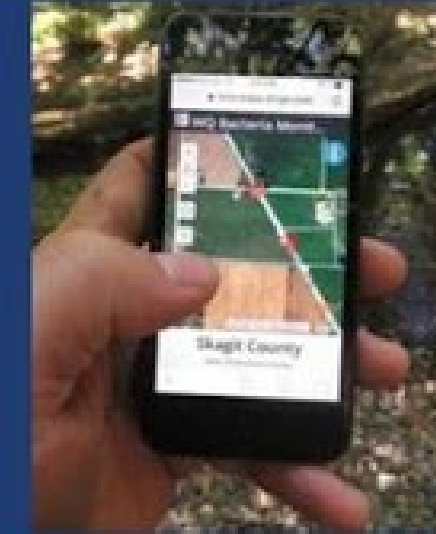


User Involvement

Focus on their workflows

Create Public facing maps and apps

Show the water quality risk in my neighborhood



Washington
WSDA

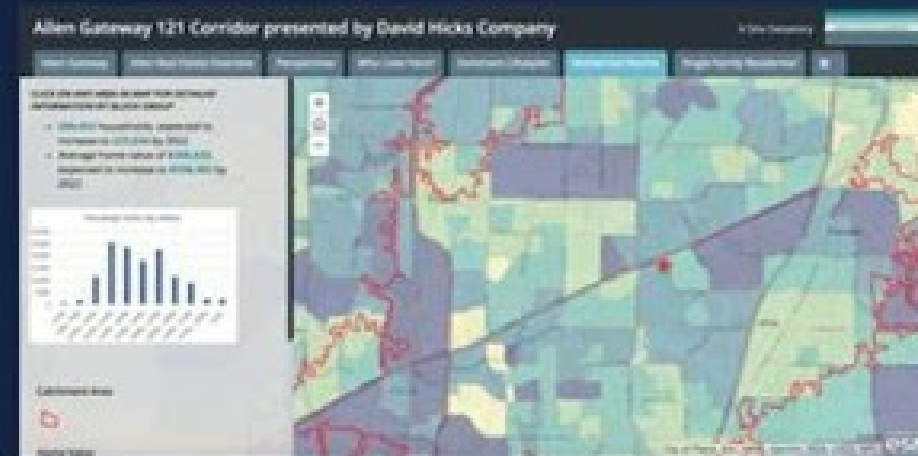
Telling Stories About Everything

Workforce



Washington
Datastory

Investors and
Potential Tenants



Texas
Datastory

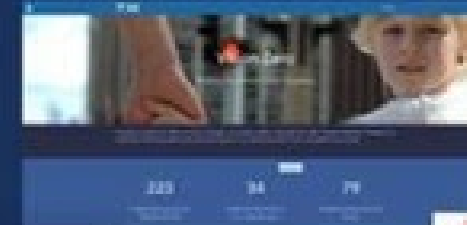
Community
Portal



Performance
Reporting



Initiatives



Open Data



Do you have a workforce development plan?

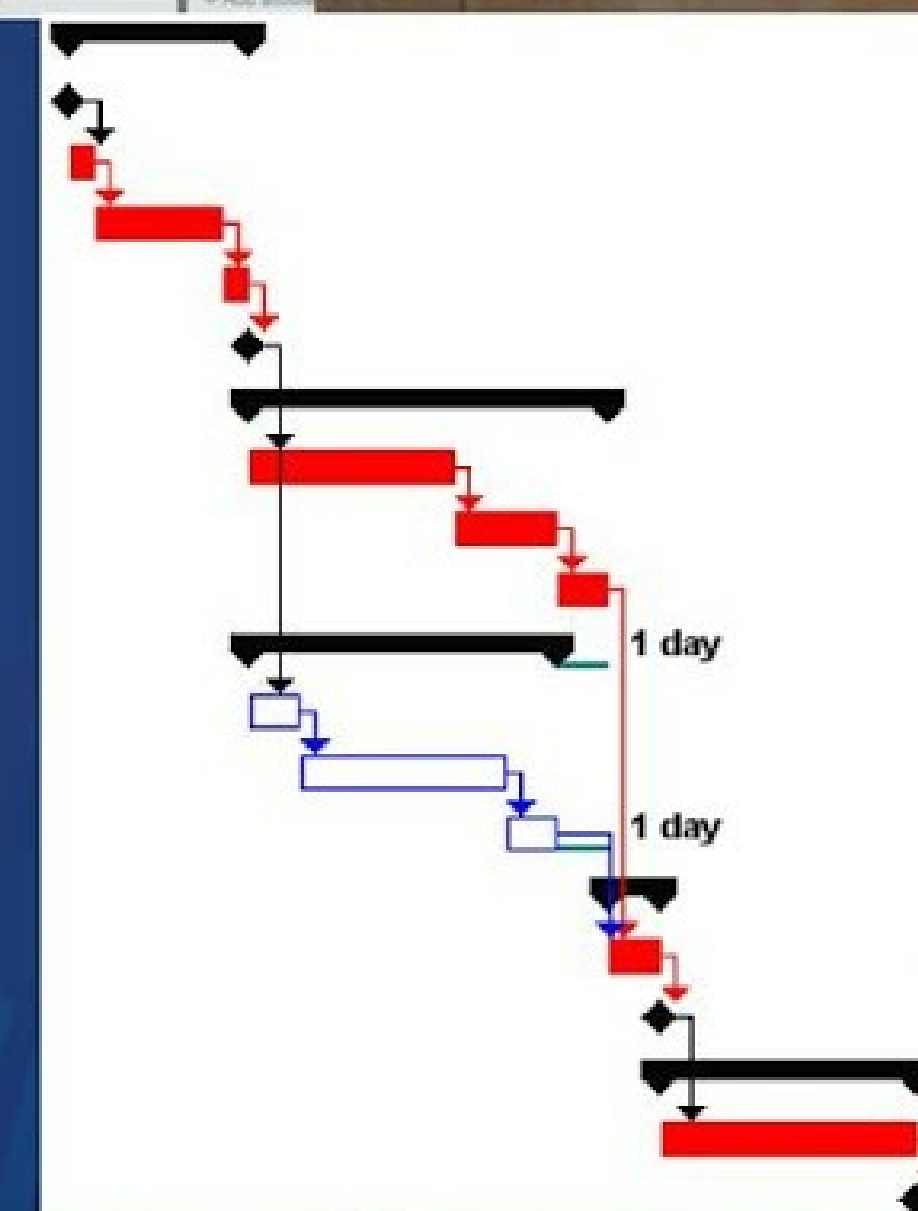
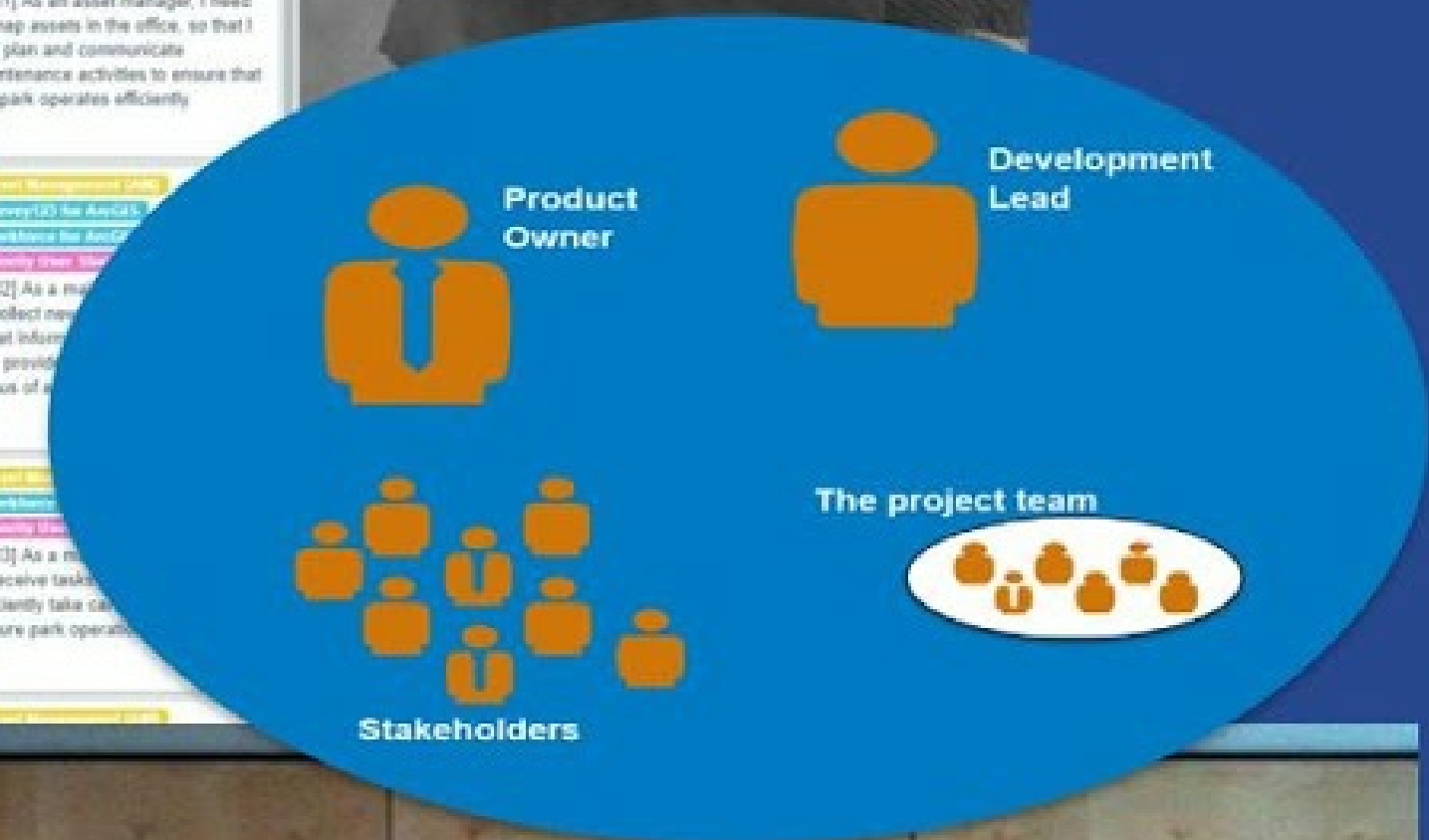
1 Vote

1

2

Plan for Success – Smart Planning

- Planning is a team sport
- Clearly define roles and responsibilities
- Define a methodology and establish a project rhythm
- Avoid unrealistic schedules
- Process for monitoring team performance
- Risk management plan



Requirements, Requirements, Requirements

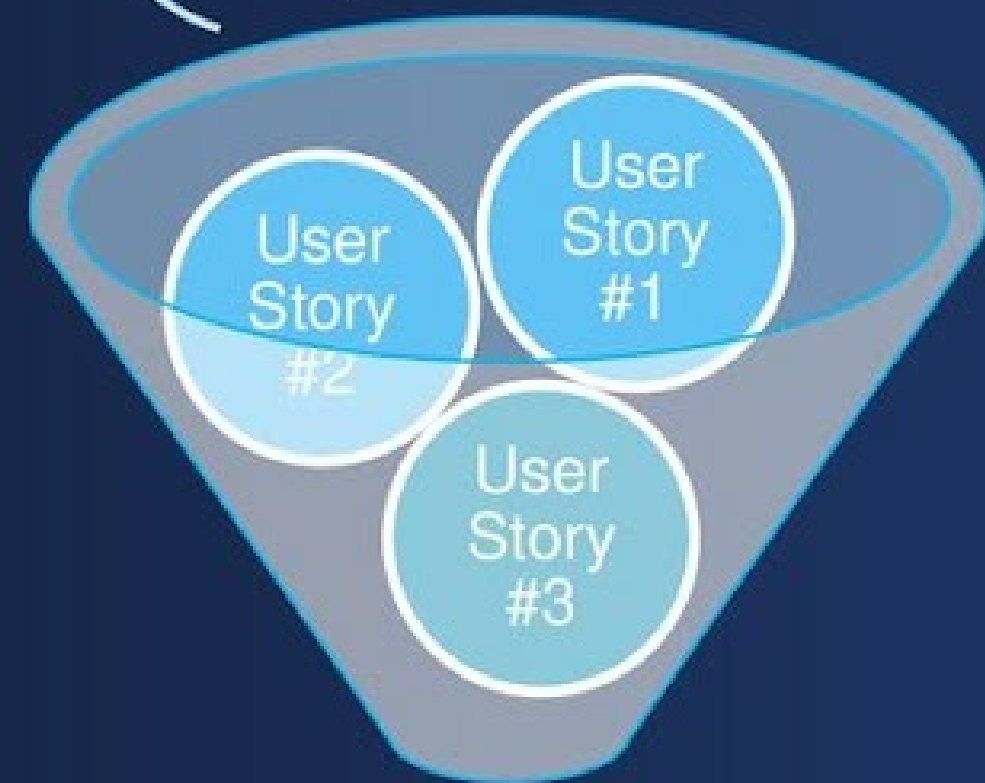
Build the most important things first – use an evolutionary approach

Product Backlog

1		
2		
3		
4		
5		

Requirements

- Who is it for?
- What is the result?
- Why is it needed?



Sprint Plan/Backlog



- Model business workflow
- Move from general to specific
- WHAT not HOW
- Not a long list....
- Provide Traceability

Requirements, Requirements, Requirements

Build the most important things first – use an evolutionary approach

Product Backlog

1		
2		
3		
4		
5		

Requirements

- Who is it for
- What

**Esri Best Practices: How to Run An Agile
GIS Project
Wednesday 2:45 - 3:45 pm Room 209A**

Sprint Plan/Backlog

Tasks

Sprint Cycle
<30 Days

Daily
Review

Working
Increment

Model business workflow

Move from general to specific

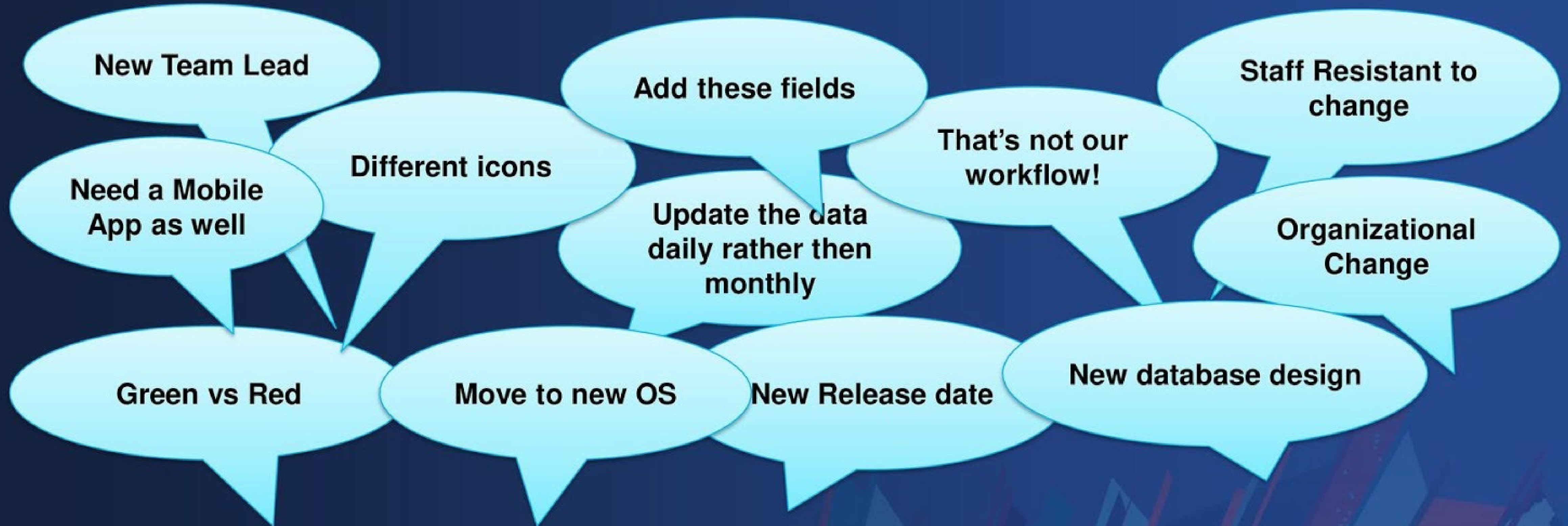
WHAT not HOW

Not a long list....

Provide Traceability

Plan for Change

It will happen...impact on scope, schedule and budget



Plan for Change

It will happen...impact on scope, schedule and budget

New Team Lead

Add the

Staff Resistant to change

Need a Mobile App as well

Different ie

That's not our workflow!

Organizational Change

**Driving GIS Adoption through
Organizational Change Management**

Wednesday 11:00 – 12:00 pm Room 209 A

use date

New database design

Successful GIS Projects

- **The Right Conditions?**

- Vision, value and business objectives
- Stay focused on what is important
- User involvement
- Good people

- **The Right Approach?**

- Plan for success – smart planning
- Requirements, requirements, requirements
- Plan for change

What do you think is the most important?

2 Votes

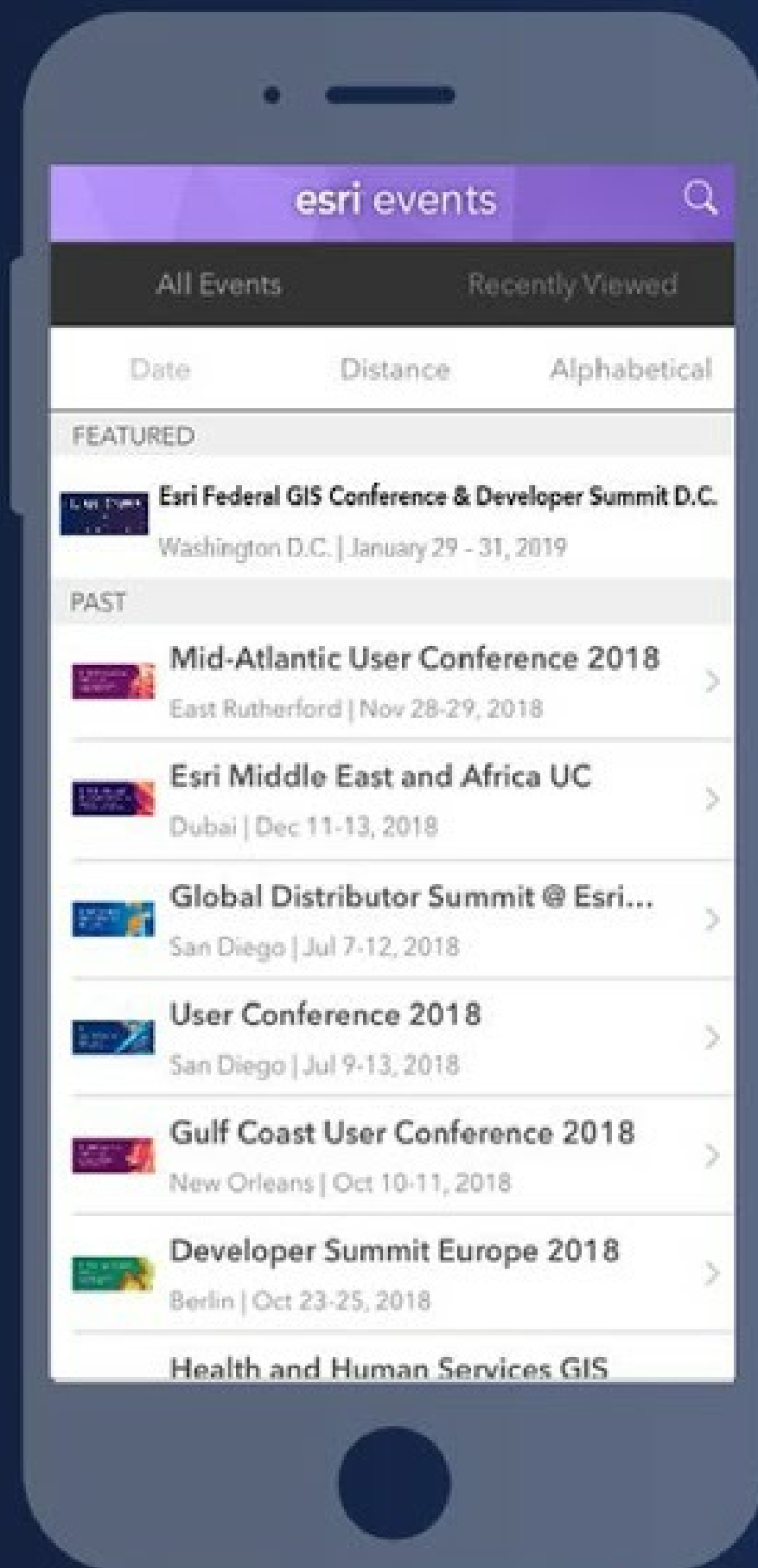
- 1
- 2
- 3
- 4
- 5
- 6

More Technical Workshops @ the Fed Conference

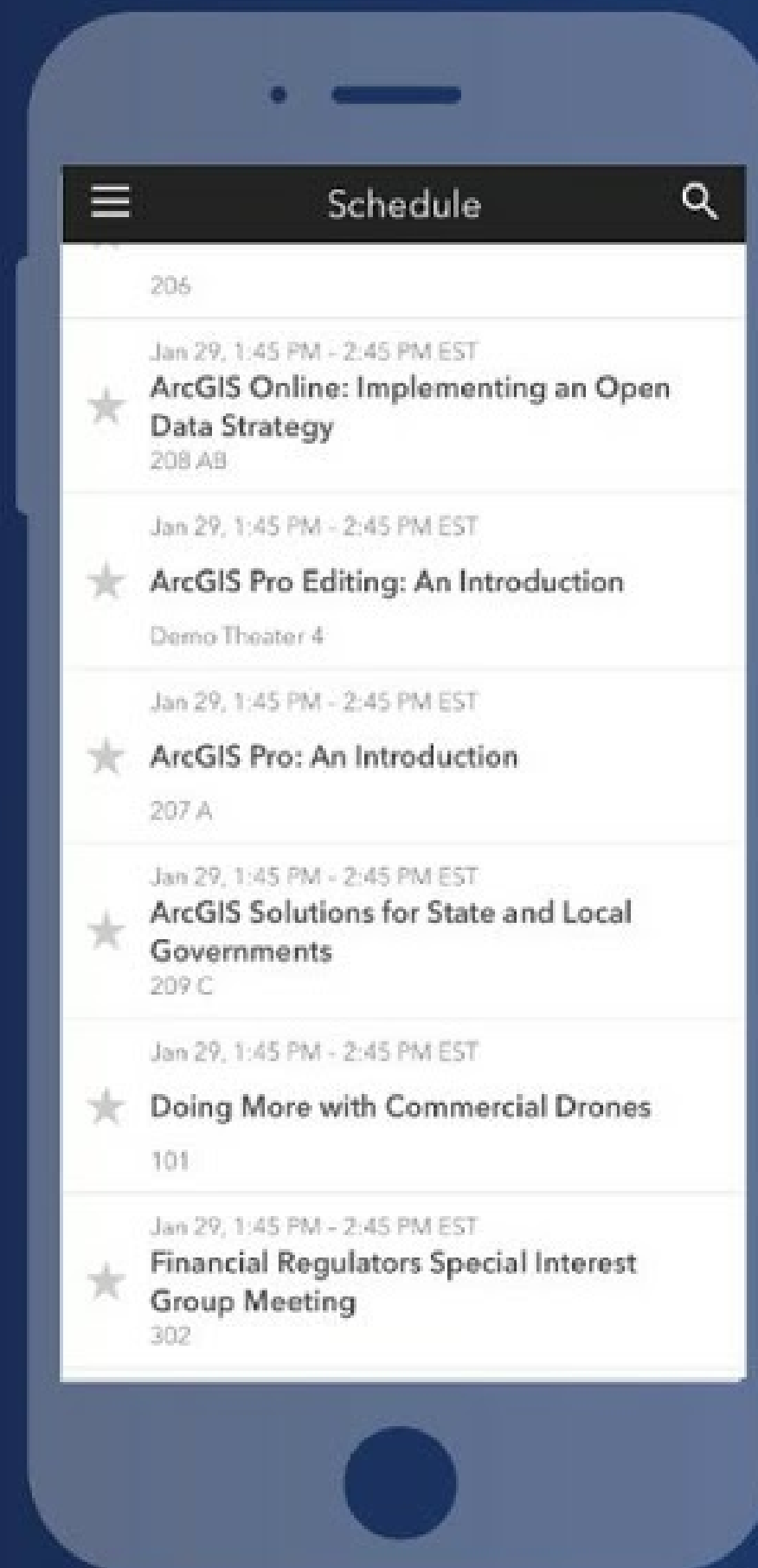
Session	Date/Time	Room
Geospatial Strategy (...Location Dimension)	Wednesday 11:00 – 11:30AM	Implementing ArcGIS Theater
Driving GIS Adoption through Organizational Change Management	Wednesday 11:00 – 12:00	209A
Are You Cloud Ready	Wednesday 1:30-2:00 PM	Implementing ArcGIS Theater
Esri Best Practice: How to run an Agile GIS Project.	Wednesday 2:45 – 3:45 PM	209A
Why Now? Establishing Urgency for Training	Wednesday 2:45 – 3:15 PM	Implementing ArcGIS Theater
Defining and Executing a Geospatial Strategy	Wednesday 5:15 - 6:15 PM	209A
GIS for Leaders: Seven Elements of a Successful Enterprise GIS	Wednesday 5:15 -6:15 pm	209C

Please Take Our Survey on the App

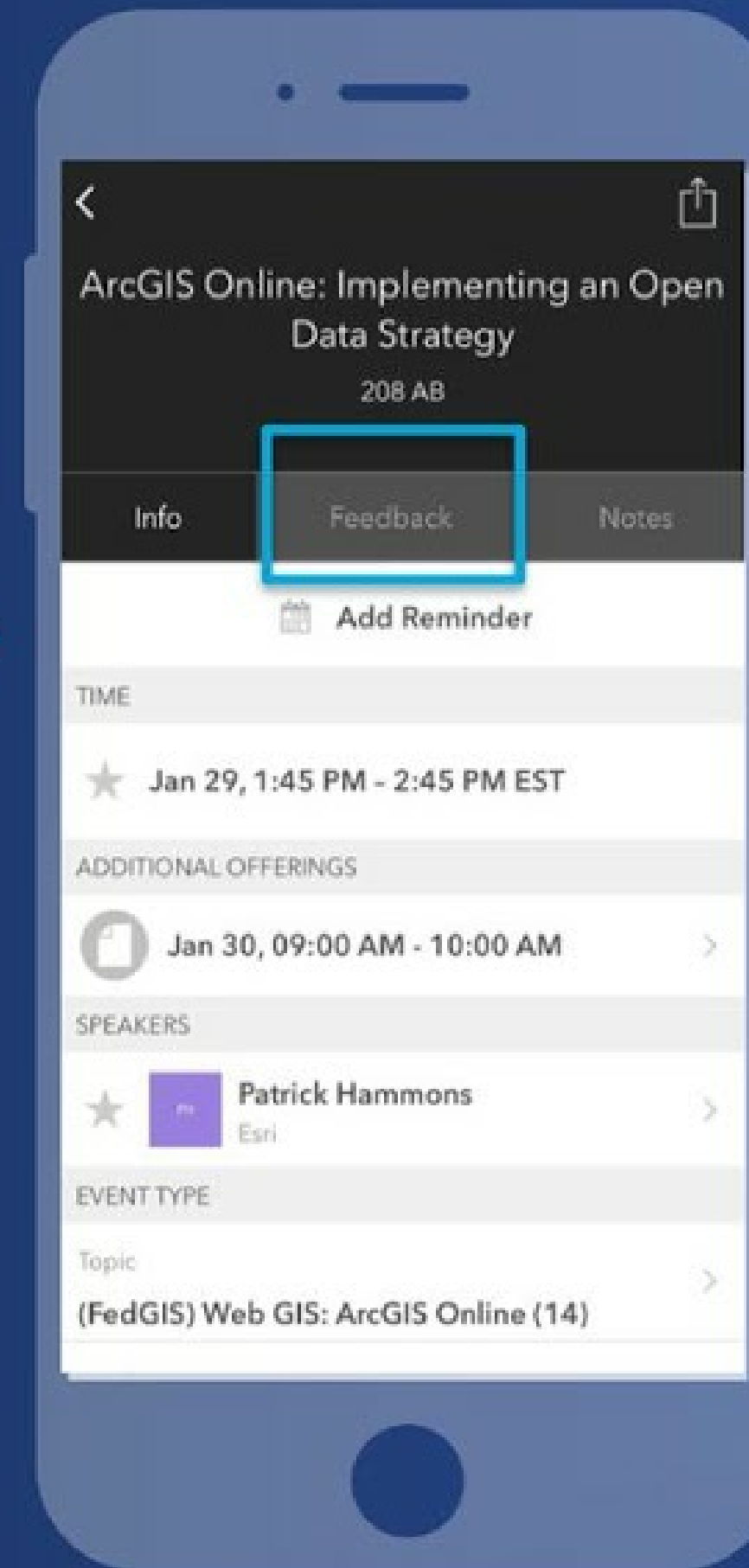
Download the Esri Events app and find your event



Select the session you attended



Scroll down to find the feedback section



Complete answers and select "Submit"



Additional Resources

- ***Software Requirements (3rd Edition)*** by Karl Wieggers, Microsoft Press, 2013
- ***Agile and Iterative Development: A Managers Guide*** by Craig Larman, 2004
- ***The One-Page Project Manager: Communicate and Manage Any Project With a Single Sheet of Paper*** by Clark A Campbell, 2006
- ***Applying UML and Patterns (2nd Edition)*** by Craig Larman, Prentice-Hall, 2001
- ***Use Case Driven Object Modeling with UML*** by Doug Rosenberg and Matt Stephens, Apress, 2008
- ***Agile Development with ICONIX Process*** by Doug Rosenberg, Matt Stephens, and Mark Collins, Apress, 2005
 - iconixsw.com
- ***Software Project Survival Guide*** by Steve McConnell, Microsoft Press, 1997
- ***Writing Effective Use Cases*** by Alistair Cockburn, Addison-Wesley, 2001
- ***The Standish Group*** – standishgroup.com

Additional Resources

<http://www.scaledagileframework.com/>

<https://www.prosci.com/>

<http://alistair.cockburn.us/>

<http://www.iconixsw.com/>

<http://www.pmi.org/default.aspx>

<http://www.thoughtworks.com/insights>

<https://scrumalliance.org/>

Additional Resources

<https://community.esri.com/>

[Launching Your Location Platform: The Esri Guide](#)

[Promoting Your Location Platform: A Change Management Kit](#)

[Administering Your Location Platform: Best Practices and Resources](#)

Print Your Certificate of Attendance

Print Stations Located at L Street Bridge

Tuesday

12:30 pm – 6:30 pm
GIS Solutions Expo
Hall D

5:15 pm – 6:30 pm
GIS Solutions Expo Social
Hall D

Wednesday

10:45 am – 5:15 pm
GIS Solutions Expo
Hall D

6:30 pm – 9:00 pm
Networking Reception
National Museum of
Natural History



Thank You!

Gerry Clancy gclancy@esri.com

Jennifer Vaughan-Gibson jvaughan.Gibson@esri.com



esri

THE
SCIENCE
OF
WHERE