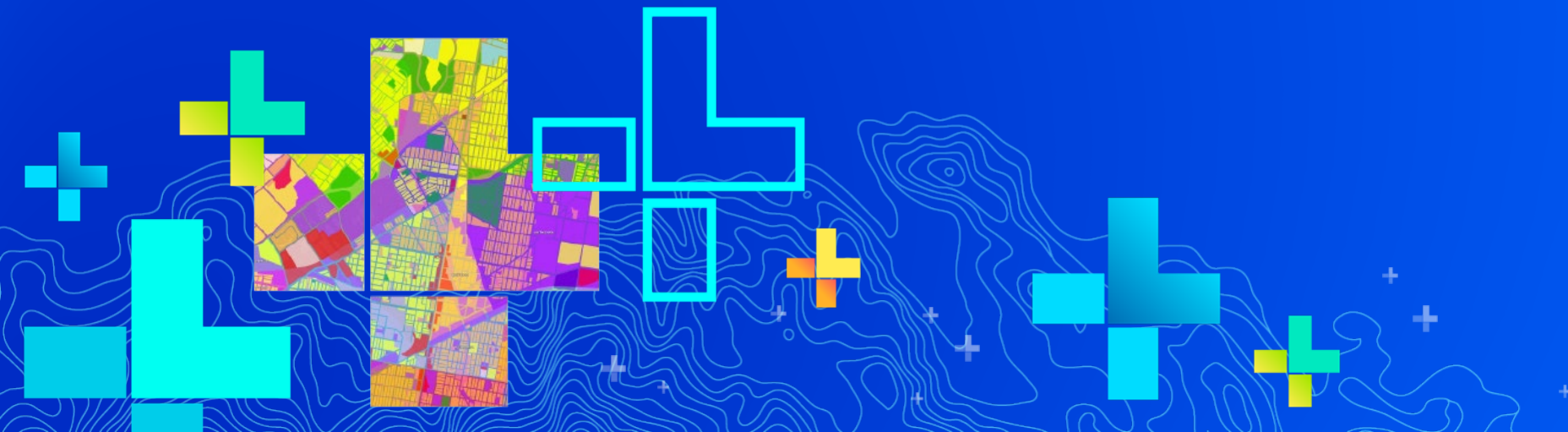


Advance Your Goals with Esri Technical Certification

Aaron Zureick



The information shared in this presentation is
CONFIDENTIAL and MAY NOT BE REDISTRIBUTED.

For details on confidentiality see the Confidentiality clause in your
Esri partnering agreement or the Esri Distributor Agreement.



Certifications bring **value** to...



Individuals



Organizations

Customers

Partners

Distributors

Employees



Program Redesign

Redesign Core Exams

- Alignment with product messaging and customer workflows
- Reduction of cognitive complexity of desktop entry exam
- Professional exams alignment
- Time based development (18-24 month release cycle)
- Alternative delivery options

Specialty Exams

- Smaller, focused concepts
- Updated developer content
- Dependent on core exam



Latest Exams

DESKTOP

ArcGIS Desktop Entry

ArcGIS Desktop Associate

ArcGIS Desktop Professional

ENTERPRISE

Enterprise Geodata Management Professional

Enterprise Administration Professional

SPECIALTY

ArcGIS Online Administration Specialty

ArcGIS API for JavaScript Specialty (5/28)

Additional specialties under consideration

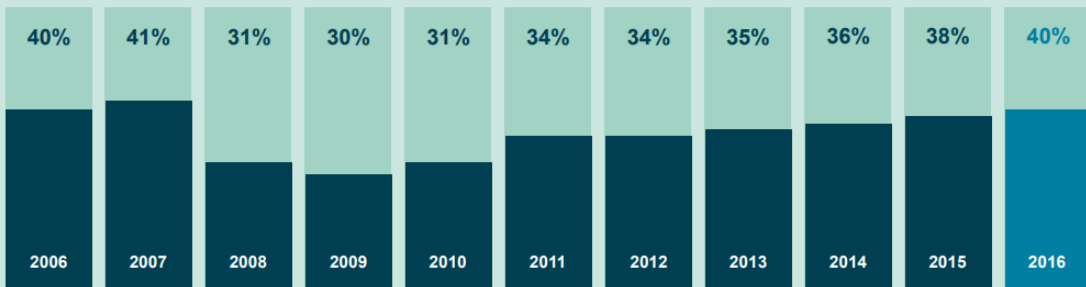


Growing Global Skills Gap

Global Skills Gap

2016/2017 ManpowerGroup® Talent Shortage Survey

Globally, employers report the **HIGHEST TALENT SHORTAGE** since 2007



40% of employers globally are having difficulty filling positions

<http://manpowergroup.com/talent-shortage-2016>

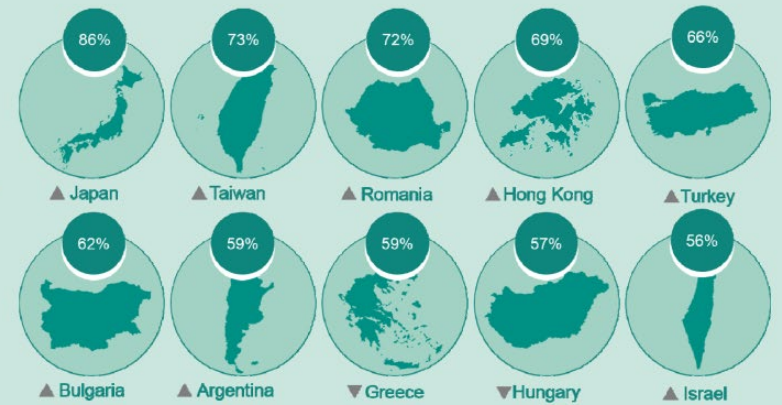


Global Skills Gap

2016/2017 ManpowerGroup® Talent Shortage Survey

Countries where employers are having the **MOST DIFFICULTY** filling roles

<http://manpowergroup.com/talent-shortage-2016>



▲ More than previous year
▼ Less than previous year



How Important are Certifications to Organizations?

94% [of IT decision-makers] reported that their certified team members bring added value above and beyond the cost of certification.

How Important are Certifications to Organizations?

Better Recruits

Bid Advantages

Better Staff Productivity

Higher Quality Services Delivered

More Successful Engagements

Individual Value



Pearson VUE 2017 Value of IT Certification Survey

Results
summary



Value of Esri Technical Certification



3,500 issued



10,500 views



2,600 shares

Digital Badging - Enhance Your Personal and Organizational Brand

Esri Training Matters



The Value Case for Certification

Blog Post created by sboden-esristaff on Sep 8, 2017

Like • 7 Comment • 0

By Aaron Zureick, Esri global training program manager

The Esri Technical Certification program launched in January 2011 with one primary objective—to establish a means of recognizing and validating ArcGIS expertise. The program now offers nine exams, across three domains and three levels to span the breadth of the ArcGIS platform and associated user roles. More than 6,000 certifications have been awarded to



ARCNEWS

The Value of Esri Technical Certifications, Supported Organizationally

The Salary Survey 75

This year's Salary Survey included more than 300 certifications. Globally, people who earned more IT certifications... (text continues)

CERTIFICATION	US\$	US\$	US\$
64) Microsoft Office Specialist	\$94,730		
65) Microsoft Office Specialist	\$92,920		
66) Microsoft Certified Solutions Associate: Windows 10	\$90,180		
67) Cisco Certified Entry Networking Technician (CCENT)	\$88,710		
68) Microsoft Certified Solutions Associate: Office 365	\$88,060		
69) SAS Certified Advanced Programmer	\$87,050		
70) SAS Certified Base Programmer	\$86,560		
71) Esri Enterprise Administration Associate	\$86,040		
72) Esri ArcGIS Desktop Associate	\$78,970		

Certification Magazine Spotlight

Certification Success Stories Gallery


A chronicle of achievements.

Has certification helped you achieve a goal? [Share Your Story](#)

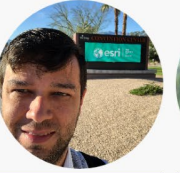
Search Success Stories

Viewing: 32 Results

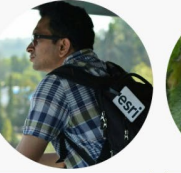
CERTIFICATIONS Viewing All SORT Recently Added



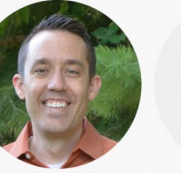
Justin Madron
GIS Project Manager & Analyst




Rafael Gomes
Technical Director



Ajitkumar Babar
Analyst



Michael Duncan
GIS Analyst



George Thompson
Consultant

What's Next?

Stay Current

<http://www.esri.com/training/main/certification>

Stay Connected

Email certification@esri.com

Join us on GeoNet and LinkedIn

Visit us at the Lifelong Learning area

Share Your Story and Achievement



esri ArcGIS Industries About Support

GeoNet
The Esri Community

Home My News Browse GeoNet Communities ArcGIS Ideas GeoNet Resource Hub

All Places > Implementing ArcGIS

Follow Actions

Overview Meet The Team UC 2018 Activity Content People Subspaces Calendar Reports

Welcome to the Implementing ArcGIS Community!

Implementing ArcGIS is a public community group created by Esri for the ArcGIS community. Here, subject matter experts share tips and advice on best practices, address questions, and engage in discussion on topics challenging GIS professionals.

Gain from the experience of these teams by asking your questions, share your experience by offering advice, and follow this community to stay connected.

ASK IMPLEMENTING ARCGIS

Type your question

Ask my question

ANSWERED QUESTIONS

No questions have been answered yet.

RECENT UPDATES

- Inspire Your Workforce to Adopt GIS
- Esri Training Consultants will help you develop and launch your Workforce Development Plan
- Training's Impact on Project Success
- ArcGIS Monitor and Operational Support

Strategy & Planning

Architecture & Security

Geodata Engineering

Configuration & Integration

Workforce Development

Operational Support

Meet Our Team

Thought leaders sharing best practices on Implementing ArcGIS throughout the year

esri ArcGIS Industries About Support

GeoNet
The Esri Community

Home My News Browse GeoNet Communities ArcGIS Ideas GeoNet Resource Hub

All Places > Implementing ArcGIS

Actions

Overview Meet The Team UC 2018 Activity Content People Subspaces Calendar

Log in to follow, share, and participate in this community.

Scott Whittington
Operational Support

Michael Green
Strategy & Planning - Change Management

Garrett Graham
Operational Support

Anna Sokol
Strategy & Planning

Christie Pleiss
Strategy & Planning

Matt Bottenberg
Geodata Engineering

Carsten Piepel
Configuration & Integration

Guy Noll
Geodata Engineering

Jeff DeWeese
Architecture & Security

Pinde Fu
Configuration & Integration

Home | Top of page | Help

go.esri.com/ImplementingArcGIS

DISCOVER

Spatial Analytics

TAP YOUR BADGE HERE



Tap your badge to receive an email containing these items:

- Understand spatial relationships and patterns with spatial analytics.
- Read these spatial analytics case studies.
- Learn more about World Geocoder for ArcGIS.
- Learn more about StreetMap Premium for ArcGIS.
- Learn more about ArcGIS Business Analyst.
- For test bullet point
- For test bullet point
- For test bullet point - (max 8 bullet lines)

Have you opted out of Esri emails?
If so please visit esri.com/UCD/privacy
to enter your email address and opt into these emails.

EMAIL

Subject: Learn more about Esri's support & services from the Esri Partner Conference and Developer Summit

Hello %%first_name%%,

Thank you for visiting the Support & Services area at the Esri Partner Conference and Developer Summit. Below is the information you requested **about finding resources and getting help from Esri Services.**

- [Explore Esri's large collection of ArcGIS learning resources](#)
- [Find answers online with Technical Support resources](#)
- [Get tips to achieve an Esri technical certification](#)
- [Discover the three-step planning process for strategic workforce development](#)
- [Drive technology adoption using people-focused change management](#)
- [Explore the many ways the Esri Services team can help you](#)
- [Join & connect with Esri staff and the GIS community interested in ArcGIS Implementation best practices on GeoNet](#)

Value of Esri Technical Certification

Questions

