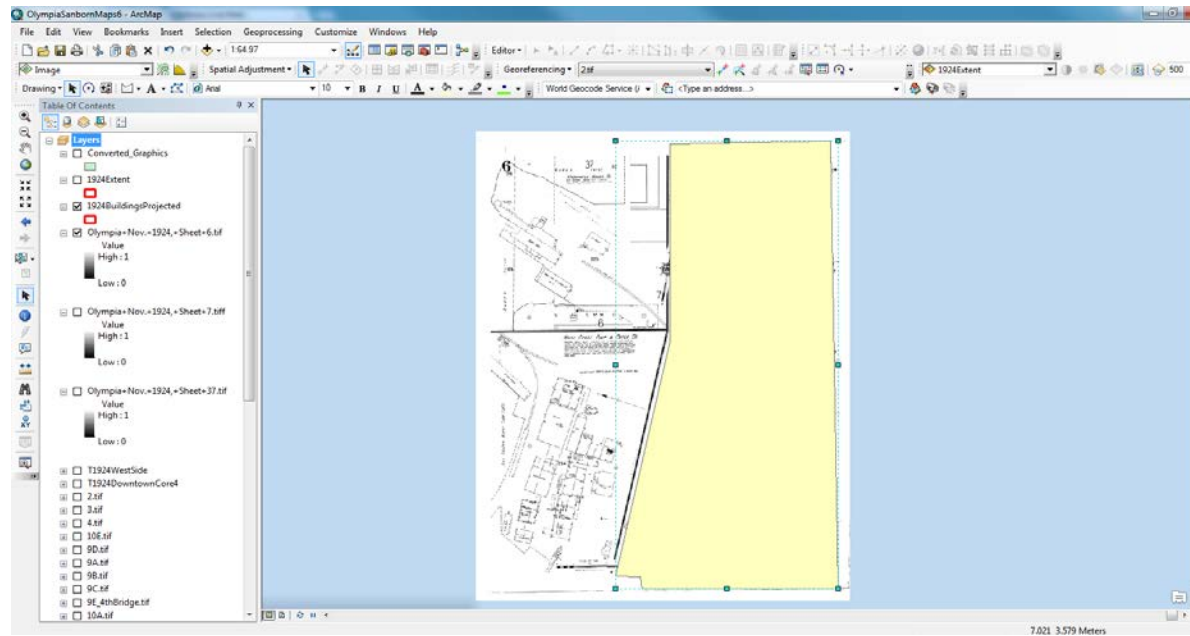
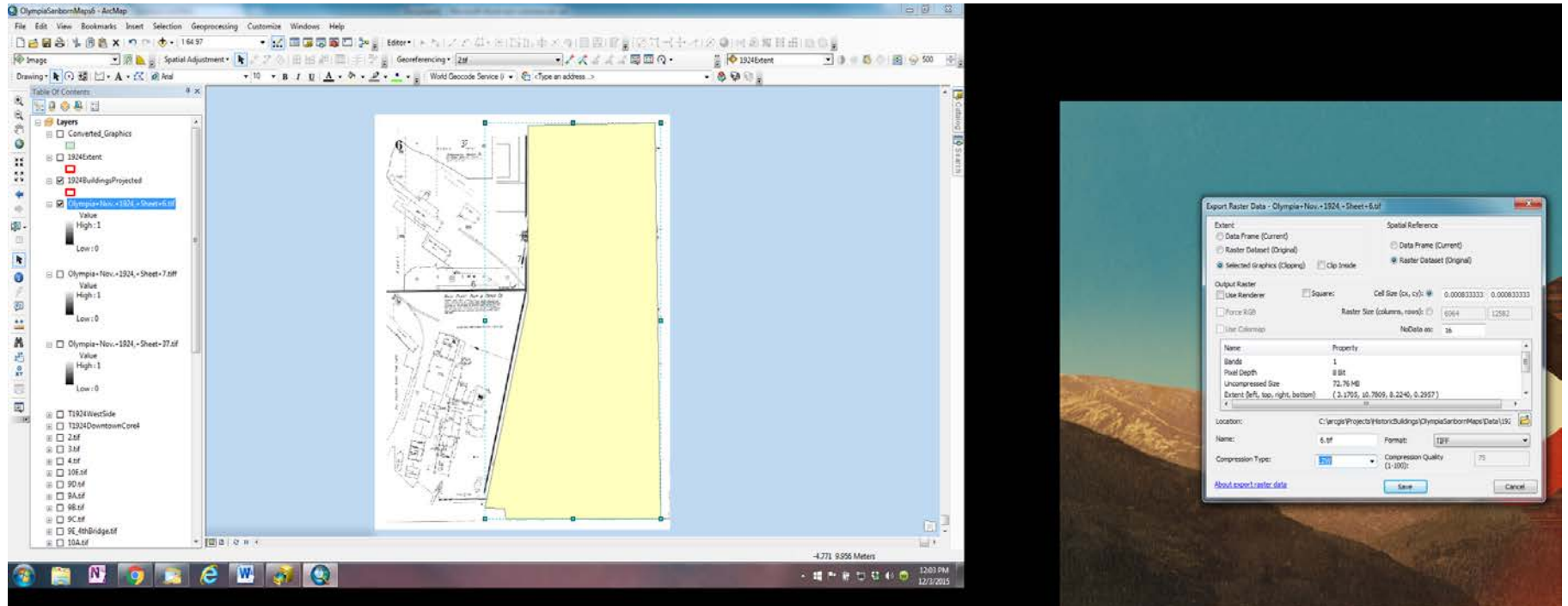


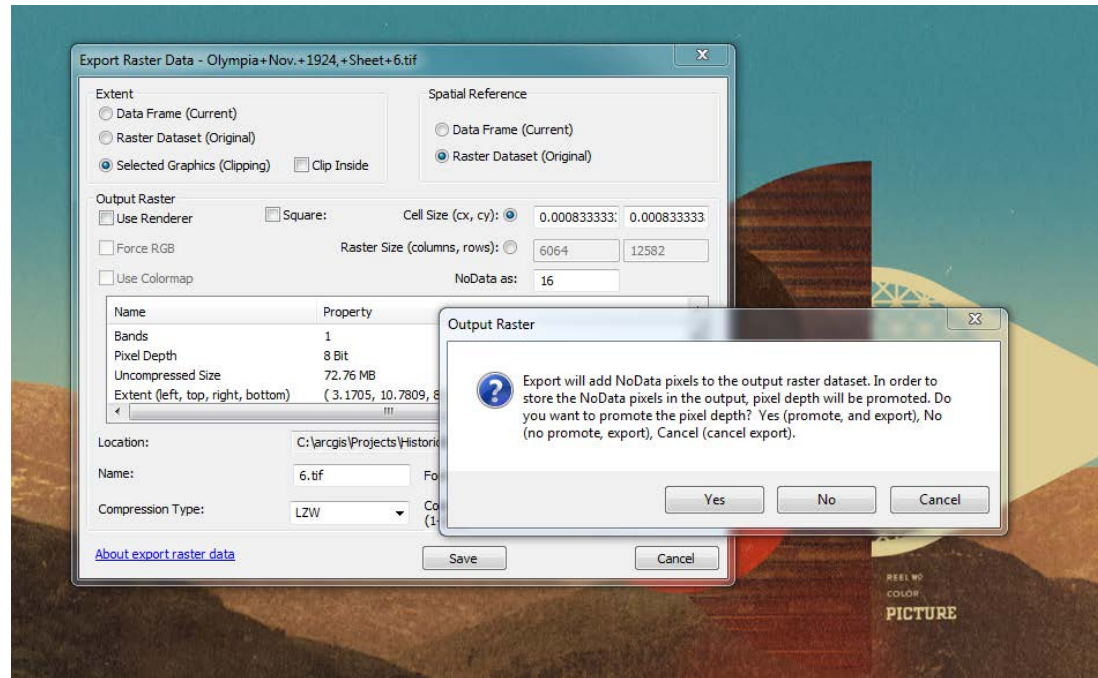
Step 1: I use a polygon graphic over the area I want to clip from the raster. Please note that when the graphic is selected, the light blue lines and vertices extend outside of the polygon I created.



Step 2: I right click raster and go to “Export Data.” I make sure that I use the “Selected graphics (clipping)” radio button. Please note, that the radio button is not available, unless the graphic is actually selected.



Step 3: I get a chance to promote the NoData pixels. I have been choosing not to do this, because I found it makes the image much bigger and with poorer resolution.



Step 4: I “Export Data” using those options and I get the clipped raster, which is the size of the blue lines and vertices, and not the shape of the polygon that I wanted. Neither the black line nor anything to the left should be showing.

