

JavaScript API 4.0 – The next generation

Christine Wiltawsky

29.06.2016



The next Generation APIs

- + Redesign of the JavaScript API
 - > new programming patterns
 - > significant changes to the object model
 - > substantial overhaul of the API
- + 2 releases side by side: 4.x and 3.x



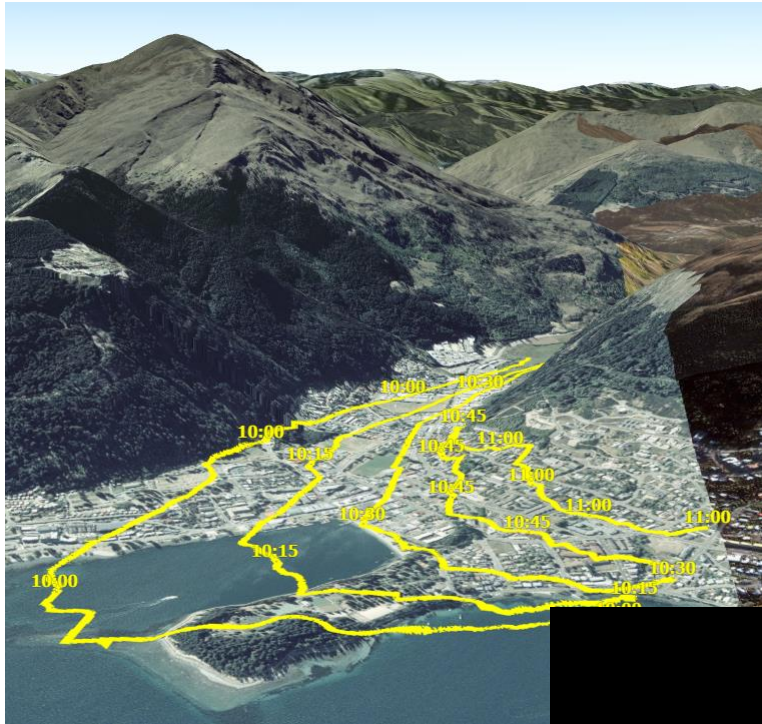
Reasons for the redesign

- + Consistent API
- + Modern programming patterns
- + Use other JavaScript Frameworks
- + Use modern browsers
- + Better user and developer experience

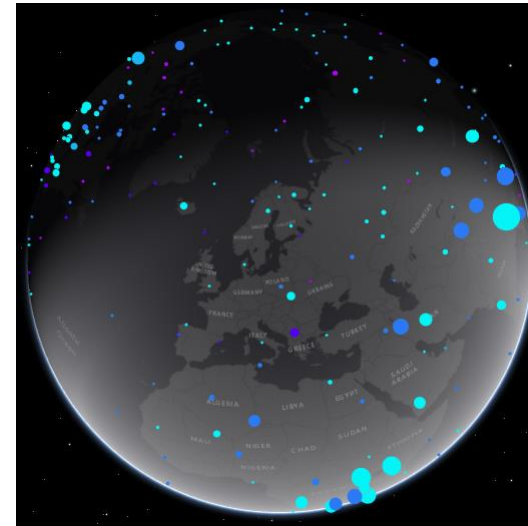


CLEAN DESIGN

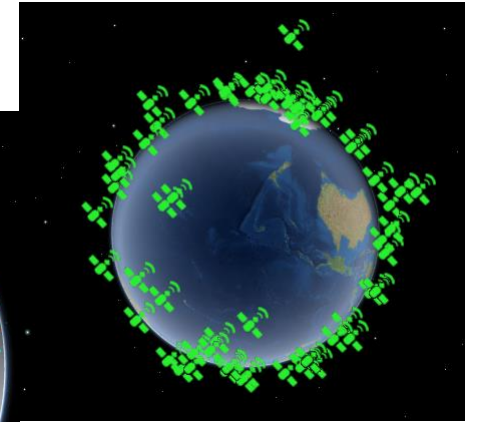
3D



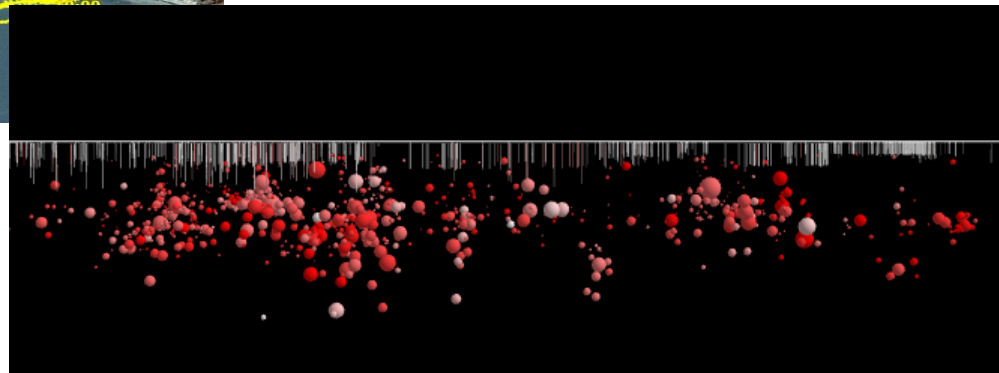
WebScene



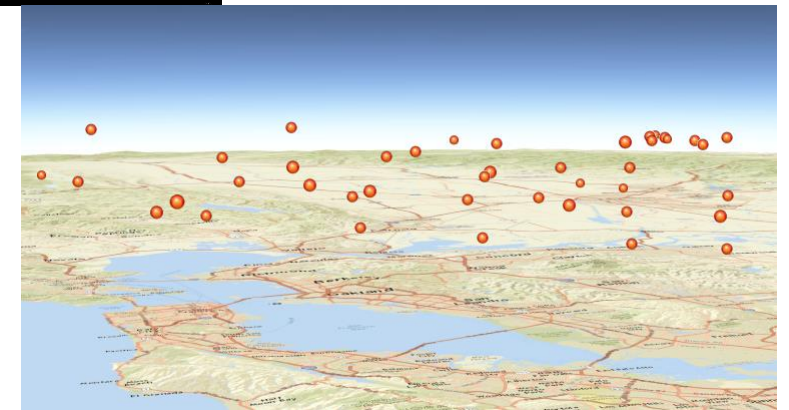
SceneLayer



Own data



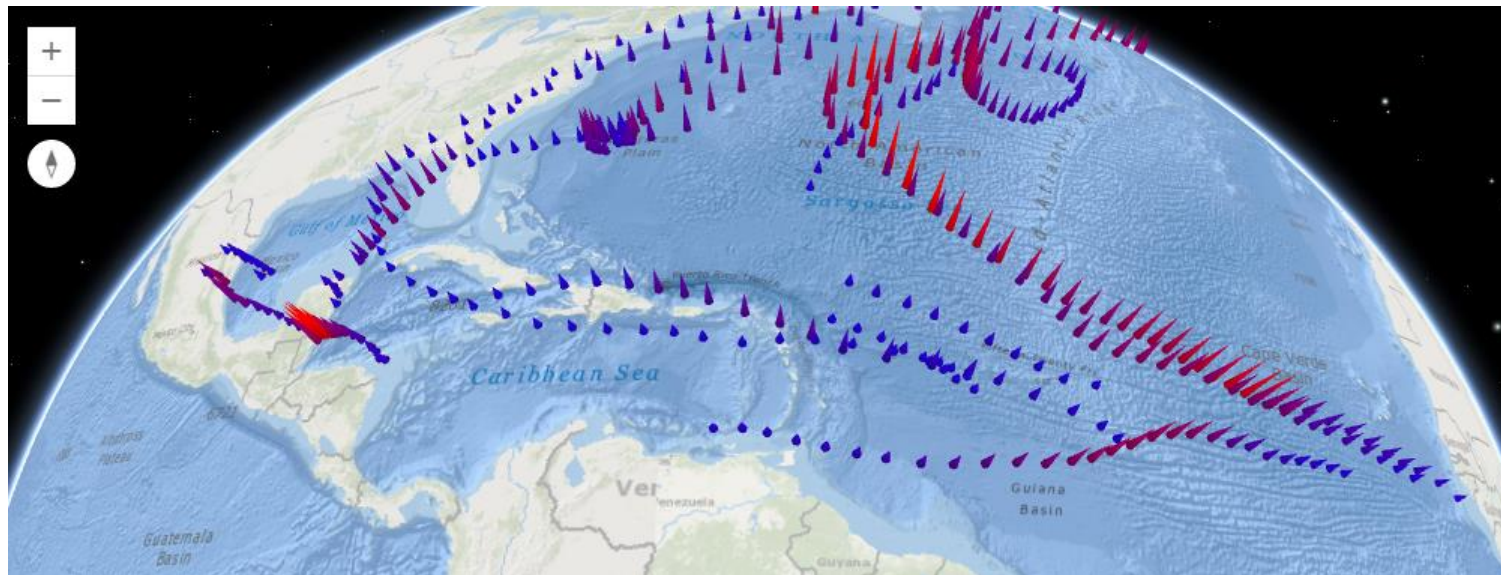
Local Scene



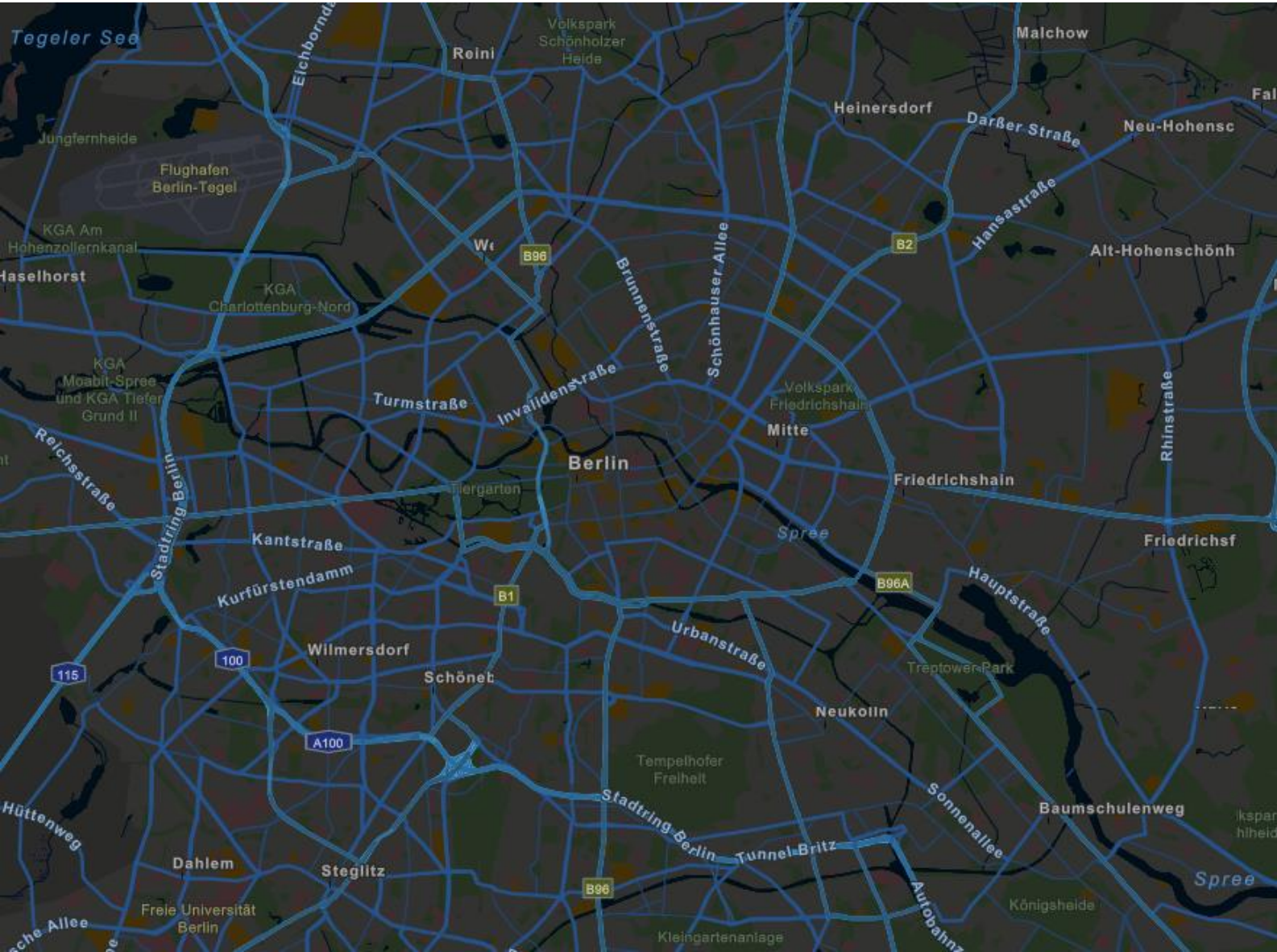
2D Layer

Visualization

- + Thematic and realistic visualizations in 2D and 3D



Vector Tiles



Local Geometry Engine

+ client-side analysis functions



Popup

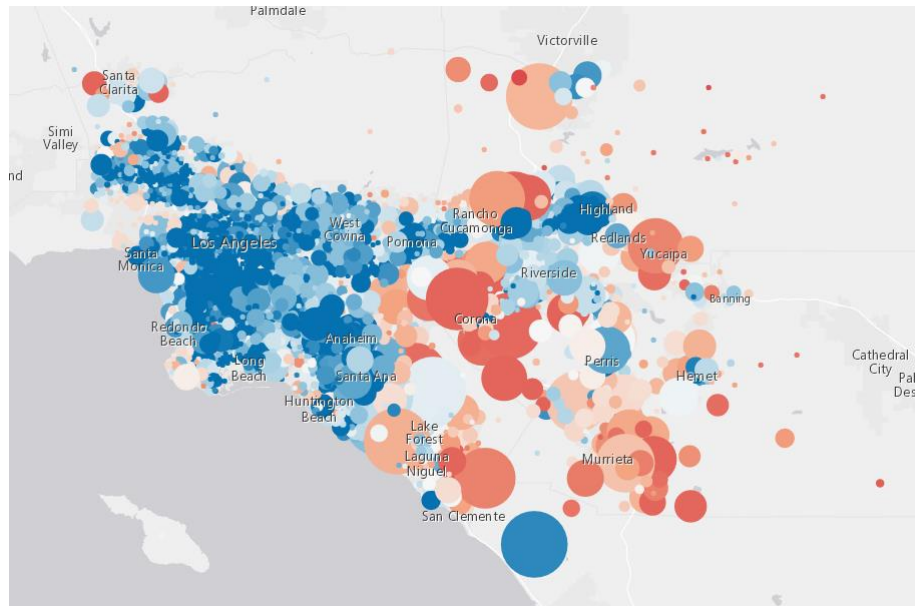


App

Code

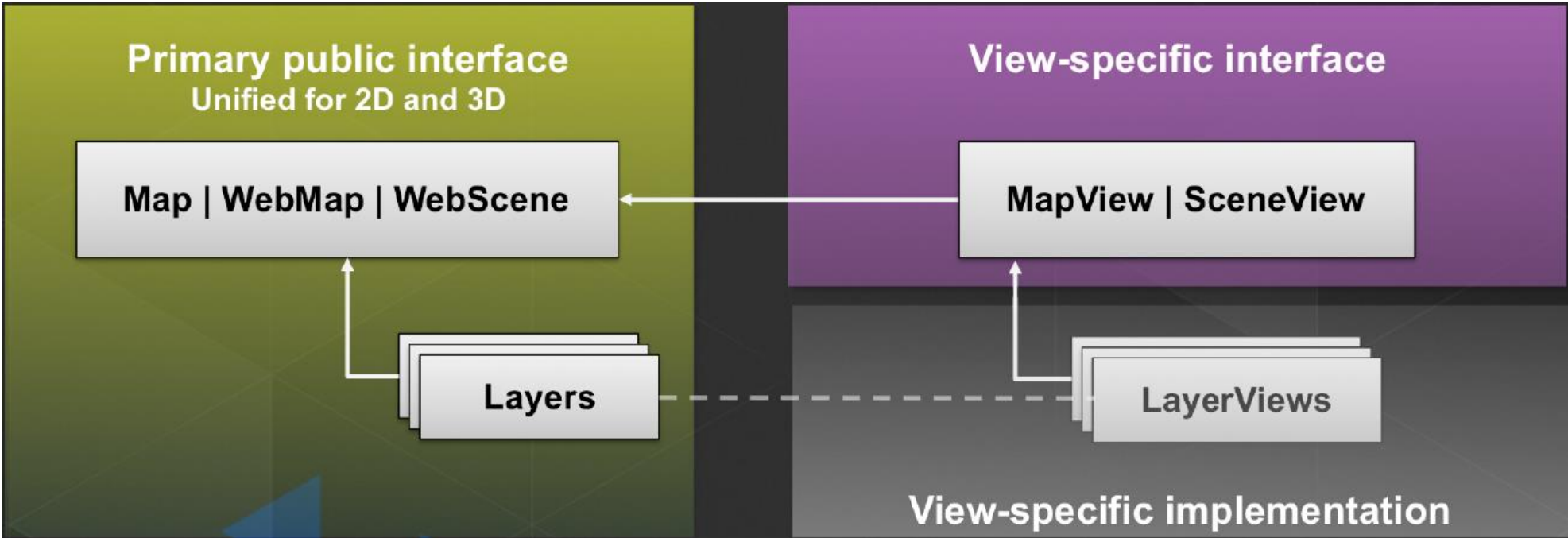
Portal API

- + Released: Read Items and Informations
- + Coming soon: create, delete and update of items



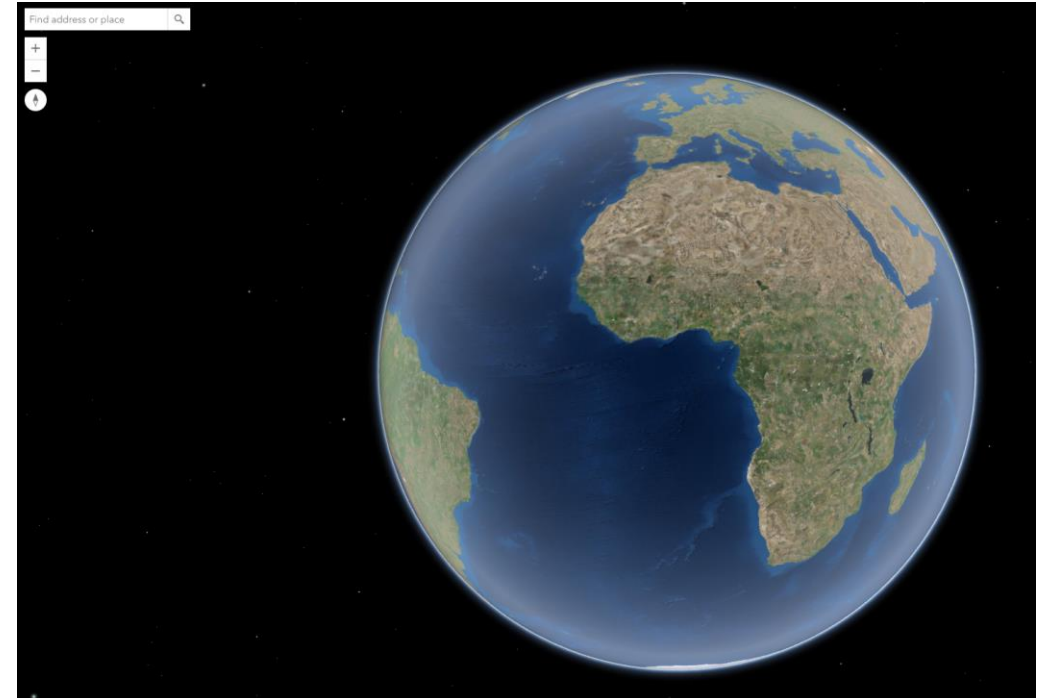
^ esri/portal
Portal
PortalFolder
PortalGroup
PortalItem
PortalQueryParams
PortalQueryResult
PortalUser

MapView and SceneView



Widgets

- + ViewModel and View
 - > Easy to style widgets
 - > Code of views is on GitHub
- + Widgets for 2D and 3D
- + View UI for placing components into corners



System requirements

- + WebGL - a web technology standard for rendering 3D graphics
- + 2D: Modern browsers and IE11 is supported
- + 3D: supported in desktop web browsers that support WebGL
- + Hardware requirements for 3D
 - > minimum of 2 GB system memory
 - > a video graphics card that supports WebGL

Which version?



Version 4.0

Want to build a 3D web app with the next generation JavaScript API?

[Go to 4.0](#)

Choosing a version

Need to build a full-featured 2D web app with capabilities such as editing and support for all existing layer types?






[Go to 3.17](#)

Choosing a version ▶

ArcGIS for Developers

developers.arcgis.com

ArcGIS for Developers Features Documentation Community

Search      Lars

The Power of Location

ArcGIS is a mapping platform accessible to developers. It offers an effective way to create and manage geospatial applications. Regardless of your development experience, build web, mobile, and desktop apps that incorporate mapping, visualization, analysis, and more.

JavaScript API Runtime SDKs (iOS, Android, .Net...) Configurable Apps & App Builders



Building Apps

Use ArcGIS to build and deploy apps with spatial capabilities that will inspire your users.



Extending the Platform

Extend ArcGIS products with your own custom functionality and script common workflows.



Accessing Content & Services

Access to a variety of authoritative and curated content and services for use inside your apps.