



# Investigations in Demographics, Consumer Behavior, and Businesses with Community Analyst / Business Analyst Web

Joseph J. Kerski, PhD, GISP, Esri

[jkerski@esri.com](mailto:jkerski@esri.com) • [en.wikipedia.org/wiki/Joseph\\_Kerski](https://en.wikipedia.org/wiki/Joseph_Kerski)

Daily geo-dose: [twitter.com/josephkerski](https://twitter.com/josephkerski)

5,000 geo-related videos: <https://esriurl.com/ouearth>

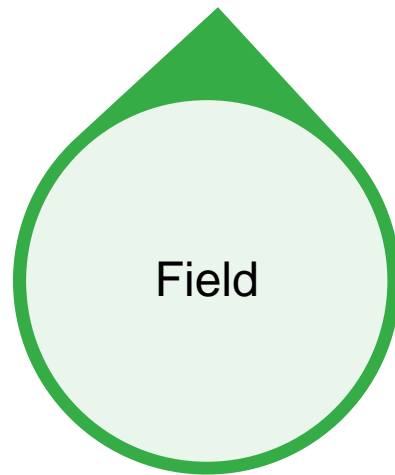
Data book and blog: [spatialreserves.wordpress.com](https://spatialreserves.wordpress.com)

# Workshop Overview

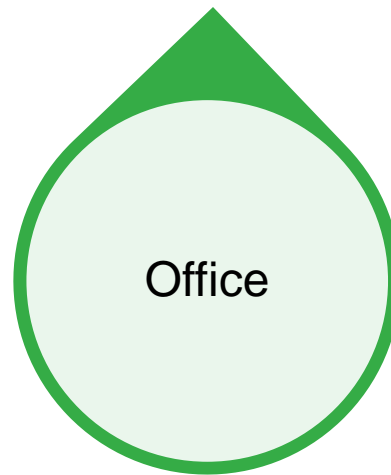
- Introduction to Community Analyst / Business Analyst Web
- Why teach and do research with Community Analyst / Business Analyst Web
- Demographic Analysis
- Consumer Preference Analysis
- Business Location Analysis
- Discussion
- Wrap-up

# What is Community Analyst / Business Analyst Web?

- CA/Business Analyst Web is a Web-based **application**. It is part of the ArcGIS platform. **Apps** can be grouped as follows:



- Collector
- Explorer
- Survey123
- More...



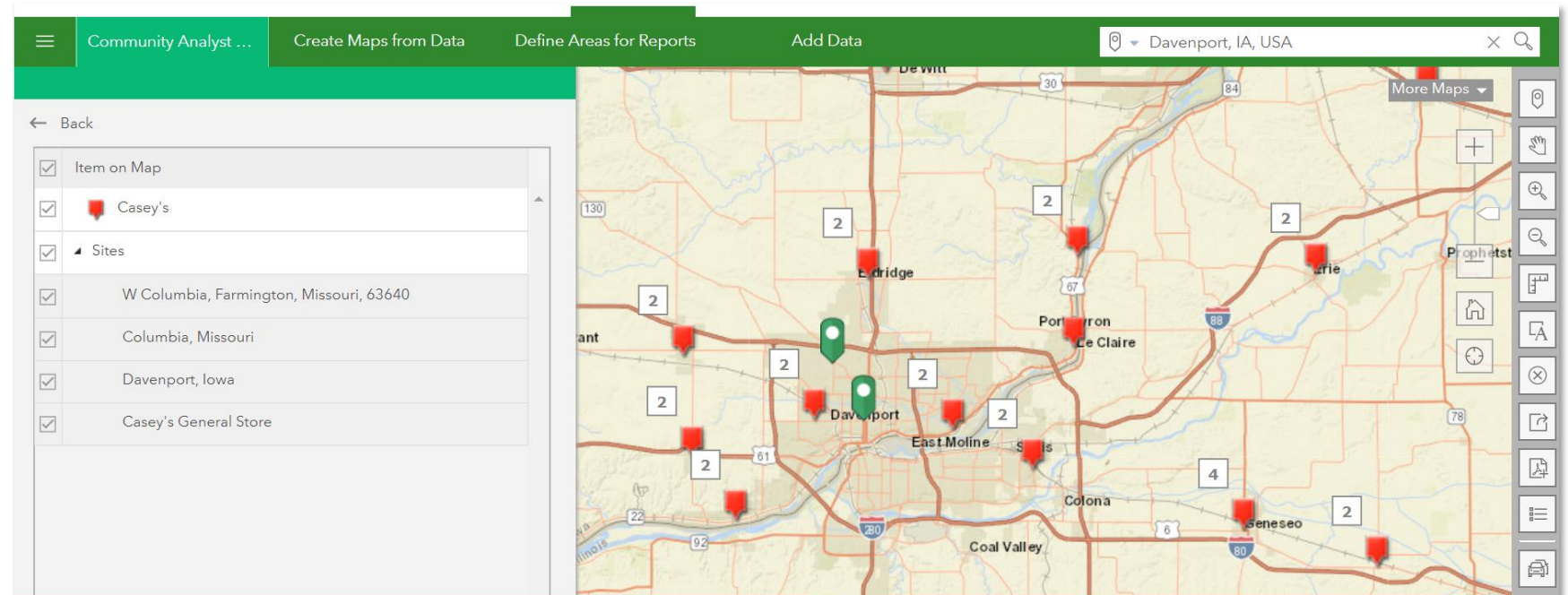
- Esri Maps for Office
- Business Analyst Web
- Community Analyst
- ArcGIS Earth
- ArcGIS Pro
- More...



- Crowdsense Reporter
- Story Maps
- ArcGIS Open Data
- Photo Survey
- More...

# What is CA/Business Analyst Web?

- CA and Business Analyst Web (BAW) is a Web-based **application** that allows people to view and analyze demographic and third-party sources of data to better understand the overall community in question and make better policy decisions.
- CA/BAW contains--(1) data; (2) maps; and (3) tools.



# Why teach and do research with CA/Business Analyst Web?

- 1. No GIS prerequisite skills necessary (helpful but not required). Thus provides an excellent toolkit for colleagues in your own discipline who are not currently using GIS, **and** for colleagues in other disciplines (in particular, sociology, business, and health).
- 2. Included in Esri free school software bundle, and in university enterprise wide licenses.
- 3. Run entirely online; nothing beyond a web browser needed.
- 4. Offers the ability to quickly and easily analyze data: Creating choropleth maps, charts, graphs, and infographics; creating buffers and routes, more; with intriguing analysis tools that exist in no other product.
- 5. Offers the ability to move data **from** ArcGIS Online and **to** ArcGIS Online.
- 6. Wide variety and volume of data – 1000s of businesses, consumer behavior, and detailed **one-stop** demographic data. For **multiple** countries.
- 7. Excellent for teaching **and** research.

# Accessing CA/Business Analyst Web

- You obtain access through your ArcGIS Online account: [www.arcgis.com](http://www.arcgis.com)

In that account, your organization administrator needs to make sure you have access to CA or Business Analyst Web.

You need a Level 2 membership as Administrator, Publisher, or User. The Publisher or Administrator role is required to be able to create new projects - in the User role, many functionalities in the app will be accessible to you only if others in your organization have shared project(s) with you.

Home Gallery Map Scene Groups My Content My Organization

## Manage Product Licenses for Acme Inc.

MY ORGANIZATION ArcGIS Pro **Additional Products**

Product	Business Analyst web app	Drone2Map for ArcGIS
Licenses	5	5
Available	4	3

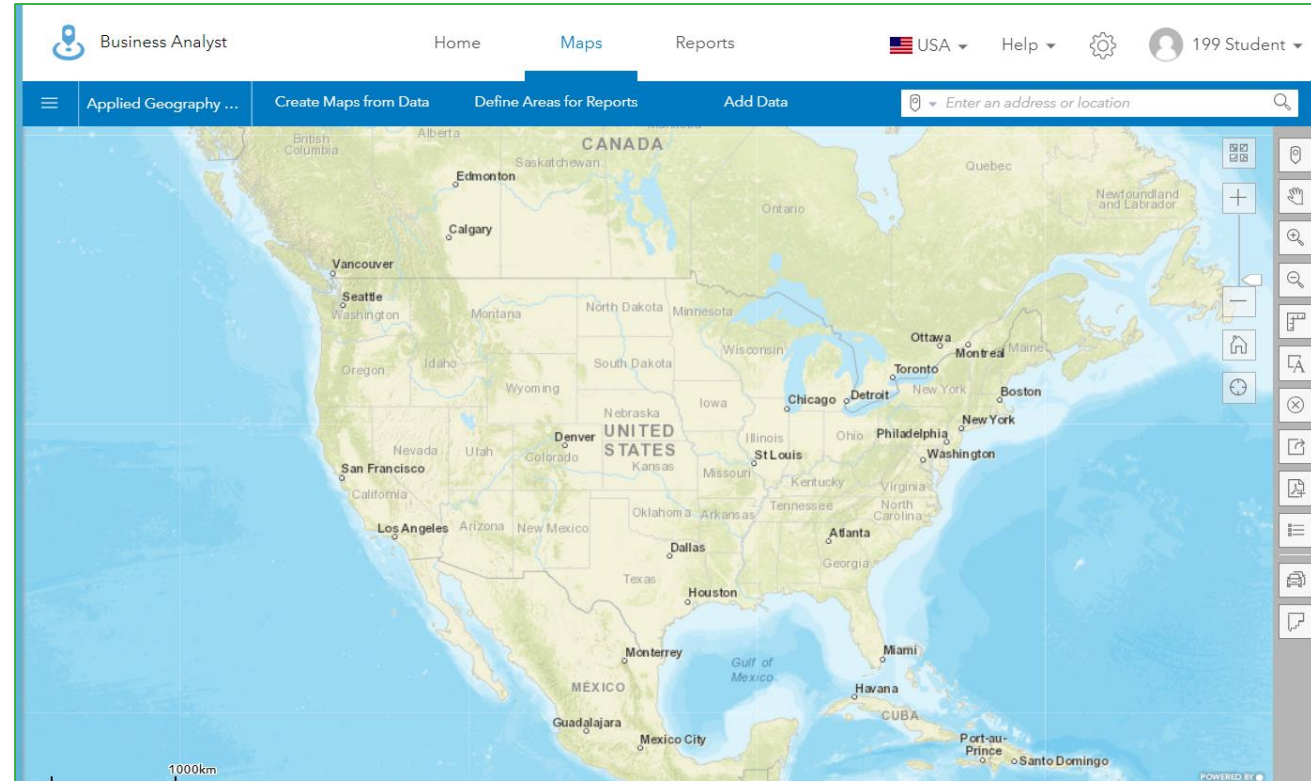
Members [SELECT ALL](#) Search by Name

Click to select a member.

Name	Username	Licensed for
John Doe	john_doe	2 Products
Jack Smith	jack_smith	1 Product
Mary Jones	mary_jones	Configure licenses
Jane Johnson	jane_johnson	Configure licenses
Jack Jones	jack_jones	Configure licenses

# Logging into CA/Business Analyst Web

- You log into BAW using this URL and with your ArcGIS Online organizational account credentials:  
<https://bao.arcgis.com>  
<https://communityanalyst.arcgis.com>
- If you don't have an ArcGIS Online account, get a free CA/BA Web trial here: <https://www.esri.com/en-us/arcgis/products/arcgis-business-analyst/trial>



# What can you do with CA/Business Analyst Web? Selected Activities

- 1. Analyze demographic data: Color coded maps, filters.
- 2. Illustrate multi-variate analysis.
- 3. Analyze consumer behavior.
- 4. Create reports and infographics.
- 5. Analyze business locations.
- 6. Create drive time buffers.
- 7. Move data back and forth between BAW and ArcGIS Online.

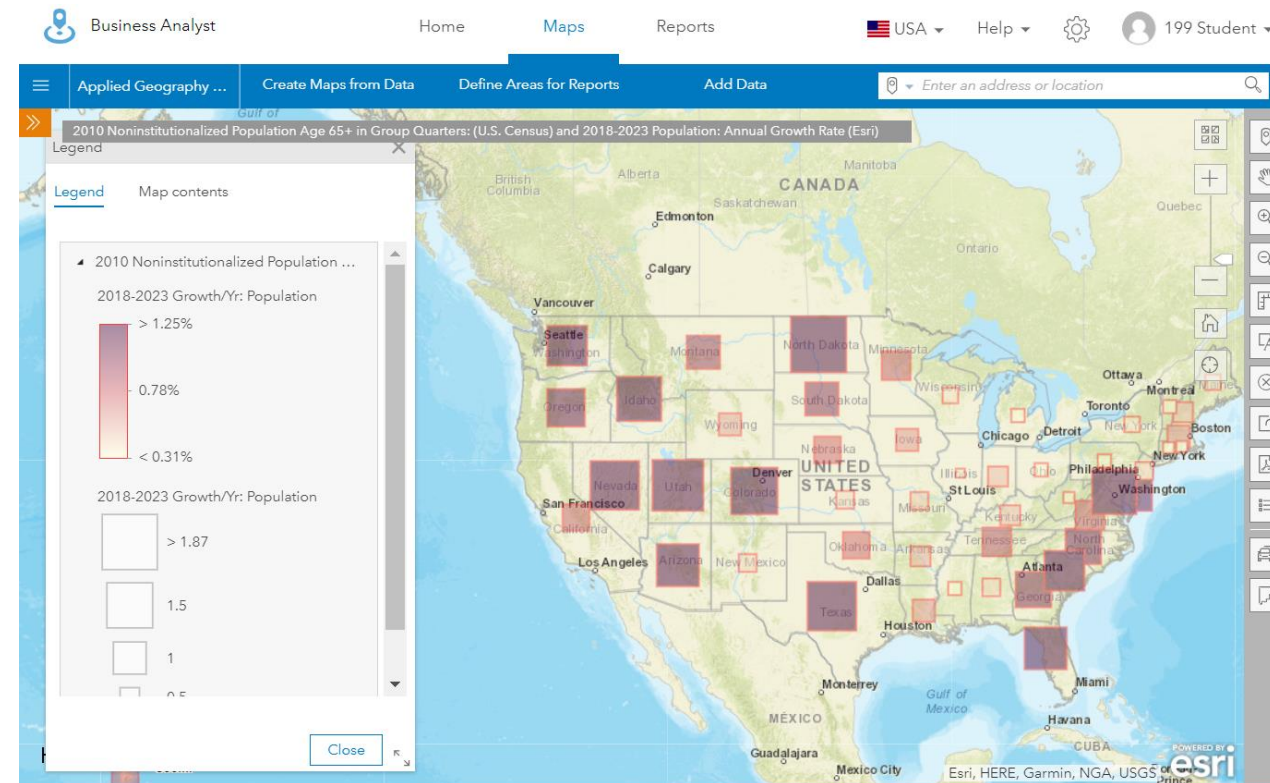


# Activity 1: Create Maps from Data

- 1. Create maps from Data > Color-coded maps > Population, annual growth rate.

## Discuss:

- # vs Index
- Scale and locking scale
- Style, legend, classification method
- Data table, Export
- Add variable: Group Quarters.



# Activity 2: Smart Map Search

- 1. Pets and pet spending
- 2. Construction and insurance

The screenshot displays the 'Smart Map Search' interface. On the left, a panel titled 'Set your ranges.' shows search criteria for 'Census Tracts' in the 'Current map e...'. Two criteria are selected:

- HH owns 2+ dogs: Range from 153 to 193. Metrics: #, %, Index.
- Entertainment/Recreation - Pets: Range from 100 to 305. Metrics: #, Avg, Index.

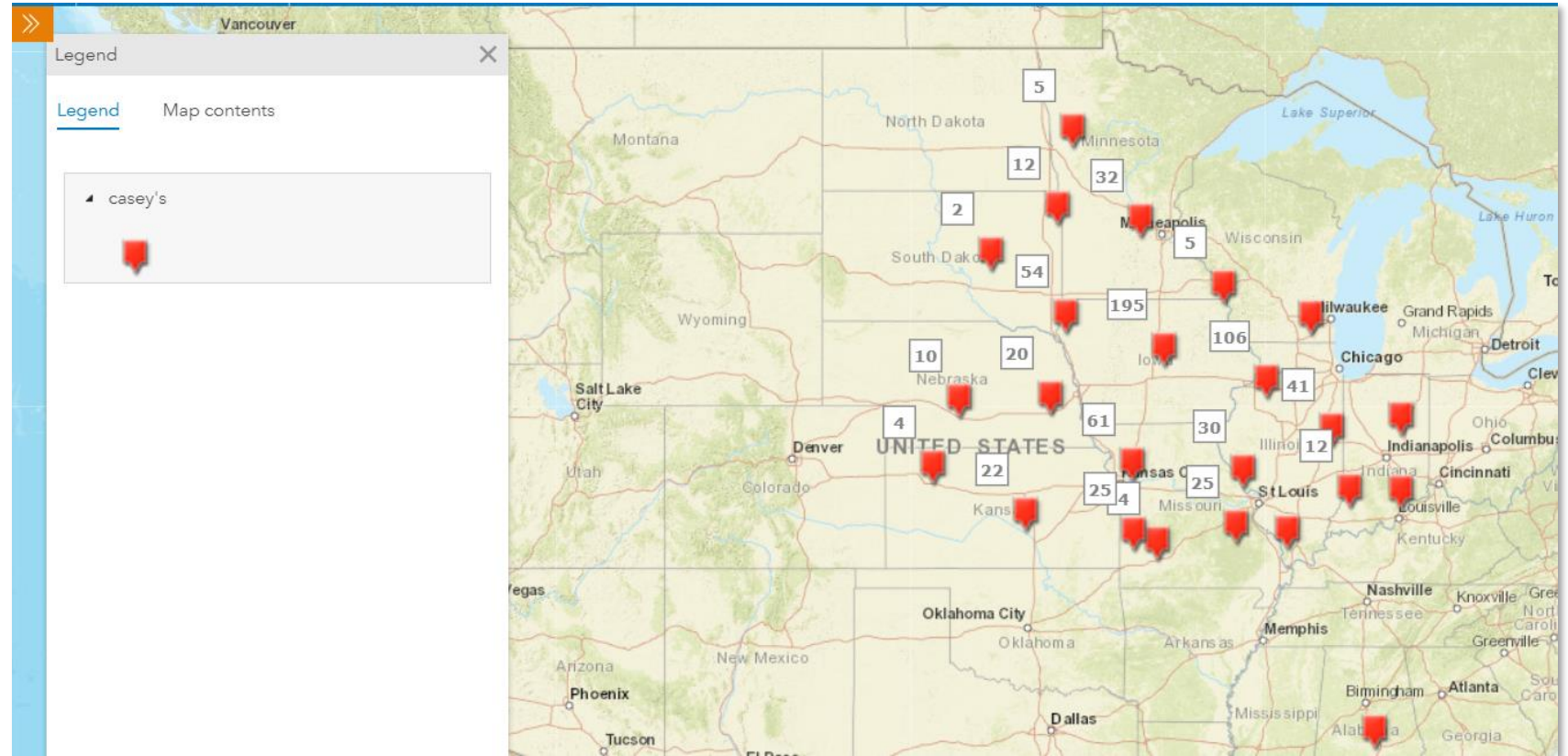
Buttons for 'Add more variables', 'Save criteria', 'Change variables', and 'View Results Table' are visible. The map on the right shows several census tracts highlighted in blue, indicating they meet the search criteria. The map includes labels for various cities and towns such as Warren, Akron, and Canton, along with major roads like I-76 and I-80. The Esri logo is in the bottom right corner.

This close-up shows two search criteria:

- 2018 Occupation: Construction/Extracti...: Range from 4.57% to 8.52%. Metrics: #, %.
- Have accidental death and dismember...: Range from 6.13% to 9.12%. Metrics: #, %, Index.

# Activity 3: Mapping Businesses

- 1. Analyze 2 regional businesses.
- 2. Site suitability analysis in 1 community.
- 3. Create Infographics



### KEY FACTS

6,021

Population



2.5

Average Household Size

31.7

Median Age

\$50,602

Median Household Income

### EDUCATION

9%

No High School Diploma



20%

High School Graduate



30%

Some College



40%

Bachelor's/Grad/Prof Degree

### BUSINESS



512

Total Businesses



5,619

Total Employees

### EMPLOYMENT



63%

White Collar



17%

Blue Collar



20%

Services

4.0%

Unemployment Rate

### INCOME



\$50,602

Median Household Income



\$24,529

Per Capita Income



\$36,981

Median Net Worth

### Households By Income

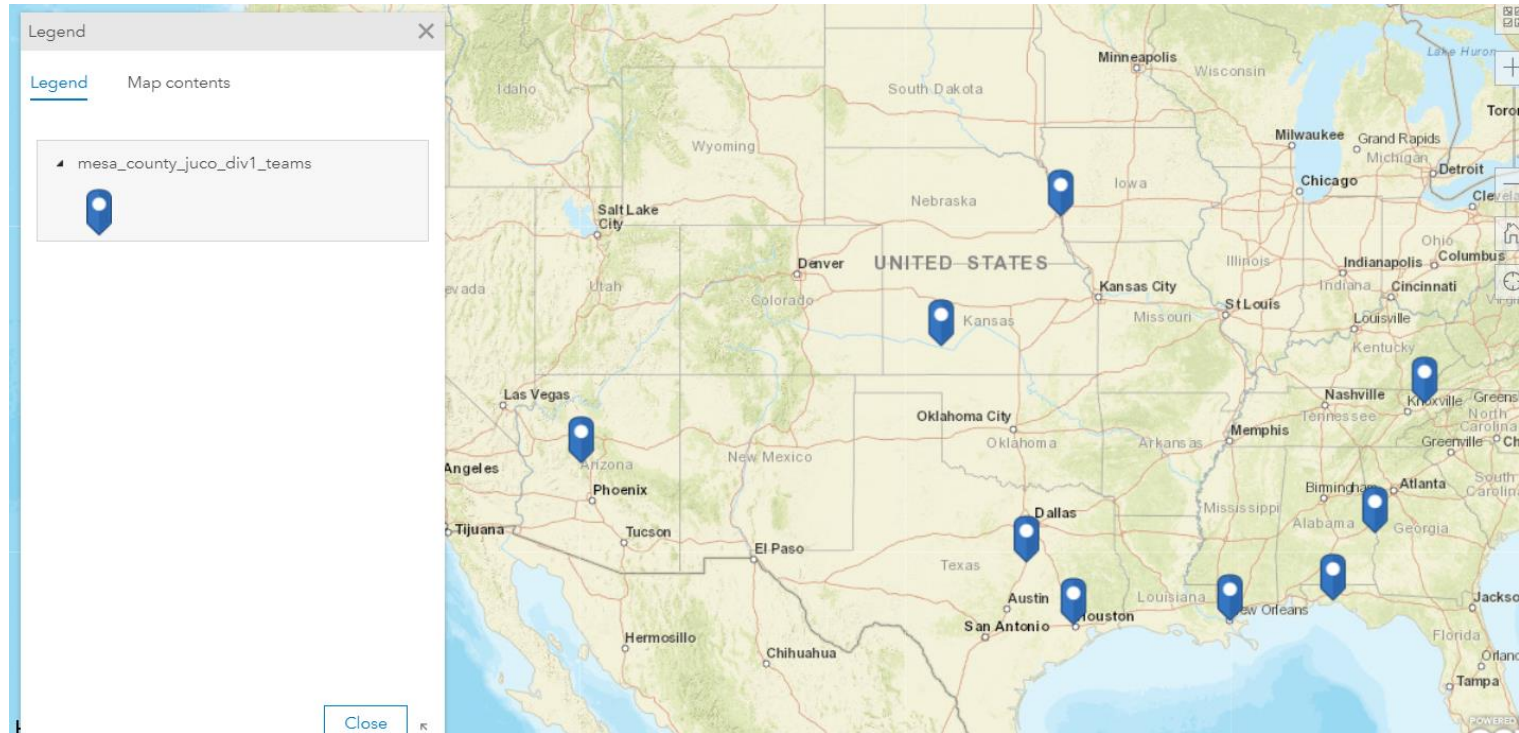
The largest group: \$50,000 - \$74,999 (20.9%)

The smallest group: \$150,000 - \$199,999 (1.7%)

Indicator ▲	Value	Difference	
<\$15,000	11.4%	-1.4%	<div style="width: 11.4%;"></div>
\$15,000 - \$24,999	9.0%	-1.1%	<div style="width: 9.0%;"></div>
\$25,000 - \$34,999	11.5%	+1.8%	<div style="width: 11.5%;"></div>
\$35,000 - \$49,999	17.3%	+3.5%	<div style="width: 17.3%;"></div>
\$50,000 - \$74,999	20.9%	+3.0%	<div style="width: 20.9%;"></div>
\$75,000 - \$99,999	12.9%	+0.1%	<div style="width: 12.9%;"></div>
\$100,000 - \$149,999	13.3%	0	<div style="width: 13.3%;"></div>
\$150,000 - \$199,999	1.7%	-3.1%	<div style="width: 1.7%;"></div>
\$200,000+	2.0%	-2.9%	<div style="width: 2.0%;"></div>

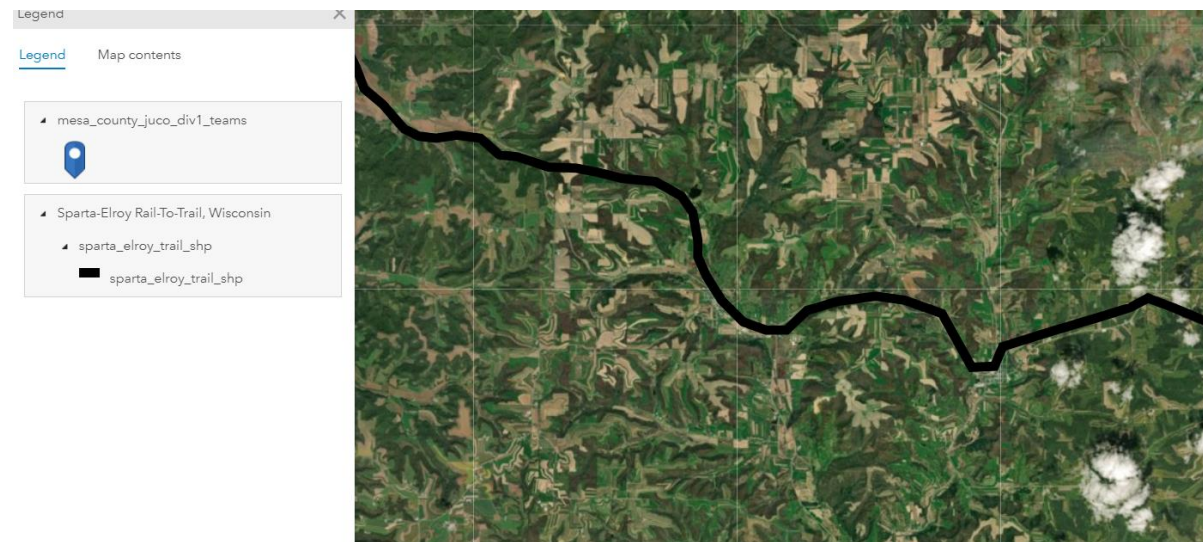
# Activity 4: Add data from CSV

- Add data from CSV file for baseball tournament; analyze patterns.



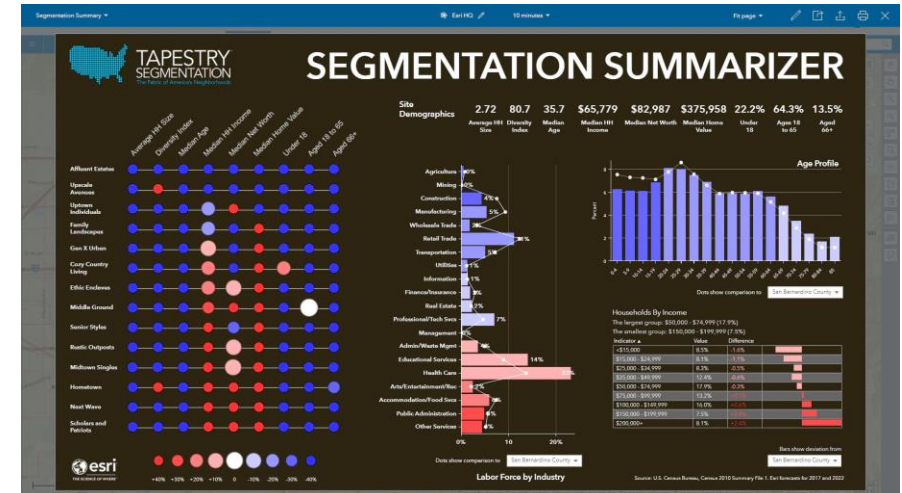
# Activity 5: Add data from ArcGIS Online

- 
- Add data from ArcGIS Online: Sparta Elroy Trail – so that you can use it to determine optimal location for new bike-ski rental and sales shop in the vicinity. Add bike-ski rental shops. Buffer the trail by 5-10-15 miles. Add consumer behavior: purchased bicycle recently.
- 



# Infographics

<https://www.esri.com/arcgis-blog/products/product/business/business-analysis-infographics/>



### 3 Last but Important CA/Business Analyst Web points

- 1. In addition to the United States, data and reports are available for more than 135 countries.
- **2. To bring your own data into Business Analyst Web:**
  - (A) Via Excel spreadsheet of addresses or lat-long locations using Maps > Define Areas for Reports > Import File.
  - (B) Import a shapefile polygon and point data via Maps > Define Areas for Reports > Import File.
  - (C) Via a web map from ArcGIS.com, then access your map for analysis within Business Analyst Web Maps via More Maps > Web Maps.
- 3. Community Analyst is the same product as Business Analyst Web. Only the colors and a few terms are different.



# Questions? Concerns?

- Feel free to contact: [jkerski@esri.com](mailto:jkerski@esri.com)

Esri Education: K12, Universities, Informal Education, Community College:

[www.esri.com/education](http://www.esri.com/education)

## Other Education Related resources:

- GIS in education on GeoNet Community:  
<https://geonet.esri.com/community/education>
- Spatial Data and Societal Issues:  
<http://spatialreserves.wordpress.com>
- 4,500 geo-ed-STEM-place-space-GIS videos:  
[www.youtube.com/geographyuberalles](http://www.youtube.com/geographyuberalles)

# CA/Business Analyst Web: Additional Resources

- Esri GeoNet place for Business Analyst Web:  
<https://community.esri.com/groups/business-analyst>
- Business Analyst FAQ:  
<https://doc.arcgis.com/en/business-analyst/web/faqs.htm>
- Business Analyst Web licensing tips:  
<https://www.esri.com/arcgis-blog/products/apps/business/the-way-you-manage-your-esri-business-analyst-web-app-licenses-has-changed/>



# Investigations in Demographics, Consumer Behavior, and Businesses with Community Analyst / Business Analyst Web

Joseph J. Kerski, PhD, GISP, Esri

[jkerski@esri.com](mailto:jkerski@esri.com) • [en.wikipedia.org/wiki/Joseph\\_Kerski](https://en.wikipedia.org/wiki/Joseph_Kerski)

Daily geo-dose: [twitter.com/josephkerski](https://twitter.com/josephkerski)

5,000 geo-related videos: <https://esriurl.com/ouearth>

Data book and blog: [spatialreserves.wordpress.com](https://spatialreserves.wordpress.com)