



We will get started at the top of the hour!

Your Caribbean Story Launch Event



Your Caribbean Story Launch Event

Organized by UN-GGIM Americas, CARIGEO and Esri



#YourCaribbeanStory Student Competition

- Announcement of opening of contest
- Introducing UN-GGIM and CARIGEO
- Official Welcome from UN-GGIM Americas President and UN-GGIM Americas Caribbean Vocal
- Why a contest for GIS and the Caribbean ?
- Guest Speakers
- A word from our Sponsors
- Open Q/A
- Thank you and resources to help you succeed

<https://yourcaribbeanstory.caribbeangeoportal.com/>

Your Caribbean Story

YOUR CARIBBEAN STORY

We are pleased to announce the
inaugural 2022 CARIGEO Student
Competition

<https://yourcaribbeanstory.caribbeangeoportal.com/>

Ms. Cecille Blake

UN-GGIM and UNGEGN Secretariat
New York, USA





Mr. Cristián Araneda Hernández

President UN-GGIM Americas

Chile





Ms. Simone Lloyd,
GISP

Caribbean Vocal
UN-GGIM Americas

Jamaica





Mrs. Linda Peters

Global Business Development, Esri

Redlands, CA, USA

Competition Basics

- Competition Opened Jan 24, 2022
- Launch Event Jan 27, 2022
- Register to be a part of the competition by Feb 28, 2022
- Decide which track you want to participate in
 - Place Based Storytelling – Track 1
 - GIS Application – Track 2
- Have until April 30 to complete and submit your work
- DON'T MISS Webinars start on Feb 3rd – every Thursday 12 noon eastern

Judges

Mrs. Jacqueline daCosta – Land Information Council Jamaica

Dr. Michael Sutherland – The University of the West Indies

Ms. Sandra Turner – National Geographic Certified Educator

Dr. Silburn Clarke – Spatial Innovision Limited

Ms. Khadija Benn – Independent GIS Consultant

Mrs. Paloma Merodio – INEGI/GGIM

Ms. Cecille Blake – UNSD/GGIM Secretariat

Dr. Rosario Casanova – GGIM/Academic Network

Dr. Zaffar Sadiq Mohamed-Ghouse – World Geospatial Information Council (WGIC)

Mr. Eric Van Praag – Esri

Mrs. Alison DeGraff Ollivierre – Tombolo Maps & Design

Judging Criteria

Both track 1 and 2:

Research and/or Story Flow

Content

Presentation

Stimulates Interest

Communication/Story Telling

Map and Information Graphics Use

Likely to Create Immediate Impact

Track 2 also look at:

Application User Interface

Functionality of App

App Design

Does the Application Solve Problem
as intended?

Webinar Series

- Starting on Feb 3rd – every Thursday 12 noon eastern
- Feb 3rd Preparing for the competition
- Feb 10th Get Started with Mapping
- Feb 17th Creating a Good Story with ArcGIS StoryMaps
- Feb 24th Analysis
- Mar 3rd Visualization
- Mar 10th Building an App

+ imagery available via Maxar

Prizes

Prizes will be awarded for:

Exemplary Research – Intern/Externship – The University of the West Indies

Most Innovative Solution for Development – Intern/Externship – Gov of Jamaica

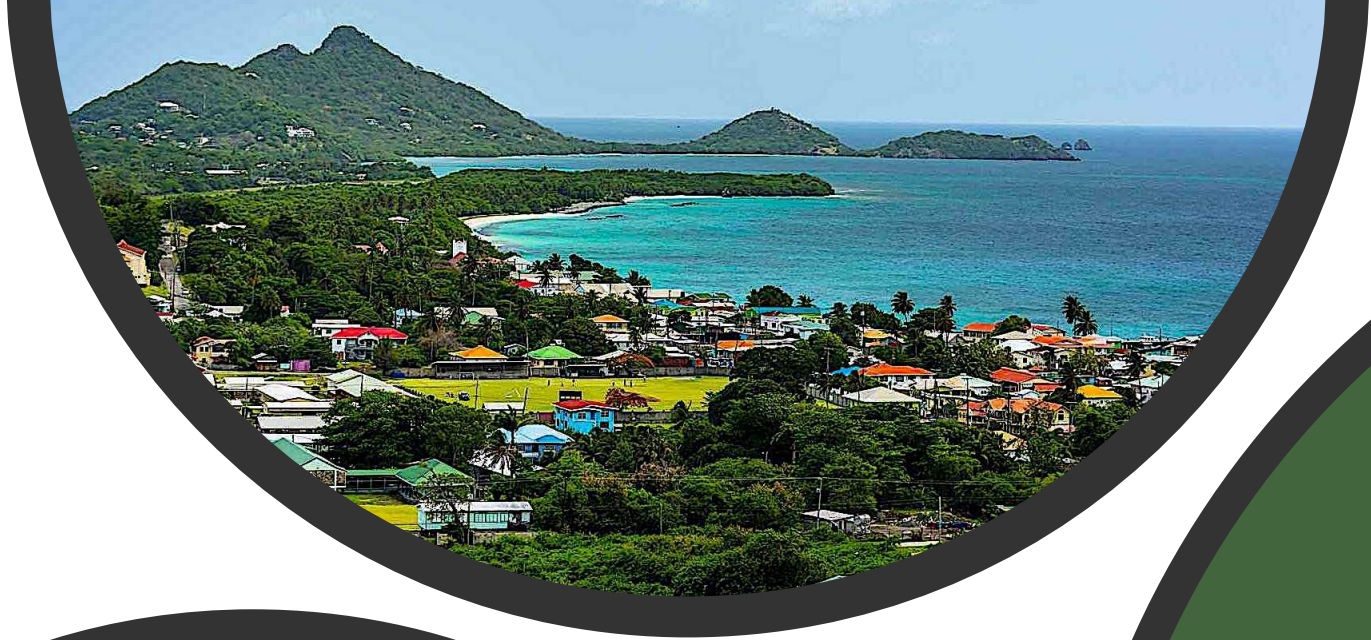
Best App – Intern/Externship – GeoTechVision

Best Story Map – Intern/Externship – Esri

Best overall submission for **Women in GIS** - US\$3,500 sponsored by Reigl USA

Best overall submission for **Climate Change** - US\$2,000 sponsored by Geo1

Best overall submission for **Sustainability** – US\$1,000 sponsored by Trimble



Ms. Valrie Grant

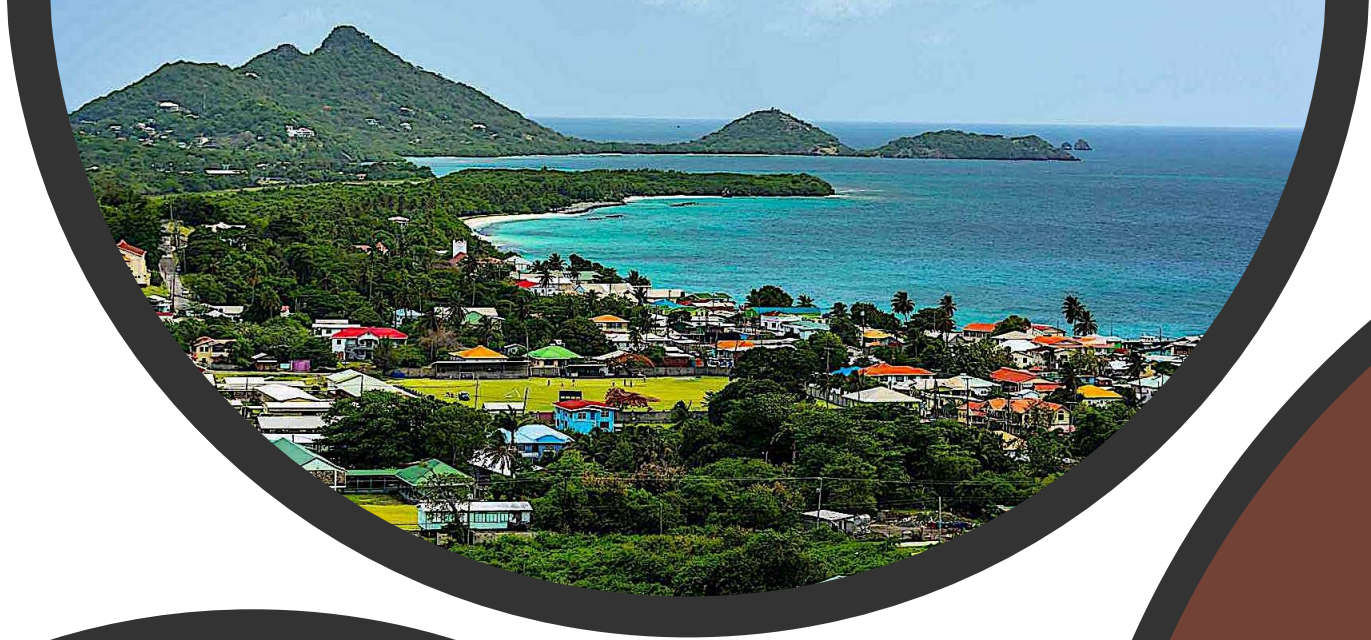
Founder and Chair, GeoTechVision

Jamaica



Ms. Khadija Benn

GIS Consultant
Guyana



Mr. Ronald Jackson

Head of Disaster Risk Reduction, Recovery and Resilience Building
Team, UNDP – Geneva

Jamaica



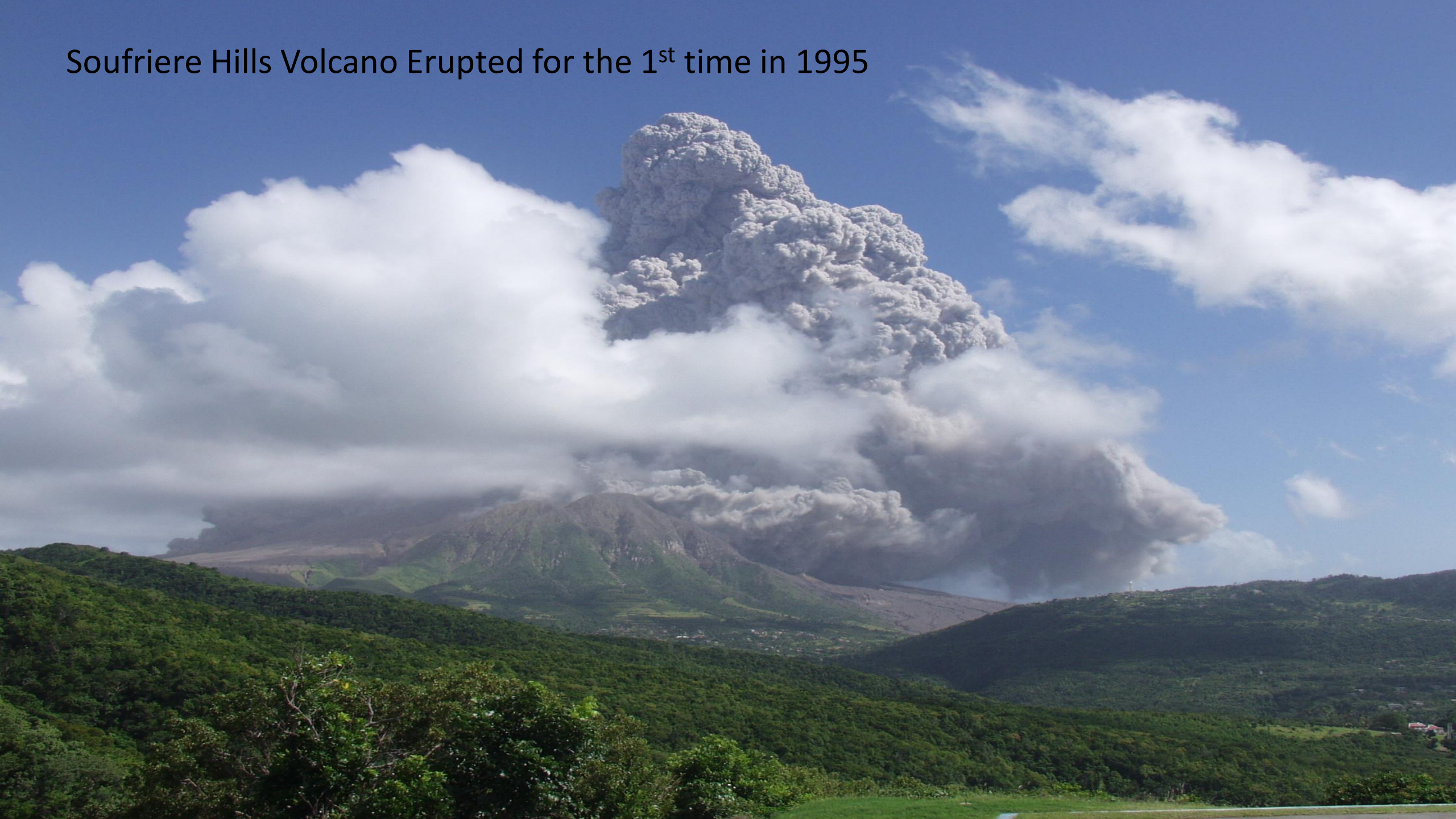
Ms. Lavern Ryan

CEO, LRR Geospatial Consultancy
Montserrat

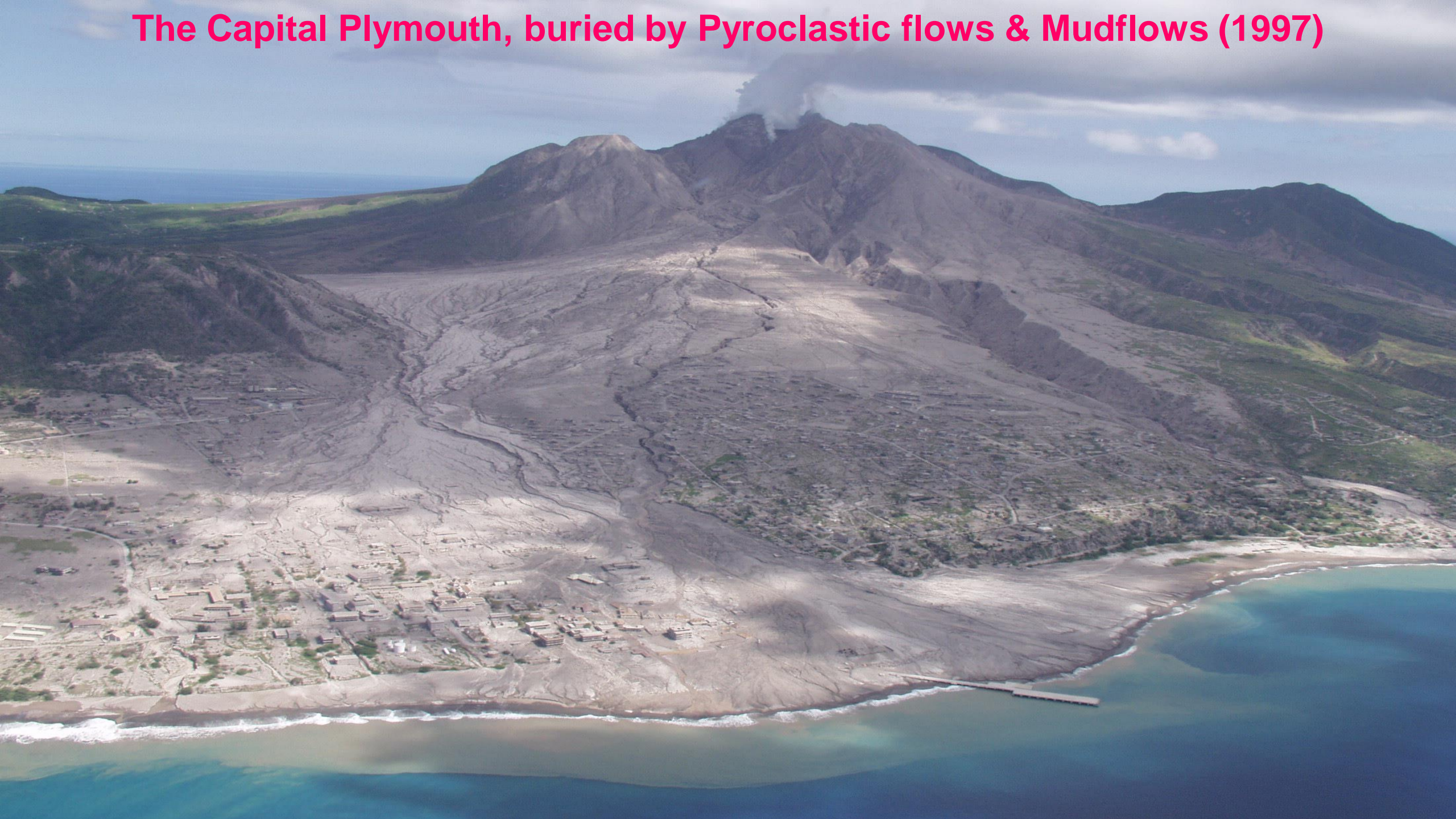
- I was born on the island of Montserrat where I currently live and work
- Montserrat is located 27 miles SW of Antigua
- Montserrat has an active volcano



Soufriere Hills Volcano Erupted for the 1st time in 1995

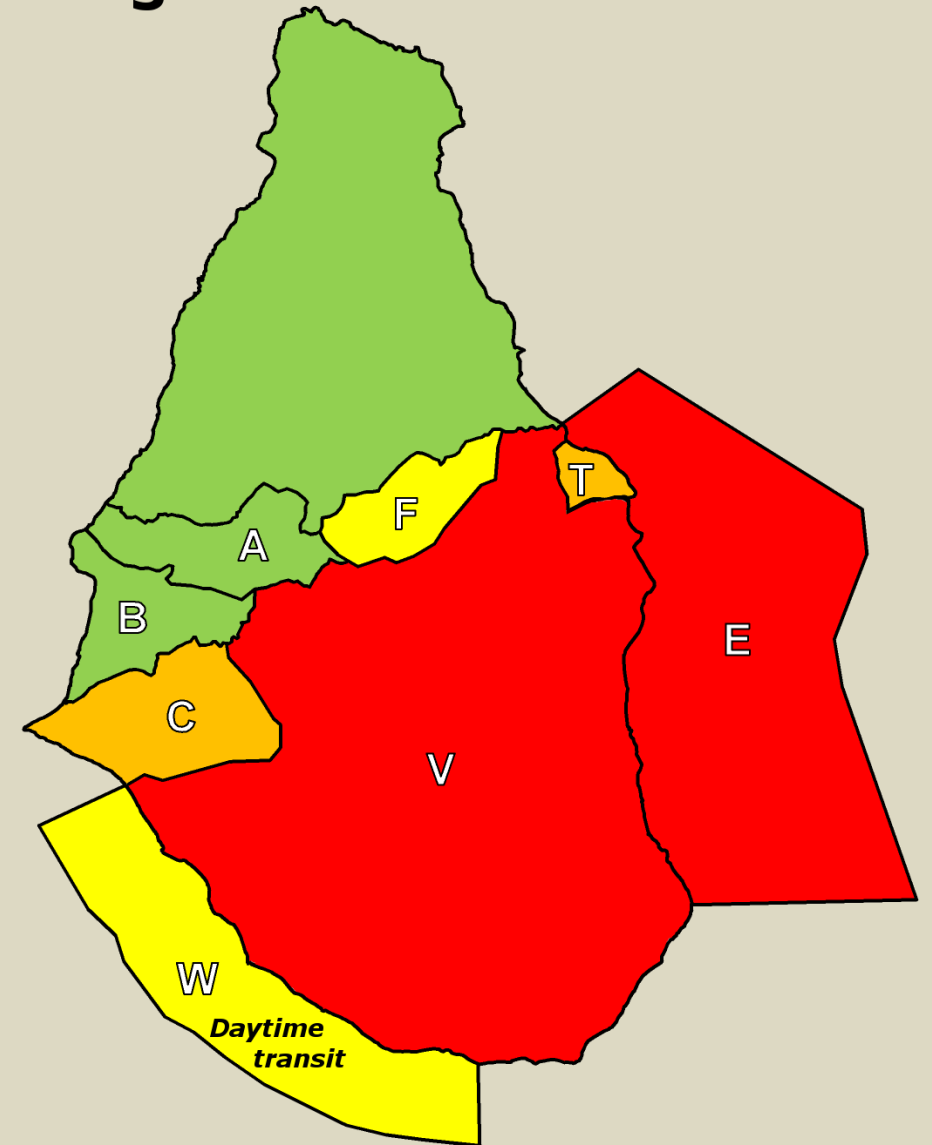


The Capital Plymouth, buried by Pyroclastic flows & Mudflows (1997)





Hazard Level 3



Access Restrictions

Unrestricted - Ashfall and lahars can be significant hazards in all areas, and require appropriate precautions.

Daytime access - Access is permitted from 6:30 am until 5:30 pm. Access gates will be locked at all other times.

Daytime access to some areas - Areas will be defined depending on state and location of the volcanic activity.

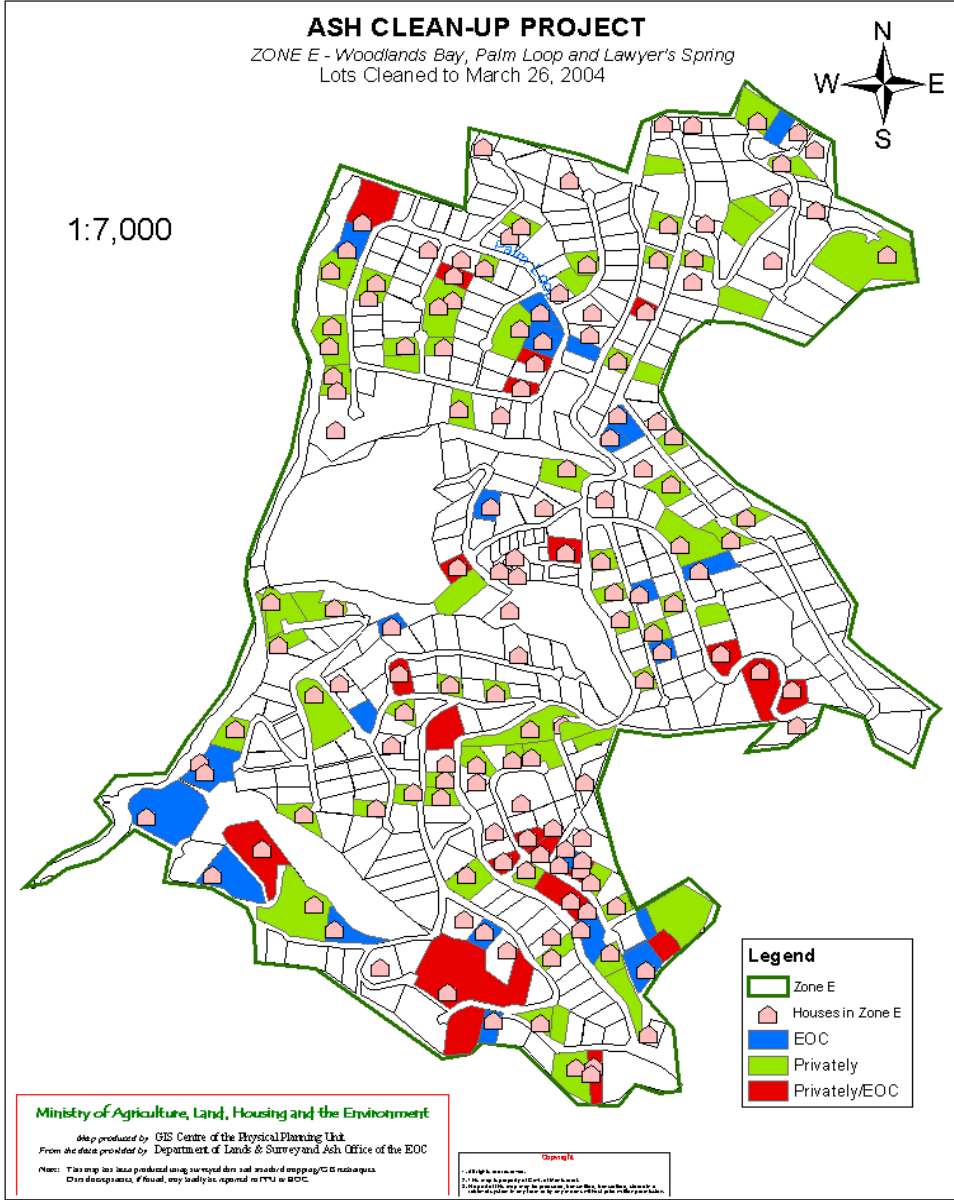
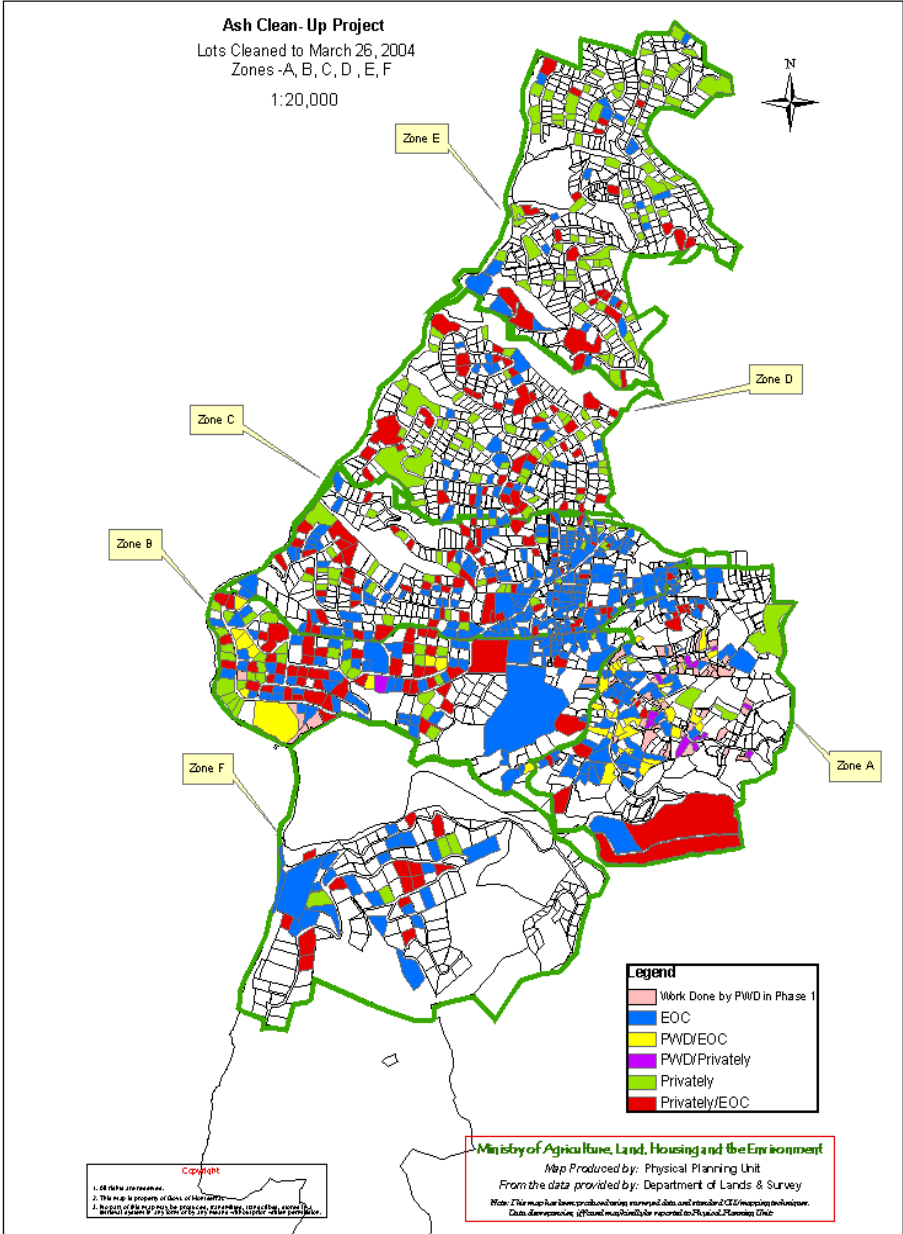
Daytime transit - Boats permitted to travel through the MEZ without stopping from 6:30 am until 5:30 pm.

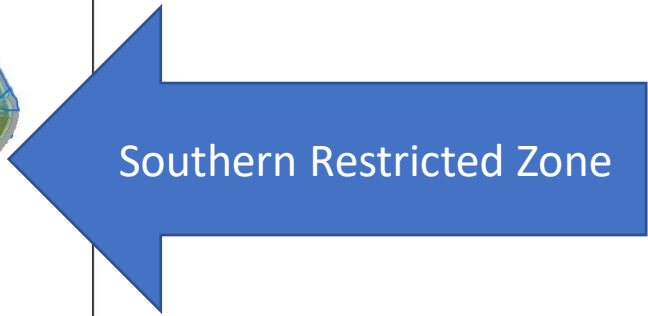
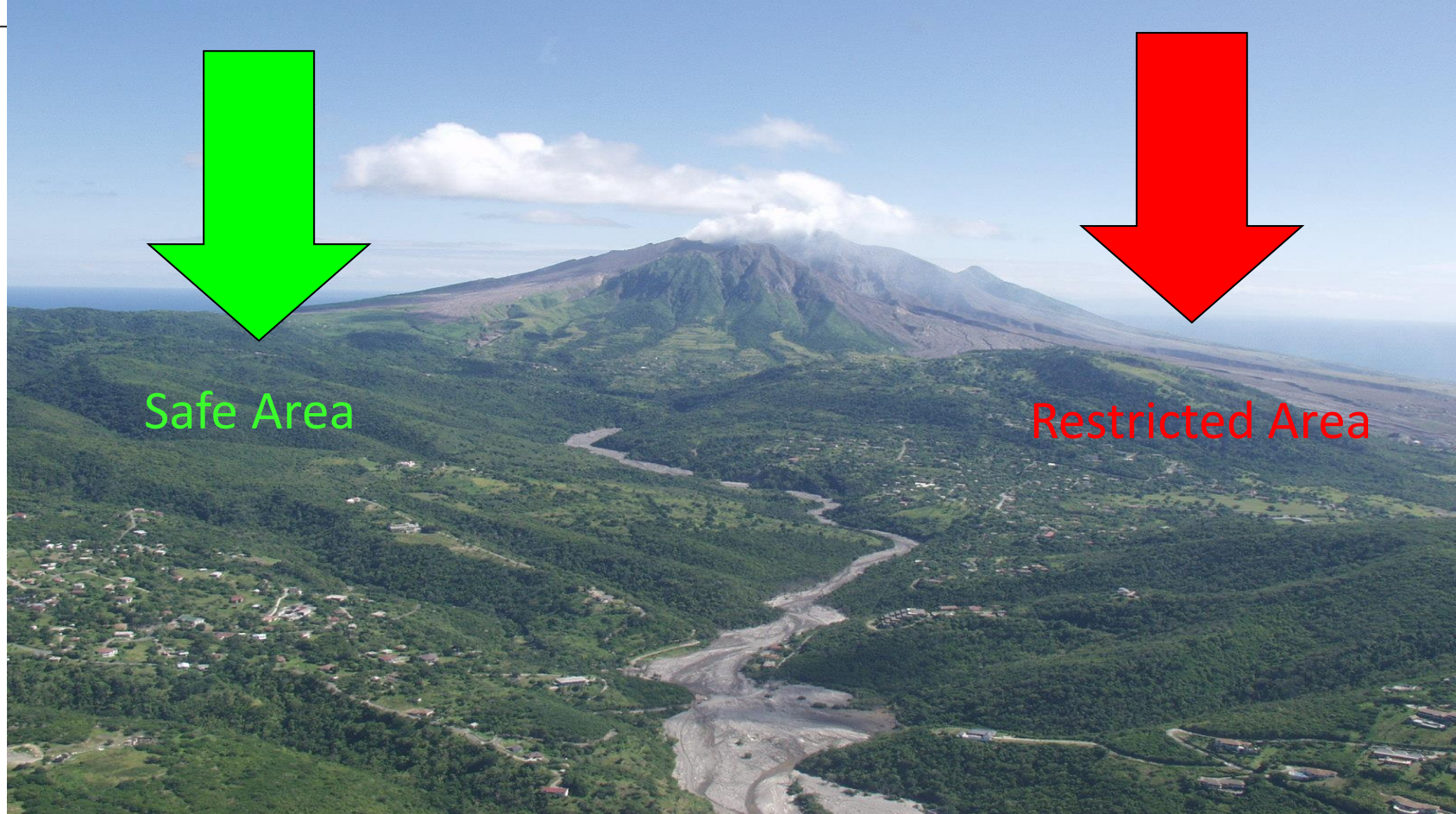
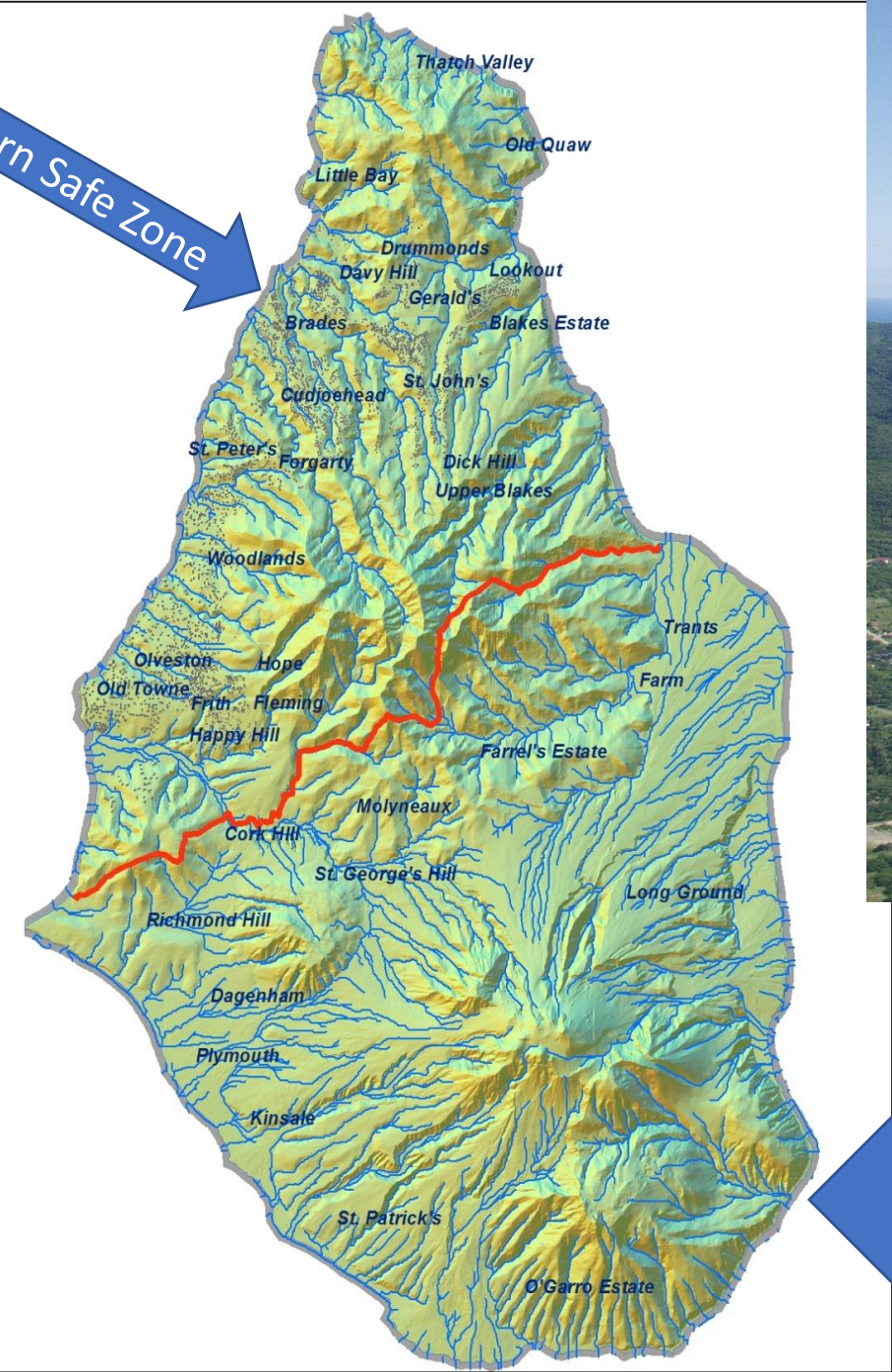
Controlled access - No access without approval from NDPRAC. Approval considered on a case-by-case basis. Gates will be locked at all times.

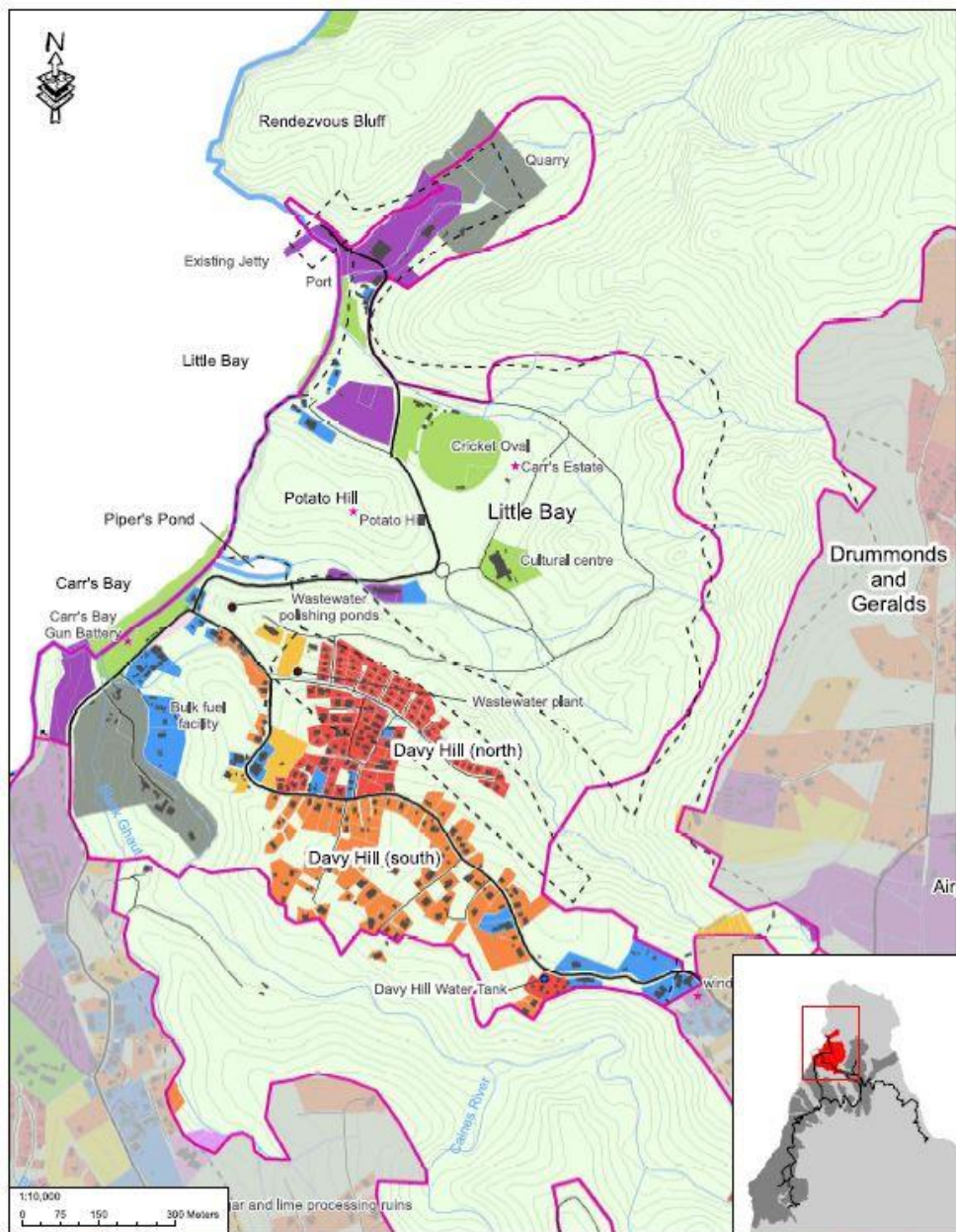
Essential workers - No access apart from MVO and associated staff. Access for essential maintenance only with approval from NDPRAC. Gates will be locked at all times.

- GIS provided a tool for disaster management
- Mapping hazard zones and areas of risk

GIS Application – Ash Clean-up Project







PHYSICAL DEVELOPMENT PLAN
for North Montserrat
2012-2022

July 2012

GOVERNMENT OF MONTSERRAT
Physical Planning Unit
Ministry of Agriculture, Land, Housing and the Environment

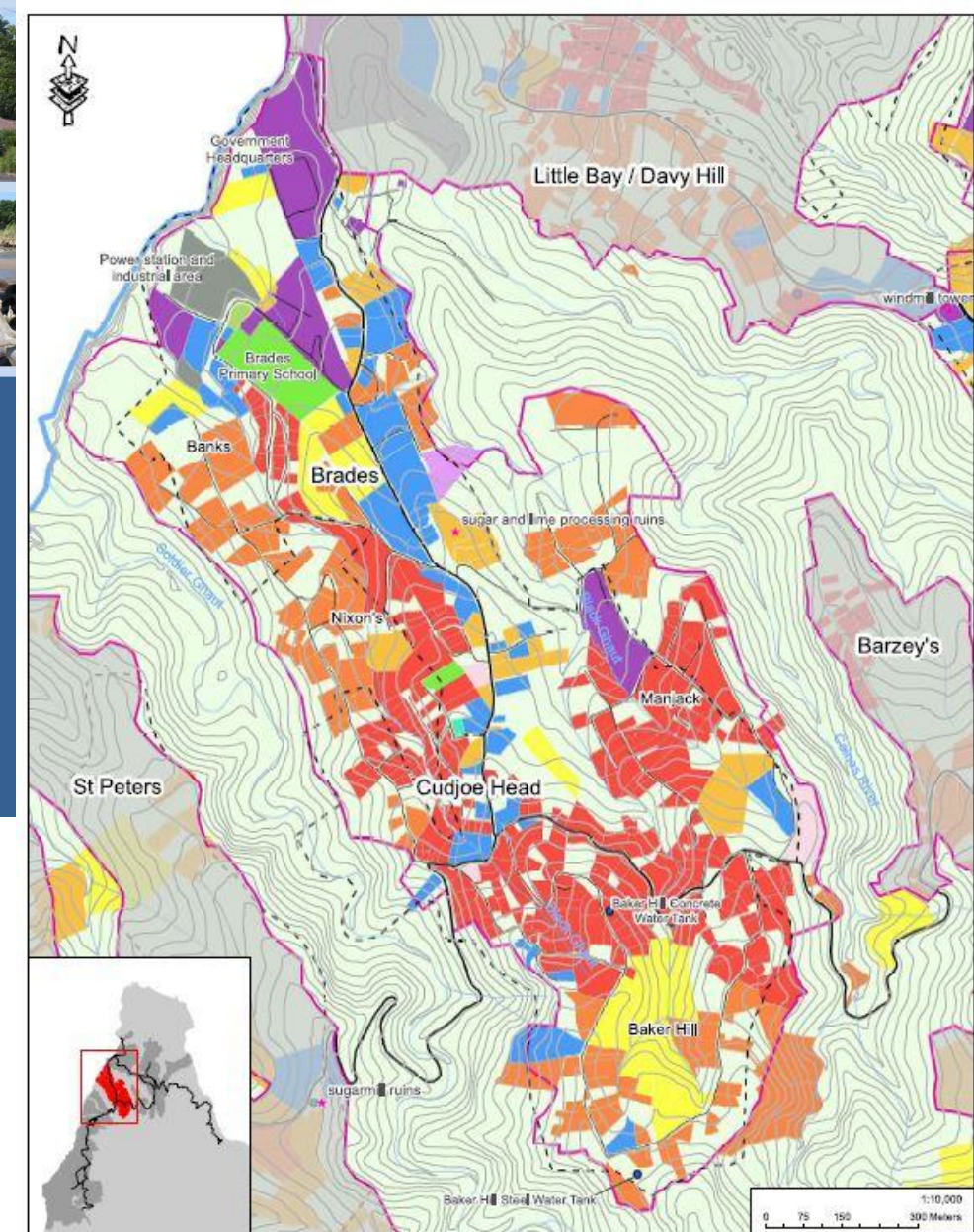
GOVERNMENT OF MONTSERRAT
Ministry of Agriculture, Land, Housing and the Environment
PHYSICAL PLANNING UNIT
in association with
IMC WORLDWIDE LTD.

Legend

— Main Roads	Existing Land Use	Education
— Minor Roads	Real High Density	Health
— Rivers and Gullies	Real Medium Density	Social Care
★ Heritage Sites	Real Low Density	Community, Recreation and Sport
— 2012-2022 LAP Boundaries	Commercial	Religious
— 2000-2009 LAP Boundaries	Government	Industrial
	Agriculture	Vegetation

PHYSICAL DEVELOPMENT PLAN FOR NORTH MONTSERRAT 2012-2022
Davy Hill, Little Bay and Carr's Bay Existing Situation (2011)

January 2012 **Figure 7.10**



GOVERNMENT OF MONTSERRAT
Ministry of Agriculture, Land, Housing and the Environment
PHYSICAL PLANNING UNIT
in association with
IMC WORLDWIDE LTD.

Legend

— Main Roads	Existing Land Use	Education
— Minor Roads	Real High Density	Health
— Rivers and Gullies	Real Medium Density	Social Care
★ Heritage Sites	Real Low Density	Community, Recreation and Sport
— 2012-2022 LAP Boundaries	Commercial	Religious
— 2000-2009 AAP Boundaries	Government	Industrial
	Agriculture	Vegetation

PHYSICAL DEVELOPMENT PLAN FOR NORTH MONTSERRAT 2012-2022
Cudjoe Head and Brades Existing Situation (2011)

January 2012 **Figure 7.12**

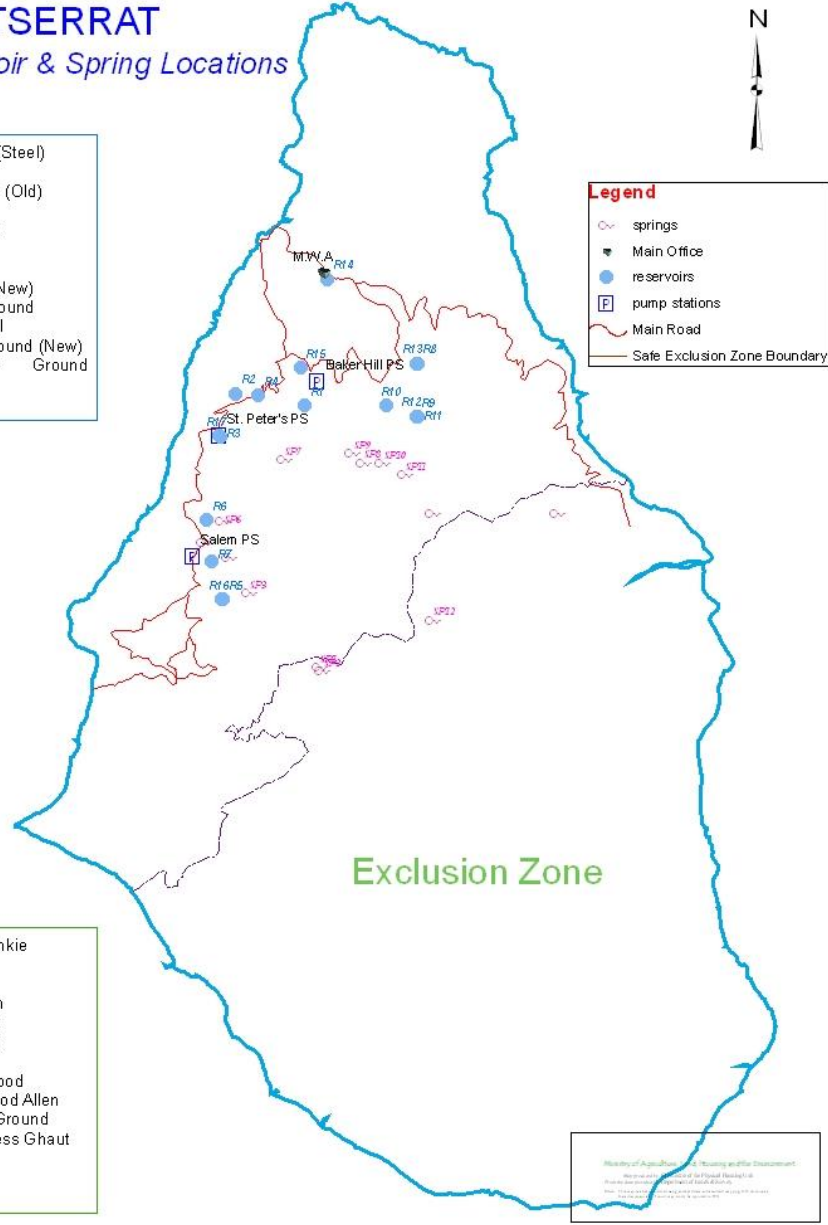
GIS was identified as a suitable tool for planning and allocating proper use of the remaining land in the north of the island

MONTSERRAT

Reservoir & Spring Locations

- R1 Baker Hill (Steel)
- R2 Beulah
- R3 St. Peter's (Old)
- R4 Fogarty
- R5 Hope (old)
- R6 Lawyers
- R7 Olveston
- R8 Dick Hill (New)
- R9 Ginger Ground
- R10 Mongo Hill
- R11 Ginger Ground (New)
- R12 Ginger Ground (Concrete)

- SP1 Killiecrankie
- SP2 Monkey
- SP3 Hope
- SP4 Olveston
- SP5 Quashie
- SP6 Lawyers
- SP7 Fogarty
- SP8 Underwood
- SP9 Blackwood Allen
- SP10 Ginger Ground
- SP11 Bottomless Ghaut
- SP12 Corbett



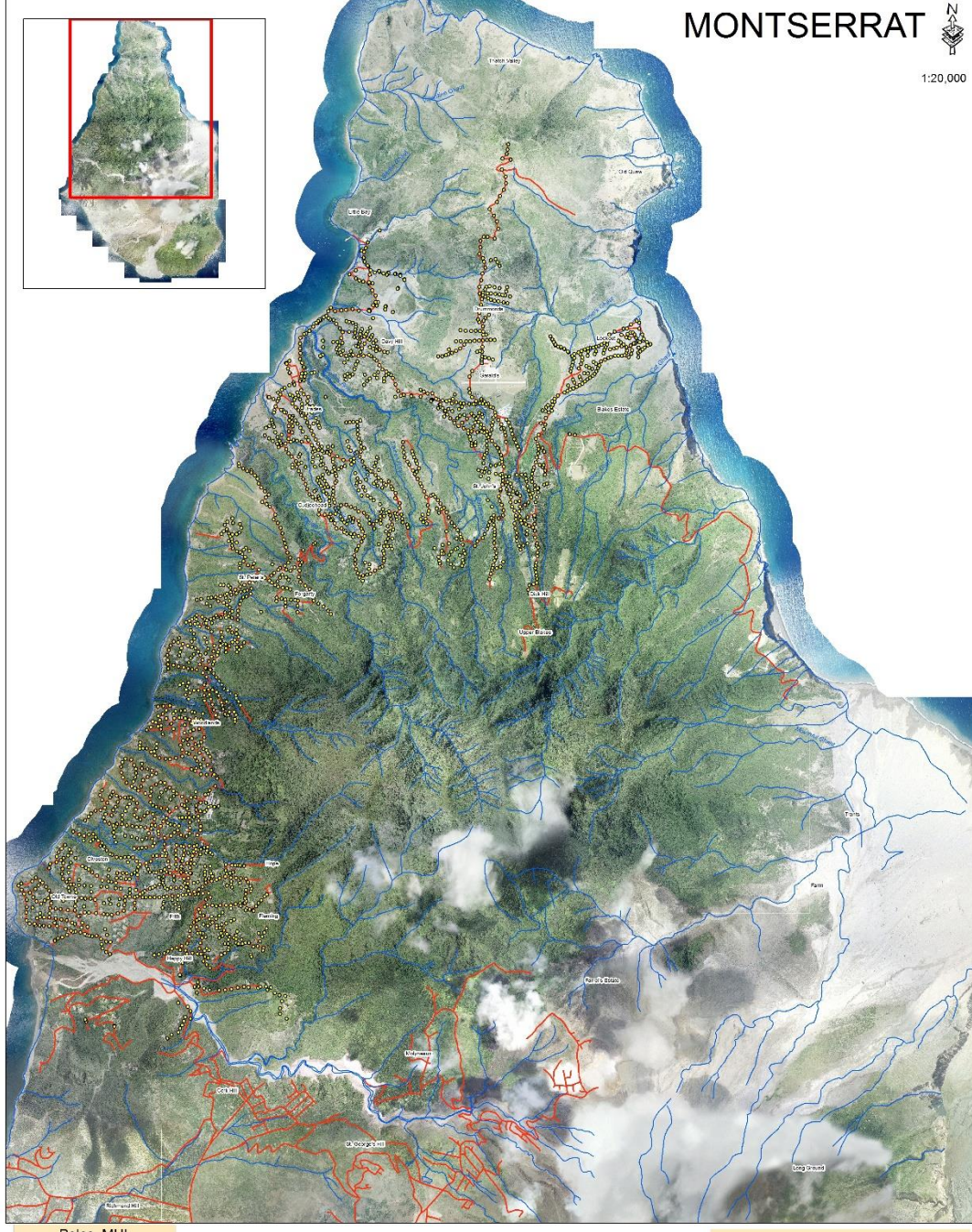
Legend

- springs
- Main Office
- reservoirs
- pump stations
- Main Road
- Safe Exclusion Zone Boundary

Ministry of Agriculture, Trade, Land, Housing and the Environment
 Prepared by: Department of Natural Resources
 Date: 2019



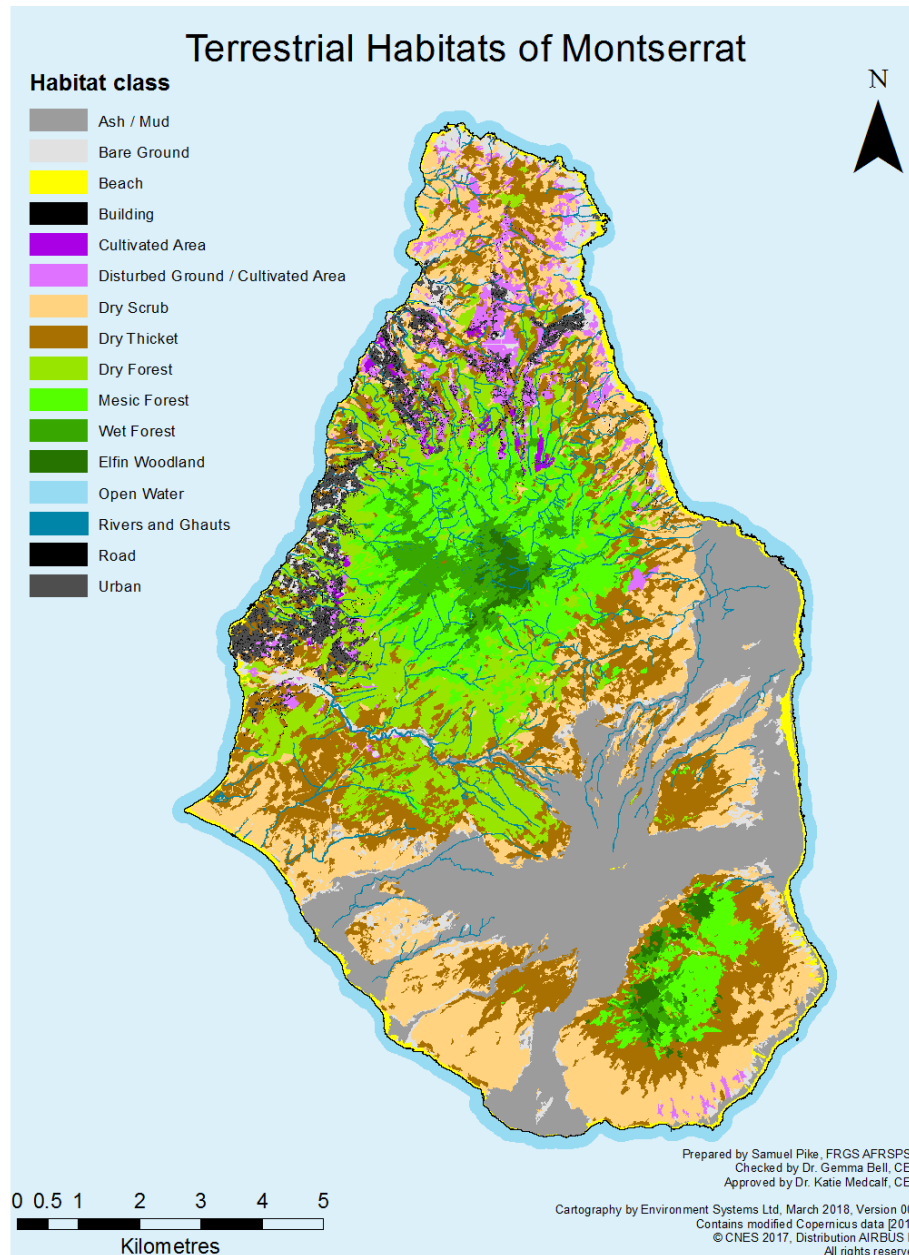
Utility Management: Water and Electricity



- Poles_MUL
- Rivers and Ghauts
- Roads

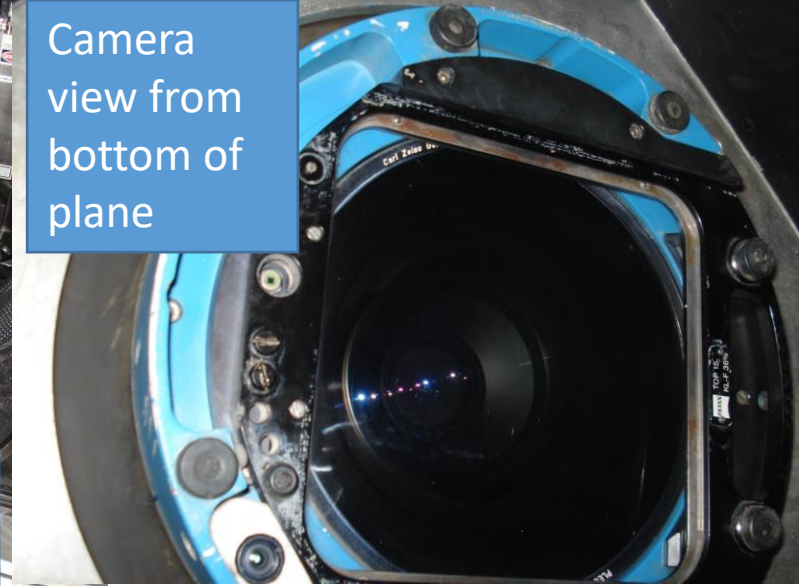
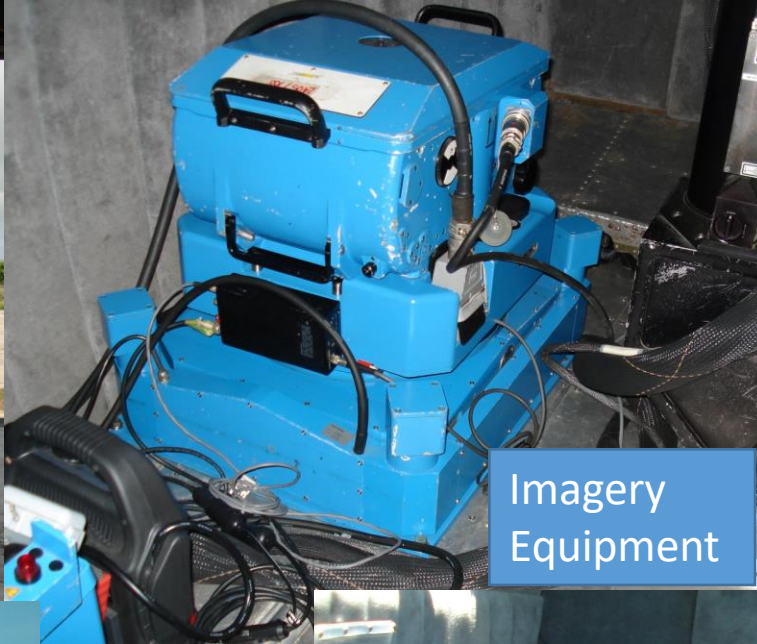


Biodiversity Management





GIS used to monitoring sand mining activity



Aerial Photography

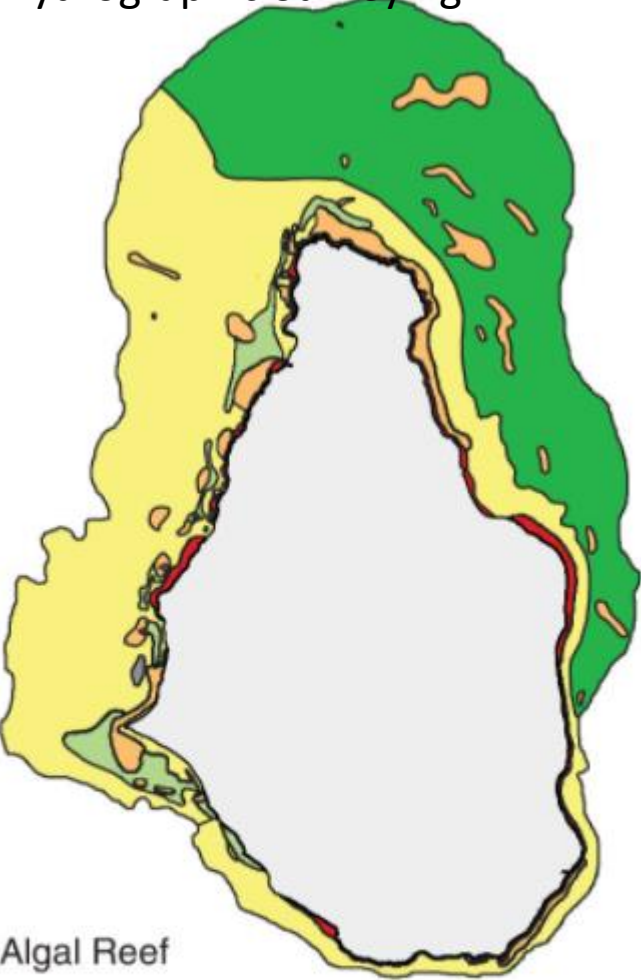


Drone Mapping

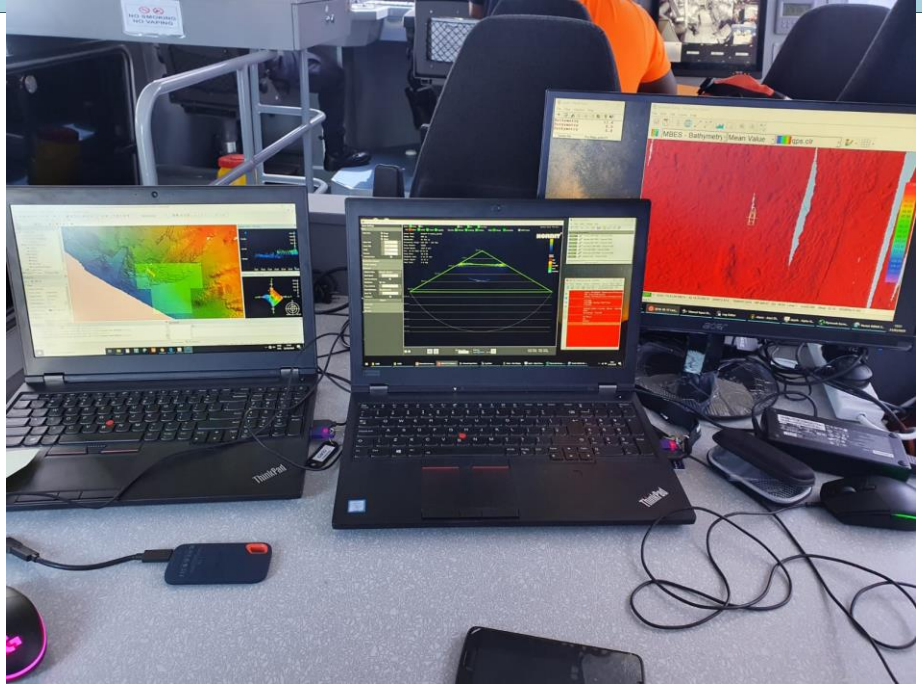
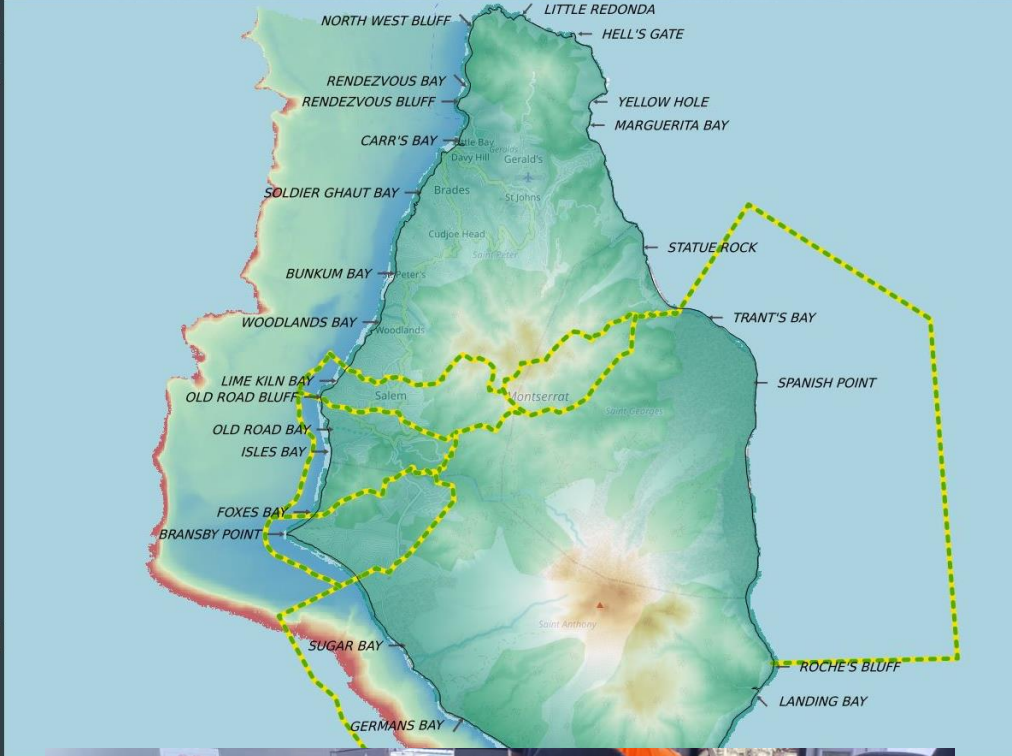
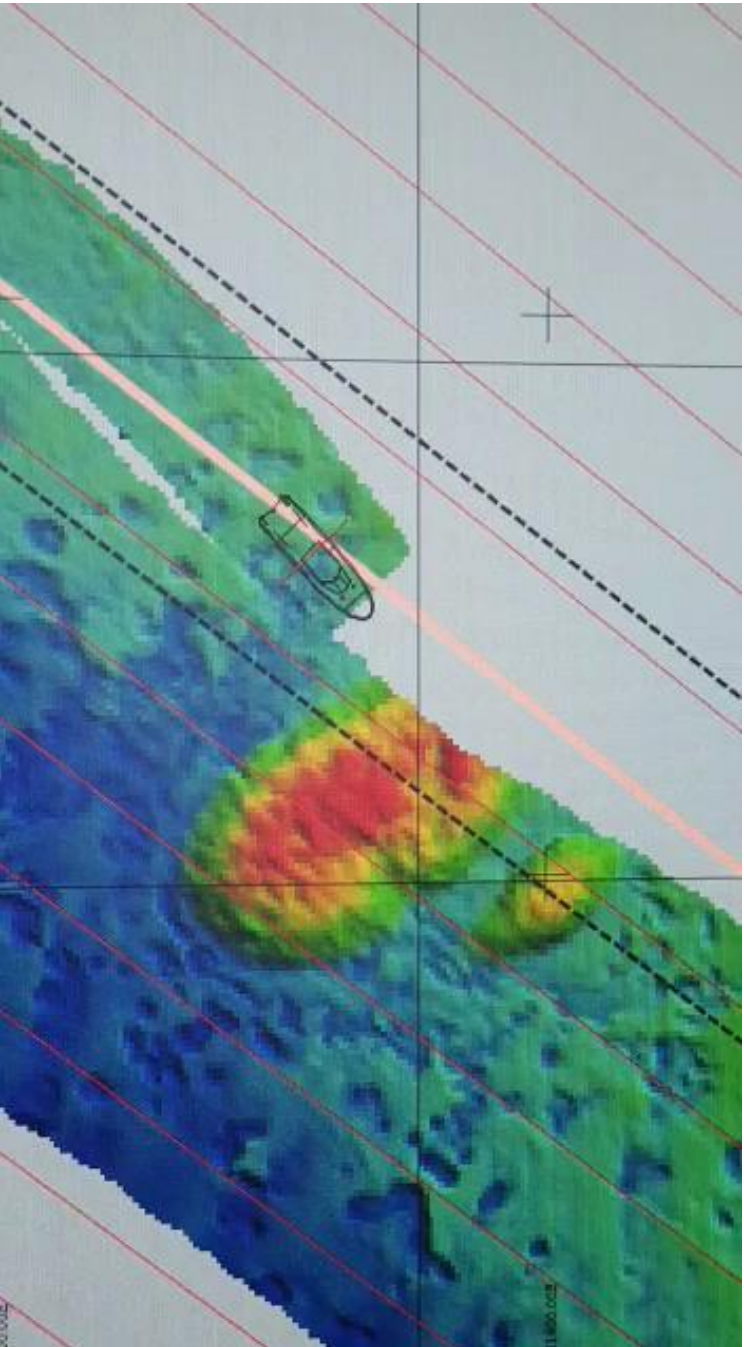


An updated base image will support the next Population and Housing Census

(a) Hydrographic Surveying

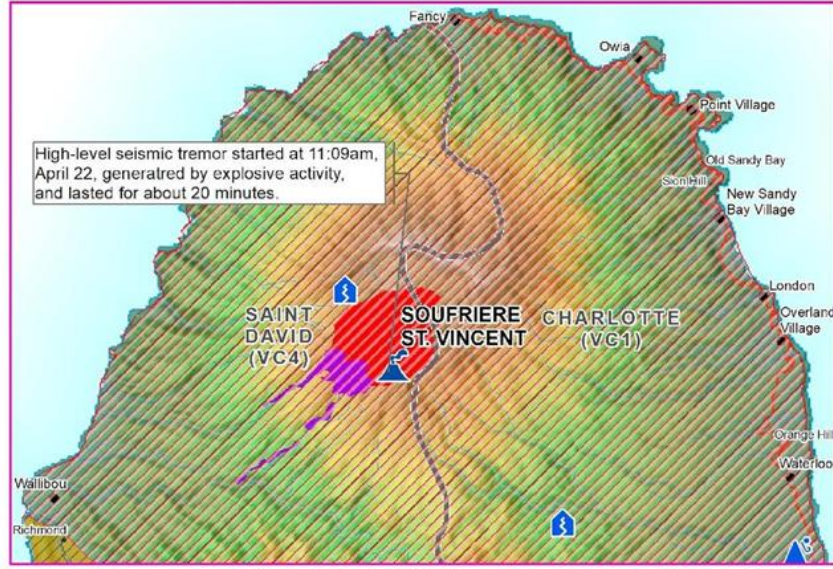
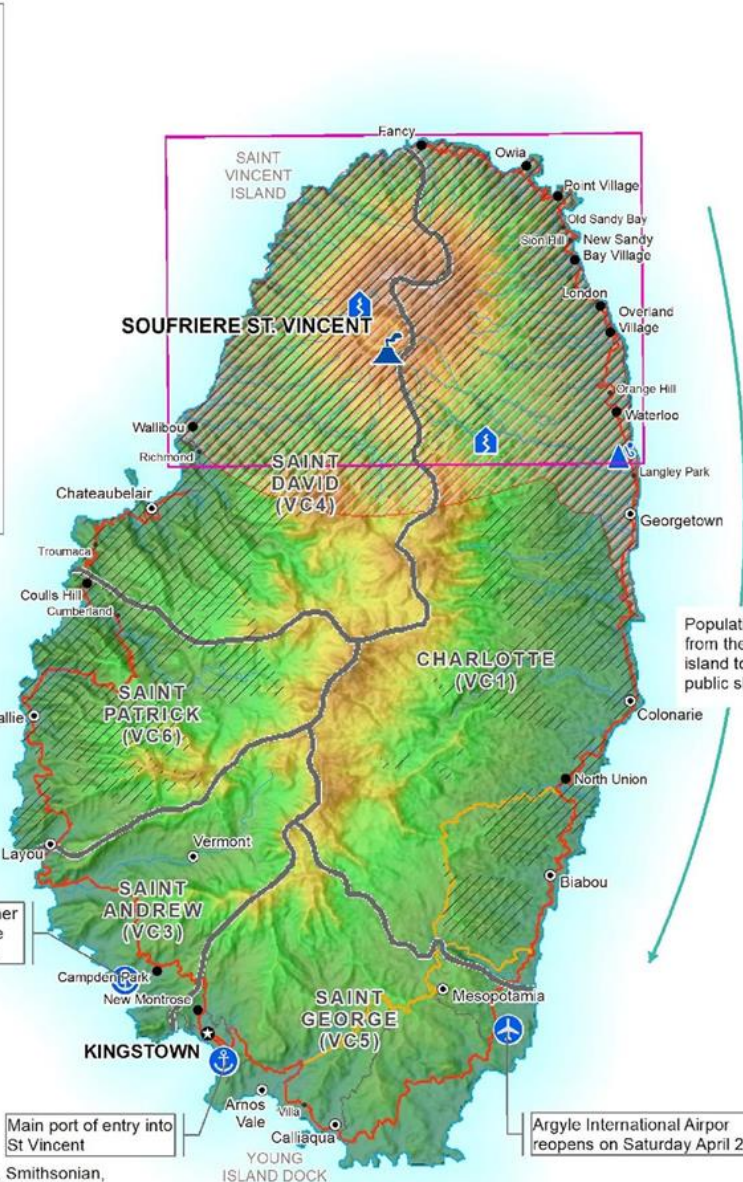


- Algal Reef
- Artificial Reef
- Colonized Volcanic Boulders
- Coral Reef
- Hard Bottom and Sand
- Sargassum Forest
- Seagrass



Caribbean Section Member: Lavern Ryan - Response Deployment





The volcano remains at alert level RED. Access to the volcano is strictly prohibited.

Population evacuated from the north of the island to currently 85 public shelters

Affected population (as at 26 April 2021)



Total of 13,303 persons displaced

- 6,790 Persons are Registered in Private Homes
- 85 Public Shelters with 4,430 occupants
- 1,618 families in private homes
- 156 Persons Sheltered in Hotels
- 1,333 Persons in Private Homes are Registered to Feed at Shelters

Campden Park Container Port used as alternative location for relief items.

Main port of entry into St Vincent

Argyle International Airpor reopens on Saturday April 24.

Data Sources
CDEMA, OpenStreetMap, NEMO, Smithsonian, SRTM, WHO, UNOSAT
Map created by MapAction (21/04/2021)

Events	Lava dome	Settlements	CAPITAL	Borders	River
Landslide	Ash fall	Town	PARISH	Airport	Primary
Seismic	Potential pyroclastic flow	Village	Seaport	Secondary	Tertiary
Volcano	Pyroclastic flow and surge	Hamlet			
	Very High Hazard				
	High Hazard				