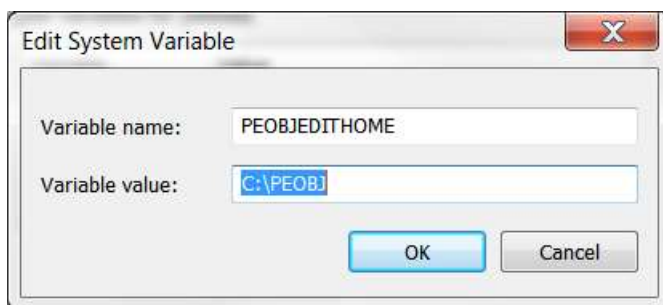
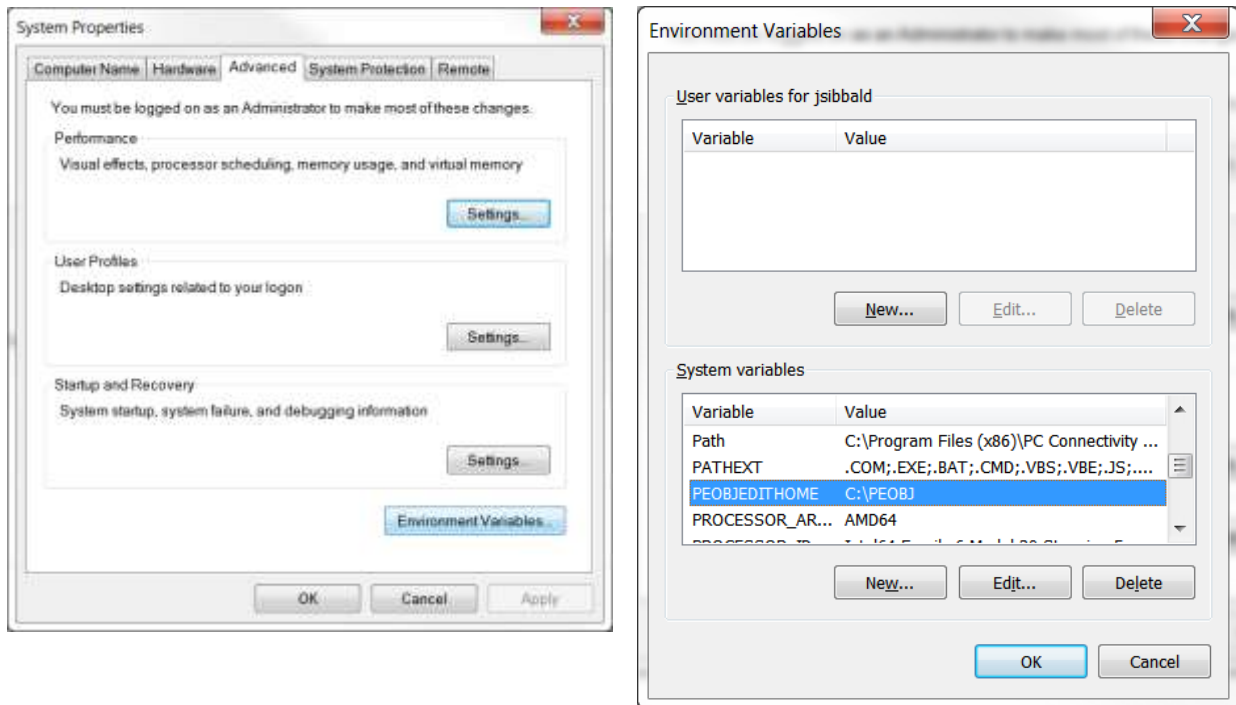


## Adding the OSTN02 NTV2 transformation to ArcGIS Desktop, ArcReader and ArcGIS Server

Add an Environment Variable of PEOBJEDITHOME to the System Variables with the value of the folder where the GEOGRAN file will reside (e.g. C:\PEOBJ )



In this folder create a file (with no extension) called GEOGRAN (or copy and rename the one attached to this forum)



The content of the GEOGTRAN file (each GEOGTRAN entry is a separate line) is

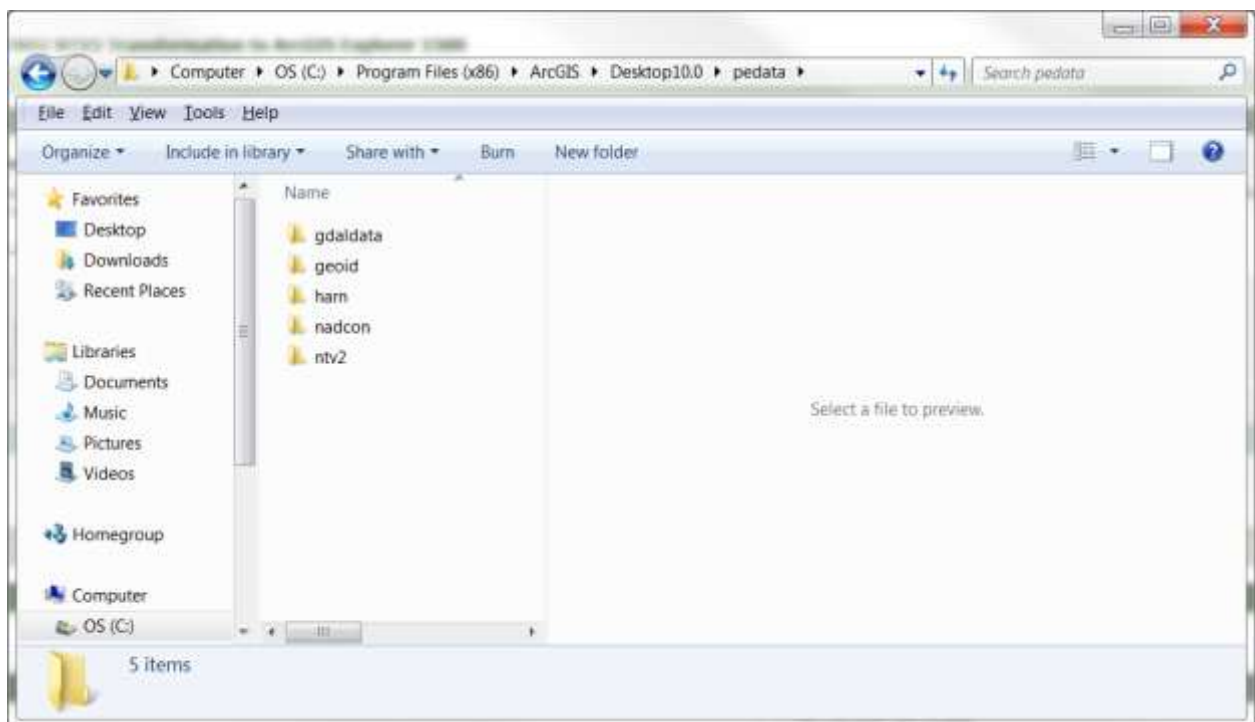
```
GEOGTRAN, 208339, "OSGB_1936_To_WGS_1984_OSTN02_NTV2",  
PE_GCS_OSGB_1936, PE_GCS_WGS_1984, PE_MTH_NTV2, PE_PAR_NAME_DATASET,  
"Dataset_greatbritain/OSTN02_NTV2"  
GEOGTRAN, 208338, "OSGB_1936_To_ETRS_1989_OSTN02_NTV2",  
PE_GCS_OSGB_1936, PE_GCS_ETRS_1989, PE_MTH_NTV2,  
PE_PAR_NAME_DATASET, "Dataset_greatbritain/OSTN02_NTV2"
```

After downloading the NTV2 file from

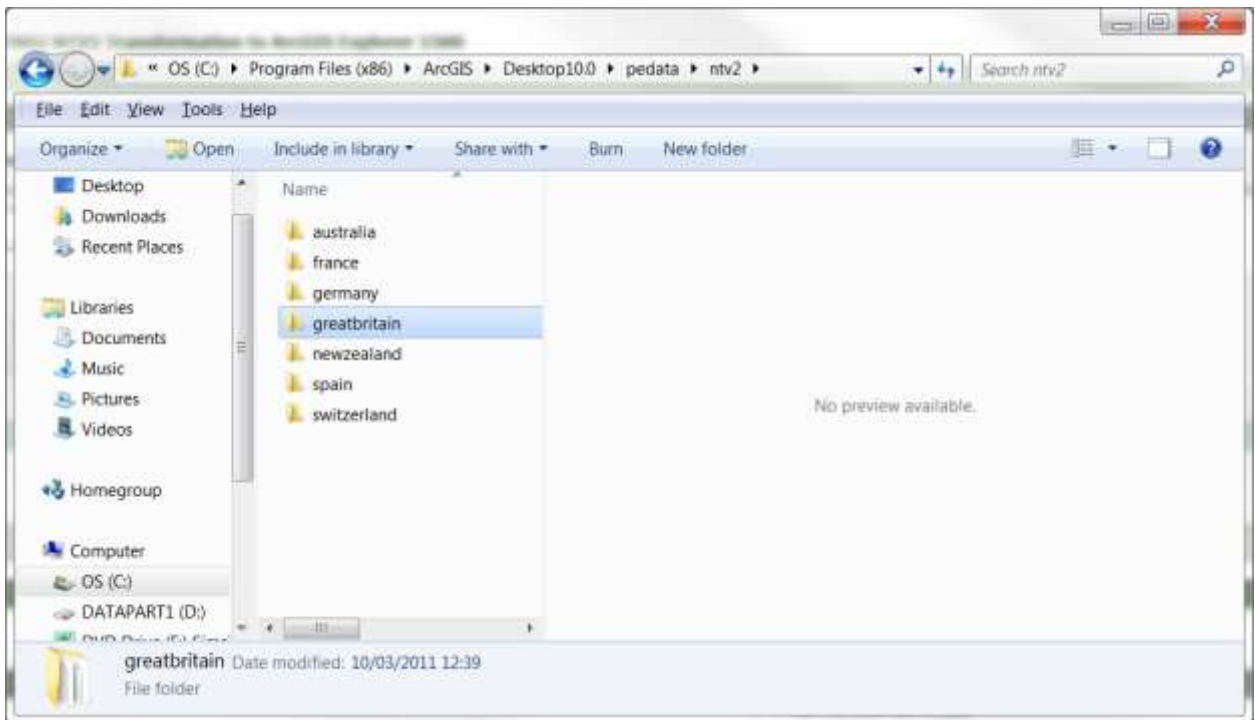
[http://www.ordnancesurvey.co.uk/oswebsite/gps/docs/OSTN02\\_NTV2\\_DataFiles.zip](http://www.ordnancesurvey.co.uk/oswebsite/gps/docs/OSTN02_NTV2_DataFiles.zip)

Unzip it and go to the pedata folder in the Desktop10.0 folder

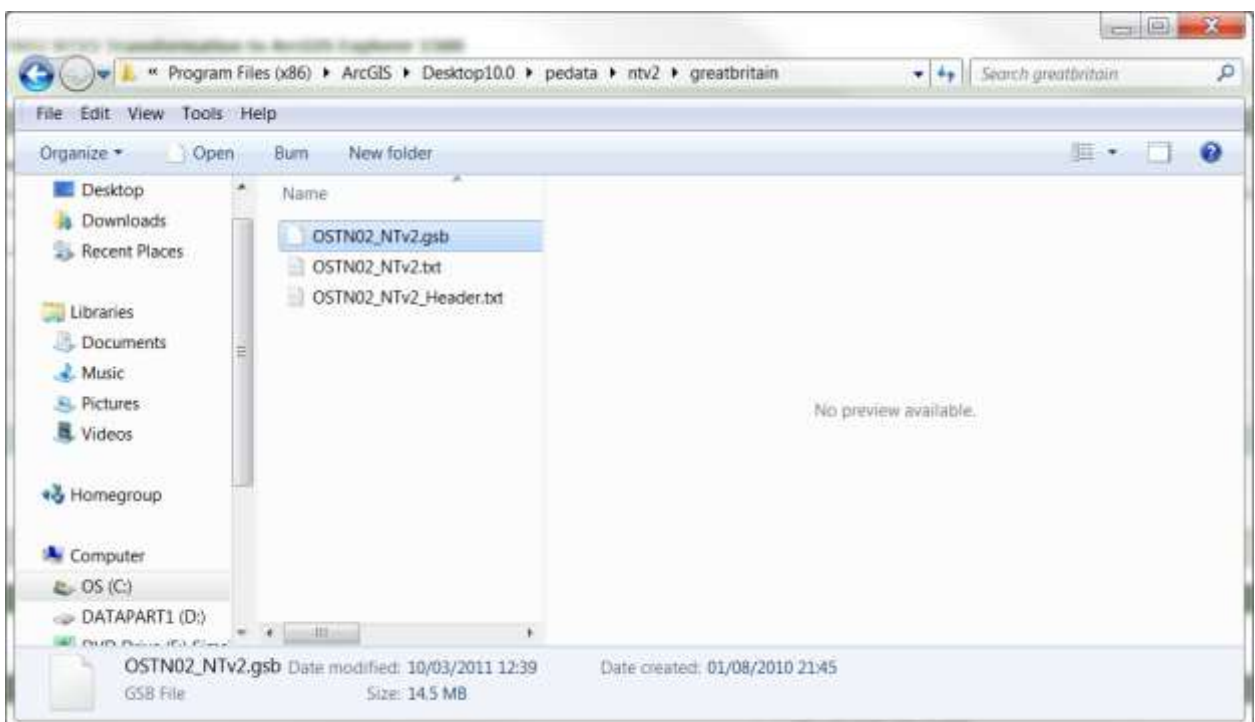
On a 64 bit machine this will be in Program Files (x86)

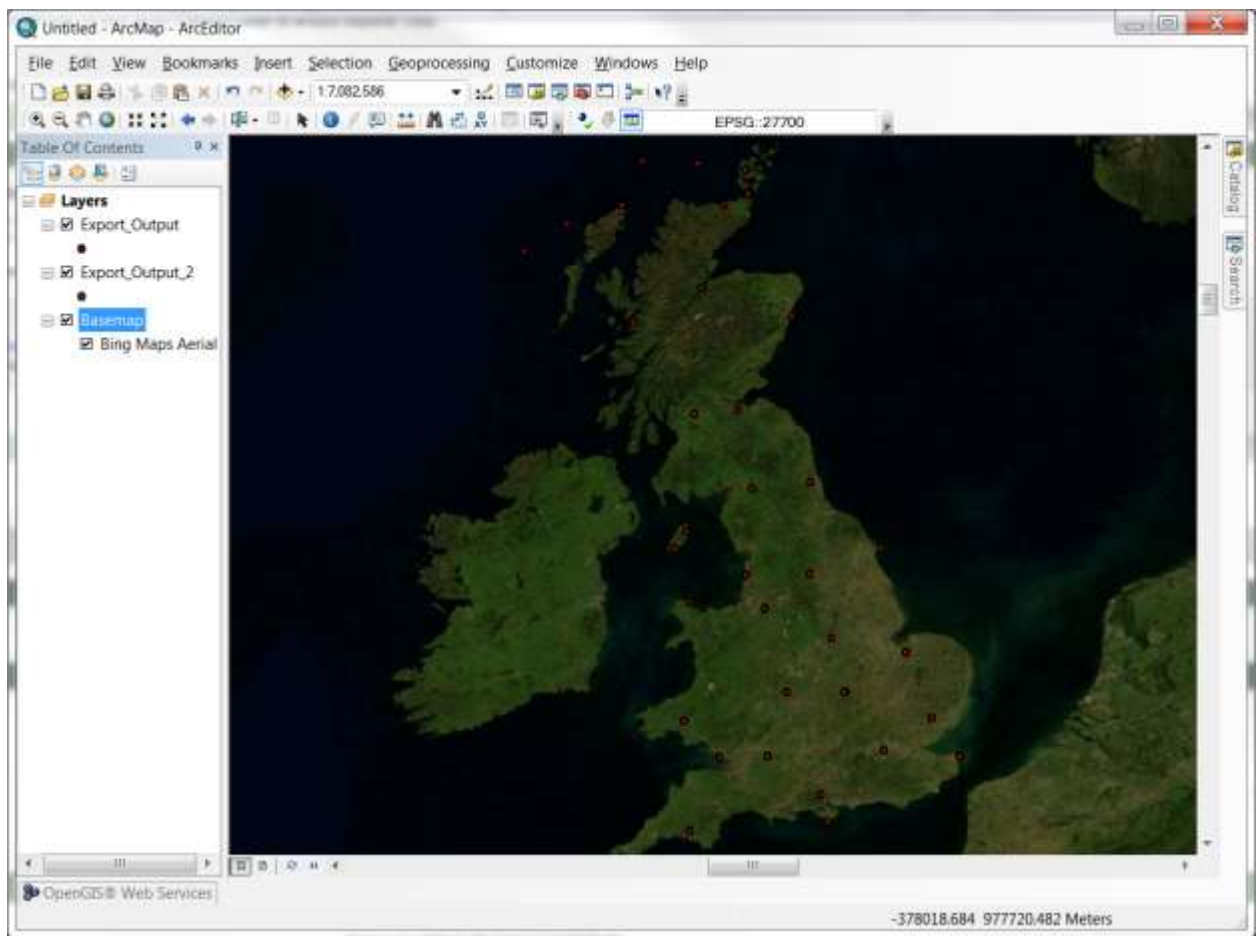


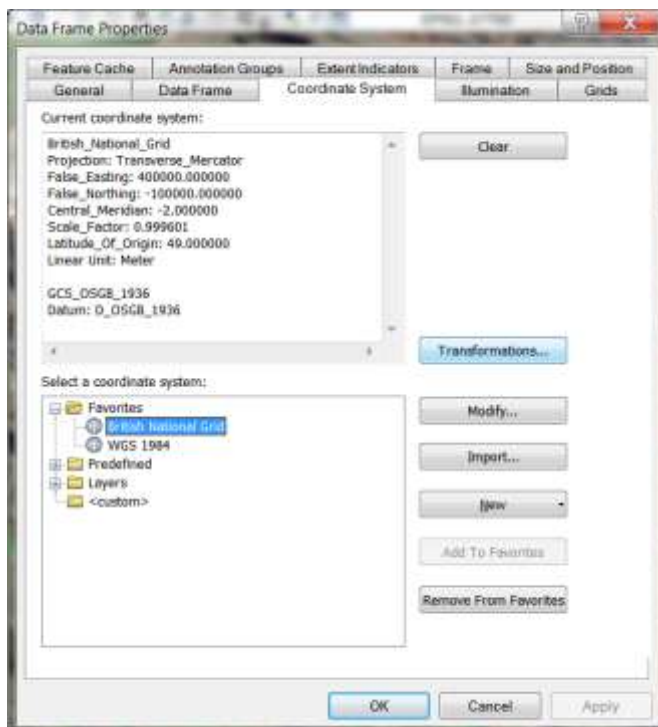
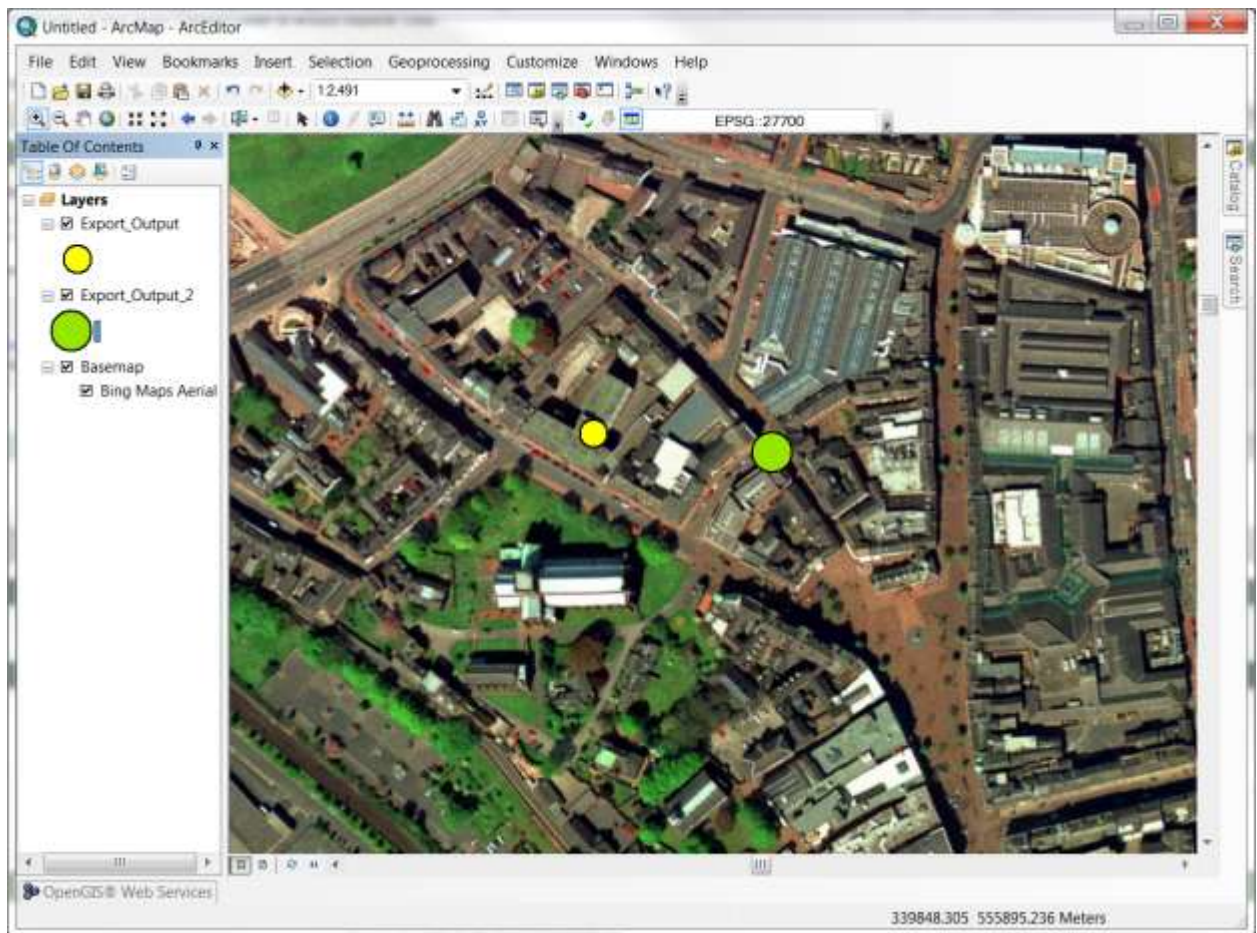
Open the ntv2 folder and create a new folder called "greatbritain" (one word, no spaces and all lowercase)



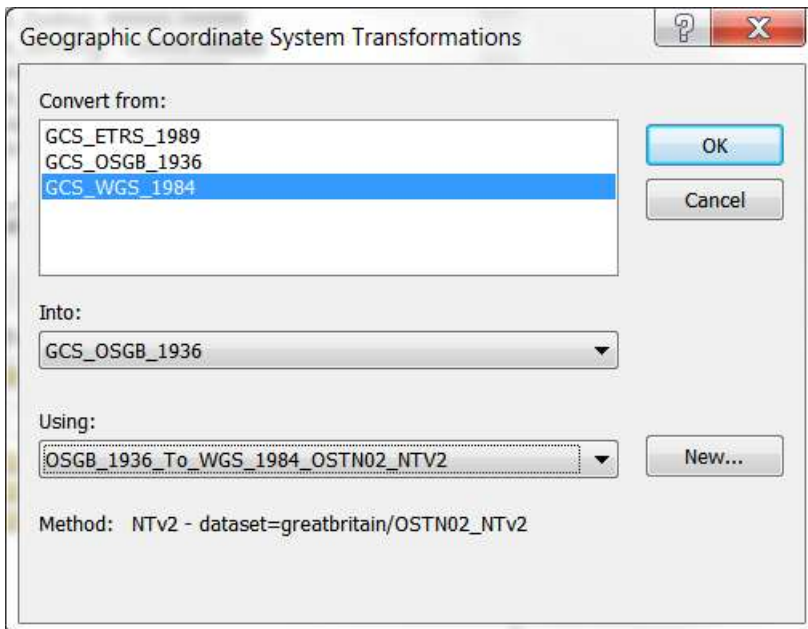
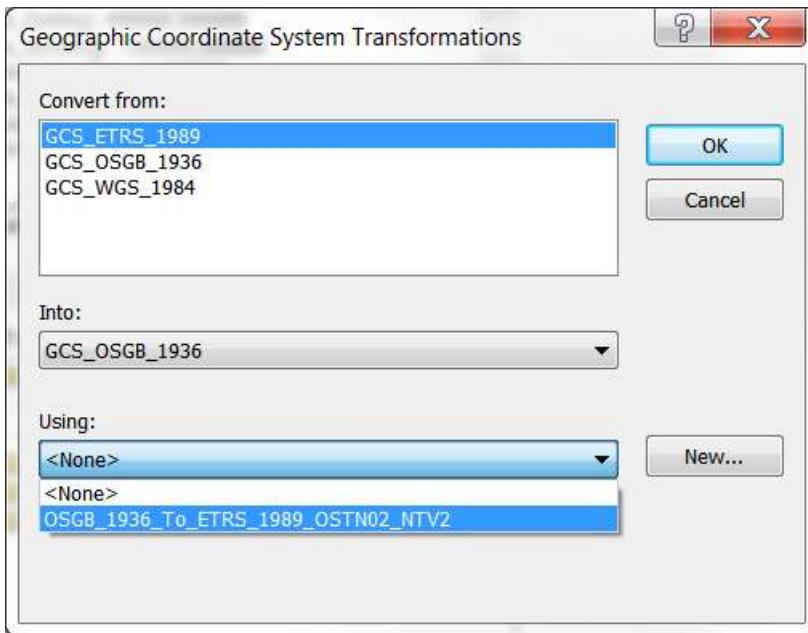
Into this folder place the unzipped OSTN02\_NTv2.gsb file which you downloaded

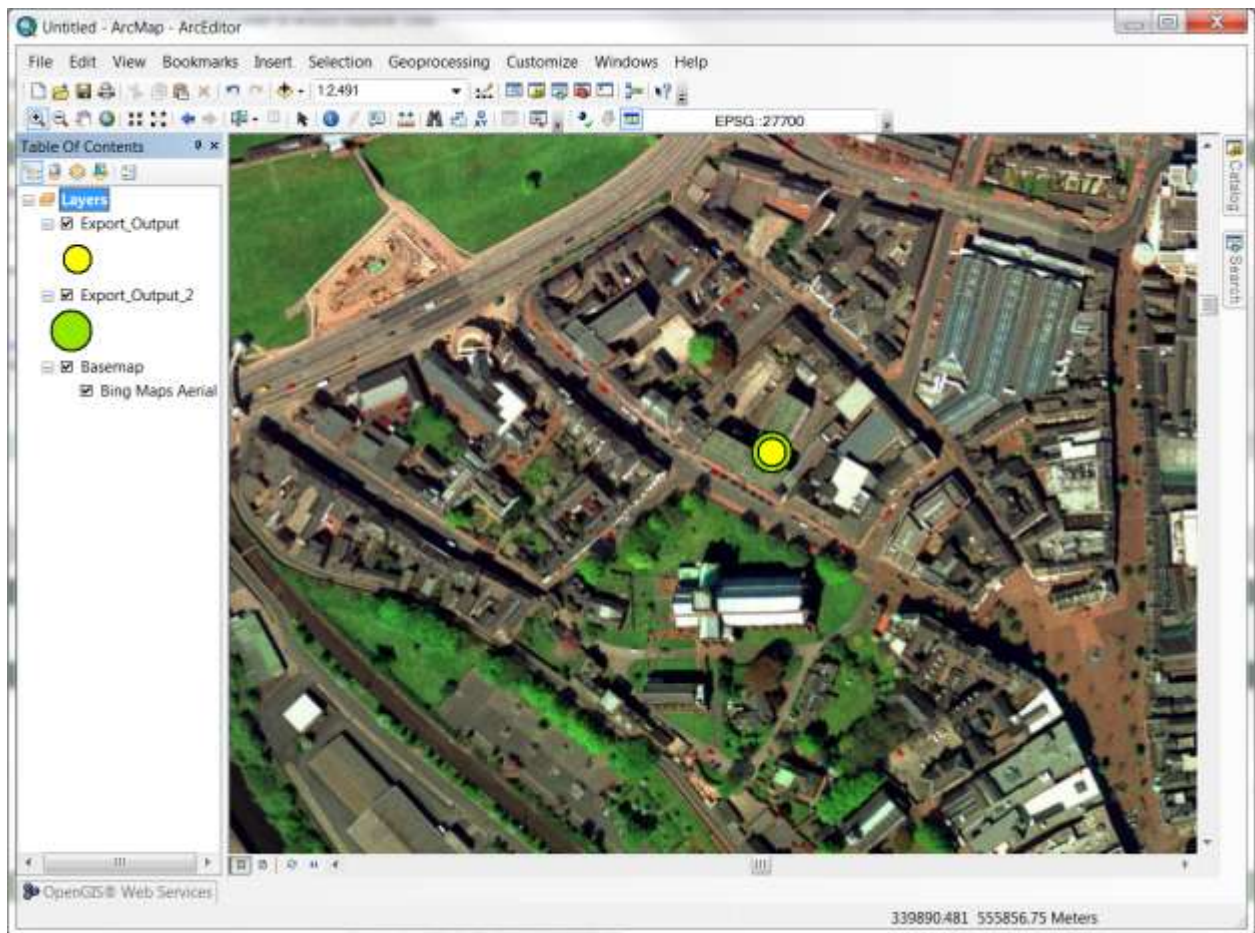






The new transformations are in the drop down





After applying the pins are coincident or within 0.001 of a metre.

In order to get this to work for ArcReader and ArcGIS Server the "greatbritain" folder with the .gsb file needs to be copied into the respective padata/ntv2 folder.

This can also be applied to ArcGIS Desktop 9.3.1 (9.3.1 Server is not verified) and ArcGIS Explorer 1500.