

**esri**

Fabric History Toolbar Parcel Editor Add-In

ArcGIS Parcel Editor Development Team
Rev 1.0 August, 2013

This Add-in is available [here](#).

Overview

This Add-in will be useful for the following:

- Changing the history information on a large number of selected parcels in a single operation.
- Updating the history information on parcel lines and points by propagating it from the selected parcels.

The parcel fabric model stores historic information on all parcels, parcel lines, and parcel points. Each parcel has a set of records that include its lines, and each line references a point, that may be shared with other parcels. Line and point records should have the same historic date information as the parcel that they belong to.

There are cases where a data load results in parcel records being assigned historic information that is not propagated onto its lines and points, creating inconsistency in the history data. The toolbar provided with this Add-in has a command called Update Points and Lines History; it re-assigns dates and historical flag information by copying the information from the selected parcels onto the lines and points that belong to the parcel.

In cases where points shared by parcels have a different historic status, the historic information on points is only updated if all parcels that share the point are historic.

Installation

This Add-In is called RepairFabricHistory.esriAddIn. To install this Add-In you can do one of the following:

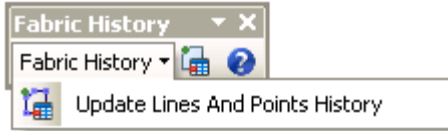
- Double-click on the file from the *Install* directory to install it for use on your individual machine.
- Copy the file to a shared folder used by your organization and then reference that folder through the Options tab on the Add-In Manager dialog. Deploying the Add-In this way will make it accessible to anyone that can get to the shared folder.

Other important install notes:

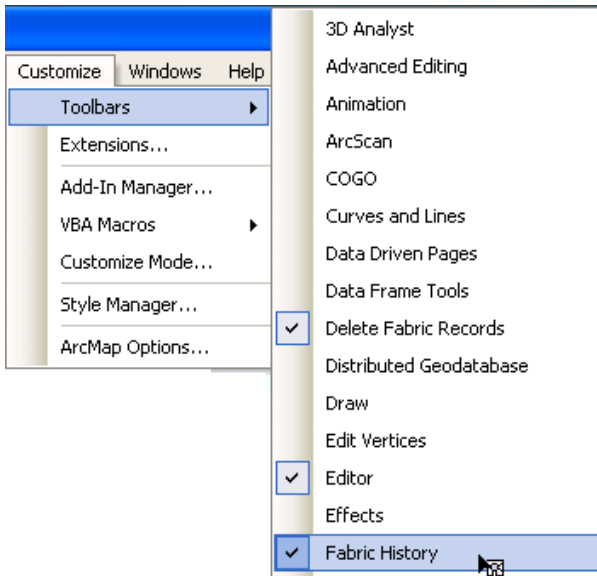
- If you had a prior version of the Add-In installed, then use the Add-in Manager to Delete it.
- Shut down ArcMap (and ArcCatalog if applicable). This is important because you can install an Add-In while ArcMap is running, but the newly installed version of the Add-in is not loaded until you restart.

- Empty the Recycle Bin. This is optional, but ensures that no deleted instances of the prior version can be mistakenly re-referenced.
- Install the new Add-in (unless you already did that while ArcMap was running)
- Restart ArcMap or ArcCatalog, and begin using the new functions.

After installing the Add-in, the new Delete Parcel Fabric Records toolbar is added to ArcMap.



If it is not visible you can access it by clicking Customize->Toolbars, and then checking the Fabric History toolbar.



You can confirm the install by clicking Customize->Add-In Manager to see the date and the version:



Tools to update and repair history information for parcels.

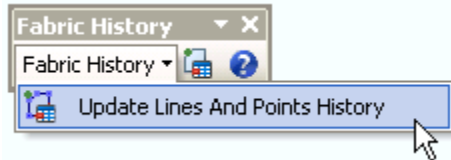
Types:

- ☑ Commands
 - ☑ Category: Add-ins
 - Change Date By Fabric Layer... (Button)
 - Update Lines And Points History (Button)
 - Change History On Selected Parcels... (Button)
 - Help... (Button)
- ☑ Toolbars
 - Fabric History
- ☑ Menus

Using the *Update Lines And Points History* Tool

This tool is used on parcels that have had history stored, but that have lines and points that do not match the history fields on the parcels that they belong to. This can happen, for example, after a data load, where historic information is available on the source polygons but is not present on the lines.

To use this tool, select the parcels that you want to update, click the Fabric History drop-down menu, and then click Update Lines And Points History.

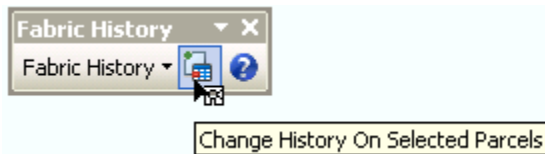


A progress bar is displayed and you can cancel the operation by clicking the Cancel button.

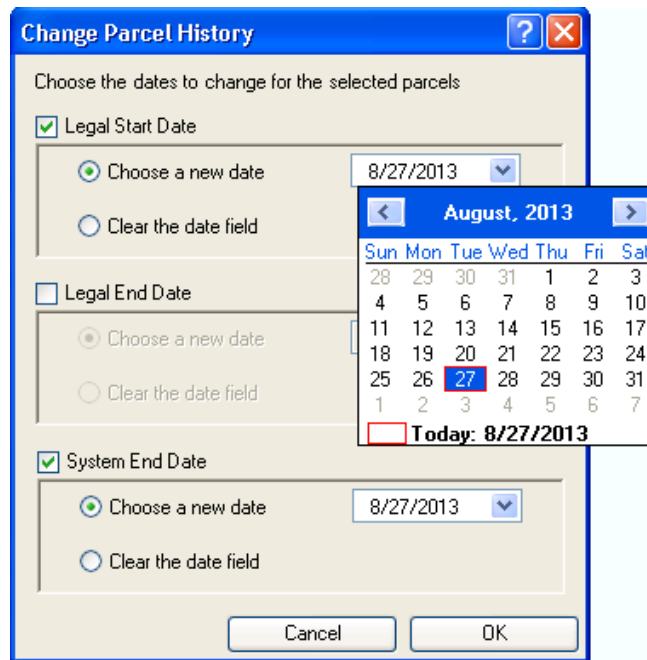
Using the *Change History on Selected Parcels* Tool

This tool is used to update the history fields on all records for a parcel, including the lines and points that define the parcel record. This provides a quick way to update the history records, without having to navigate the relationships from the parcel to the lines, and to calculate the fields for each table as separate steps.

To use this tool, select the parcels that you want to change historical dates for, and then click Change History On Selected Parcels.



Make the required choices on the Change Parcel History dialog, and then click OK.



If you'd like to abort the process, click Cancel on the progress dialog.