

**esri**

Fabric Plan Tools

SDK sample Add-In

ArcGIS Parcel Editor Development Team
Rev 1.3 November, 2011

Overview

This Add-in will be useful for the following:

- Finding sets of plans in the parcel fabric that have the same name.
- Merging fabric plans together by transferring parcels from each repeat plan into the first plan of the repeated group.
- Finding and fixing parcels that have been orphaned from their plan.
- Learning how to use ArcObjects to manage the relationship between fabric parcels and fabric plans.

The parcel fabric model allows multiple plan records to be stored using the same name string. For most purposes this is not desired, but can sometimes occur as a result of the data loading process used with the 10.0 version of the Load a Topology to a Parcel Fabric geo-processing tool.

There are also cases where data load results in parcels getting assigned a plan identifier for a record in the plans table that does not exist.

Every parcel belongs to a fabric Plan. The code provided with this tool is a good starting point for learning how to edit parcel fabric tables using ArcObjects, and for getting an understanding of the relationship between the fabric parcels and the fabric plans.

Installation

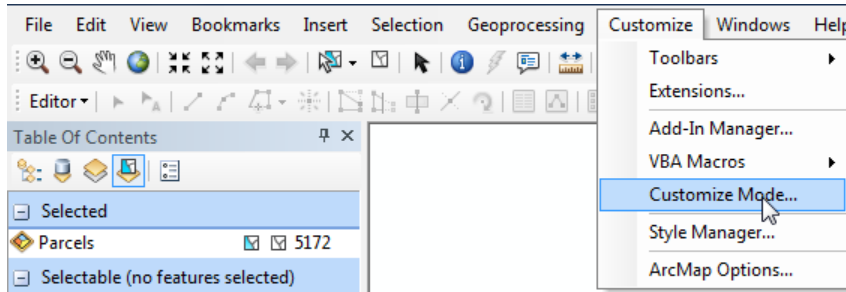
This Add-In is called FabricPlanTools.esriAddIn. To install this Add-In you can do one of the following:

- Double-click on the file from the *Install* directory to install it for use on your individual machine.
- Copy the file to a shared folder used by your organization and then reference that folder through the Options tab on the Add-In Manager dialog. Deploying the Add-In this way will make it accessible to anyone that can get to the shared folder.

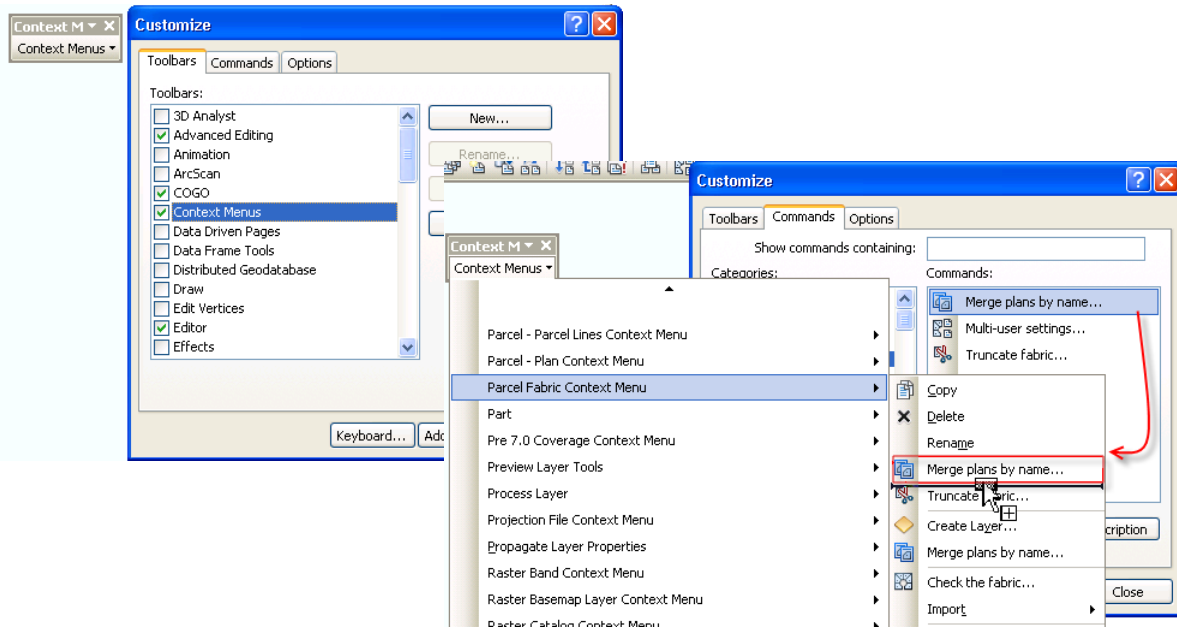
After installing the Add-in, two tools are available:

1. *Merge Plans By Name*
2. *Fix Parcels With No Plan*

These tools can be placed on any toolbar by using the Customize dialog. You can find the tool to merge plans in the category called "Add-ins: Parcel Fabric." A good place for these tools is on the Parcel Fabric context menu.

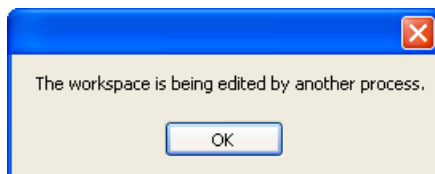
Step 1:Step 2:

Drag-and-drop the tools onto the Parcel Context menu or any other toolbar:



Using the *Merge Plans By Name* Tool

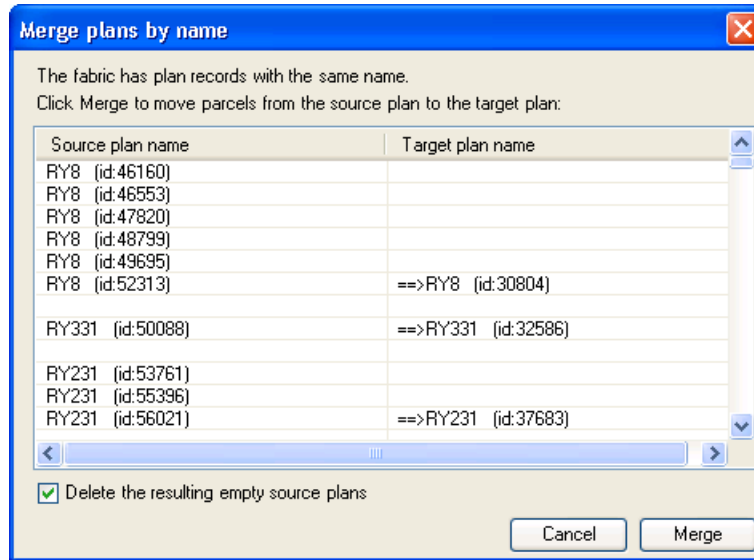
To use the *Merge Plans By Name* tool, you need to first make sure that the fabric is *not* currently being edited. (The tool will work on versioned or un-versioned fabrics). If the fabric is being edited when you click the tool's button, then the following message will appear:



If you see this message then click Parcel Editor -> Stop Editing

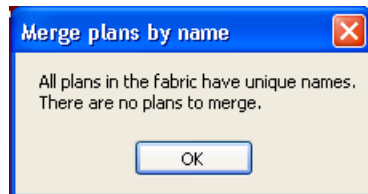
- Select the fabric in the Catalog window
- Click the Merge plans by name tool button (first right-click the fabric to access the context menu if you placed the button there)

- If there are any repeated plan names found in the fabric, then a dialog is displayed listing the repeated plans:

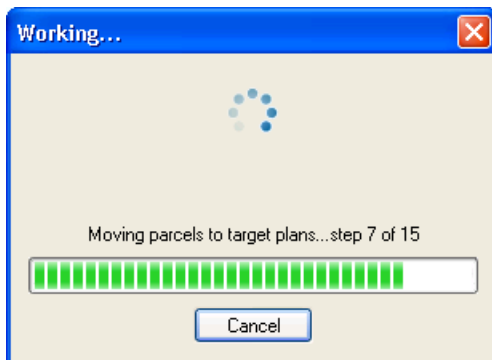


- Click the Merge button to move all parcels into the same plan.
- Click Cancel to exit the dialog without making any changes.
- The merge process first moves parcels from the repeat plans into the first plan of the repeat group. To move the parcels without deleting the resulting empty plans, uncheck the box.

If, after pressing the button, there are no plans to Merge then the following dialog is displayed:



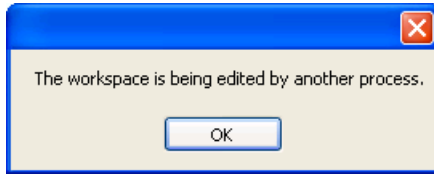
When Merging plans with many parcels, a progress bar is displayed:



The progress bar has been implemented with a cancel tracker. You can click the Cancel button at any time to stop the process; none of the plans will be merged or deleted.

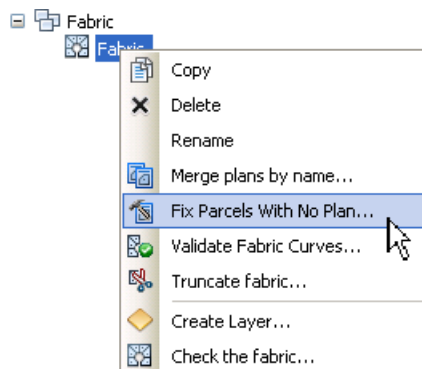
Using the *Fix Parcels With No Plan* Tool

To use the *Fix Parcels With No Plan* tool, you need to first make sure that the fabric is *not* currently being edited. (The tool will work on versioned or un-versioned fabrics). If the fabric is being edited when you click the tool's button, then the following message will appear:

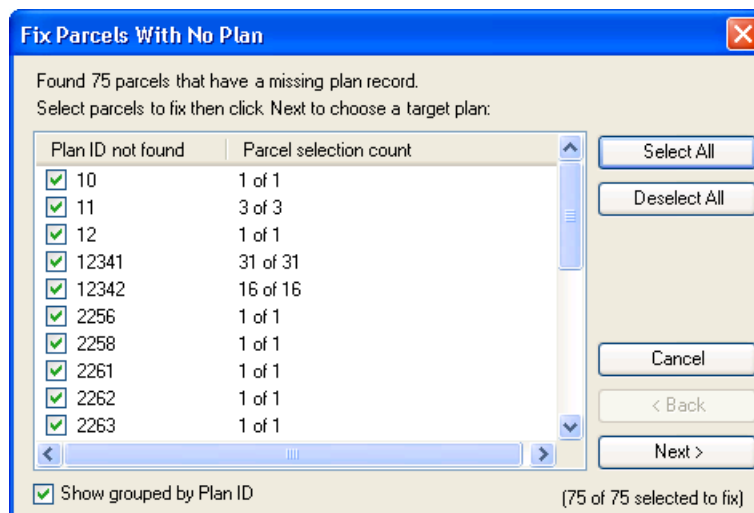


If you see this message then click Parcel Editor → Stop Editing

- Select the fabric in the Catalog window.
- Click the *Fix Parcels With No Plan* button (first right-click the fabric to access the context menu if you placed the button there.)

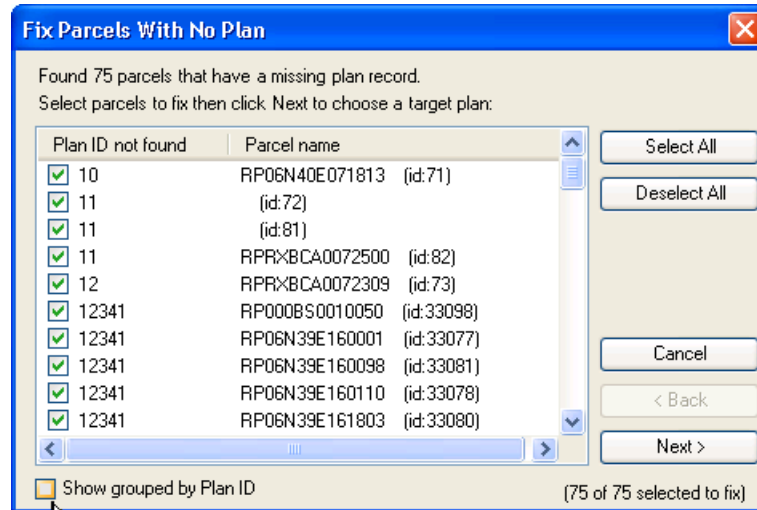


If there are any parcels that have been orphaned from their plan, they are listed in the “Fix Parcels With No Plan” dialog.



You can select and view the Parcels that you'd like to be repaired. By default the parcels are listed into groups by the Plan Id value that does not exist in the Plan table.

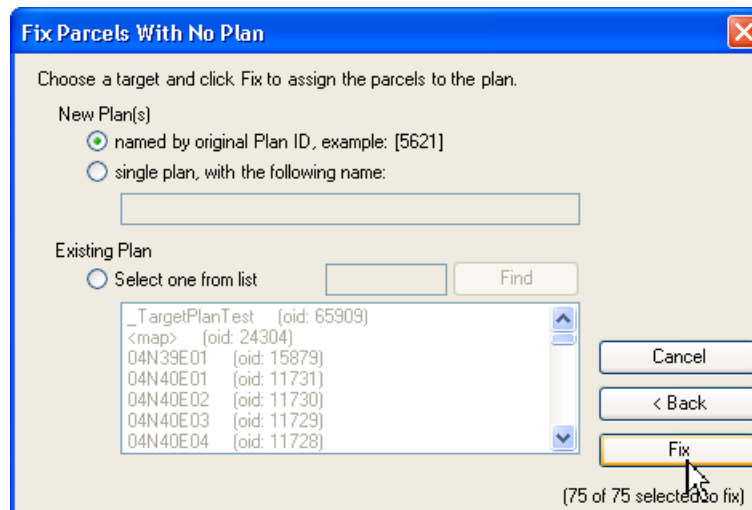
You can also view and select the parcels for repair individually, by unchecking the box “Show grouped by Plan ID”



Once the parcels that you'd like to repair have been selected, click the Next button to choose a target plan.

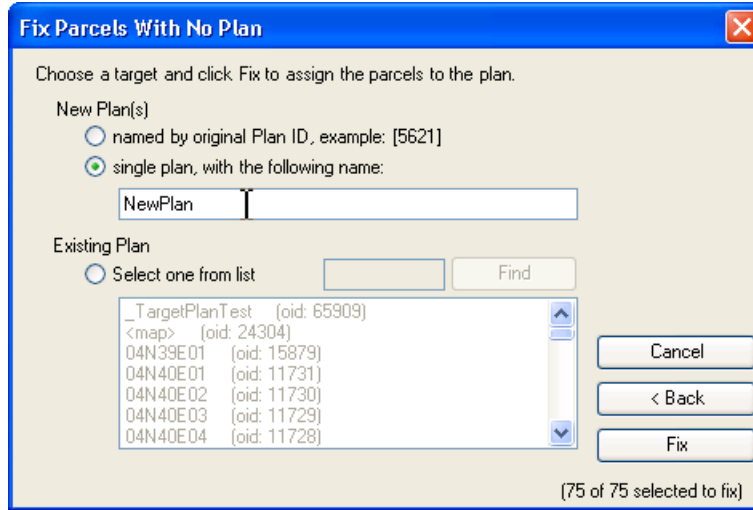
You can assign orphaned parcels to a source plan in 3 different ways.

1. Named by original Plan ID

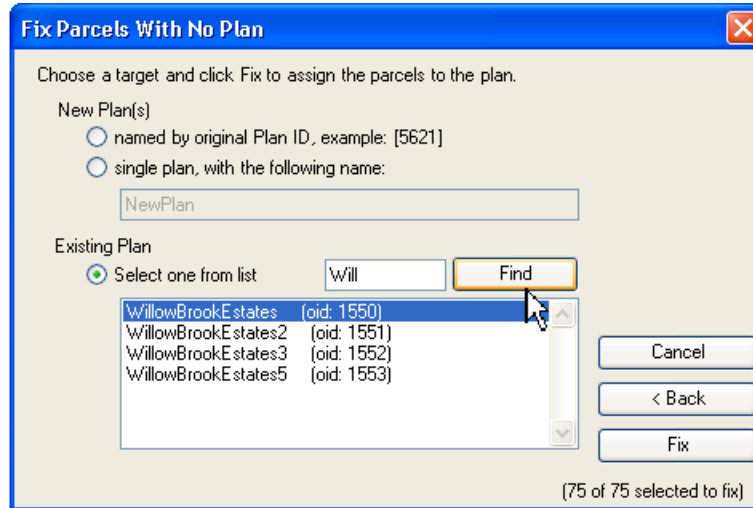


This option will use the Plan ID found on the orphaned parcel, and create a single new plan with that name. Any other parcels that reference the same missing Plan ID will be added to that same plan. This is an easy way to keep the original plan grouping for the parcels. These plan names will be bracketed by the [] characters as prefix and suffix respectively, and the Plan description will read: “Recovered missing plan.” All new plans created will use the same bearing and distance units as the system default <map> plan.

- The second option is to place all parcels into a single new Plan. This gives you the option to create a new plan with a specific name that you provide. Click 'Fix' to repair the selected set of parcels that you chose on the previous page. As with option 1, the new plan will use the same bearing and distance units as the system default <map> plan.



- The third option is to choose an existing Plan. You can filter the list of choices by typing the first few letters of the plan name and clicking the Find button.



Parcel and Plan Information

When using these tools it is important to understand the relationship between the fabric's plans and parcels. For complete information on the fabric data model, please see the on-line help topic for the [parcel fabric data model](#).