

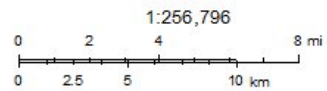
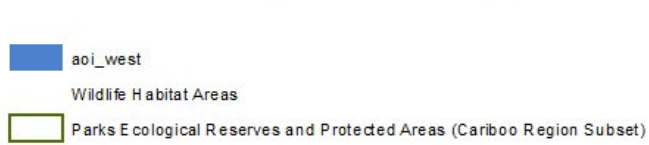
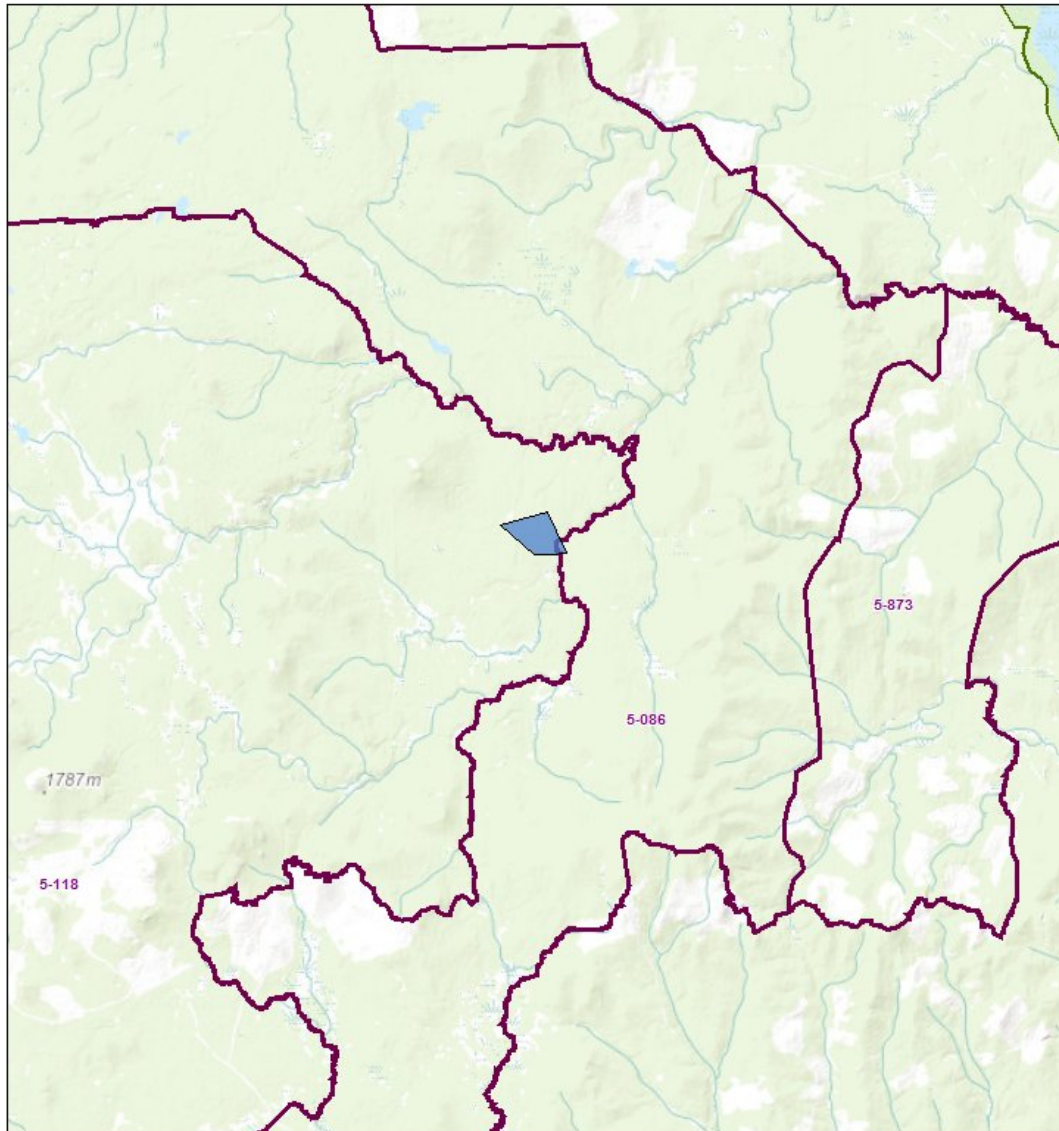


# Habitat Report (sample)

## Area of Interest (AOI) Information

Area : 123.4 hectares

Mar 1 2018 11:49:52 Pacific Standard Time



Sources: Esri, HERE, Garmin, Intermap, increment P Corp., GEBCO, USGS, FAO, NPS, NRCAN, GeoBase, IGN, Kadaster NL, Ordnance Survey, Esri Japan, METI, Esri China (Hong Kong), swisstopo, © OpenStreetMap contributors, and the GIS User Community

## Summary

| Name                                                                  | Count | Area(hectares) | Length(km) |
|-----------------------------------------------------------------------|-------|----------------|------------|
| Wildlife Habitat Areas                                                | 2     | 123.31         | N/A        |
| Parks Ecological Reserves and Protected Areas (Cariboo Region Subset) | 0     | 0              | N/A        |
| Habitat Model - Summer Fall (2017) - West                             | 2     | 58,985.06      | N/A        |
| Habitat Model - Winter Forest Dwelling (2017) - West                  | 5     | 123.20         | N/A        |
| Habitat Model - Summer (2001) - West                                  | 0     | 0              | N/A        |
| Habitat Model - Winter Forest Dwelling (2001) - West                  | 2     | 123.31         | N/A        |
| Habitat Model - Winter Alpine (2001) - West                           | 2     | 102.12         | N/A        |

## Wildlife Habitat Areas

| # | TAG   | TIMBER_HARVEST_CODE      | Area(hectares) |
|---|-------|--------------------------|----------------|
| 1 | 5-118 | NO HARVEST ZONE          | 116.96         |
| 2 | 5-086 | CONDITIONAL HARVEST ZONE | 6.35           |

## Habitat Model - Summer Fall (2017) - West

| # | Habitat_Rating_Text | Area(hectares) |
|---|---------------------|----------------|
| 1 | Moderate            | 58,984.05      |
| 2 | Poor                | 1.00           |

## Habitat Model - Winter Forest Dwelling (2017) - West

| # | Habitat_Rating_Text | Area(hectares) |
|---|---------------------|----------------|
| 1 | Very Good           | 69.21          |
| 2 | Good                | 53.98          |

## Habitat Model - Winter Forest Dwelling (2001) - West

| # | Habitat_Rating_Text        | Area(hectares) |
|---|----------------------------|----------------|
| 1 | Best (probability > 0.6)   | 96.40          |
| 2 | Better (probability > 0.5) | 26.91          |

## Habitat Model - Winter Alpine (2001) - West

| # | Habitat_Rating_Text        | Area(hectares) |
|---|----------------------------|----------------|
| 1 | Good (probability > 0.4)   | 80.15          |
| 2 | Better (probability > 0.5) | 21.96          |

\*\*Sample report\*\*