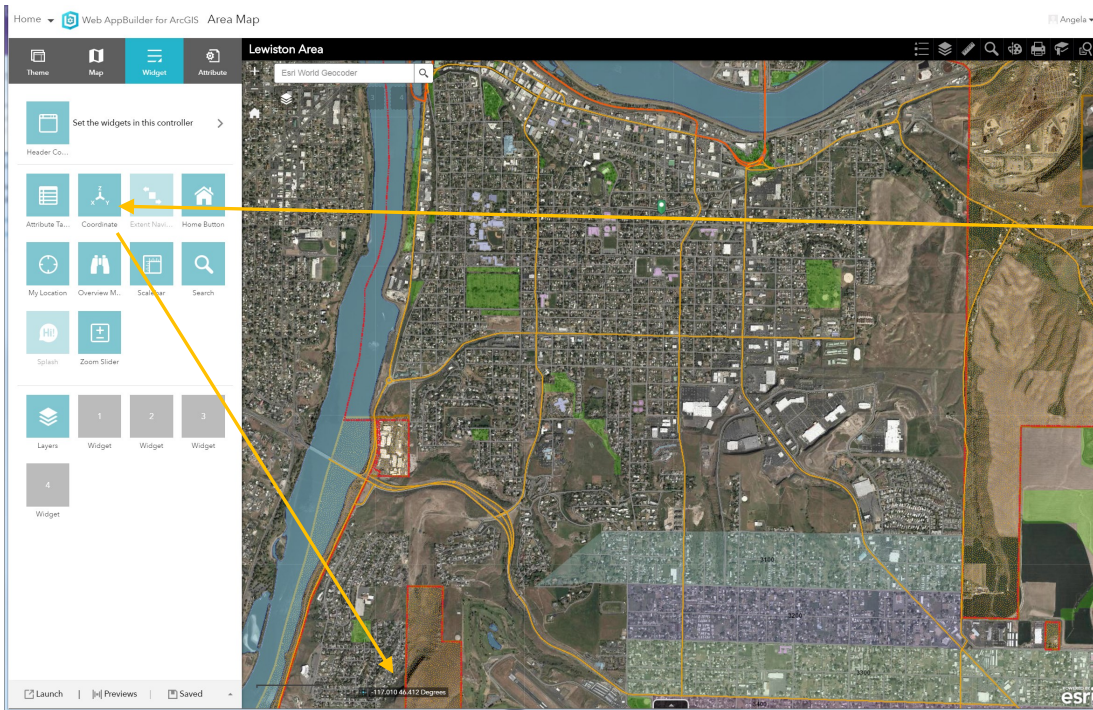


ESRI Web AppBuilder - Setting XY for Web AppBuilder when using local coordinate basemap

Steps

1. Edit Web App



2. Read Document Coordinate Widget

<http://doc.arcgis.com/en/web-appbuilder/create-apps/widget-coordinates.htm>

These directions will ask for information contained in the links at the end of the article.

3. Click Widget tab

4. Click to edit Coordinate widget



5.

Configure Coordinate

Coordinate

[change widget icon](#) [Learn more about this widget](#)

By default, coordinates will display in current map's coordinate system. To get coordinates in other coordinate systems, you need to add them and specify appropriate transformations.

[Add Output Coordinate System](#)

Output Coordinate System Name	Actions
WGS_1984_Web_Mercator_Auxiliary_Sphere	

Round coordinates to: decimal places

☒ Show thousand separators

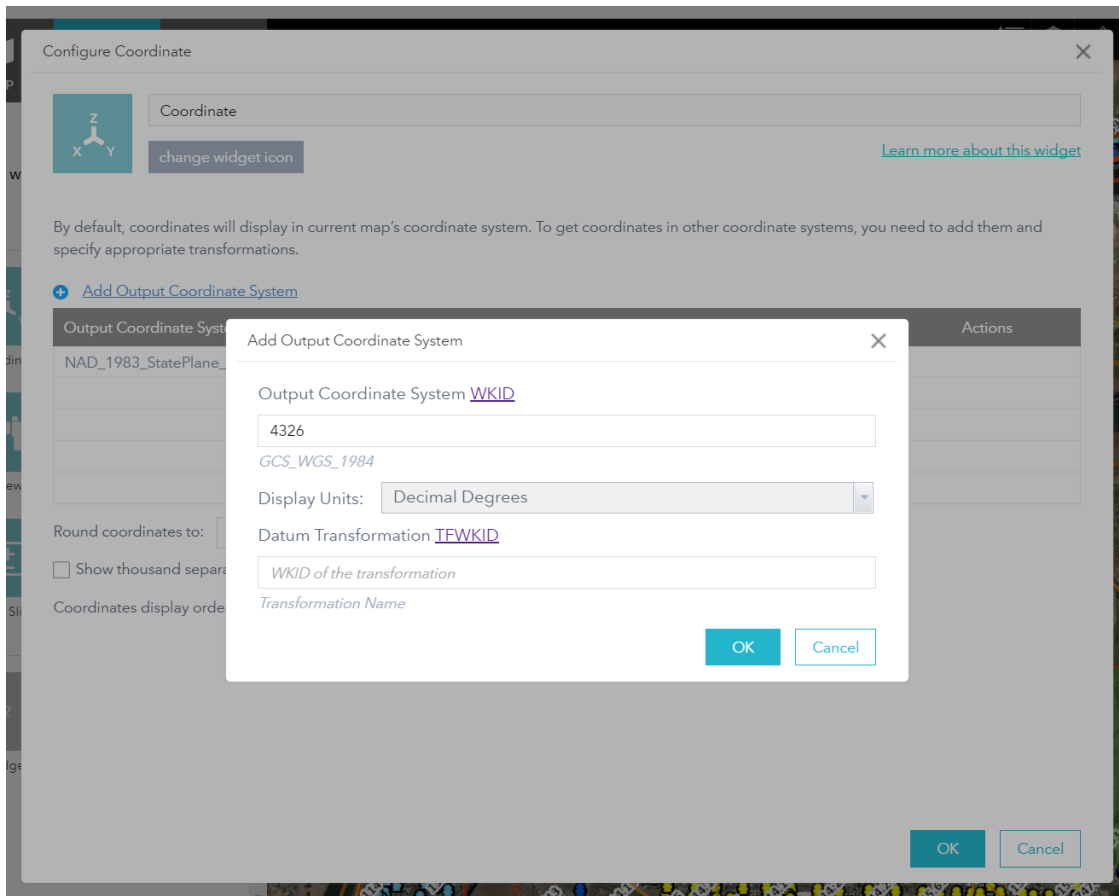
Coordinates display order: ☒ Longitude / Latitude(X, Y) ☐ Latitude / Longitude(Y, X)

Click Add output Coordinate System

You will need to know the WKID contained in the links at the end of the article (ESRI defaults to 4326)

You will need to find your transformation id (TFWKID) if needed in the links below.

6.



If it requires a transformation it will ask at this point.

7. Click ok
8. If you have more than one put them in the order you would like them to display
9. Set your number of decimal places—for degrees it needs to be 2
10. Click ok
11. Check your map to make sure it is working the way you anticipated
12. Click Save on your Web App

Coordinate System IDs - WKID (Well-known ID)

https://developers.arcgis.com/javascript/3/jshelp/ref_coordsystems.html

Datum Transformations (WKID)

<http://resources.arcgis.com/en/help/arcgis-rest-api/index.html#//02r3000000r8000000>

How To: Determine which NAD_1983_To_WGS_1984 transformation to use

<http://support.esri.com/technical-article/000005929>