

City of Issaquah GIS Viewers

version 3.x

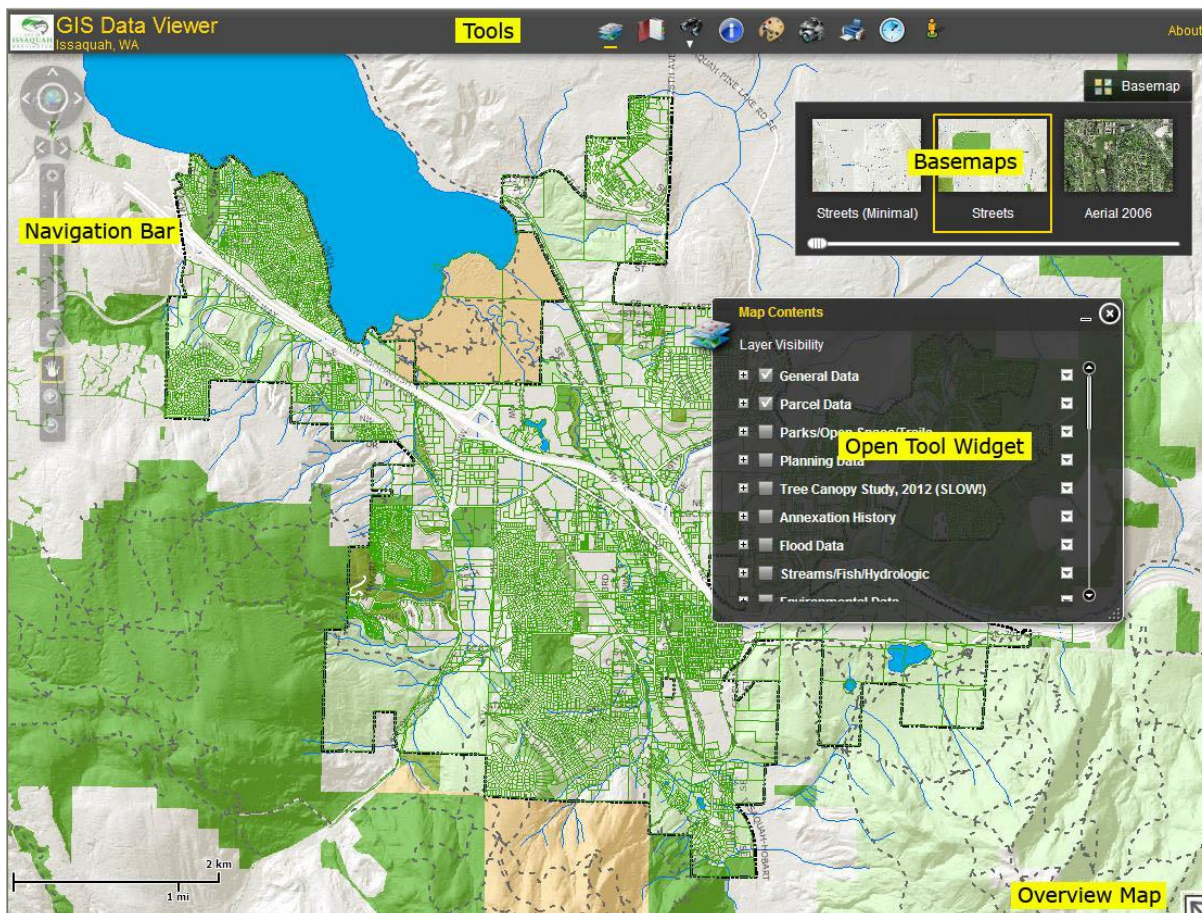
Locating the viewers

In your browser's address bar, simply type 'gis' (without the quotes) and press enter. Tim in I.T. has created a shortcut that takes you to a page of links for each department viewer. Note: some browsers recognize this as a search query and will take you to Bing or another search engine site. In that case, type '<http://gis/>' (again, without the quotes) to get to this link page. For future use, create a favorite on your desktop to load your favorite viewer in one step!

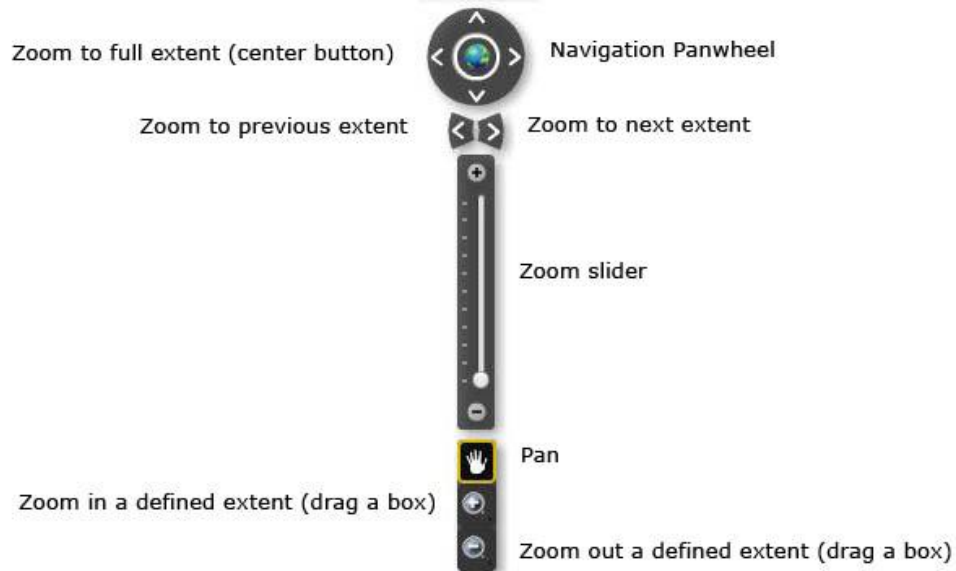
The viewer interface

All of the viewers have the same basic layout and functionality. They differ in the various data available and possibly in the widget tools that are turned on by default. The goal is to have your department's viewer set up, within reasonable limits, with a default configuration that enables you to get started working without much preliminary set up.

Typical interface layout:



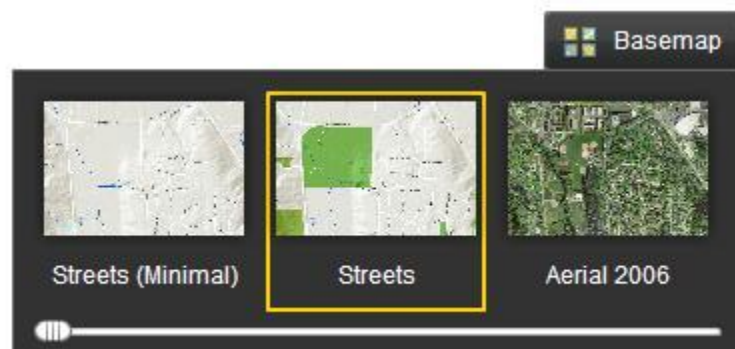
Navigation



Tips:

- The mouse wheel can be used to zoom in and out. Roll the wheel forward to zoom in; roll backward to zoom out.
- Double-click the left mouse button to zoom in on that spot.
- Hold the 'shift' key while dragging a box to zoom in without switching the navigation tool.

Basemaps



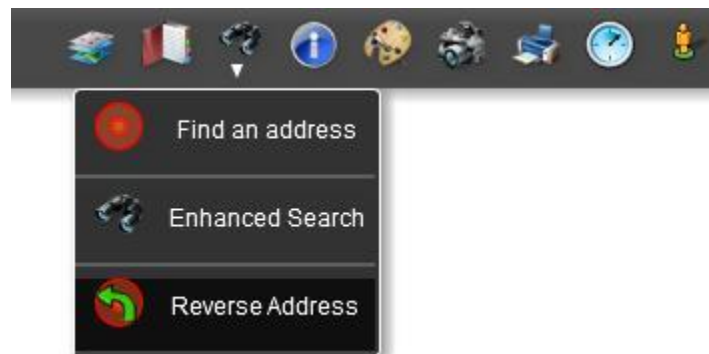
Use the slider to “fade” between basemaps. The “Streets (Minimal)” base is useful if you have data that is shaded or filled in with various colors.

Overview map



Pop up the overview map by clicking on the arrow in the lower right corner of the map window. The red box shows the extent of your view in the main map. Drag the red box to quickly pan the map—it is a quick way to “get across town” in larger steps than panning in the main window.

Tools



The toolbar contains various tool widgets that provide query and advanced search capabilities; printing, drawing and measuring functions; and access to many data layers not visible by default.

Identify

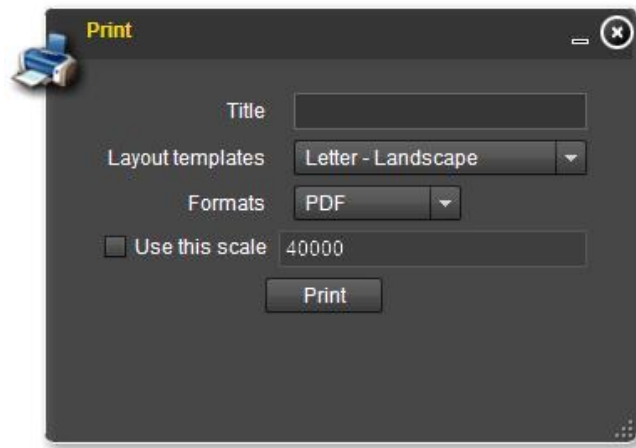


Some tool widgets have multiple panels (think tabs...). The identify tool has a panel for the selection method to be used...



...And a results panel to display the results of the query. The identify tool “drills down” through all of the layers that happen to be turned on and selects and identifies those features with one selection operation. The point selection method is the most popular. Use this tool when you want to get information about various features but do not need to save the results.

Print



The print widget has templates to print letter-sized and 11" x 17" maps in landscape or portrait orientation. These templates include a scalebar and north arrow. You can also print the map only—handy for a screenshot of the map view.

Output formats include pdf, jpg, and other popular image formats.

Produced by:

Brian Oevermann, GISP
GIS Coordinator
City of Issaquah, WA
briano@issaquahwa.gov