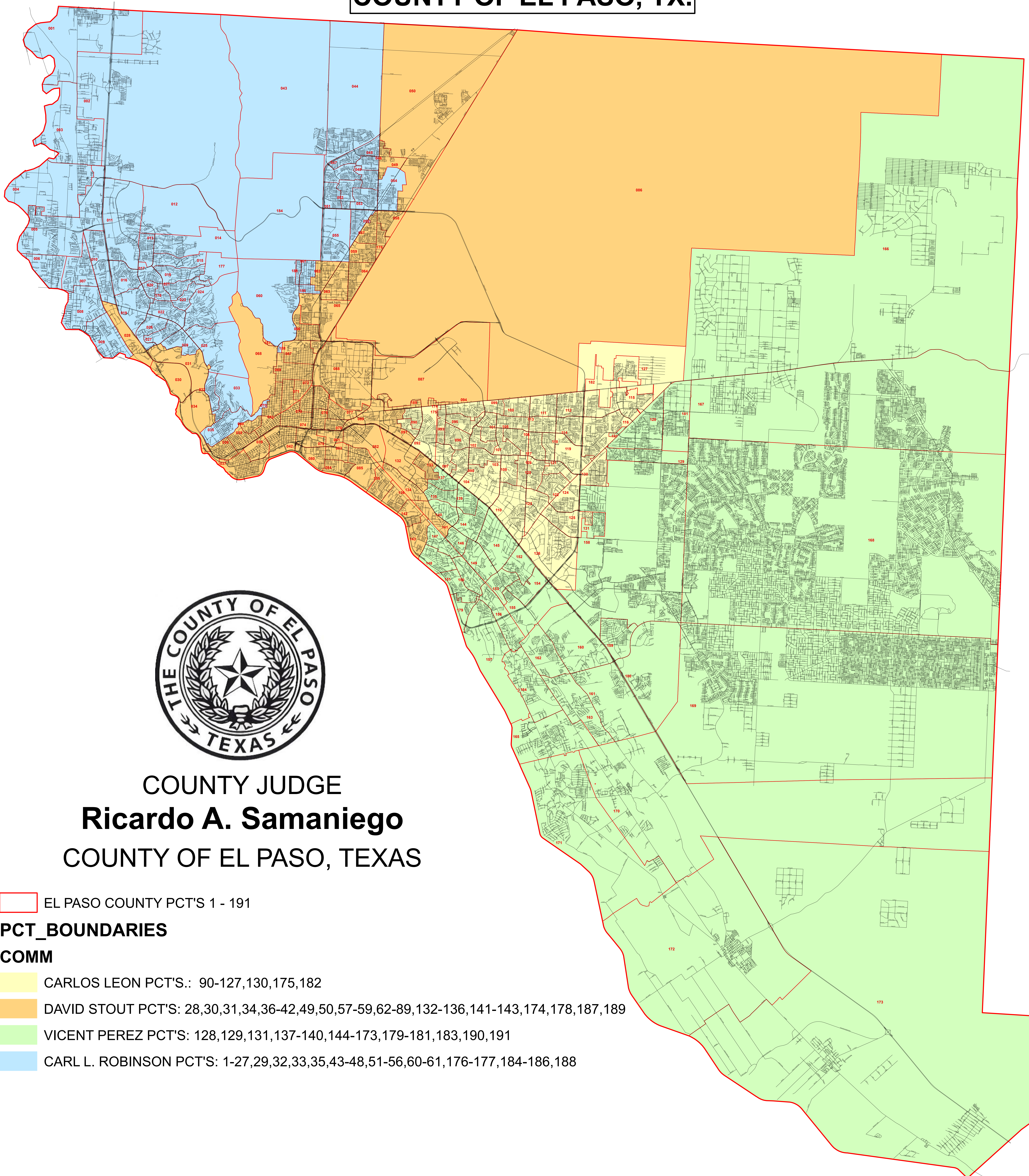


# COUNTY OF EL PASO, TX.



COUNTY JUDGE

**Ricardo A. Samaniego**

COUNTY OF EL PASO, TEXAS

EL PASO COUNTY PCT'S 1 - 191

## PCT\_BOUNDARIES

### COMM

CARLOS LEON PCT'S.: 90-127,130,175,182

DAVID STOUT PCT'S: 28,30,31,34,36-42,49,50,57-59,62-89,132-136,141-143,174,178,187,189

VICENT PEREZ PCT'S: 128,129,131,137-140,144-173,179-181,183,190,191

CARL L. ROBINSON PCT'S: 1-27,29,32,33,35,43-48,51-56,60-61,176-177,184-186,188