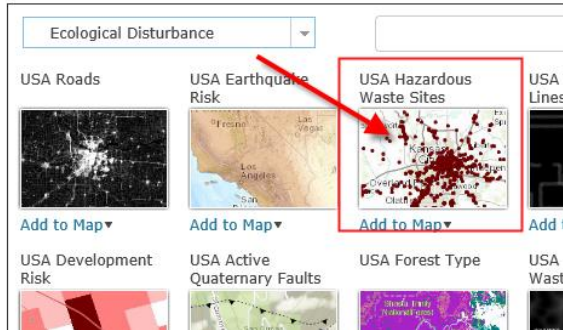


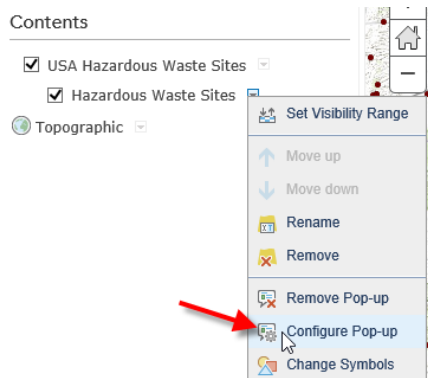
Start a new map.

Add the USA Hazardous Waste Sites as a layer:

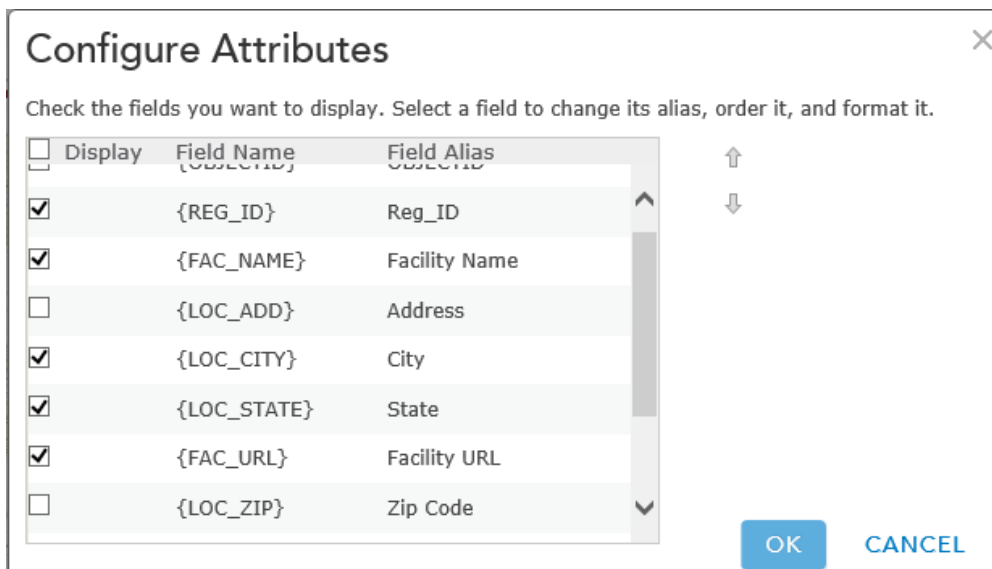
Browse Esri Map Layers



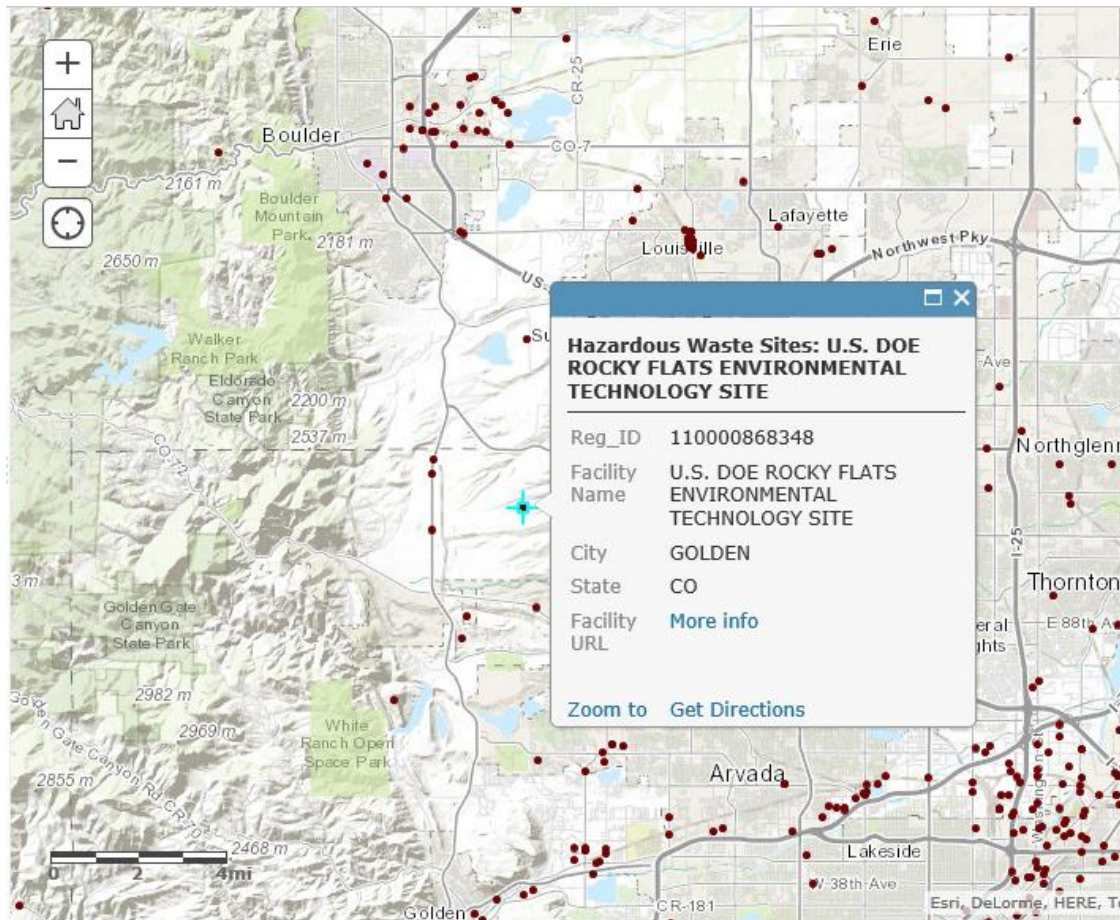
Choose the Configure Popup option on the Hazardous Waste Sites layer:



Choose to use a list of attributes, and select the REG_ID, FAC_NAME, LOC_CITY, LOC_STATE, and FAC_URL:



Zoom in on Colorado, specifically the area between Boulder and Golden and east to Denver. Tap on the indicated site (Rocky Flats, where plutonium triggers used to be assembled during the Cold War).



Click the “more info” link to visit the web site:

http://iaspub.epa.gov/enviro/fii_query_detail.disp_program_facility?p_registry_id=110000868348

The screenshot shows a web browser window with the URL http://iaspub.epa.gov/enviro/fii_query_detail_disp_program_facility?p_registry_id=110000868348. The page header features the EPA logo and navigation links: [LEARN THE ISSUES](#), [SCIENCE & TECHNOLOGY](#), [LAWS & REGULATIONS](#), and [ABOUT EPA](#). The main content area is titled "Envirofacts" and includes a breadcrumb trail: [You are here: EPA Home](#) » [Envirofacts](#) » [Facility Registry Service \(FRS\)](#) » [FRS Facility Query](#). The primary heading is "FRS Facility Detail Report". Below this is a navigation bar with buttons for [Home](#), [Multisystem Search](#), [Topic Searches](#), [System Data Searches](#), [About the Data](#), [Data Downloads](#), [Widgets](#), [Services](#), [Mobile](#), and [Other Datasets](#). A red banner displays the "FRS" logo. To the left is a small image of the facility. To the right, the site name "U.S. DOE ROCKY FLATS ENVIRONMENTAL TECHNOLOGY SITE" is listed, along with its address: 10808 HIGHWAY 93, GOLDEN, CO 804038200, and its EPA Registry ID: 110000868348.

Next if you click on other sites, you'll see that the URL's aren't consistent across each of the sites, so the approach in the blog entry won't really work for this data. But I continued on anyway to verify that the field substitution technique described in the post would work, realizing that it would only work as long as I consistently selected the same site that I use for the URL template, i.e., I'm only trying to validate the technique and not the data.

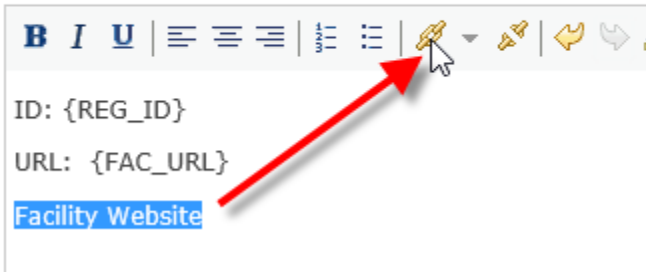
Next I changed the popup type to a custom attribute popup:

The screenshot shows the "Pop-up Properties" configuration window. It includes a description: "Pop-ups display information about features in the layer. Define the pop-up below." Under the "Pop-up Title" section, there is a text input field containing "Hazardous Waste Sites: {FAC_NAME}" and a plus sign icon. Under the "Pop-up Contents" section, there is a "Display:" label followed by a dropdown menu set to "A custom attribute display". At the bottom, there is a green "CONFIGURE" button.

I added a couple of simple attributes to verify the data being passed for the URL through the substituted value. I typed in "Facility Website", highlighted it, and then clicked on the Create Link button.

Custom Attribute Display

Use the area below to define, Create Link lay out the in



B I U | ≡ ≡ ≡ | ≡ ≡ ≡ | ≡ ≡ ≡ | ≡ ≡ ≡ | Create Link | ↶ ↷ ↸

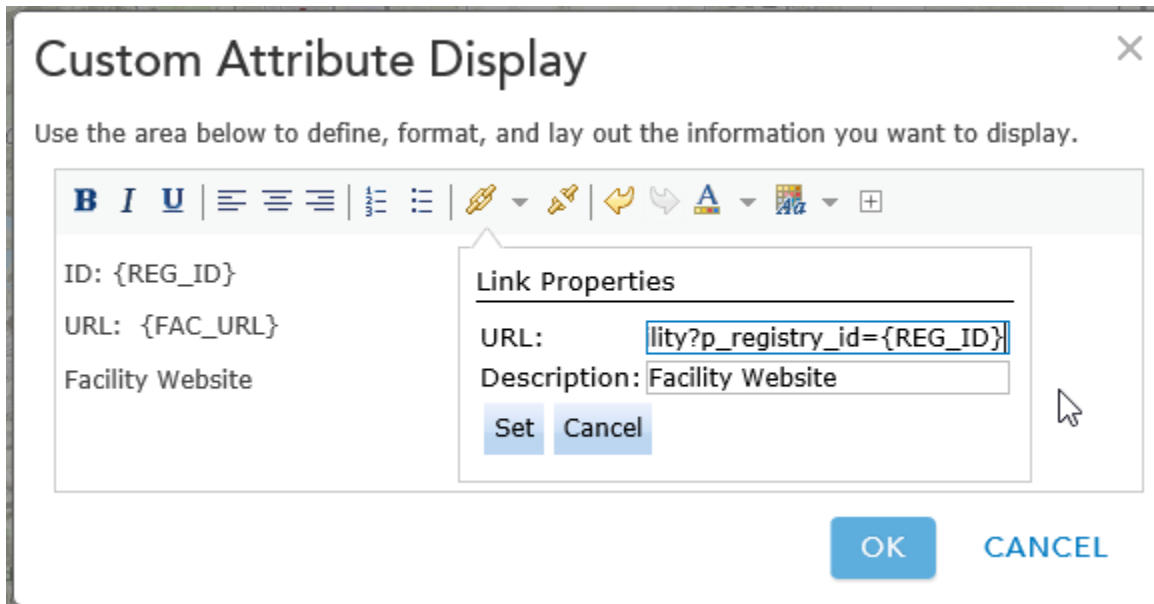
ID: {REG_ID}
URL: {FAC_URL}
Facility Website

For the link's URL, I took the URL from detail report that was launched from the original popup:

http://iaspub.epa.gov/enviro/fii_query_detail.disp_program_facility?p_registry_id=110000868348

and replaced the id value with a field parameter, using the same {REG_ID} as in the simple attribute in the first line of the custom popup:

http://iaspub.epa.gov/enviro/fii_query_detail.disp_program_facility?p_registry_id={REG_ID}



Custom Attribute Display [X]

Use the area below to define, format, and lay out the information you want to display.

B I U | ≡ ≡ ≡ | ≡ ≡ ≡ | ≡ ≡ ≡ | ≡ ≡ ≡ | Create Link | ↶ ↷ ↸

ID: {REG_ID}
URL: {FAC_URL}
Facility Website

Link Properties

URL:

Description:

Next I click Set > OK > Save Pop up

If I click on the Rocky Flats site again, I see the custom popup:



Things to notice:

1. The "Facility Website" is not displayed as a link, and clicking on it does nothing.
2. The URL is different than the URL that I copied from the address bar after following the link in the original stock popup.
3. The value of the REG_ID field matches the ID at the end of the FAC_URL field.

I copied the URL from the popup so that I could try using it in the custom popup:

http://oaspub.epa.gov/enviro/fac_gateway.main?p_regid=110000868348

and with the replacement parameter:

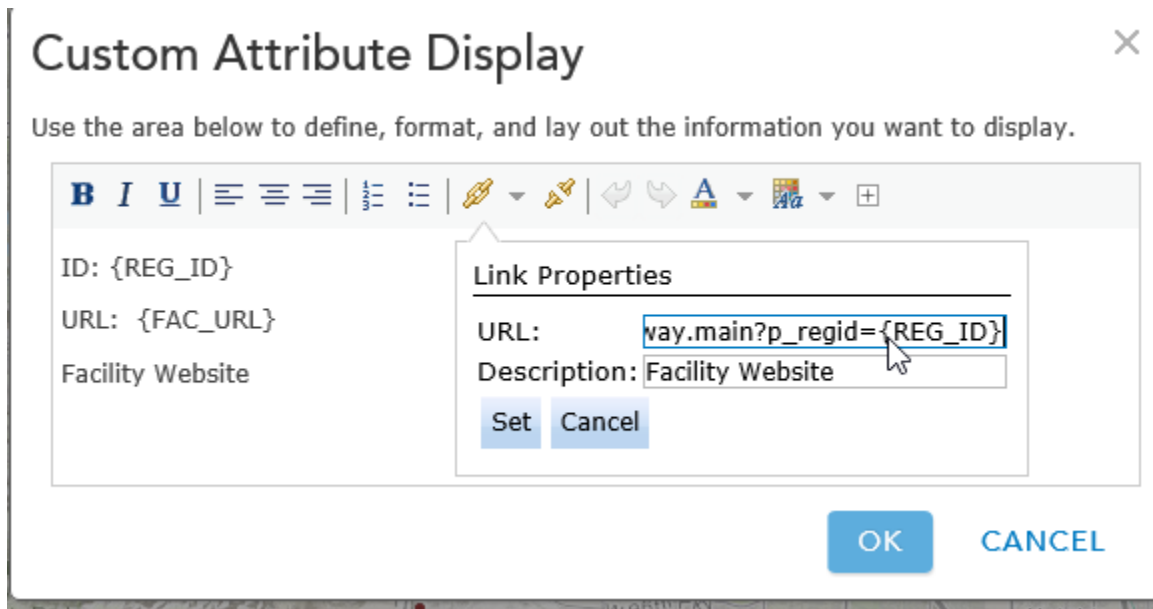
http://oaspub.epa.gov/enviro/fac_gateway.main?p_regid={REG_ID}

Going back to the Custom Attributes UI, the Facility Website is normal text – selecting the text and clicking on the Create Link shows an empty URL. I'm not sure if this is normal, or an indication that the link wasn't properly saved after it was originally defined...?

So with the "Facility Website" text selected, I clicked on Remove Link, reselected "Facility Website" again and click on Create Link. I pasted in

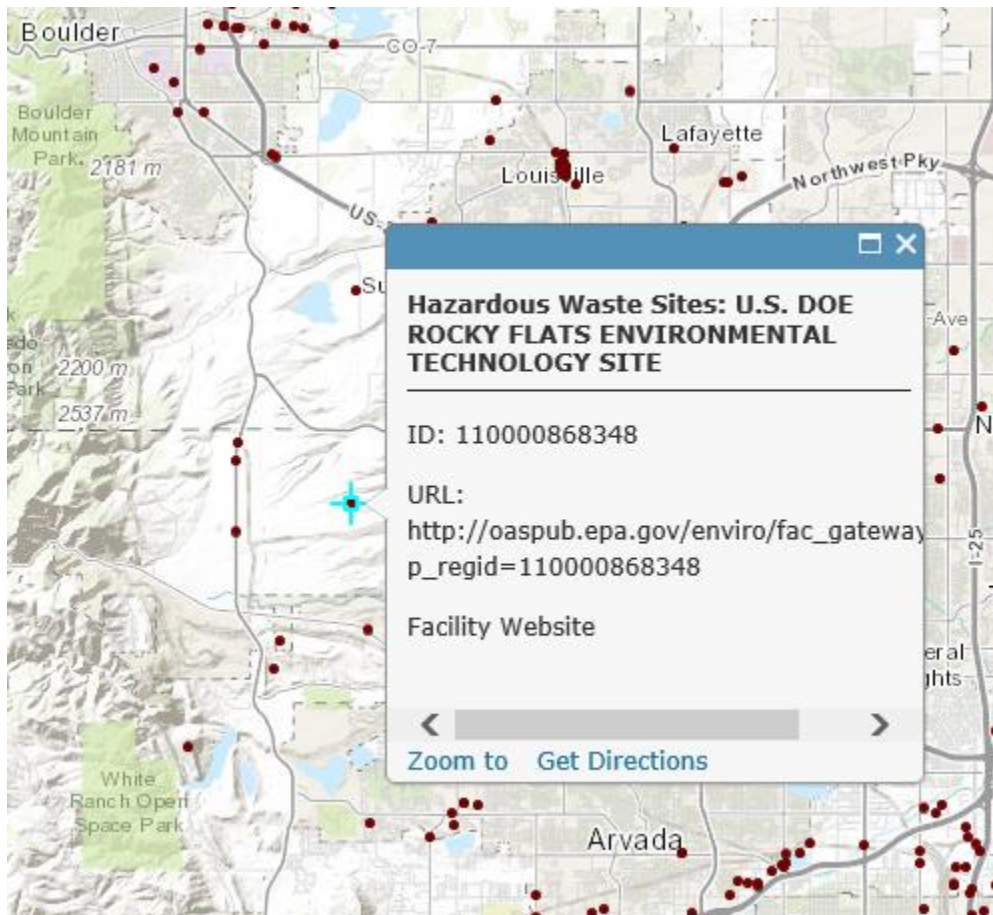
http://oaspub.epa.gov/enviro/fac_gateway.main?p_regid={REG_ID}

for the URL



Once again I clicked Set. At this point I noticed that "Facility Website" is still displayed as plain text – should it display as a link in this form? I proceeded on to click OK and Save Popup.

Clicking on Rocky Flats once again, the popup still has plain text for what should be the link:



I can't figure out what I'm doing wrong here. Any insights would be greatly appreciated!

Thanks,

Gary Sinner

gsinner@petroweb.com