

ArcGIS® Data Reviewer

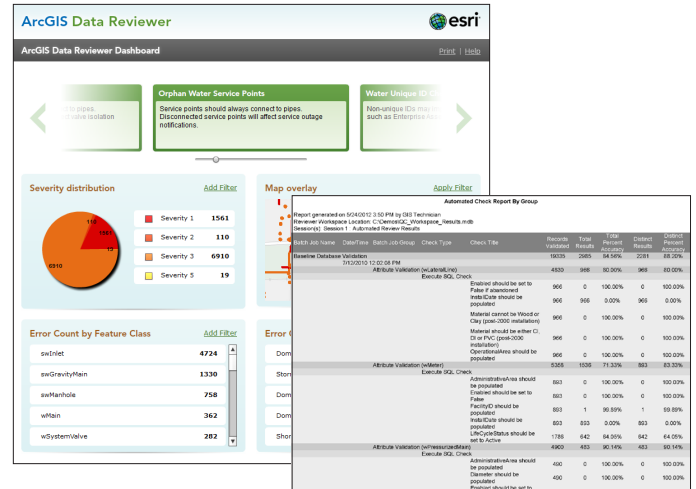
Automate, Simplify, and Improve Data Quality Control Management

Many organizations, especially those operating under constrained budgets, find it too costly and inefficient to implement a data quality control (QC) program based on manual processes. This poses a real challenge in everyday situations that require accurate data. Poor-quality data leads to costly mistakes in decision making that can be difficult to rectify.

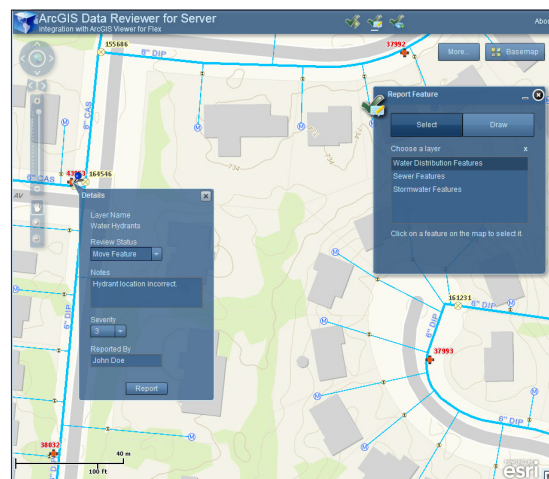
ArcGIS® Data Reviewer, Esri's data quality management extension to ArcGIS for Desktop and ArcGIS for Server, automates and facilitates the otherwise tedious and resource-intensive chore of data QC. ArcGIS Data Reviewer reduces the cost, time, and manpower required to complete QC tasks and can be used by individuals or teams or throughout the enterprise.

Key Benefits

- Automate and simplify your QC process using out-of-the-box, user-configurable checks.
- Implement consistent and repeatable organization-wide data review processes by sharing data quality business rules among teams or with contractors.
- Free up resources by scheduling automated data validations to run at specified dates and times, enabling staff to focus on higher-priority tasks.
- Streamline error correction workflows across your organization by managing QC results from a centralized location.
- Track and report the review, correction, and verification of your data by automatically capturing time and user information during the QC process.
- Leverage industry-specific QC templates published on the ArcGIS Resources website.
- Create your own data validation methods by building checks specific to your organization using custom code or geoprocessing models/scripts.



Determine the health of your data by identifying, categorizing, and quantifying errors easily and accurately.



Extend data quality feedback to a broad community of subject matter experts, stakeholders, and other interested parties through web services.



Key Features

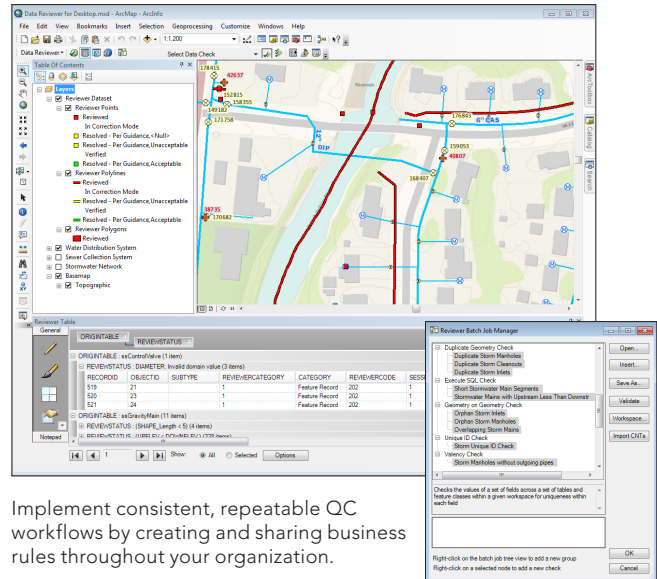
ArcGIS Data Reviewer saves time and organizational resources by allowing you to do the following:

- Implement data quality business rules across any industry using configurable checks that can be consistently and repeatedly run against your data
- Improve efficiency and oversight by scheduling and automatically executing data validation on a daily, weekly, or monthly basis on your desktop or via the web
- Identify error trends in your data by using tabular reports and web-based analytical dashboards
- Extend visual data review and feedback capabilities across your organization by deploying easy-to-use tools to identify missing features directly in a map or by simply indicating their location
- Minimize conflicts and potential data reworking by identifying and reviewing feature modifications between parent or sibling geodatabase versions
- Expedite data validation by focusing your review on features that require evaluation—the entire database, a selected set of features, a spatial area of interest, or modified features only
- Manage the visual review of large datasets by generating a statistical sample of features and records for review

Training and Implementation Packages

The following options are available to help you begin using ArcGIS Data Reviewer:

- Standard classroom training
- Custom workshops
- On-site and remote implementation and configuration support



Implement consistent, repeatable QC workflows by creating and sharing business rules throughout your organization.



Understanding our world.

Request a free trial at esri.com/datareviewer or e-mail datareviewer@esri.com for more information.