



# ArcGIS Online: An Introduction to the Living Atlas

Deane Kensok, Christophe Charpentier

Technical Workshop

# Session Agenda

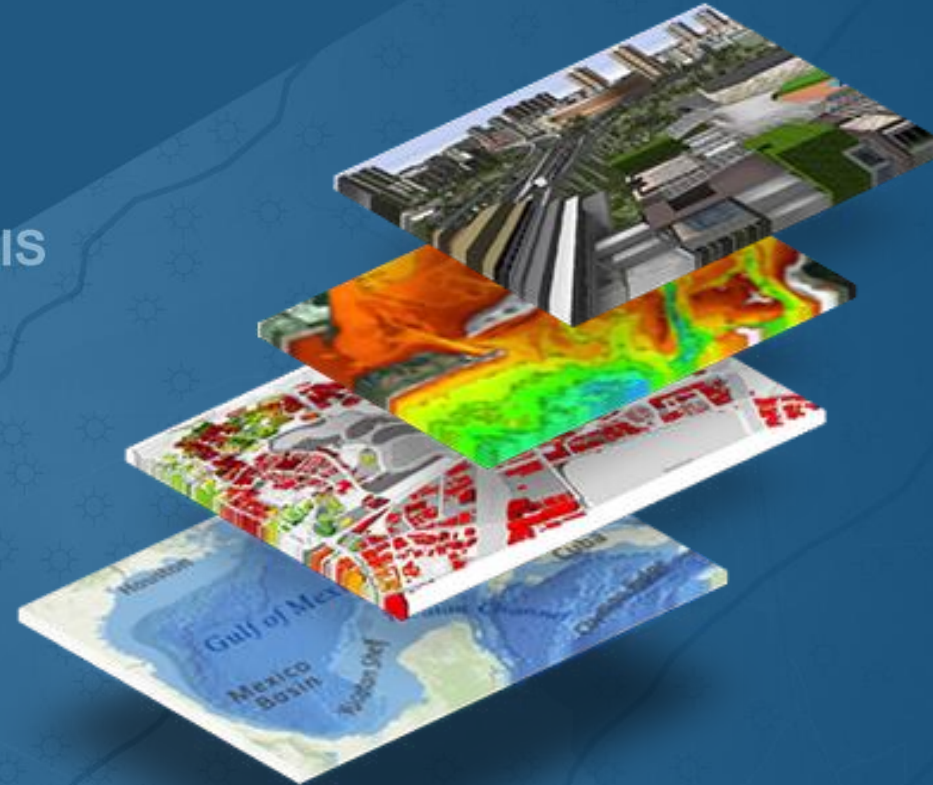
- **Overview of the Living Atlas**
  - **Demo: How to Access the Living Atlas in ArcGIS**
- **Esri Content Portfolio**
  - **Overview and Update on What's New in ArcGIS Online**
  - **Demos: Recent Enhancements**
  - **Living Atlas at the UC**
- **Questions & Answers**

# Content is Integral to the Platform

The Heartbeat of the System ...



Web GIS



... to Map, Understand and Analyze the World  
... in the Cloud and On-premises

# ArcGIS includes a Living Atlas of the World

Maps and Layers from Esri and Thousands of Contributors



Curated Content for Many Topics

- Basemaps
- Boundaries
- Elevation
- Hydro
- Habitats
- Hazards
- Oceans
- Urban Systems
- Observations
- Demographics
- Historical
- Imagery
- Transportation
- Soils
- Land Cover
- Landscape
- Weather

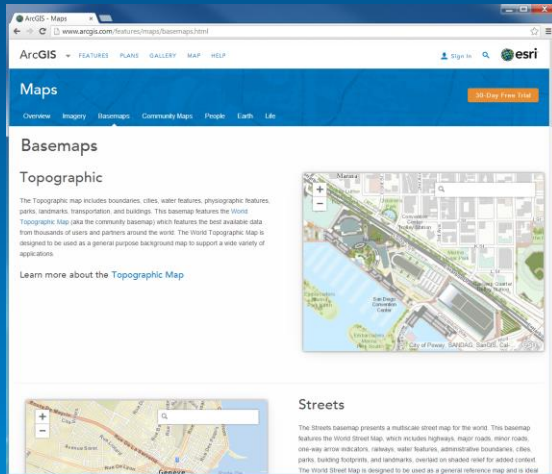


Collection is Growing and Changing on a Daily Basis

... Providing a Foundation for Your Work

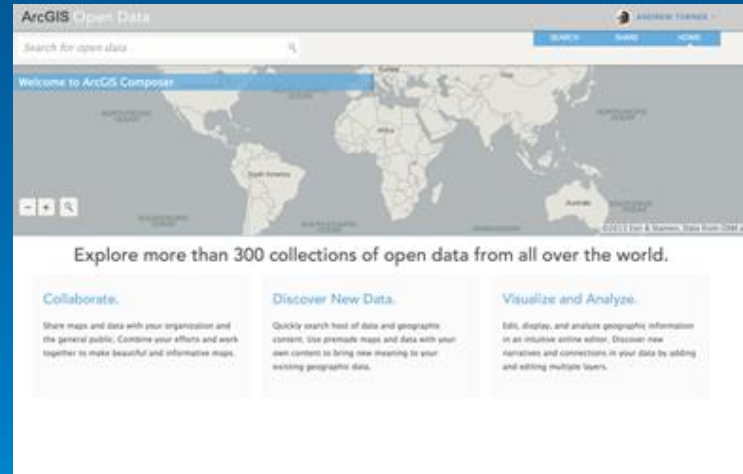
# Content is published by Esri, Users and Partners

## Esri

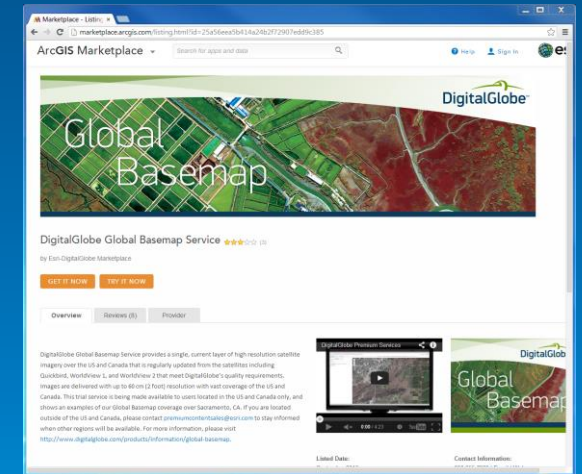


Foundational Map Layers

## Community



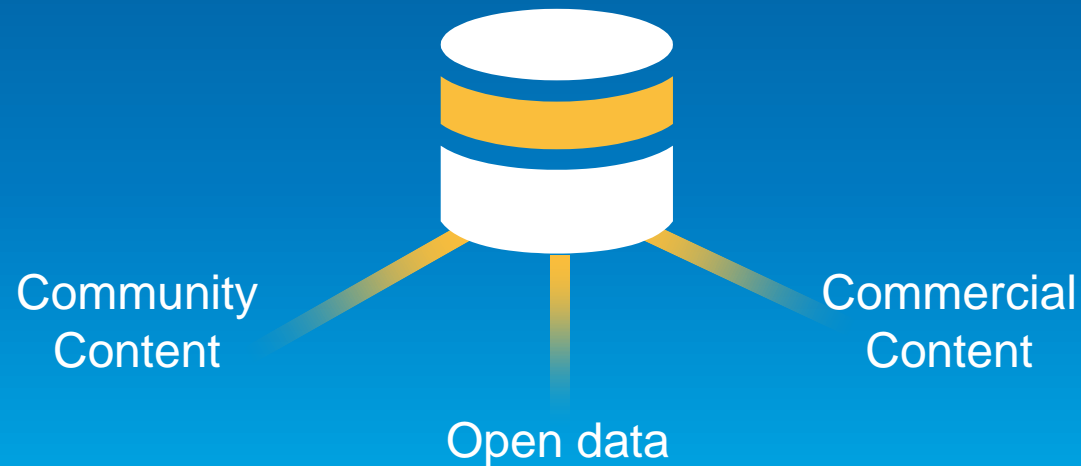
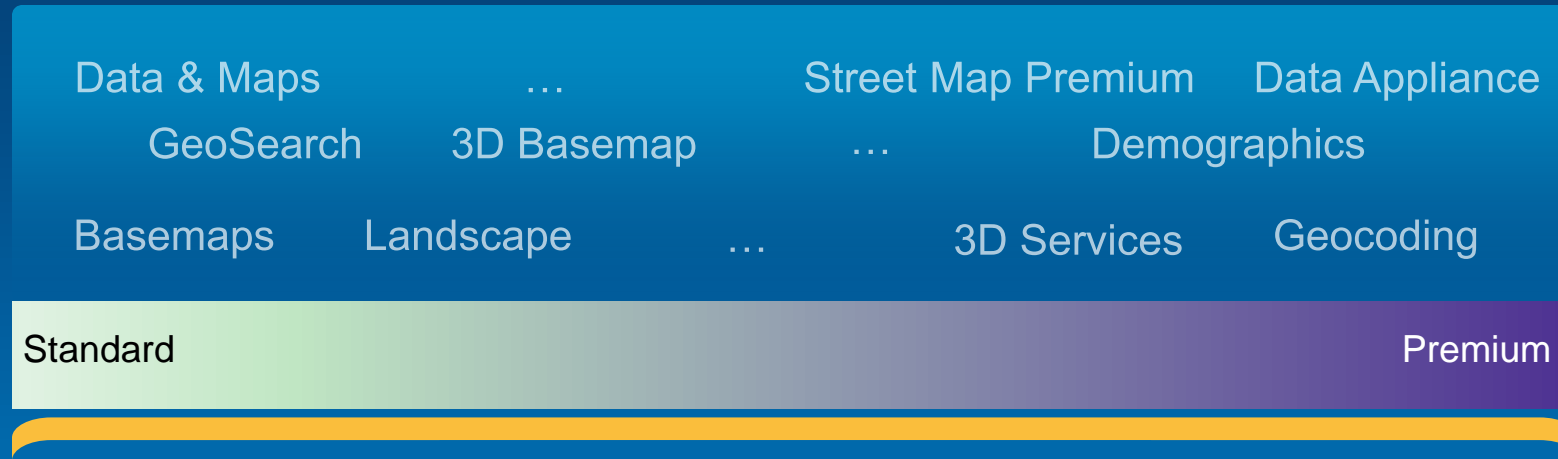
## Partners



Local / Regional Industry Specific

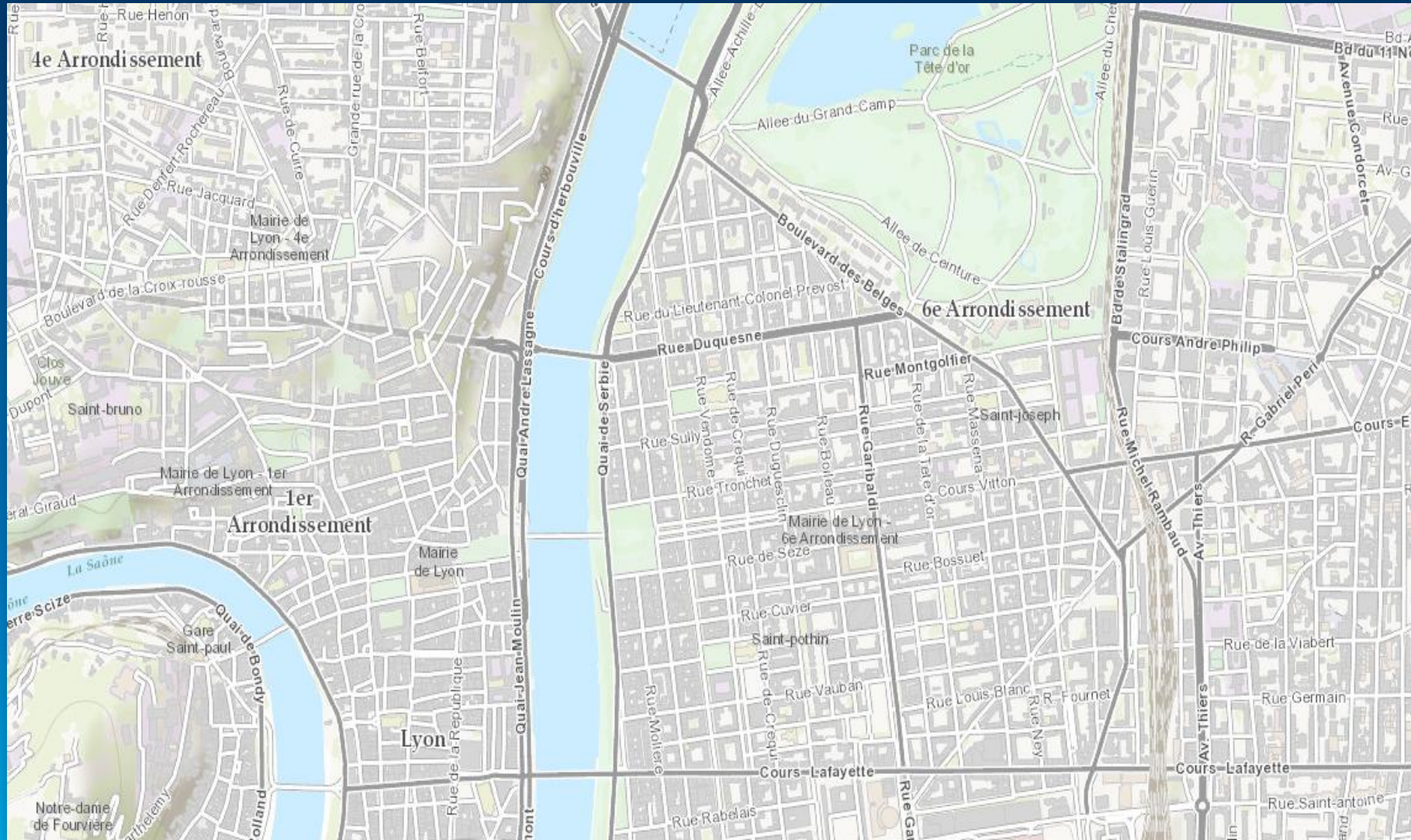
# Esri Builds Foundational Map Layers

Ready to use Content and Information Products ...



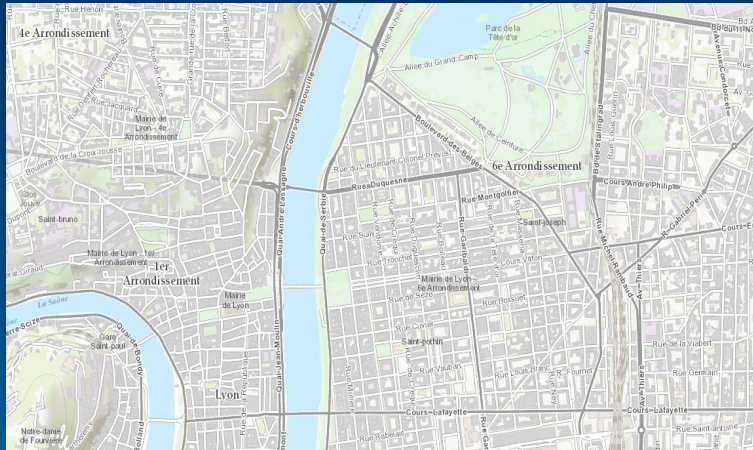
... Built by assembling best available Content

# Community Maps



Basemaps

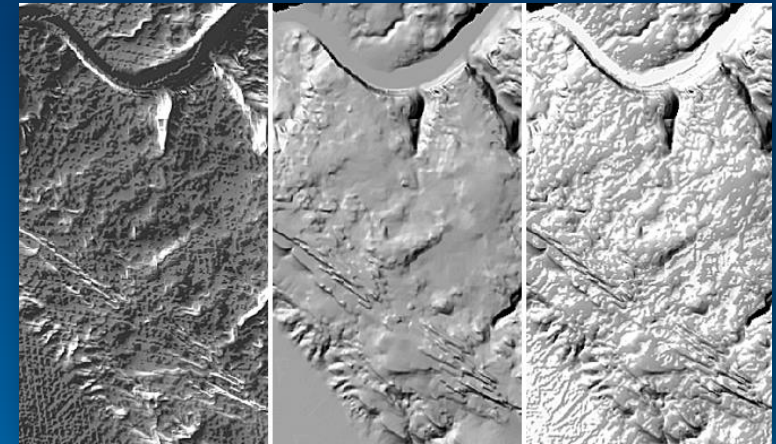
# Community *Content* goes beyond maps



Basemaps



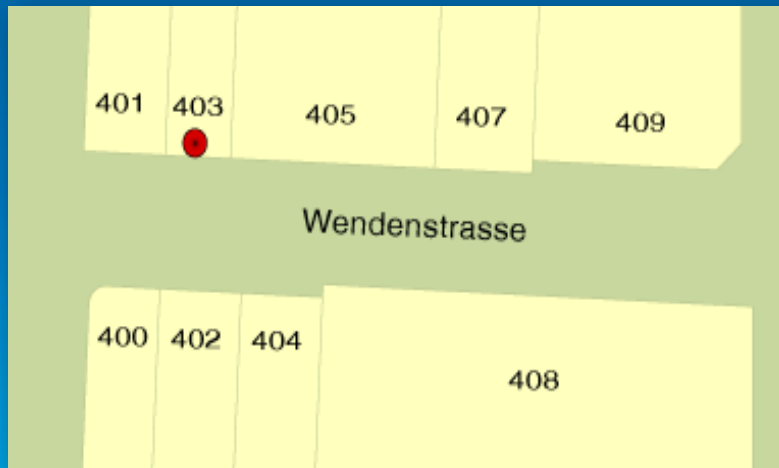
3D



Elevation



Imagery



Geocoding



Landscape



# Data

### Show Me

- All
- Applications
- Data**
- New
- By Esri
- Popular
- Free

### Categories

- All**
- Image
- Feature
- Tiled

### Industries

- All**
- Aid and Development
- Business
- Defense
- Intelligence
- Education
- Government

All Platforms

Free & Paid

All Languages

Sort By: Title



**Canada Severe Weather**  
 AccuWeather Enterprise Solutions  
 ★★☆☆☆☆ (2)



**DigitalGlobe FirstLook Service**  
 Esri-DigitalGlobe Marketplace  
 ☆☆☆☆☆ (0)



**DigitalGlobe Global Basemap Service**  
 Esri-DigitalGlobe Marketplace  
 ★★★☆☆ (3)



**DigitalGlobe Multispectral Service**  
 Esri-DigitalGlobe Marketplace



**RapidEye Living Image BaseMap**  
 Esri-BlackBridge Marketplace



**RapidEye Living Image Multispectral**  
 Esri-BlackBridge Marketplace

*Applicability to users*

*Generic to Focused*

DigitalGlobe

Airbus

RapidEye

AccuWeather

HERE  
StreetViews

Mapping  
Agencies

Pictometry

Quantum  
Special

Seneca  
Resources

Cyclomedia

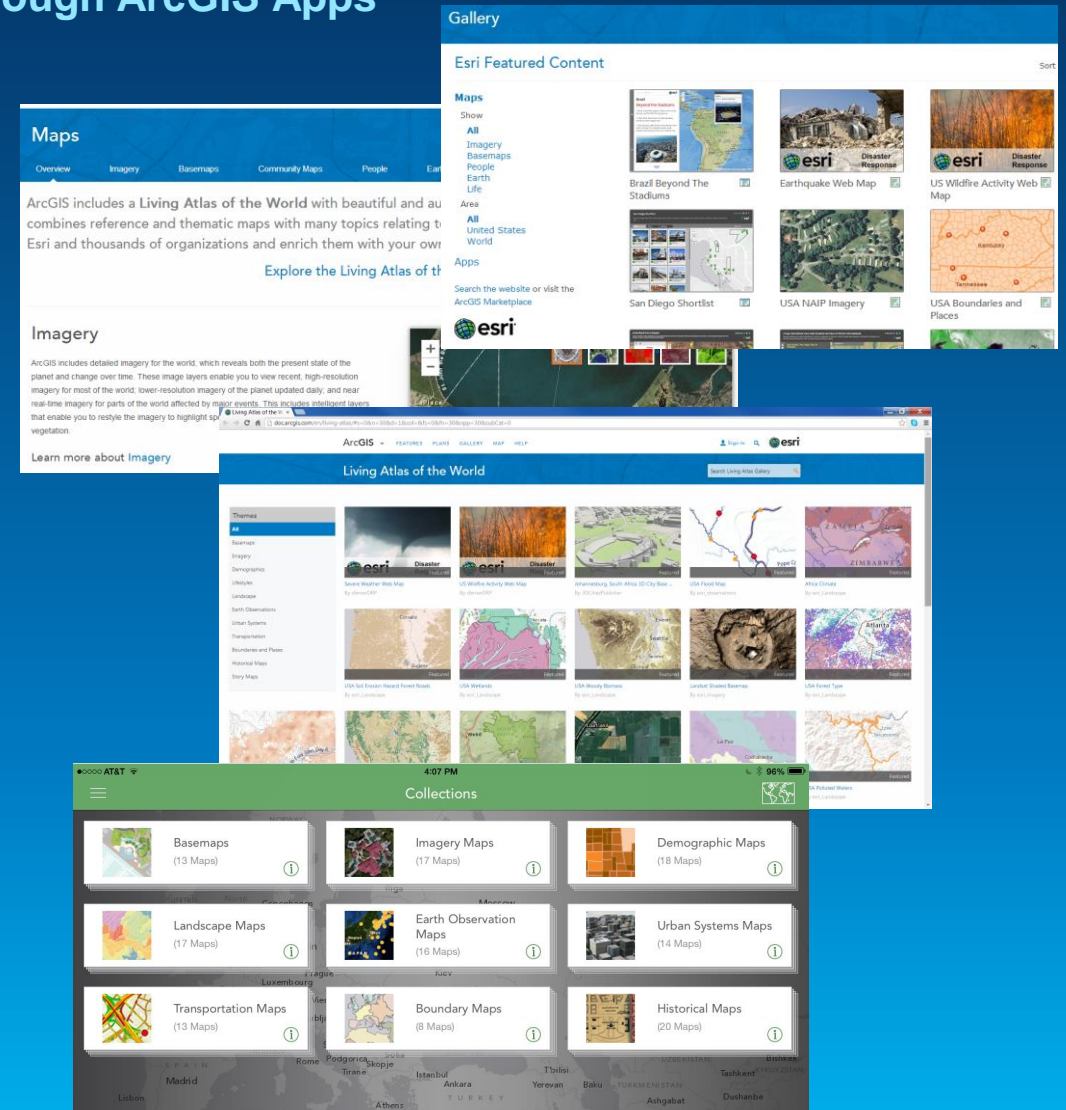
ExactEarth

FireWhat

# Accessing the Living Atlas through ArcGIS

Multiple ways to Experience the Living Atlas of the World through ArcGIS Apps

- **ArcGIS Online (ArcGIS.com)**
  - Ready-to-Use Maps feature pages
  - Gallery: Esri Featured Content
  - Add Data: Browse Esri Map Layers
- **Living Atlas of the World Web App (New!)**
  - Browse and preview maps, layers, and tools
- **Explorer for ArcGIS App (New!)**
  - Native App for iOS and Mac platforms
  - Free to use with your Org Subscription



# Living Atlas Curators

## Urban Systems

- Brian S
- Jim H

## Landscape

- Peter A
- Sean B

## Imagery

- Daniel S
- Vinay W

## Earth Observation

- Daniel S

## Demographics

- Cathy S
- Nuno R

## Basemaps

- Andrew G

## Transportation

- Wolfgang H.
- Sean B.

## Story Maps

- Jon B

## New Theme

- You ! The domain expert

## Other Theme

- Domain Expert seating next to you

Demo

# Accessing the Living Atlas through ArcGIS

Recent Enhancements

## Living Atlas of the World



Severe Weather Web Map  
By cfernerDRP



US Wildfire Activity Web Map  
By cfernerDRP



USA Soil Erosion Hazard Forest Roads  
By esri\_Landscape

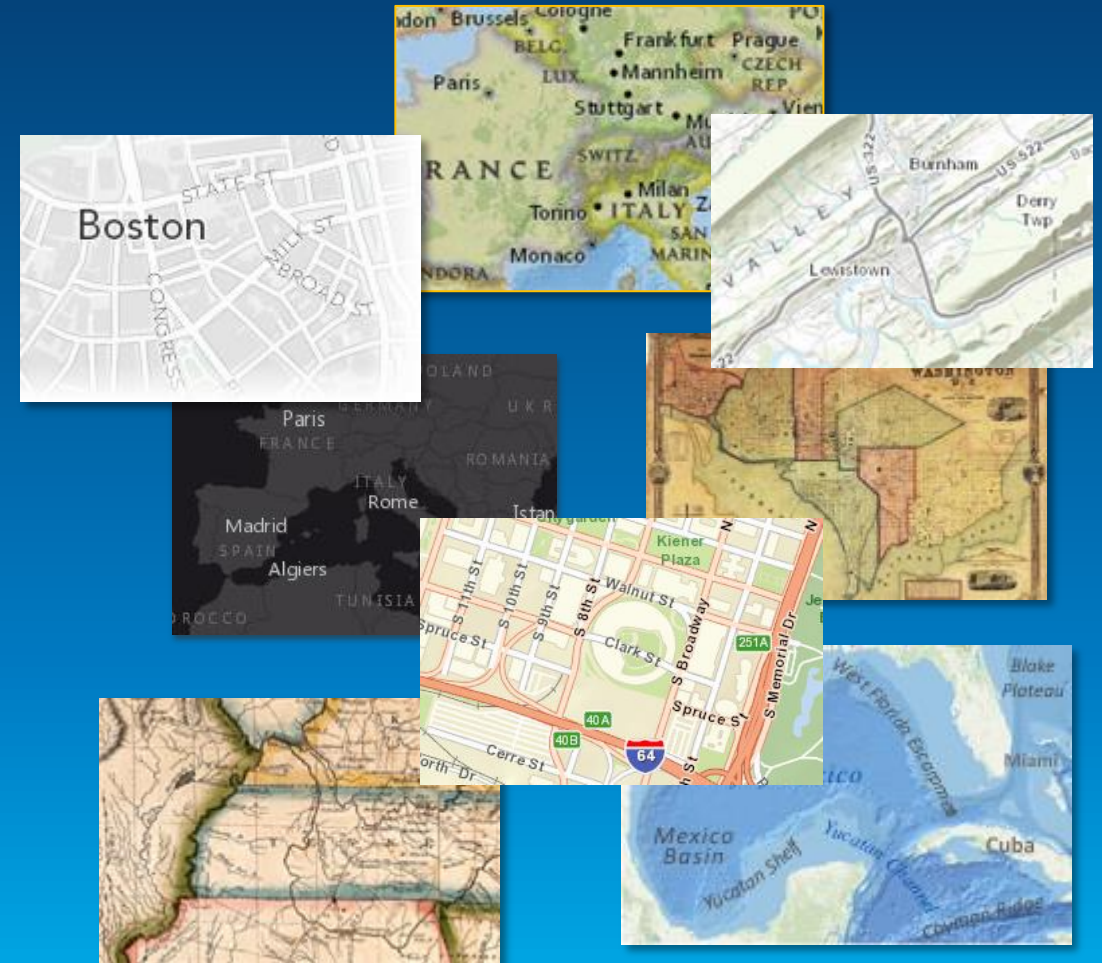
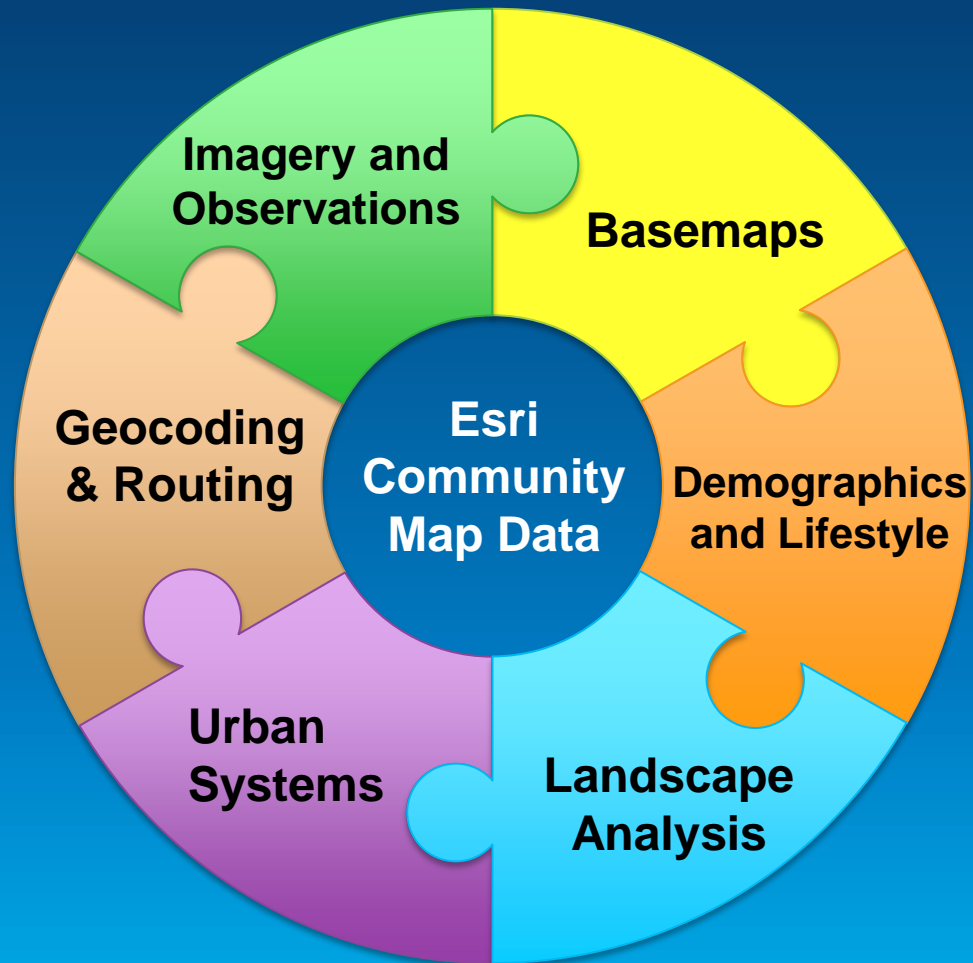


USA Wetlands  
By esri\_Landscape





# Esri Content Portfolio for Basemaps



# Basemaps

Suite of basemaps to support your web maps and applications

- **Variety of Basemaps for Different Maps and Apps**
  - From neutral background maps to rich foreground maps



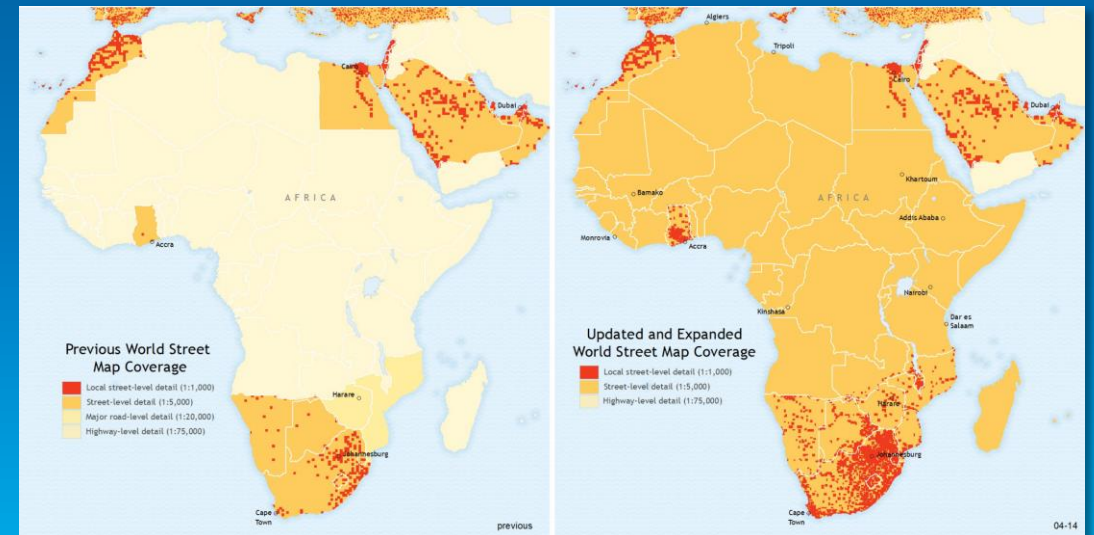
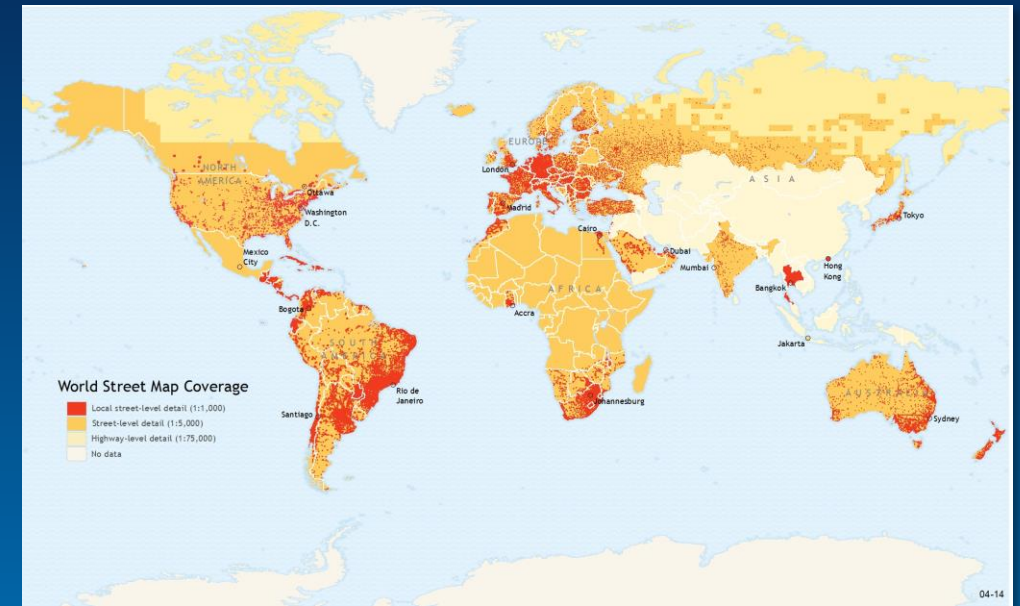
- **Reference and Foundation Maps for the Living Atlas**



# Basemaps Going Global

Adding Detail at Large Scales to Complete Global Coverage

- **Global Basemaps**
  - Updating with best available data
  - Expansion of coverage at large scales
    - 1:4k nationwide and 1:1k in urban areas
- **Africa Coverage Expanded Recently!**
  - Featuring OpenStreetMap (OSM) Data
- **North America Updated in June**
- **Europe Updates Planned in Q3**
- **Rest of World to be Added in Q4**
  - Central Asia, Southeast Asia



# Recent Enhancements for Basemap Tiles

- **Implemented Tile Re-sampling in Web Apps (JavaScript API)**
  - Greatly reduces “No Data Available” tiles on web
  - Displays last available cache at larger scales

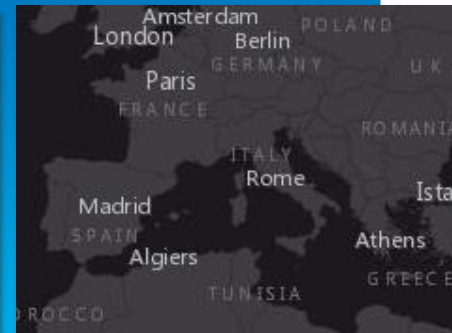
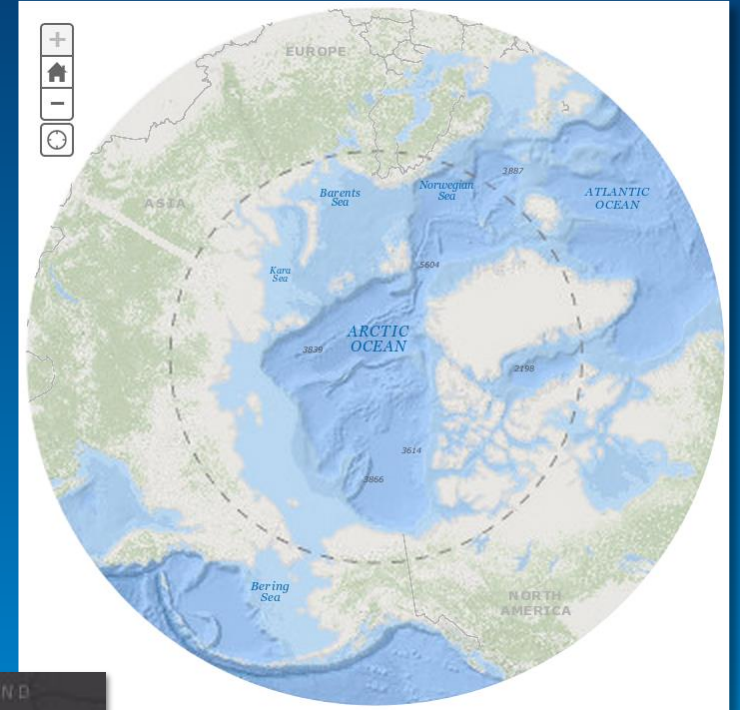


- **Enabled Export of Basemap Tiles**
  - Supports offline workflows for mobile apps
  - Available at no cost with Subscription

# Introducing New Basemaps

Expanding the suite of basemaps to support different maps and use cases

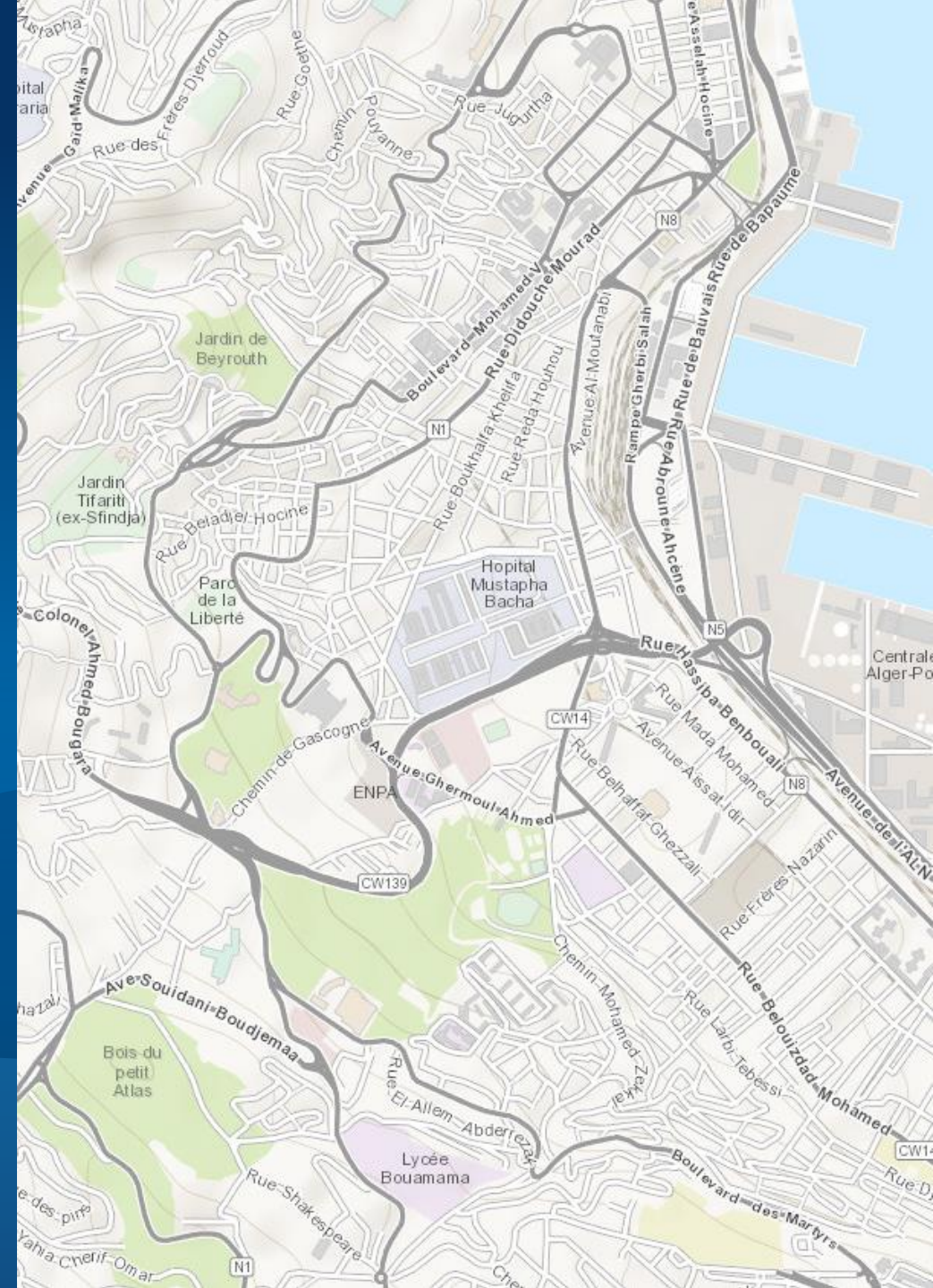
- **New Basemaps in Polar Projection (Beta)**
  - **Arctic Oceans:** ocean basemap for use in polar region
  - **Arctic Imagery:** imagery basemap in same projection
    - Uses standard projection accepted by NOAA, NGA, Oil & Gas
- **Introduce New and Enhanced Map Designs**
  - **Oceans Basemap:** updated with separate overlay layer
  - **Dark Gray Canvas (Beta):** new background map
  - **Imagery Hybrid (Beta):** enhanced overlay layer design



Demo

# Basemaps

Recent Enhancements



# Expanded Collection of Historical Maps

Rich Collection of Beautiful Map Archives published with ArcGIS



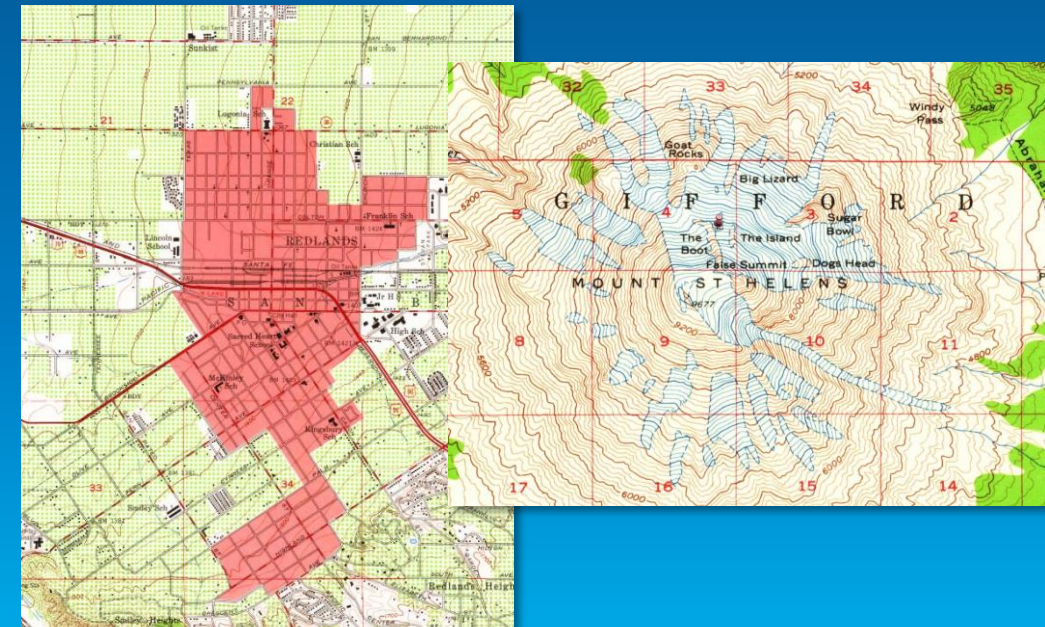
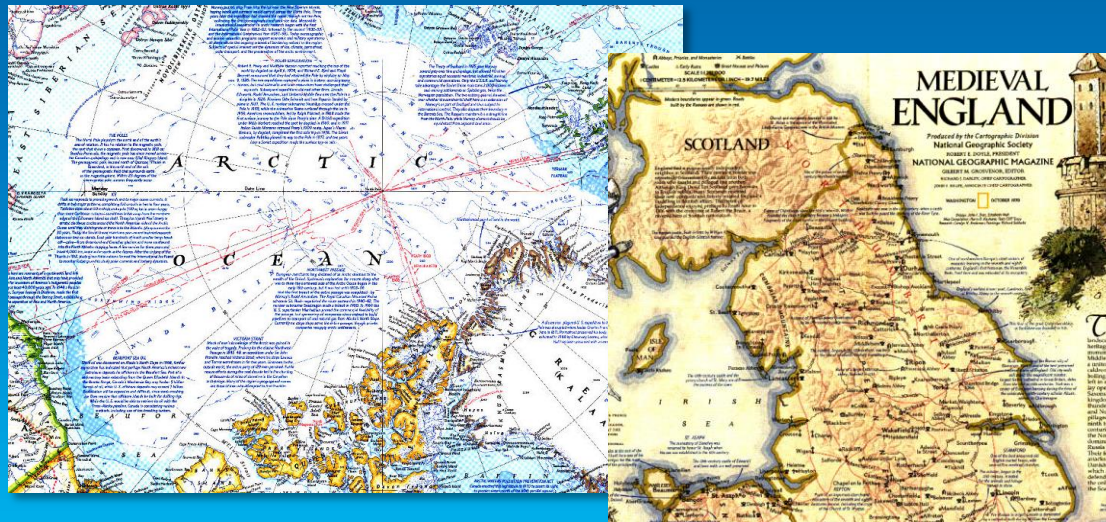
- David Rumsey Historical Map Collection



- USGS Historical Topographic Maps



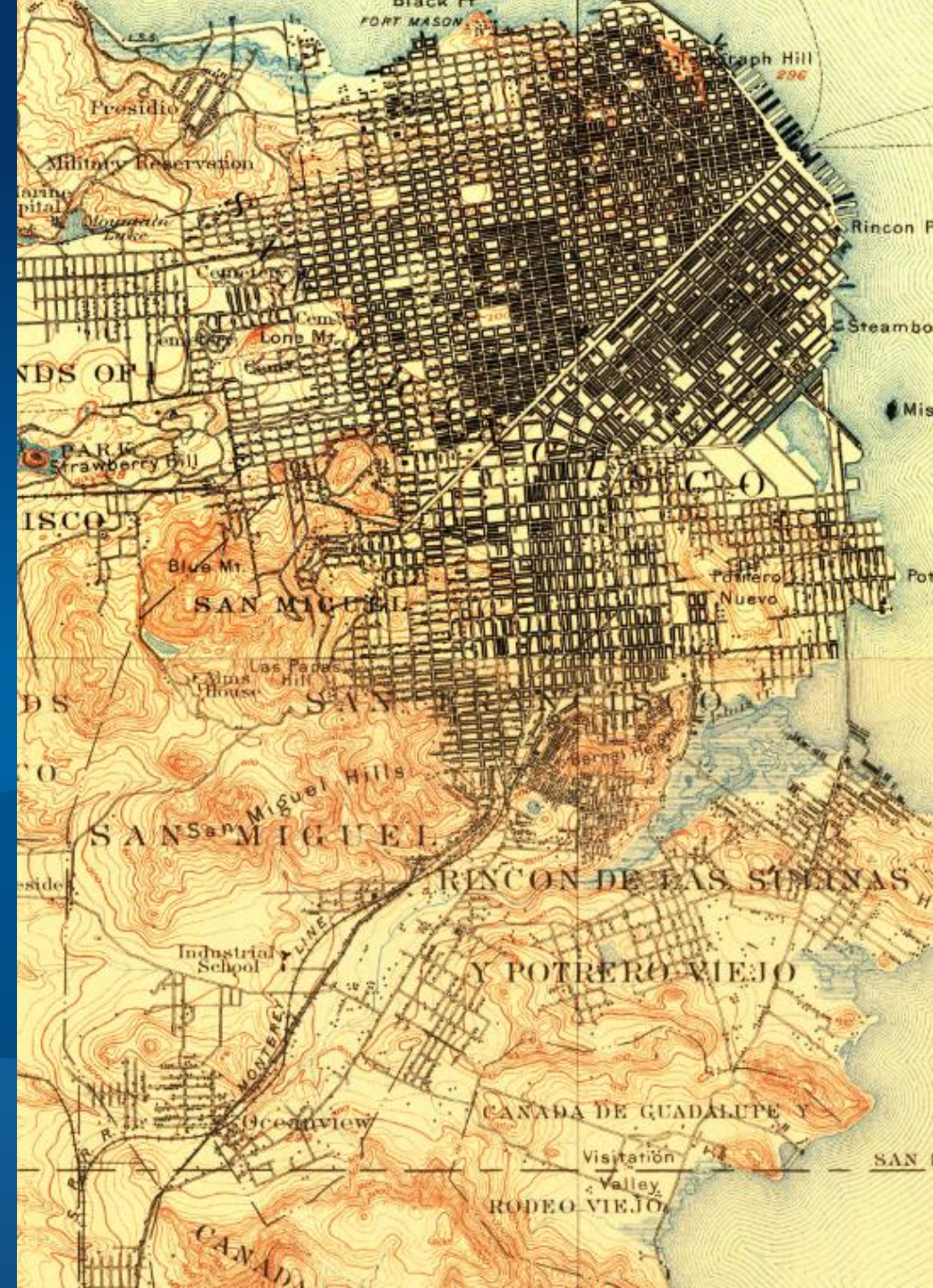
- National Geographic Historical Map Archive



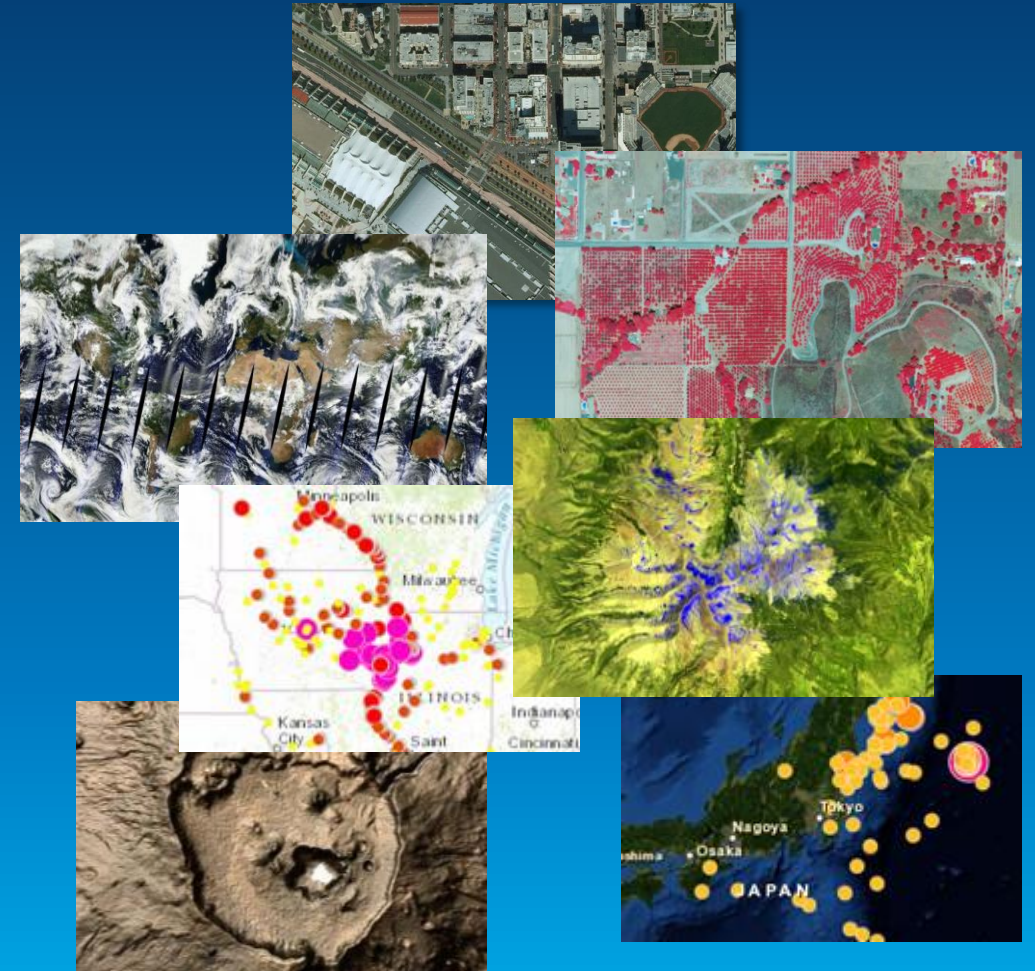
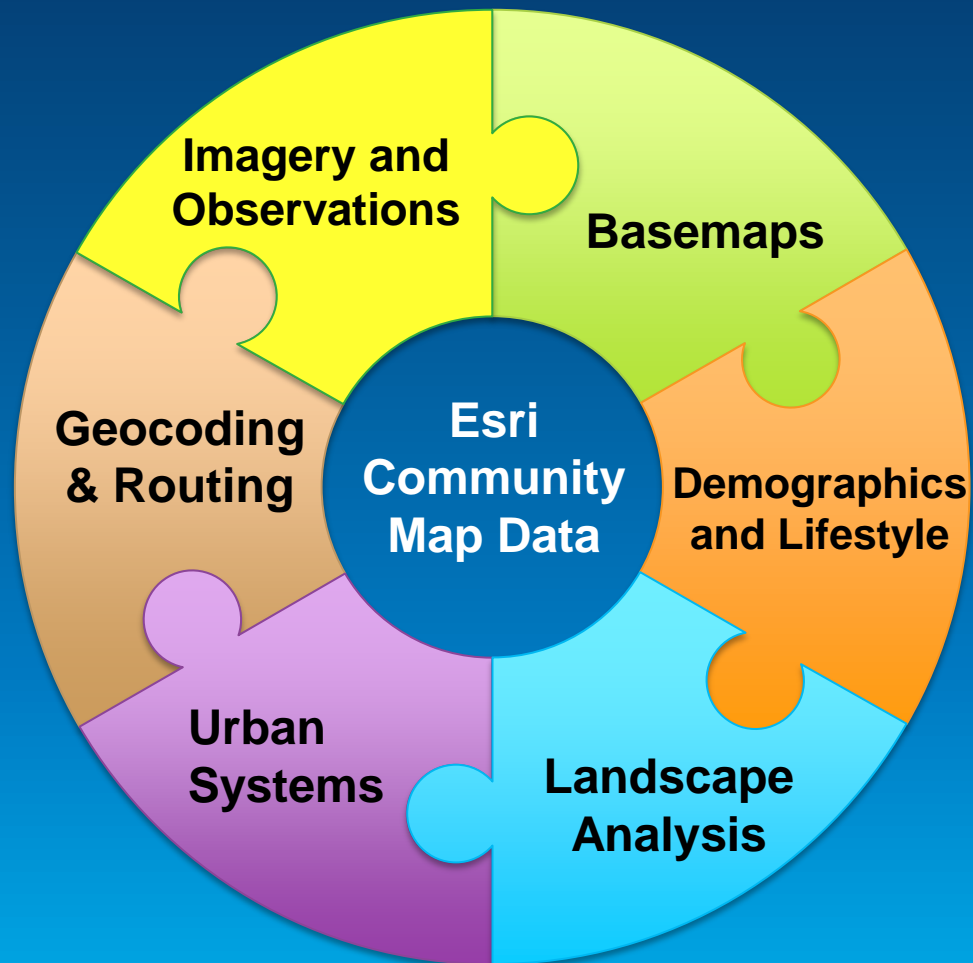
Demo

# Historical Maps

New Additions to the Collection



# Esri Content Portfolio for Imagery

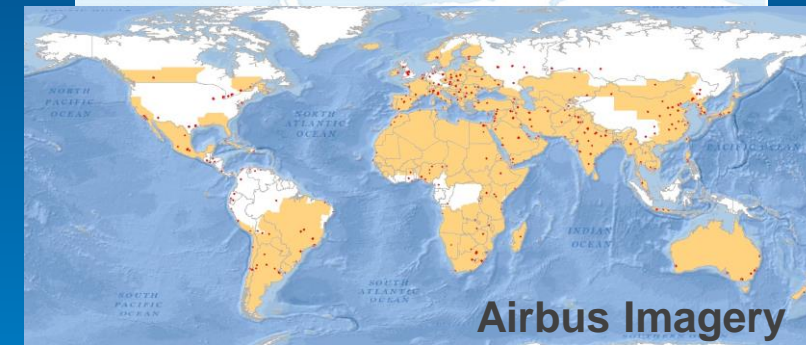
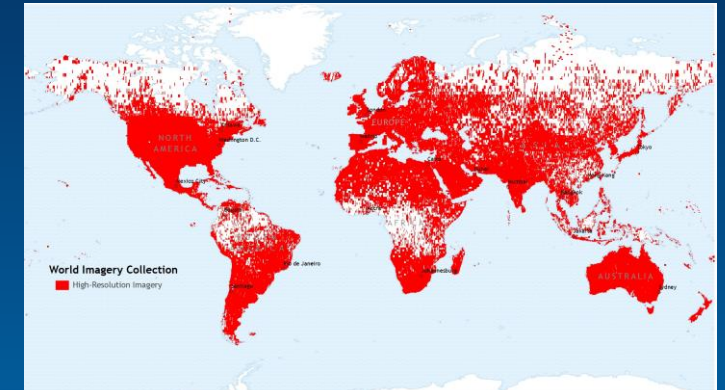


# World Imagery

## Current Status and Plans for 2014

- **Completed Deployment of DigitalGlobe Imagery**
  - Updates also include user community contributed content
- **Updated Small-to-Medium Scale Imagery**
  - Earthstar TerraColor (15m) and Airbus SPOT (2.5m) imagery
  - Update down to 1:72k level is available now!
  - Selected areas in Europe and Canada down to 1:9k
- **Continue Updating & Expanding World Imagery Coverage (Q3-Q4)**
  - Expand and update large-scales with high resolution **Airbus imagery** (2.5m and 0.5m)
  - Publish new imagery provided by user community (e.g. update USA with latest NAIP)

### Current Hi-Res Coverage



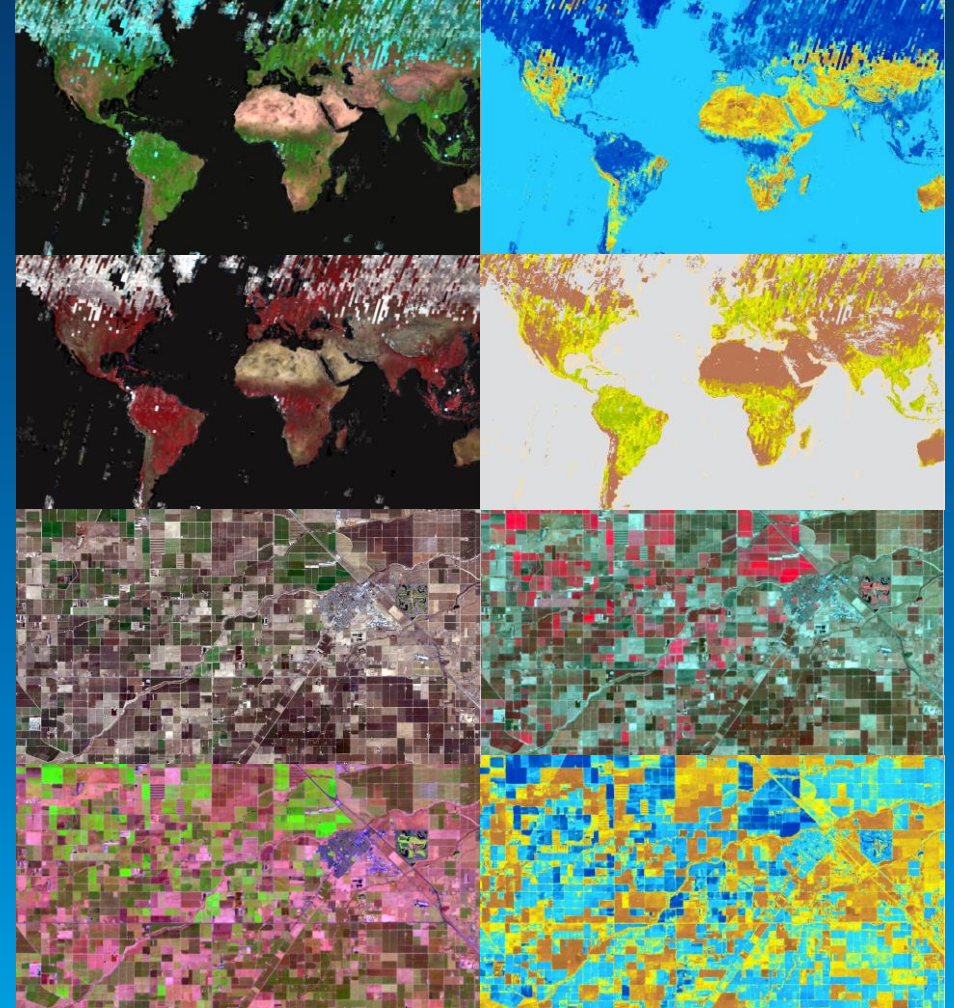




# Landsat 8 Imagery

Global 15m imagery for regional land analysis

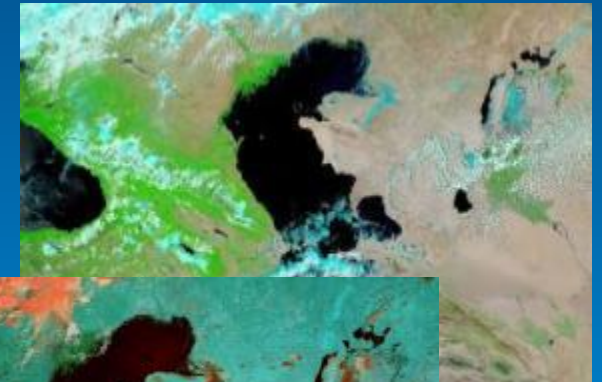
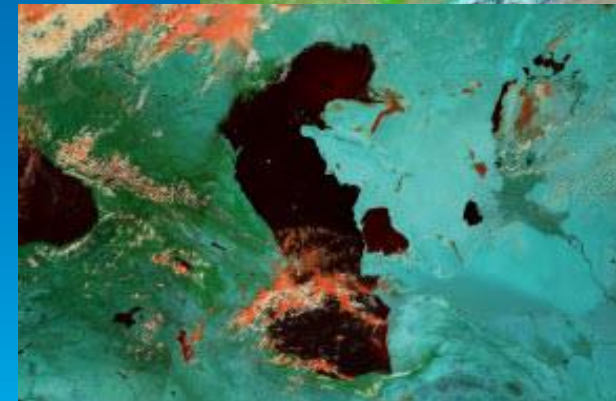
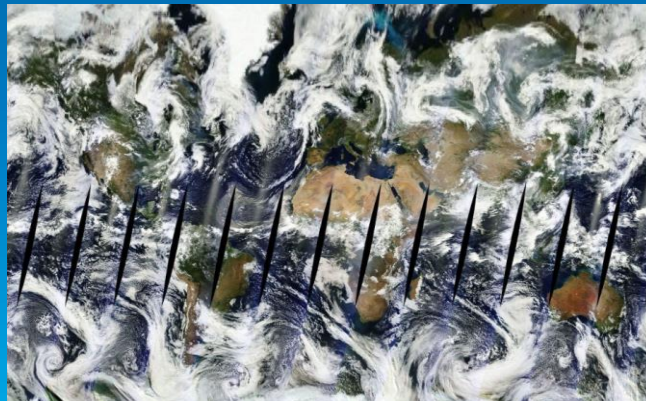
- **Global: Multi-temporal, Multi-spectral**
- **New scene every 16day (cloud permitting)**
- **5 Latest best scenes for whole world**
- **Update daily with approx. 400 scenes**
- **Available with ArcGIS Online Subscription**
  
- **Landsat GLS Imagery also Available**
  - **Multi-epochs available from 1975 to 2010**



# MODIS Imagery

Global 250m imagery layers to support visualization and analysis

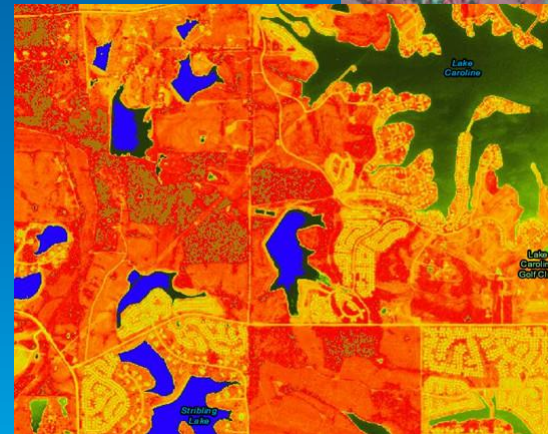
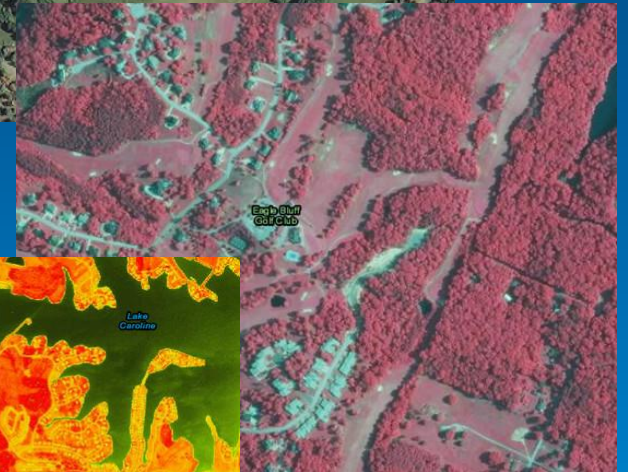
- **Image Layers referencing NASA Global Image Browse Services**
  - GIBS are a set of standard services to deliver global satellite imagery
  - Esri will serve the highest resolution and most used info products
  - Global imagery updated daily
    - Near real time, less than 3 hours latency after capture
  - Geographic and Polar Stereographic data



# NAIP Imagery

Nationwide 1m resolution imagery for the Continental United States

- **Nationwide Image Service**
- **Imagery available for the Past 3 Years**
  - Currently NAIP 2010-2012
  - Will be updated annually (NAIP 2013 in Q3)
- **Multi-band (4-band) Imagery**
  - Supports Natural Color, False Color, NDVI
- **Available with ArcGIS Online Subscription**
  - Currently available in Beta release

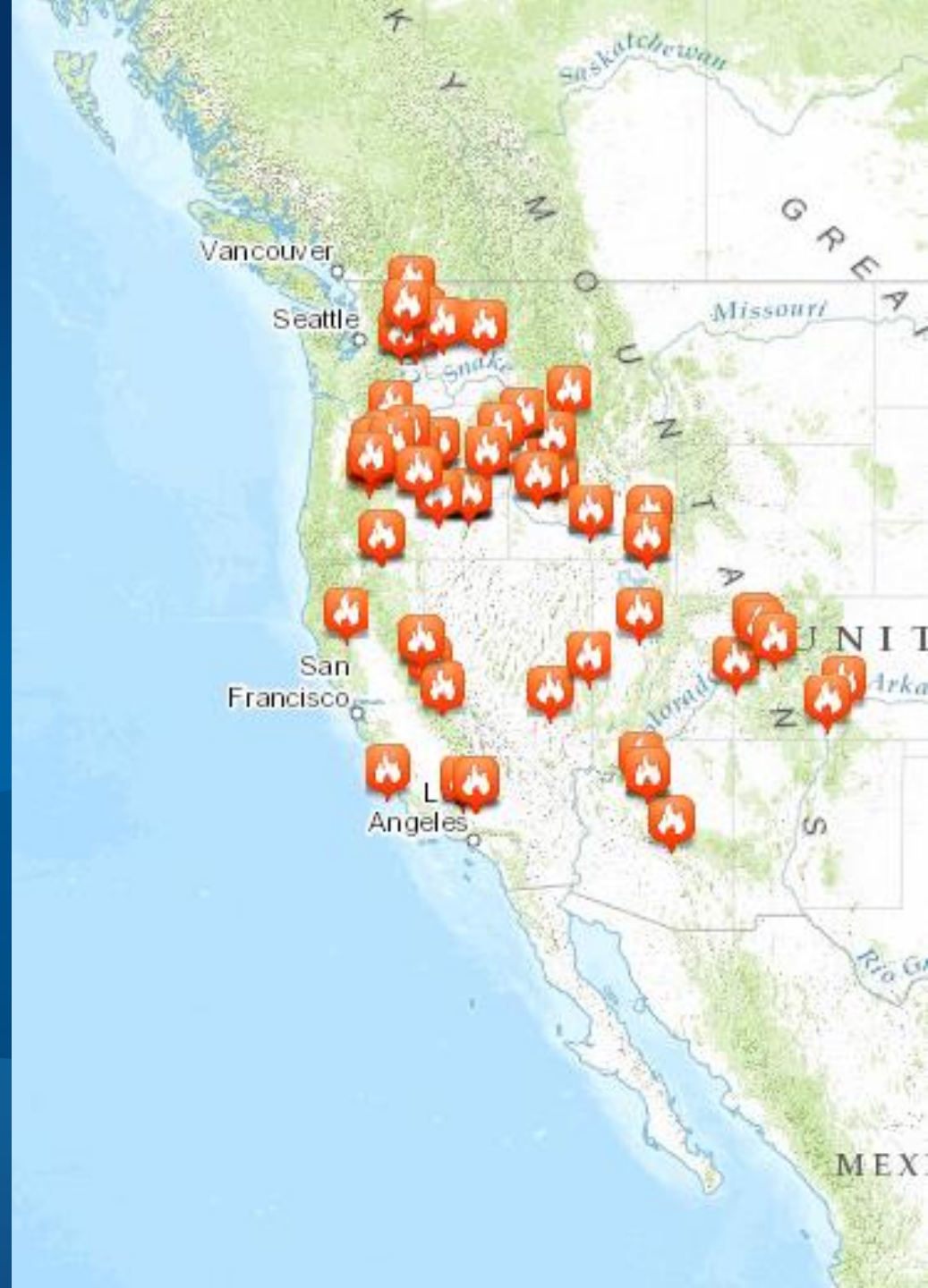




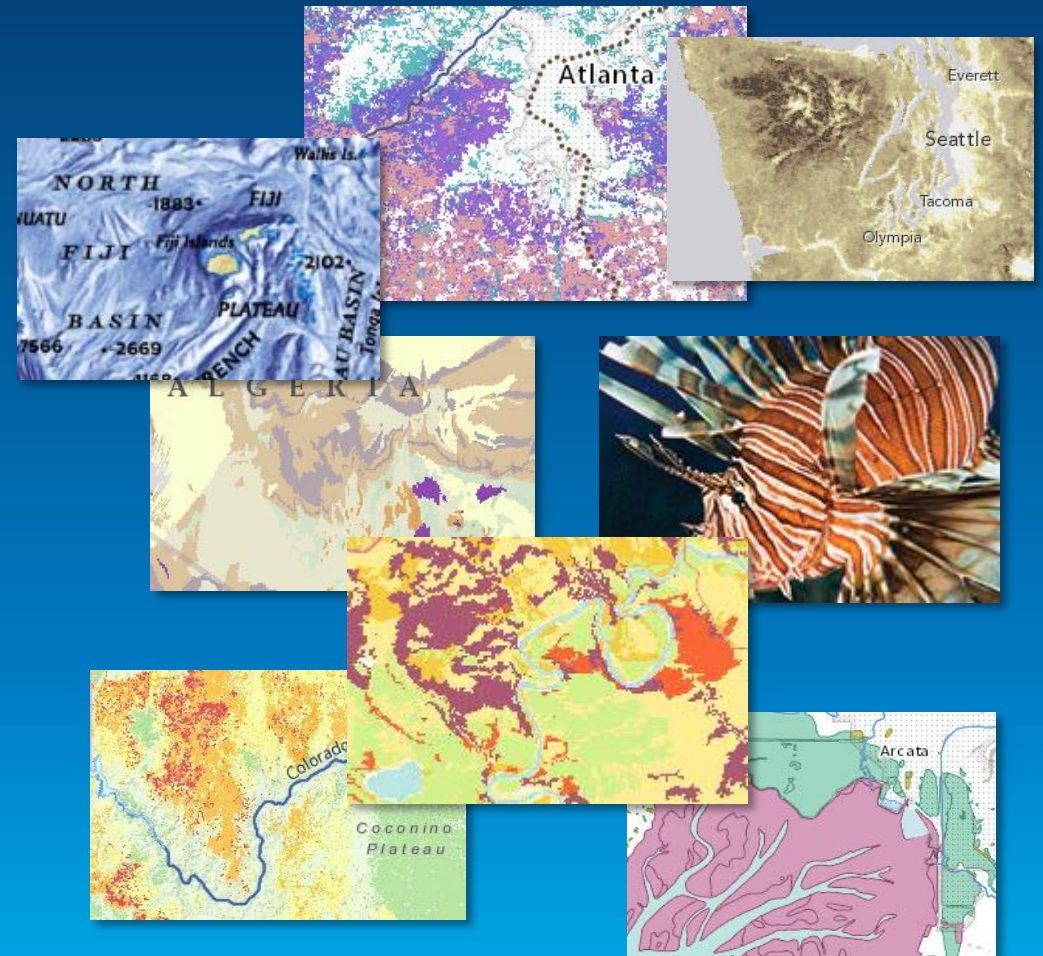
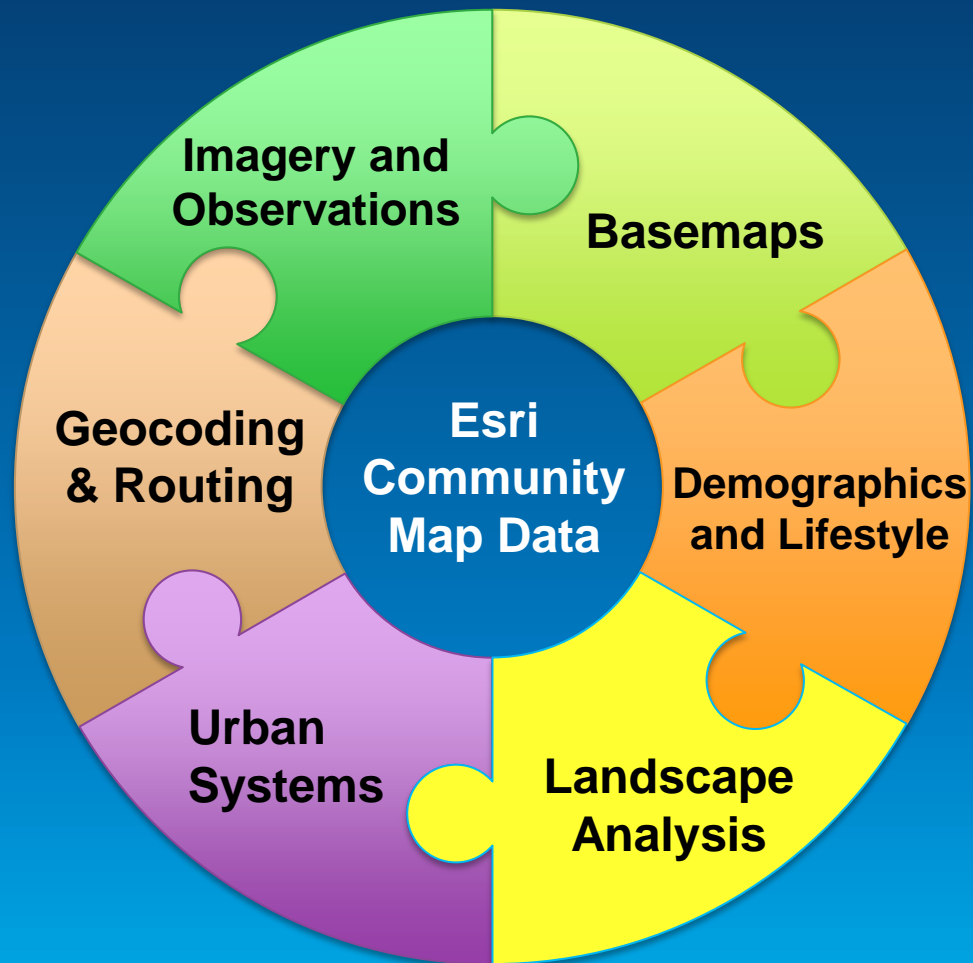
Demo

# Earth Observations

New Live Feeds



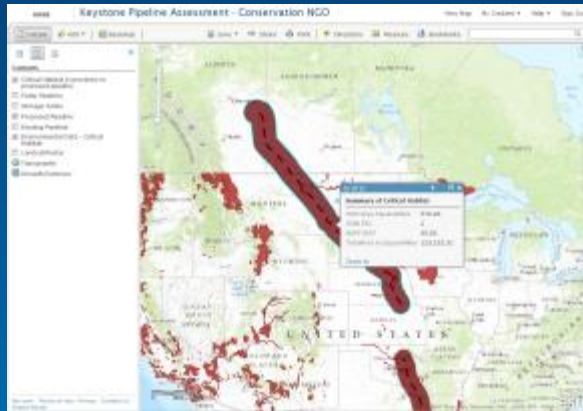
# Esri Content Portfolio for Landscape Analysis



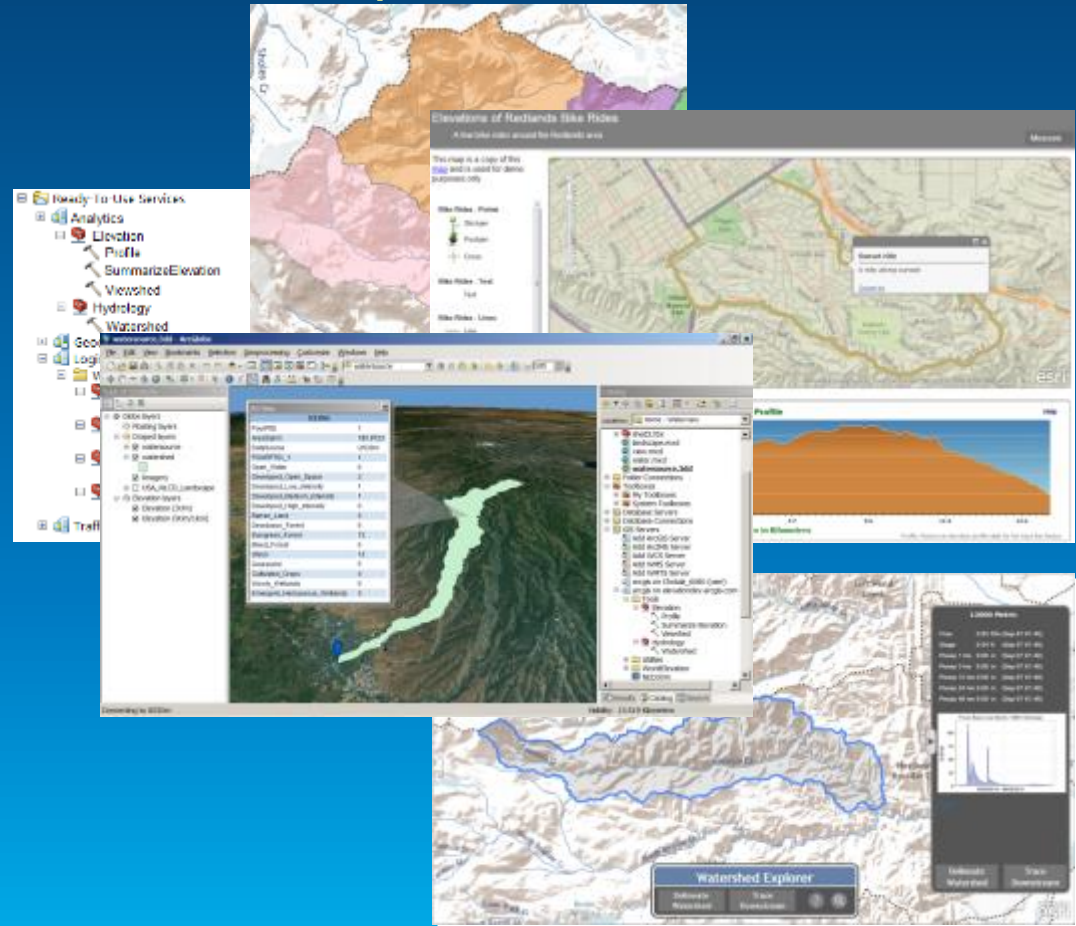
# Landscape Analysis Layers

Ready-to-use for visualization and analysis of earth's landscape

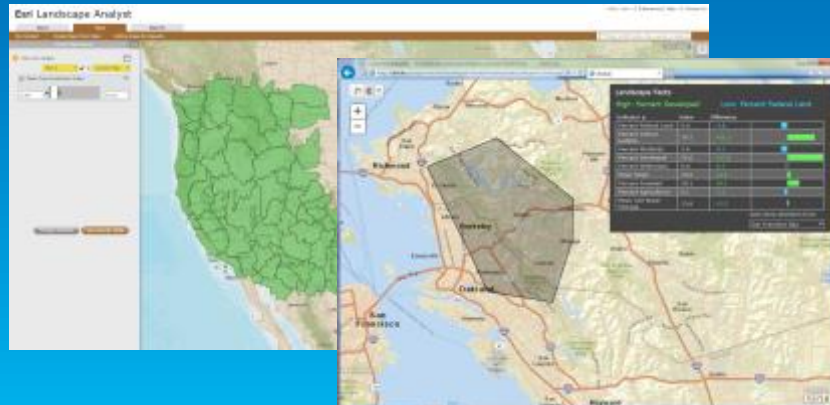
## Online Analytics



## Online GP Tools Desktop and Online



## Location Analytics Landscape Infographics and Data Enrichment

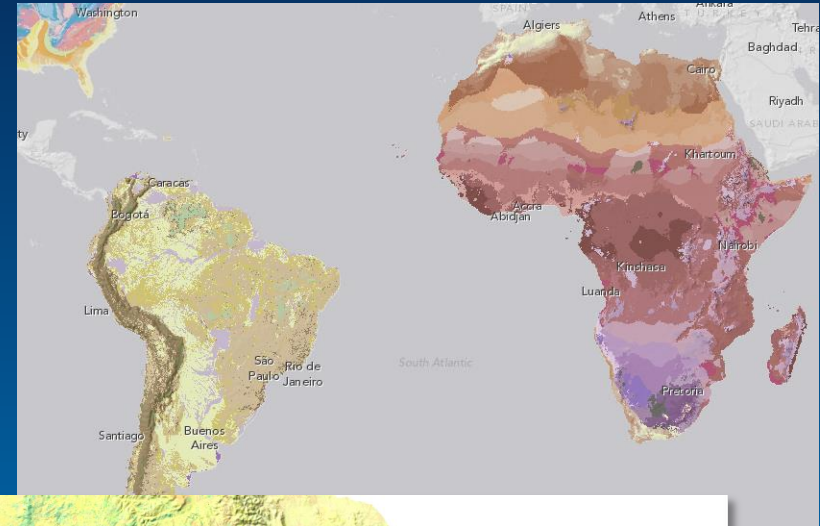




# Landscape Analysis Layers: What's New

Ready-to-use content for visualization and analysis of earth's landscape

- **End of Beta Period for USA Landscape Layers**
  - Will update layers as appropriate (e.g. Soils)
  - Recent updates for NLCD, GAP Ranges, Soils SSURGO
- **Recently Published 10+ New International Layers**
  - Content for Africa and South America to start
  - Terrestrial Ecosystems, Land Surface Forms, Ecological Facets, etc.
- **Road Ahead: Provide More Original Content**
  - Ecological Land Classification for the Globe
  - New Global Landcover derived from Landsat 8



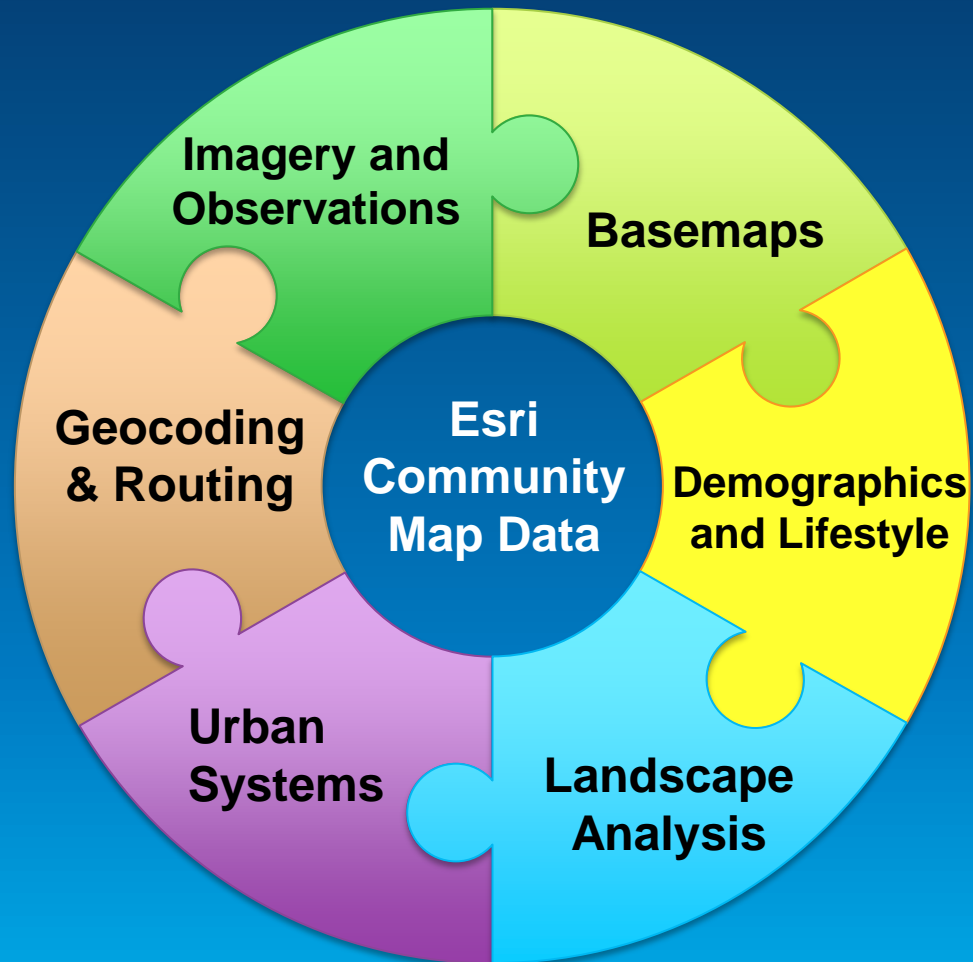
# World Elevation Layers: What's New

Ready-to-use content for visualization and analysis of earth's surface

- **End of Beta for Elevation Layers**
  - Recent updates (SRTM 4.1, EarthEnv-DEM90)
  - New Multi-Directional hillshade
  - Community contributions now being accepted
  - Public sources are updated as new DEM's come available
- **New community contributed content**
  - USA - FEMA Lidar DTM
  - International - Denmark, Finland, Norway, and Great Britain
- **Road Ahead:**
  - Expanded high-resolution coverage through community contributions
  - New Analysis Layers – Curvature and Roughness
  - Elevation integration into 3D

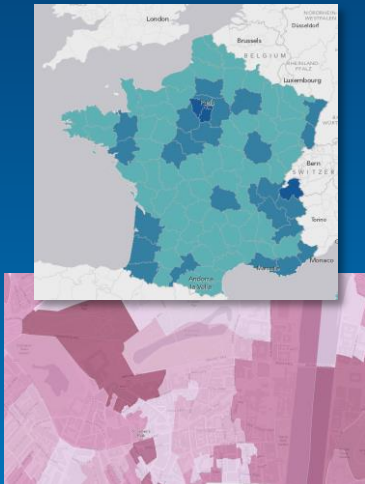


# Esri Content Portfolio for Demographics and Lifestyle





# Demographic Data Accessible in Four Ways



Maps



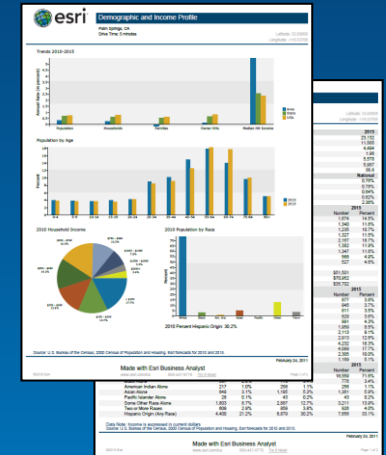
Infographics

Address	City
123 S Main St	Fairfax



Median Age	Tapestry Segment	Median Income
32.4	Laptops & Lattes	\$77,018

Geographic Data Enrichment

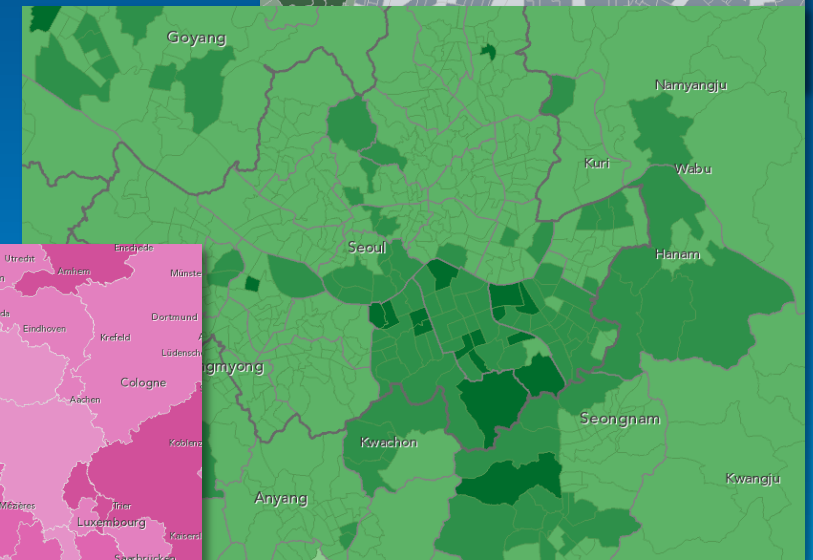
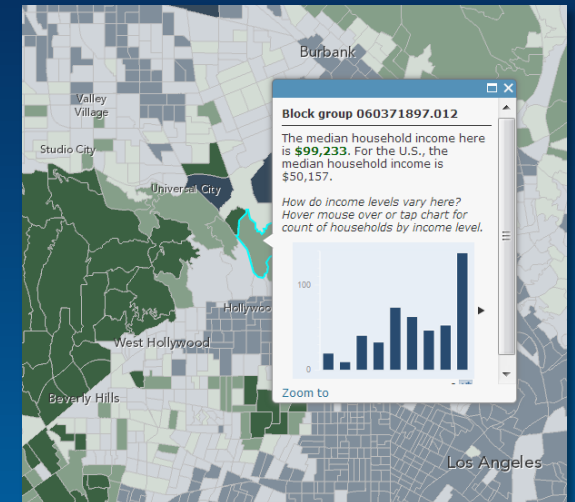


Reports

# Demographic Maps

## Collection of Ready-to-use Maps and Layers

- Data for Multiple Themes
  - Demographics, Lifestyle, Spending, Business
- Include Popups
- Configurable: customize symbols or popups
- Access via “Demographics and Lifestyle” Group



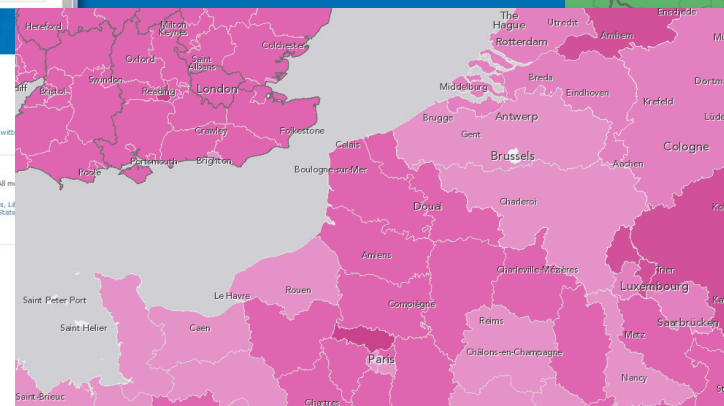
Demographics and Lifestyle

EDIT INVITE USERS MEMBERSHIP REQUESTS CHANGE OWNER DELETE GROUP SHARE

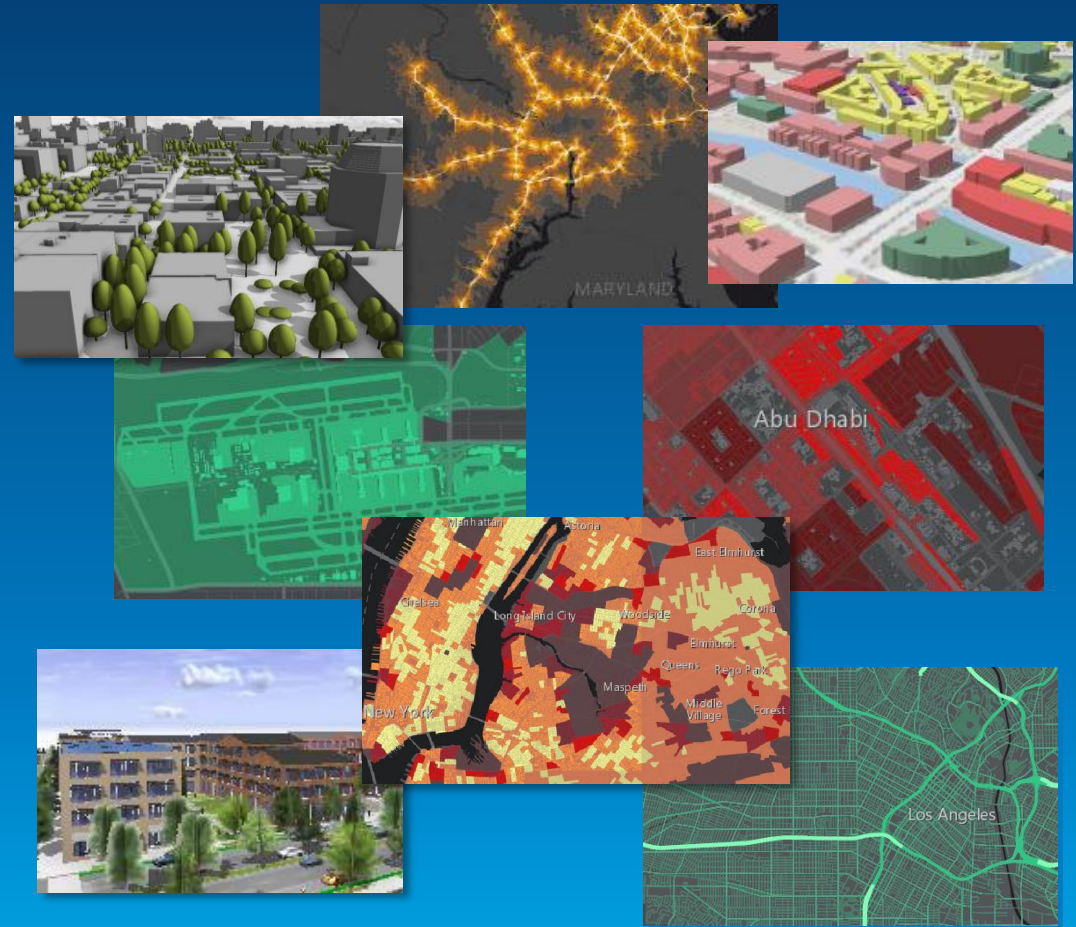
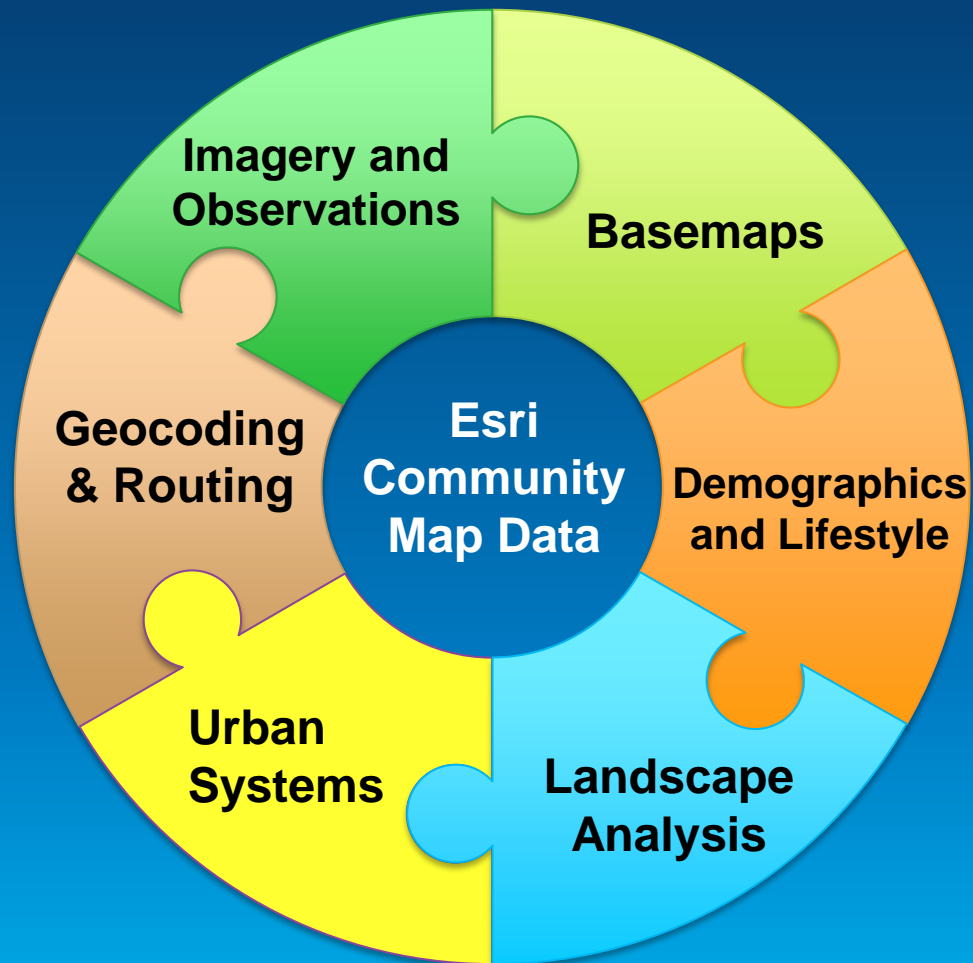
This group contains a set of demographic and lifestyle maps published by Esri. This includes maps for the U.S. and many other countries around the world, using latest demographic data from Esri and other sources.

Group Content

Title	Owner	Rating	Views	Date
Alcoholic Beverages Spending in the United States	Esri	3 stars	9,450 views	June 23, 2014
Average Age of Population in South Korea	Esri	0 ratings, 0 comments	15 views	June 24, 2014
Average Detached Housing Value in South Korea	Esri	0 ratings, 0 comments	14 views	June 24, 2014
Average Household Income in South Korea	Esri	0 ratings, 0 comments	14 views	June 23, 2014



# Esri Content Portfolio for Urban Systems

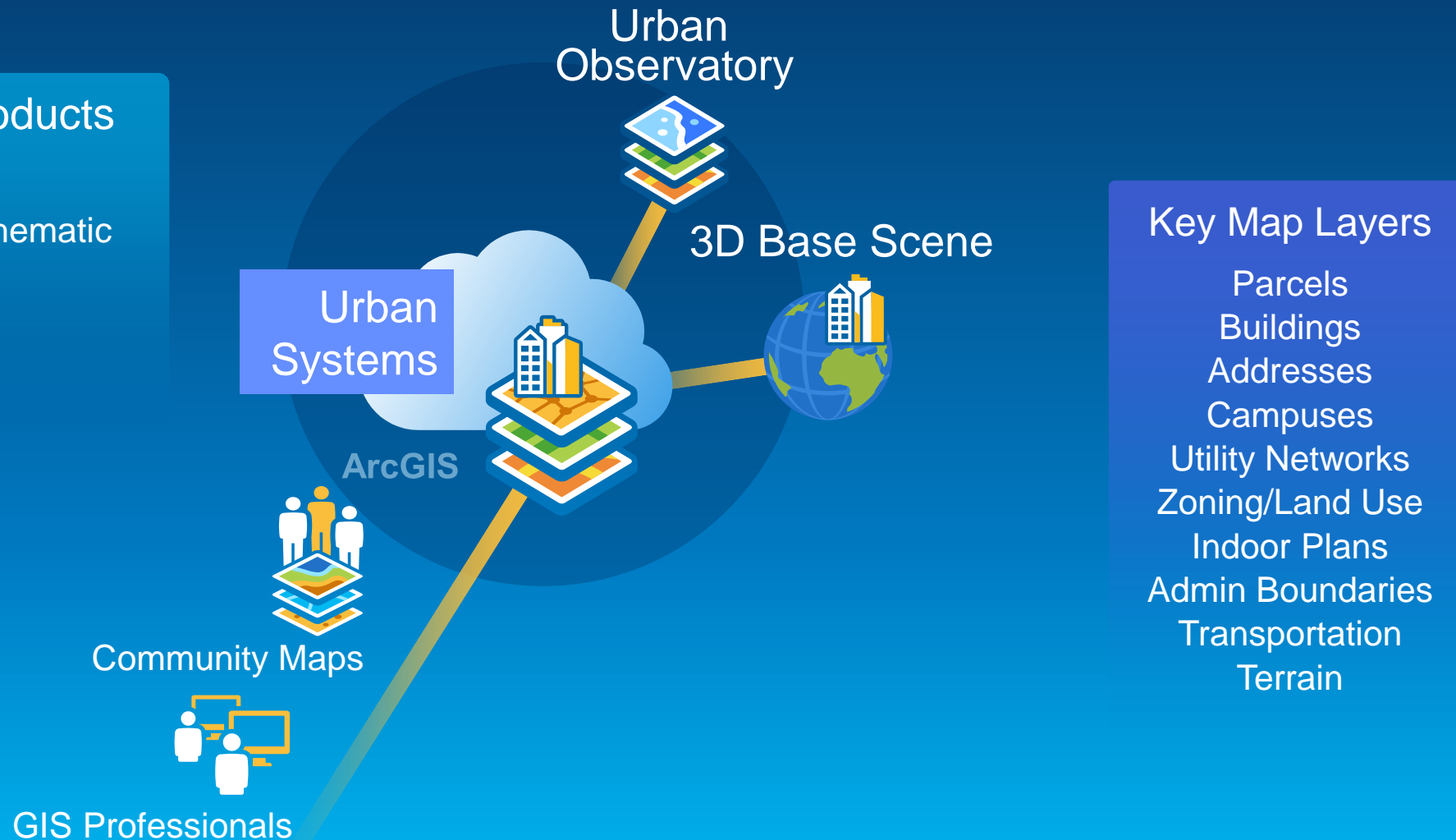


# Urban Systems

Provides the critical information needed to understand our cities and their systems

## Information Products

- 3D Base Scene
- Operational + Thematic Maps Layers



## Key Map Layers

- Parcels
- Buildings
- Addresses
- Campuses
- Utility Networks
- Zoning/Land Use
- Indoor Plans
- Admin Boundaries
- Transportation
- Terrain



# 3D Base Scene

Supporting your work in 3D



3D  
Base Scene



Multi Scale:

- Global
- Regional
- Local
- Campus

Visualize  
New Development



Understand  
Zoning  
Regulations



Manage  
Campuses



Manage  
Public Safety



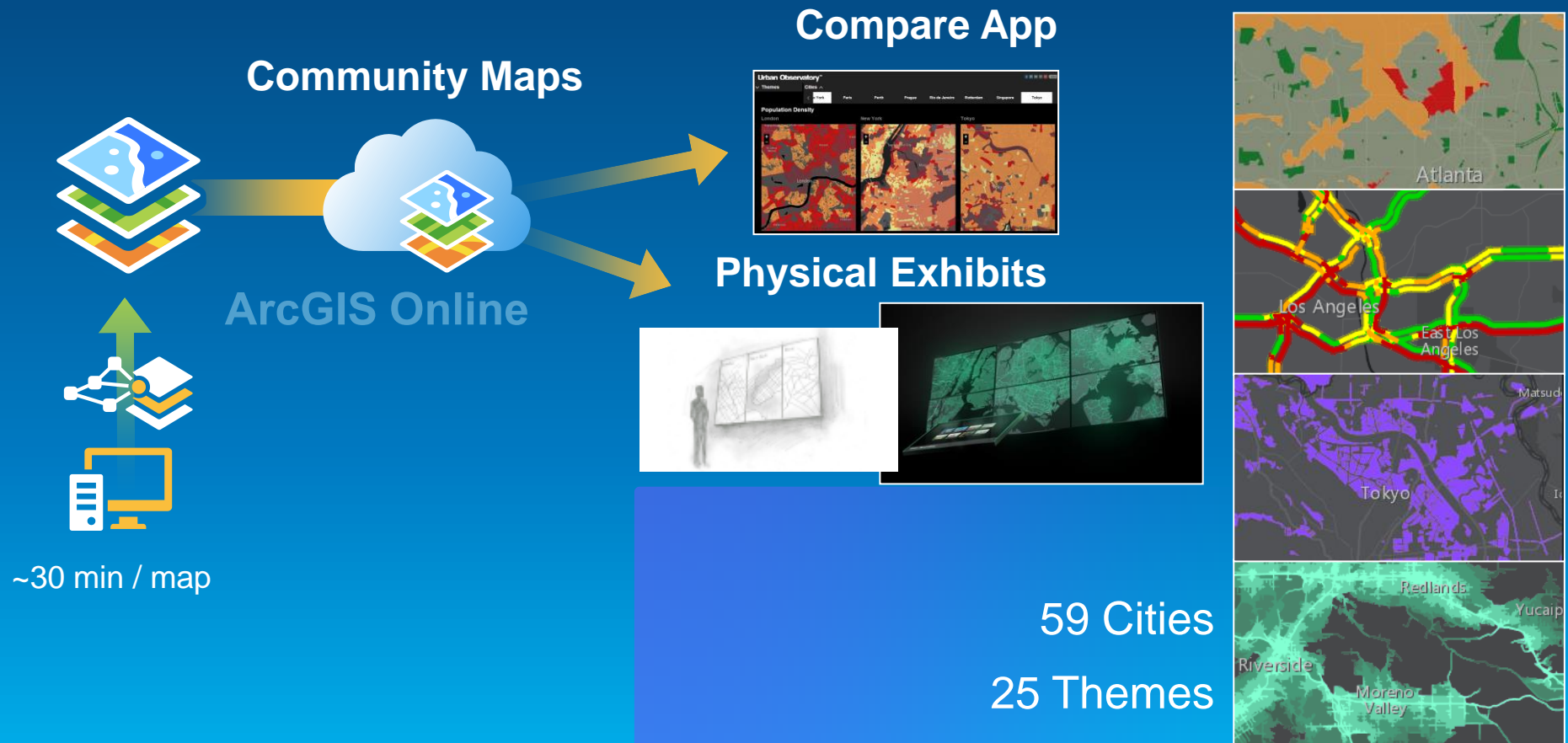
Conduct  
3D Analysis



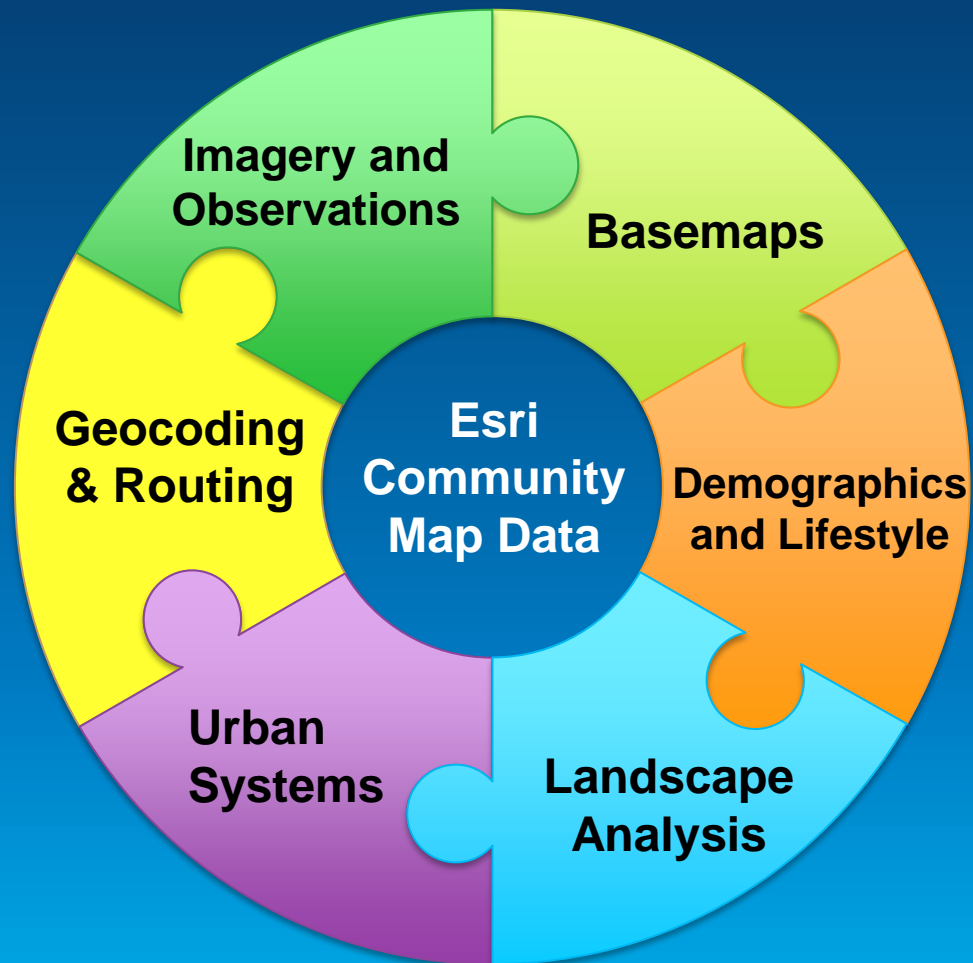
# Urban Observatory

A live museum with a data pulse

- Allows visualization and comparison of specific urban themes across multiple cities around the world



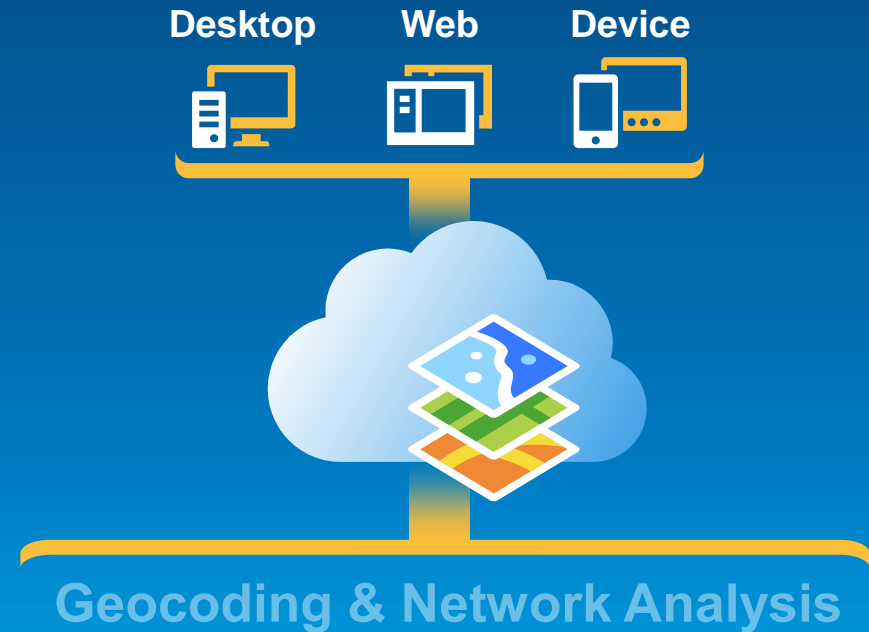
# Esri Content Portfolio for Geocoding & Routing



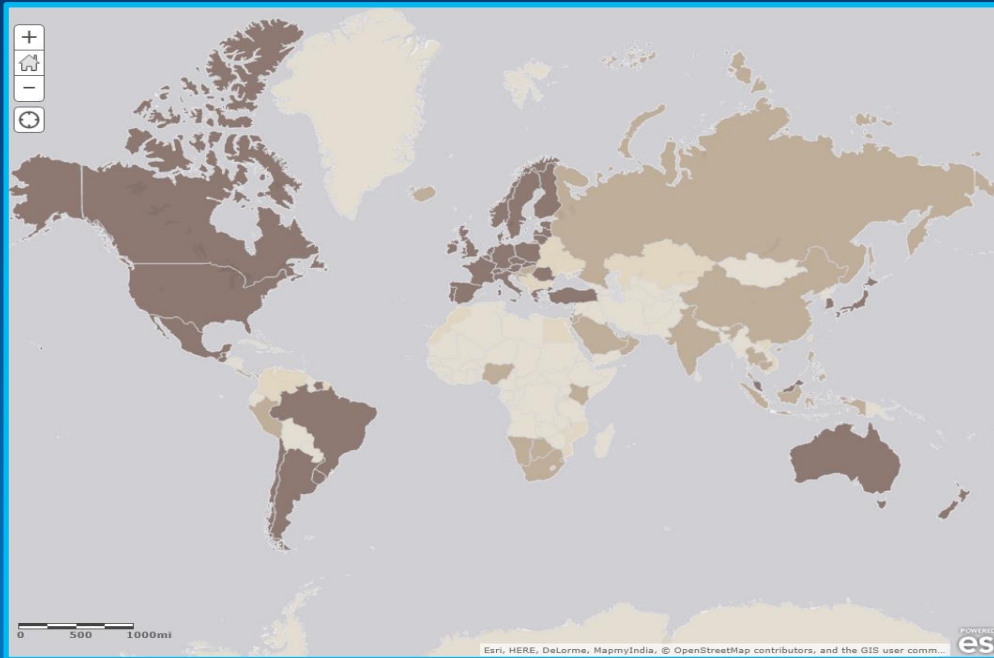
# Geocoding and Network Analysis

Essential analytical services that are available in the ArcGIS Platform

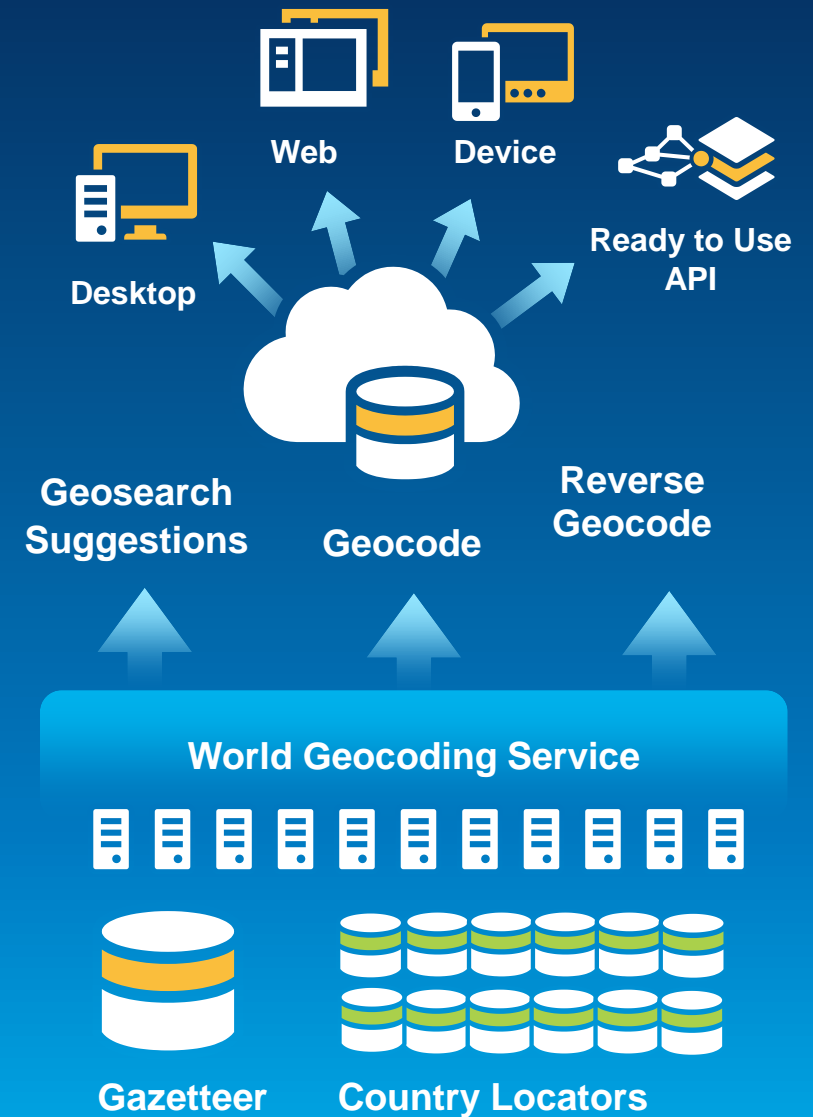
- **Integral Part of the ArcGIS Platform**
- **Built-in to ArcGIS Applications**
- **Available for use in APIs and SDKs**



# World Geocoding Service



- Built with best available global content
  - Includes 106 Countries with addresses
  - Includes World Places and Points of Interest
- Supports inputs in Multiple Languages



# Global Coverage – Network Analysis Services

## Coverage Map



19 Direction Languages

Transportation Network

101 - Detailed

44 - Intermediate

Traffic

35 - Live

42 - Historic

## Country List

Serial #	Country Name	ISO Code	Speed Data Source	Traffic Incidents	Logistics Attributes	Region
	Albania	ALB	Posted Speed Limits	No	No	Europe
	Andorra	AND	Historical Averages	No	Yes	Europe
	Angola	AGO	Limited Coverage	No	No	Middle East and Africa
	Argentina	ARG	Historical Averages	No	No	South America
	Aruba	ABW	Limited Coverage	No	No	South America
	Australia	AUS	Live Speeds	No	No	Oceania
	Austria	AUT	Live Speeds	Yes	Yes	Europe
	Bahrain	BHR	Historical Averages	No	No	Middle East and Africa
	Bangladesh	BGD	Limited Coverage	No	No	South East Asia
	Barbados	BRB	Limited Coverage	No	No	South America

critical

severity	critical
incidenttype	CONSTRUCTION
start_localtime	5/8/2013 12:15:00 PM
end_localtime	7/1/2013 9:00:00 AM
lastupdate_localtime	5/8/2013 12:17:23 PM
start_utctime	5/8/2013 7:15:00 PM
end_utctime	7/1/2013 4:00:00 PM
lastupdate_utctime	5/8/2013 7:17:23 PM
description	NB Alaskan Way S is closed and S Main St - construction



# Network Analysis Capabilities



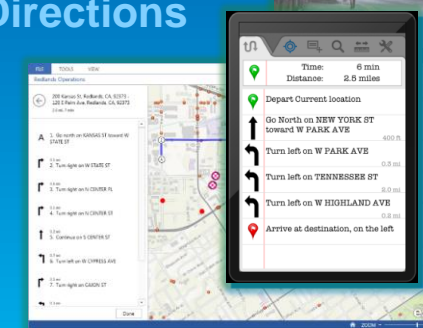
## Travel Modes



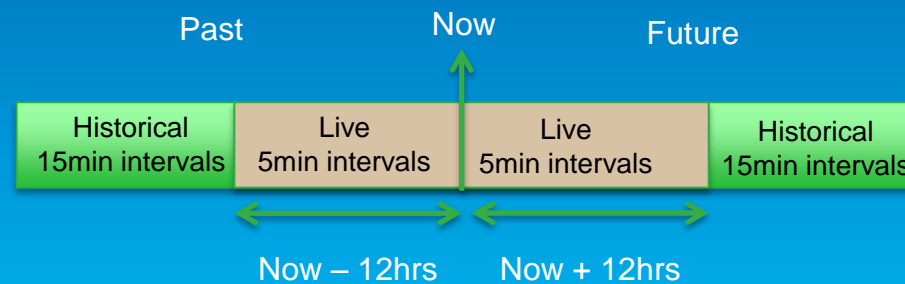
## Commercial Grade



## Directions



## Traffic Aware



# Living Atlas at the User Conference

New Ways to Experience the Living Atlas during the UC and Beyond

## 1. Physical Exhibits

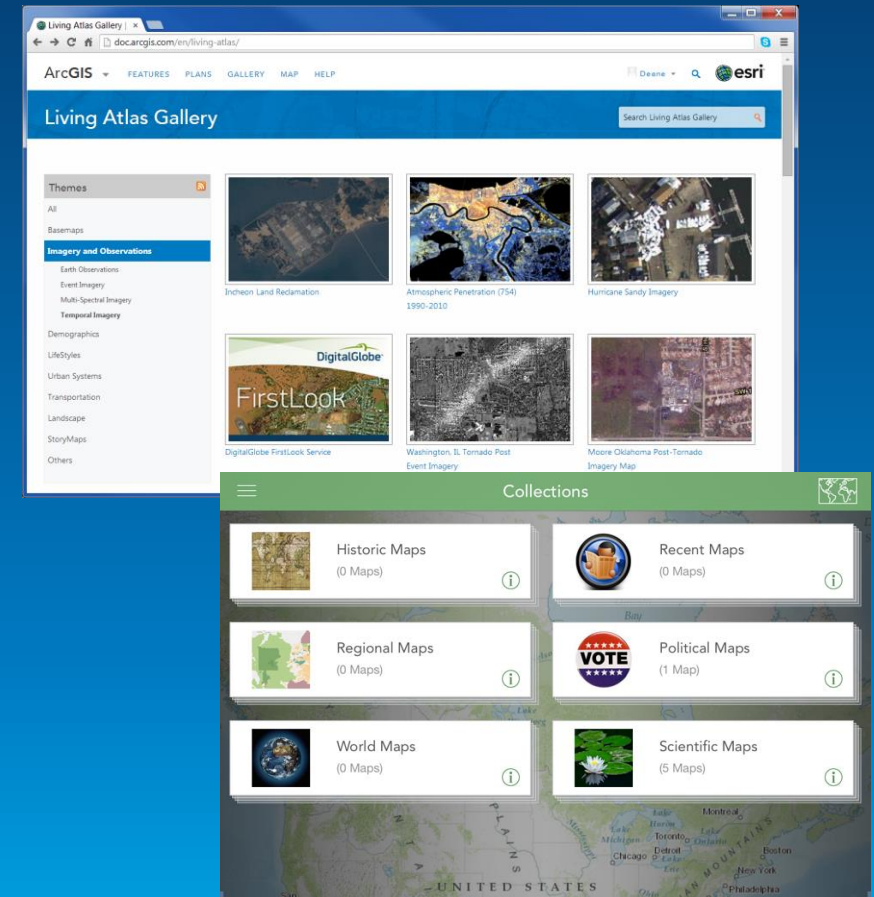
- Plenary Breaks
- Map Gallery
- Online Island in Esri Showcase

## 2. Living Atlas Web App

- Custom Web App to Browse and Preview Maps

## 3. Explorer for ArcGIS App

- “Try It” Experience Featuring Collections of Maps





# Join the ArcGIS Content Community

<http://bit.ly/ContentCommunity>

The screenshot displays the Esri GeoNet website interface. At the top, the Esri logo is on the left, and navigation links for 'Industries', 'Products', 'Support & Services', and 'About' are in the center. A search bar is on the right. Below the header, the 'GeoNet' logo and 'The Esri Community' tagline are prominent. A secondary navigation bar includes 'Home', 'Content', 'People', 'Places', and 'GeoNet Help'. The main content area features a 'Global Content' banner with a background of orange pipes. Below the banner is a navigation menu with 'Activity', 'Content', 'People', 'Reports', 'Calendar', 'Actions', 'About', 'Share', and 'Manage'. The 'Activity' section shows a post by 'esri' with the text 'What's going on?'. Below this, the 'RECENT ACTIVITY' section displays a post by 'Christophe Charpentier' titled 'Football or Soccer?' with a world map image. The right sidebar contains sections for 'FEATURED CONTENT' (listing PDFs like 'Content Track - UC 2014.pdf'), 'POPULAR CONTENT' (listing 'Football or Soccer?' and 'Community Maps Press Release'), and 'TOP PARTICIPANTS'.

**Thank you...**

- **Please fill out the session survey:**

**First Offering ID: 1112**

**Second Offering ID: 1348**

**Third Offering ID: 1996**

**Online – [www.esri.com/ucsessionsurveys](http://www.esri.com/ucsessionsurveys)**

**Paper – pick up and put in drop box**



Understanding our world.