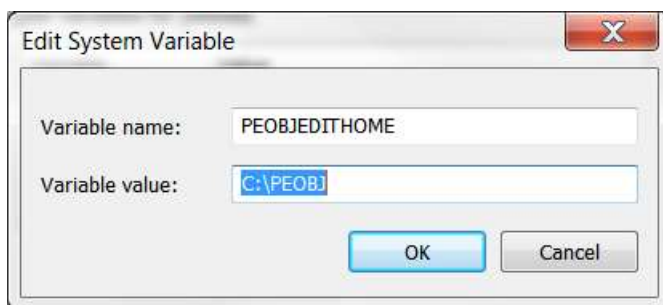
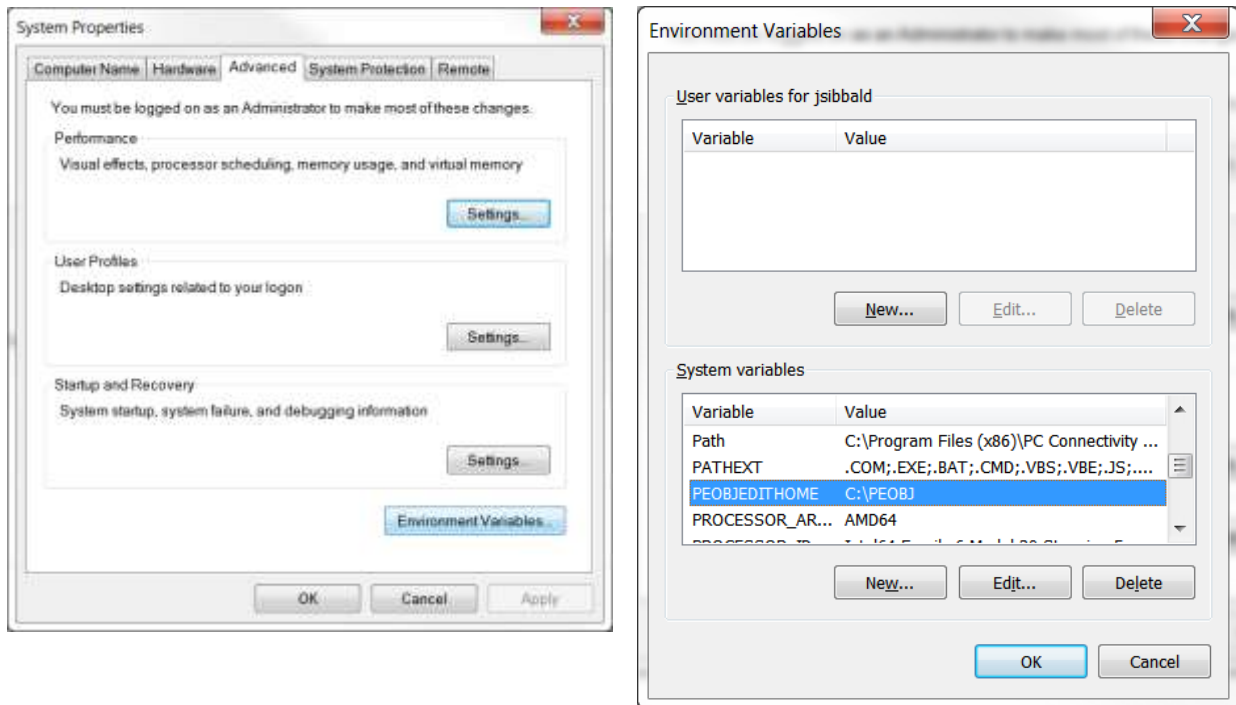


## Adding the OSTN02 NTV2 transformation to ArcGIS Explorer 1500

Add an Environment Variable of PEOBJEDITHOME to the System Variables with the value of the folder where the GEOGTRAN file will reside (e.g. C:\PEOBJ )



In this folder create a file (with no extension) called GEOGTRAN (or copy and rename the one attached to this forum)



The content of the GEOGTRAN file (each GEOGTRAN entry is a separate line) is

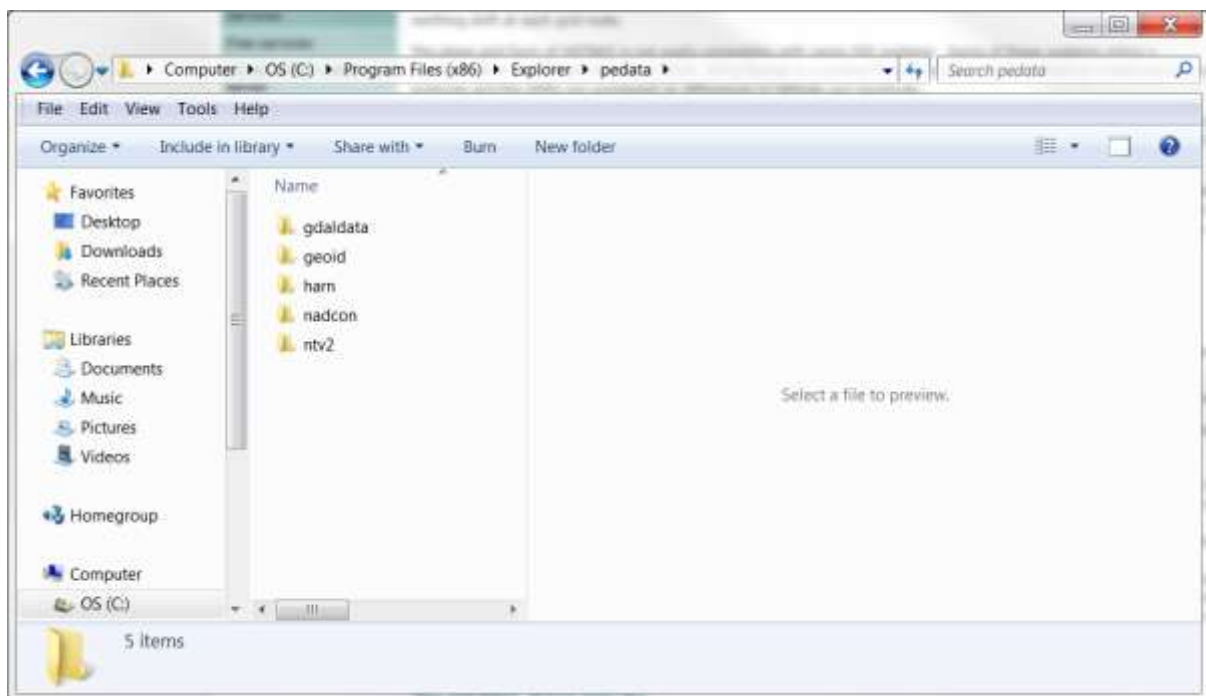
```
GEOGTRAN, 208339, "OSGB_1936_To_WGS_1984_OSTN02_NTV2",  
PE_GCS_OSGB_1936, PE_GCS_WGS_1984, PE_MTH_NTV2, PE_PAR_NAME_DATASET,  
"Dataset_greatbritain/OSTN02_NTV2"  
GEOGTRAN, 208338, "OSGB_1936_To_ETRS_1989_OSTN02_NTV2",  
PE_GCS_OSGB_1936, PE_GCS_ETRS_1989, PE_MTH_NTV2,  
PE_PAR_NAME_DATASET, "Dataset_greatbritain/OSTN02_NTV2"
```

After downloading the NTV2 file from

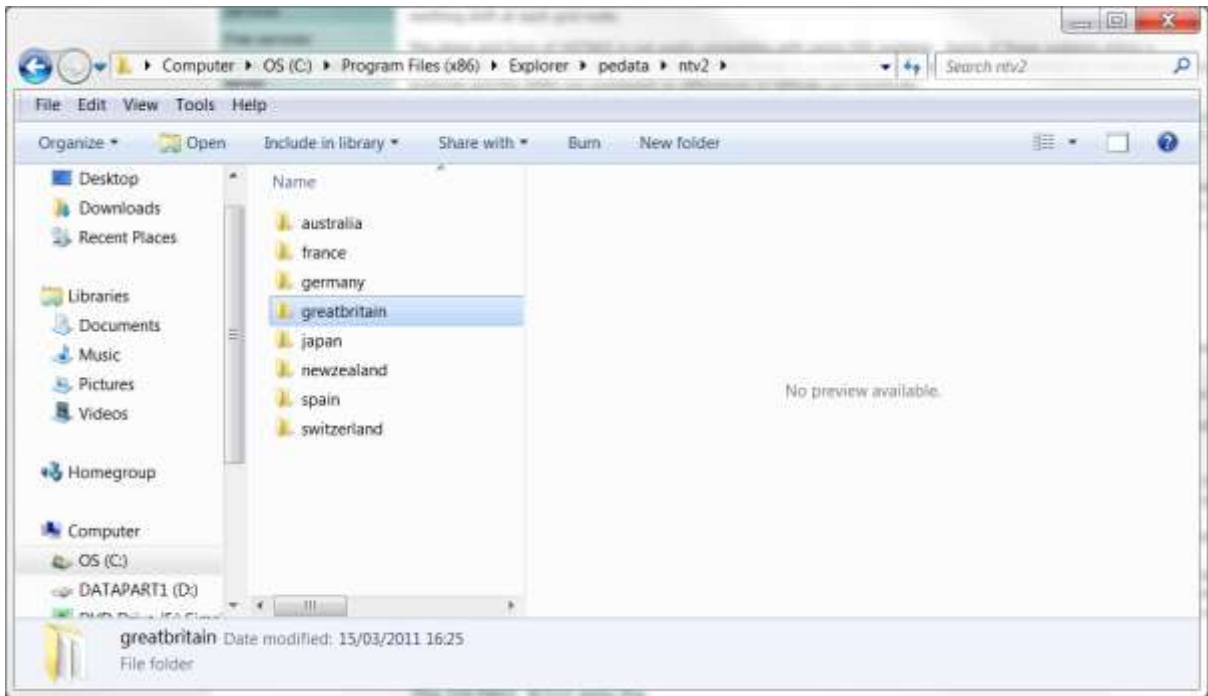
[http://www.ordnancesurvey.co.uk/oswebsite/gps/docs/OSTN02\\_NTV2\\_DataFiles.zip](http://www.ordnancesurvey.co.uk/oswebsite/gps/docs/OSTN02_NTV2_DataFiles.zip)

Unzip it and go to the pedata folder in the Explorer folder

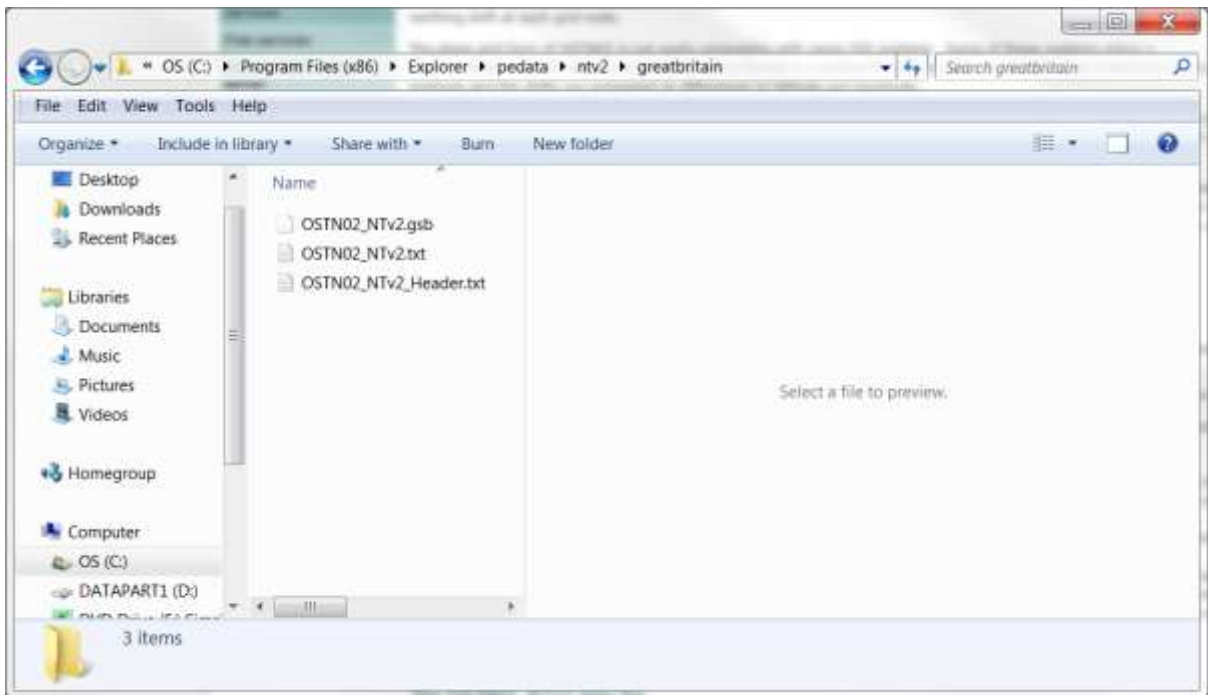
On a 64 bit machine this will be in Program Files (x86)



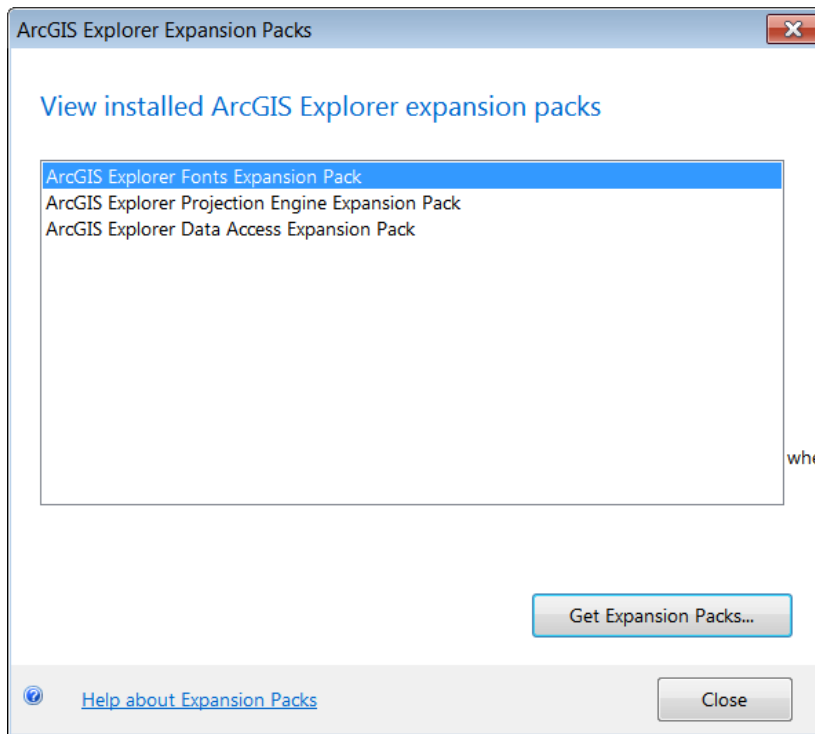
Open the ntv2 folder and create a new folder called "greatbritain" (one word, no spaces and all lowercase)



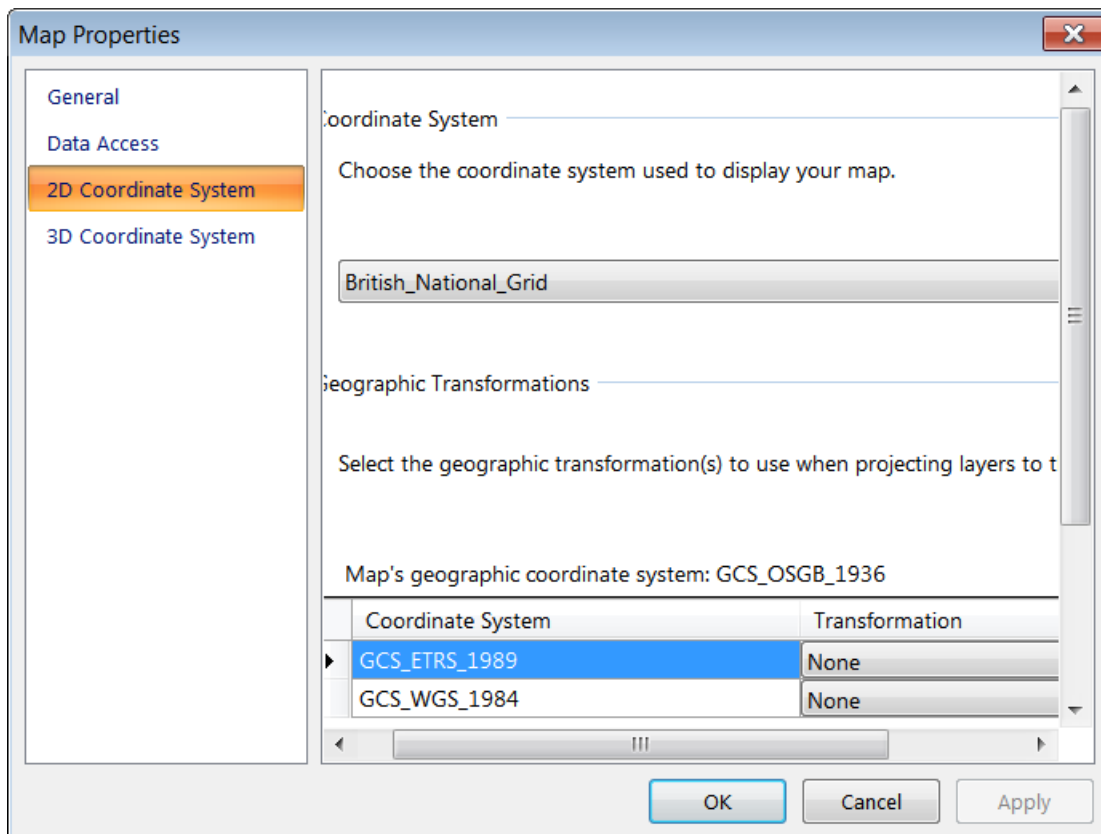
Into this folder place the unzipped OSTN02\_NTv2.gsb file which you downloaded

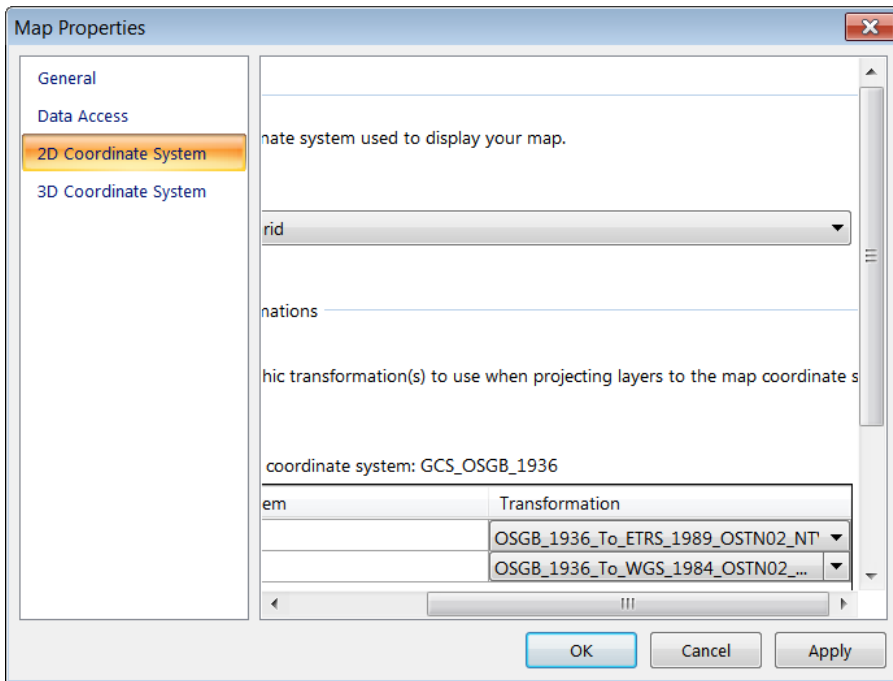
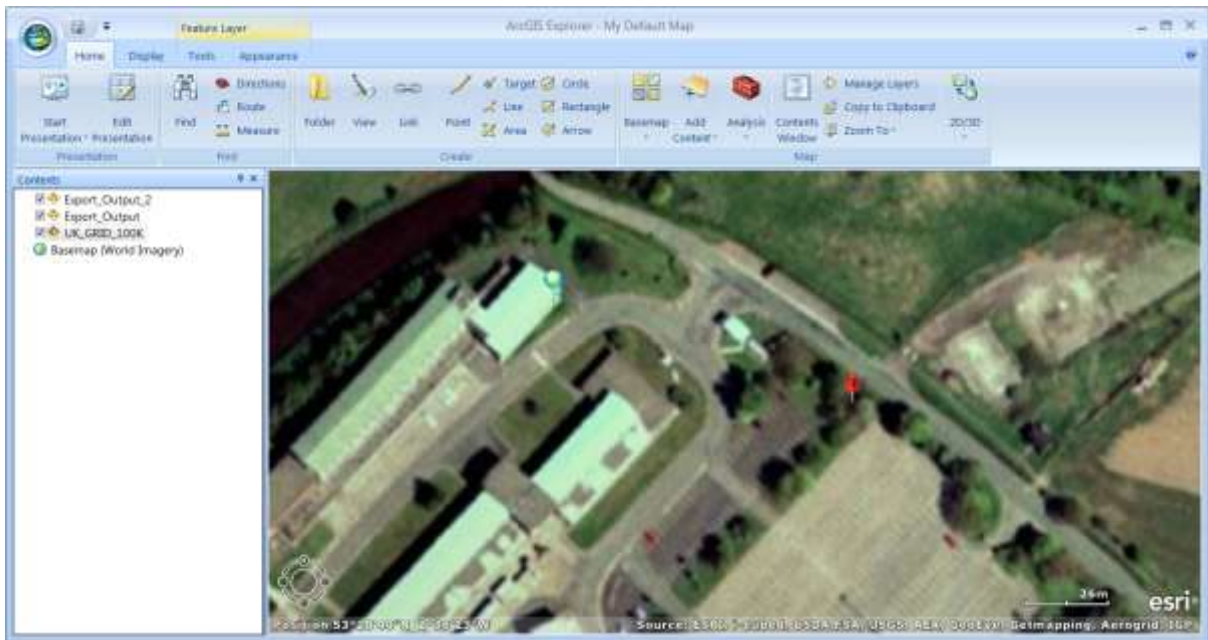


I have the ArcGIS Explorer Projection Engine Expansion Pack so I do not know if this will work without it. If not it can be downloaded.

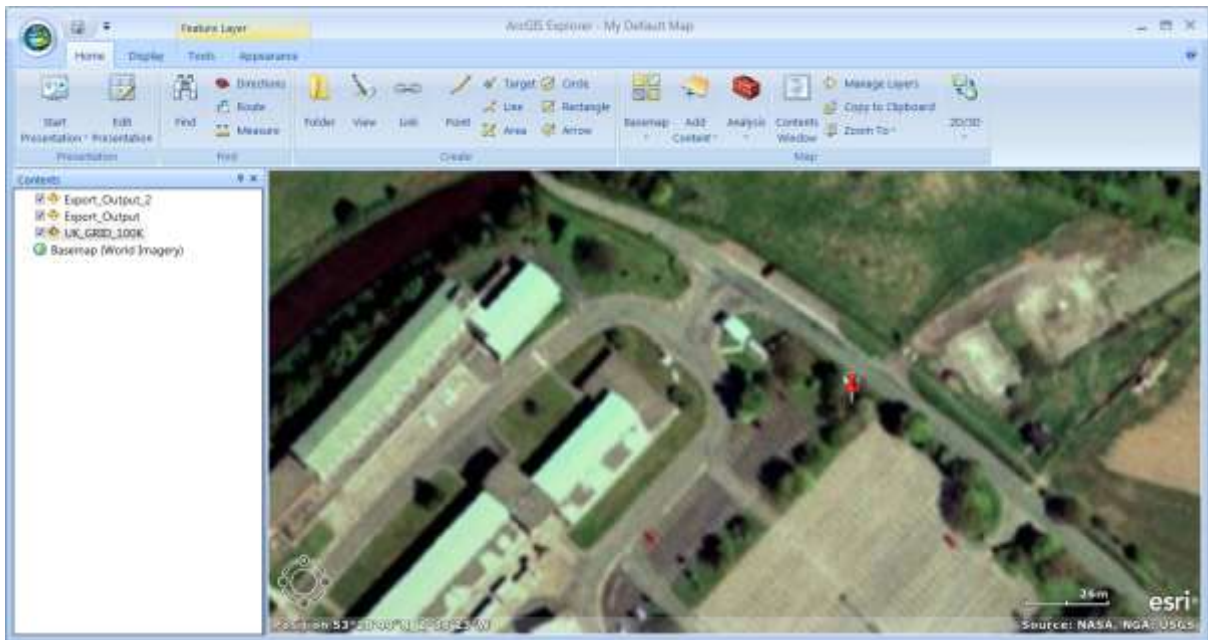


In the Map Properties I chose a 2D BNG CRS and added some ETRS\_1989 and BNG data





After applying the pins are coincident or within 0.001 of a metre.



In order to get this to work for ArcGIS Desktop, ArcReader and ArcGIS Server the greatbritain folder with the .gsb file needs to be copied into the respective pedata/ntv2 folder e.g.

